



ALVARADO METAL POLES

GENERAL NOTES

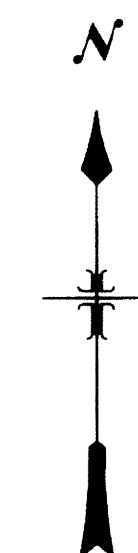
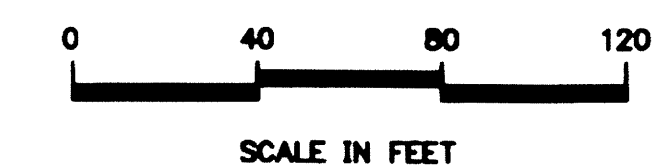
1. ALL LUMINAIRES SHALL BE REPLACED, DISCONNECTED AND REMOVED. EXISTING LUMINAIRE AND SHALL BE RETURNED TO OWNER. CONNECT NEW LUMINAIRE USING EXISTING CONDUCTORS.
2. INSTALL 5A IN-LINE FUSE AT BASE OF ALL POLES.
3. HISTORIC CONCRETE POLE SHOWN FOR CONDUIT/CONDUCTOR CONTINUITY PURPOSE ONLY
4. CONTRACTOR SHALL GET PRIOR APPROVAL FROM THE CHPO AND ARCHITECT BEFORE STARTING GENERAL WORK FOR THE PROJECT.
5. REPLACEMENT HARDWARE SHOULD MATCH EXISTING IN SIZE, SHAPE AND FINISH.
6. ALL HISTORIC LIGHT COMPONENTS TO BE RE-INSTALLED SHOULD GO BACK TO THEIR ORIGINAL LOCATIONS.
7. SALVAGE ANY REPLACED POLE SHAFTS.
8. ANY STEEL REPLACEMENT POLE SHALL BE FIELD VERIFIED FOR EXACT MATCH OF ALL DIMENSIONS MATCH EXISTING POLES.
9. CHPO SHALL APPROVE OF ALL MATERIALS AND REPLACEMENT PARTS PRIOR TO CONSTRUCTION.
10. CONTRACTOR SHALL PROVIDE TO CHPO A GENERAL CHRONOLOGY OF WORK FOR APPROVAL PRIOR TO CONSTRUCTION.

LIGHT POLE LEGEND

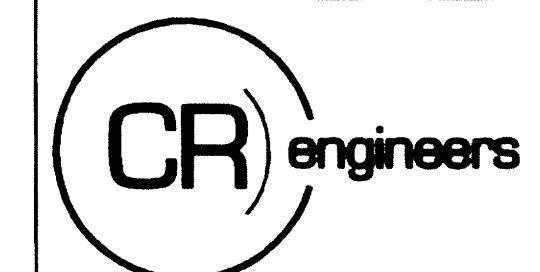
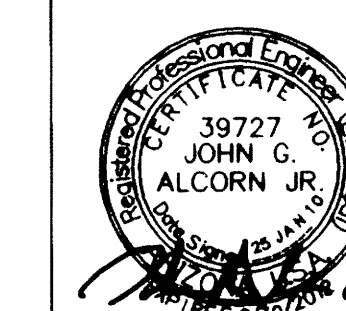
-  POLE # 0000 HISTORIC METAL POLE - THE UNION METAL MANUFACTURING CO.
-  UTILITY POWER DISTRIBUTION POLE

KEYED NOTES

- | | |
|---|---|
| <ul style="list-style-type: none"> ① REPLACE EXISTING LUMINAIRE ② FINISH - REMOVE RUST USING CHEMICAL RUST REMOVER PRIME AND PAINT PER SPECIFICATIONS ③ STEEL SURFACE DING/DENTS - FILL WITH BODY FILLER ④ FINISH - REMOVE RUST USING CHEMICAL RUST REMOVER PRIME AND PAINT PER SPECIFICATIONS ⑤ HARDWARE - REPLACE BOLT/LATCH AT ALUMINUM ACCESS PANEL ⑥ CAST IRON PART - PROVIDE REPLACEMENT EGG & DART RING ⑦ STEEL SHAFT - REPAIR SHAFT, SEAL BASE OF SHAFT ⑧ STEEL SHAFT - UNBEND AND SEAL BASE OF SHAFT | <ul style="list-style-type: none"> ⑨ STEEL SHAFT - REPAIR SHAFT OR REPLACE, IF AVAILABLE ⑩ REPLACEMENT - INSTALL STEEL REPLICA POLE (UNION METAL) ⑪ SALVAGE - ANY REUSABLE HISTORIC COMPONENTS ⑫ CAST IRON PART - REPLACE MISSING PART WITH REPLICA OR SALVAGED PART ⑬ STEEL SHAFT - REPAIR LARGE DENT ⑭ ANCHOR BOLTS - REMOVE SURFACE CORROSION, COAT WITH ANTI CORROSION SEALER ⑮ STEEL SHAFT - REPAIR DENT AND GAP IN SEAM, SEAL BASE OF SHAFT, CRIMP BACK TO ORIGINAL CONDITION ⑯ CAST IRON PARTS - REPLACE WITH FILLER ⑰ STEEL SHAFT - REPLACE ⑱ THE CITY ARCHAEOLOGY OFFICE SHALL BE CONTACTED PRIOR TO ANY UNDERGROUND WORK IN THIS AREA |
|---|---|



PROJECT NUMBER ST85160003 FA



16719 E. Palisades Blvd., Suite 202
Fountain Hills, AZ 85268
Phone: (480) 816-5541
Fax: (480) 816-5540

HISTORIC ALVARADO DISTRICT
ENLARGED SITE PLAN
FOR STEEL POLES

ES2.0

REVISION 10/22/10.

JOB NO. 070302

DATE 1/10
DESIGNED KEL

DRAWN KEL
CHECKED JGA

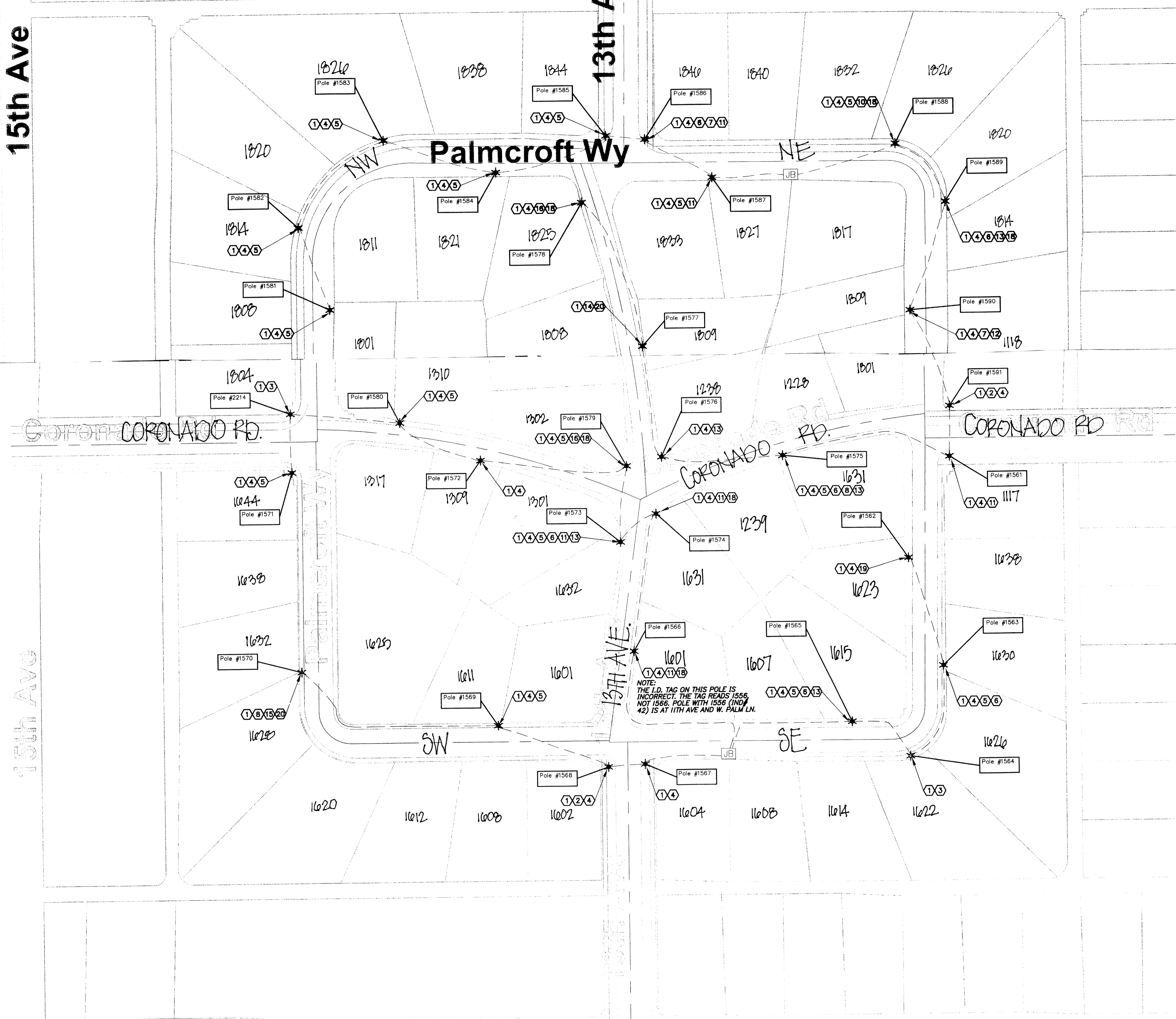
Palm Ln

CONCRETE POLES



15th Ave

13th Ave



MATCH LINE
SEE SHEET E3.4
FOR CONTINUATION

GENERAL NOTES

1. ALL LUMINAIRES SHALL BE REPLACED, DISCONNECTED AND REMOVED EXISTING LUMINAIRE AND SHALL BE RETURNED TO OWNER. CONNECT NEW LUMINAIRE USING EXISTING CONDUCTORS.
2. INSTALL SA IN-LINE FUSE AT BASE OF ALL POLES.
3. N/A
4. CONTRACTOR SHALL GET PRIOR APPROVAL FROM THE CHPO AND ARCHITECT BEFORE STARTING GENERAL WORK FOR THE PROJECT.
5. REPLACEMENT HARDWARE SHOULD MATCH EXISTING IN SIZE, SHAPE AND FINISH.
6. ALL CONCRETE PATCHES SHOULD BE TESTED TO MATCH EXISTING POLE PATTERNS AND TEXTURES.
7. ALL HISTORIC LIGHT COMPONENTS TO BE RE-INSTALLED SHOULD GO BACK TO THEIR ORIGINAL LOCATIONS.
8. N/A
9. N/A
10. CHPO SHALL APPROVE OF ALL MATERIALS AND REPLACEMENT PARTS PRIOR TO CONSTRUCTION.

11. CONTRACTOR SHALL PROVIDE TO CHPO A GENERAL CHRONOLOGY OF WORK FOR APPROVAL PRIOR TO CONSTRUCTION.
12. CONTRACTOR SHALL REMOVE EXISTING WIRE CLIP USED FOR HOLIDAY DECORATIONS PRIOR TO ANY WORK PERFORMED ON LIGHTS AND POLES. CONTRACTOR SHALL RE-INSTALL WIRE CLIP WHEN WORK ON LIGHT AND POLE IS COMPLETED.

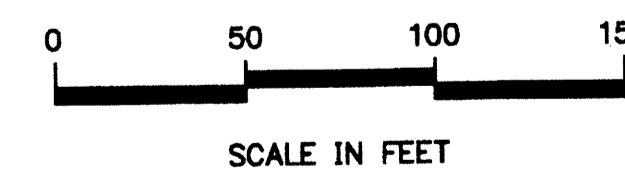
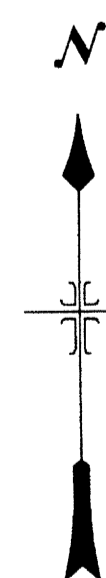
KEYED NOTES

- 1) REPLACE EXISTING LUMINAIRE.
- 2) ACCESS BLOCK - REPLACE WITH REPLICA
- 3) POLE IS INCOMPATIBLE TYPE FOR THE AREA. INSTALL PRECAST CONCRETE REPLICA REPLACEMENT POLE.
- 4) FINISH - CLEAN SURFACE AND APPLY SEALER PER SPECIFICATIONS
- 5) CRACKS - PATCH CRACKS PER SPECIFICATIONS
- 6) HARDWARE - REPLACE BOLTS AT ACCESS BLOCK
- 7) ACCESS BLOCK - REPAIR, PATCH CRACKS/REPLACE MISSING MATERIAL PER SPECIFICATIONS
- 8) INTERCEPT EXISTING CONDUIT/CONDUCTORS. INSTALL SWEEPS INTO NEW JUNCTION BOX, RE-CONNECT CONDUCTORS.
- 9) INSTALL NEW CONDUCTORS FROM NEW JUNCTION BOX TO LUMINAIRE. CONDUCTORS SHALL MATCH EXISTING CONDUCTORS IN SIZE.
- 10) BASE - RESET POLE PLUMB
- 11) CHIP(S) - PATCH SURFACE DAMAGE, REPLACE MISSING MATERIAL PER SPECIFICATIONS
- 12) BASE - REMOVE SOIL/ADJUST GRADE ADJACENT TO POLE SO THAT SOIL LEVEL IS AT/OR BELOW BOTTOM OF POLE
- 13) HARDWARE - REPLACE BOLTS AT ACCESS BLOCK, REPLACE MISSING INTERIOR HARDWARE WITH NEW DESIGN
- 14) BASE - REMOVE/RESET POLE ON NEW CONCRETE BASE. SEE DETAIL 608 ON SHEET E4.0.
- 15) BASE - NEW CONCRETE BASE. SEE DETAIL 608 ON SHEET E4.0.
- 16) ACCESS BLOCK - REPLACE WITH REPLICA, REPLACE ALL ACCESS BLOCK HARDWARE
- 17) CRACKS - REMOVE EXISTING PATCHES, RE-PATCH USING MATERIAL THAT MATCHES POLE PER SPECIFICATIONS
- 18) CRACKS, SEVERE - REMOVE LOOSE MATERIAL, REMOVE RUST FROM ANY EXPOSED STEEL, PATCH PER SPECIFICATIONS

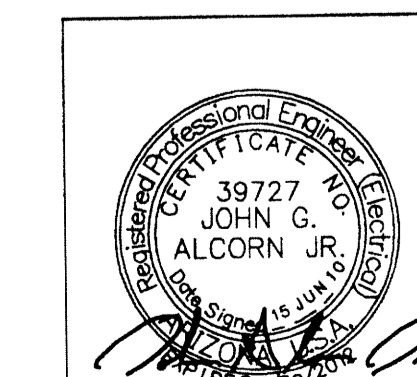
- 19) THE CITY OF PHOENIX HISTORIC ARCHAEOLOGY OFFICE SHALL BE CONTACTED PRIOR TO ANY UNDERGROUND WORK IN THIS AREA.
- 20) INSTALL PRECAST CONCRETE REPLICA MARBELITE REPLACEMENT POLE
- 21) POLE IS HISTORIC PRECAST TYPE THAT IS BEYOND REPAIR. REPLACE WITH PRECAST CONCRETE REPLICA REPLACEMENT POLE.
- 22) FINISH - CLEAN SURFACE, REMOVE SPRAY PAINT GRAFFITI, APPLY SEALER.

LIGHT POLE LEGEND

- POLE # 0000 HISTORIC METAL POLE - THE UNION METAL MANUFACTURING CO.
- POLE # 0000 HISTORIC PRECAST CONCRETE POLE - MARBELITE
- POLE # 0000 HISTORIC PRECAST CONCRETE POLE - MANUFACTURER UNKNOWN
- POLE # 0000 NON-HISTORIC PRECAST CONCRETE POLE - AMERON INTERNATIONAL
- POLE # 0000 REPLICA PRECAST CONCRETE POLE - TO MATCH MARBELITE POLE



PROJECT NUMBER ST85150005



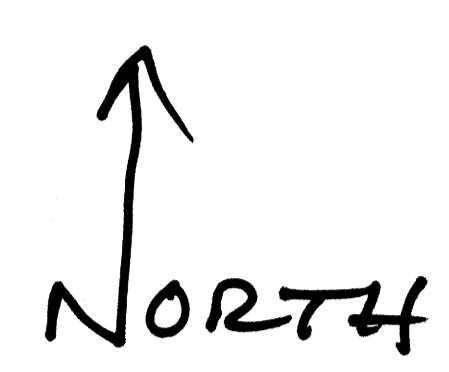
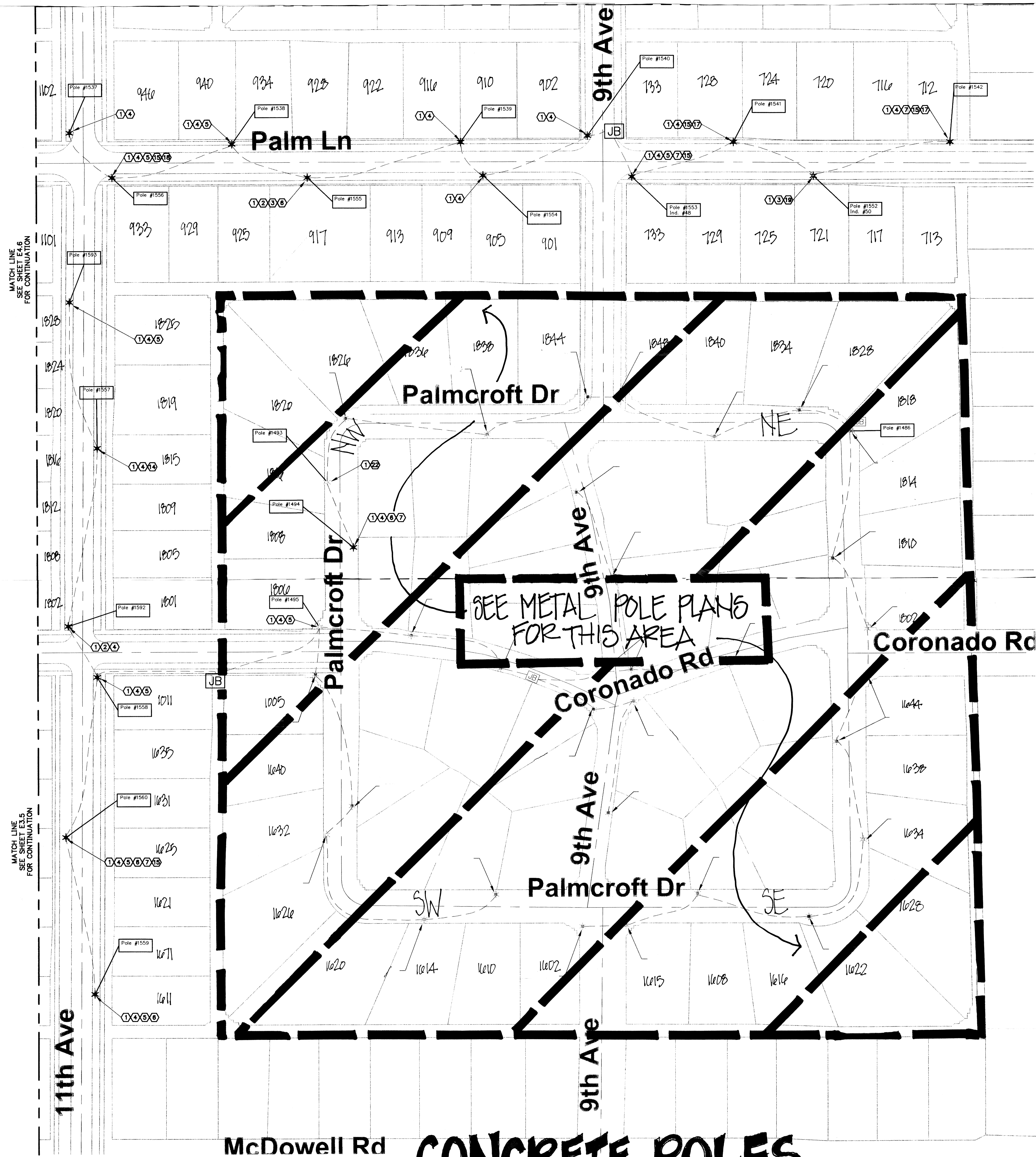
16719 E. Palisades Blvd., Suite 202
Fountain Hills, AZ 85268
Phone: (480) 816-5541
Fax: (480) 816-5540

HISTORIC ENCANTO DISTRICT
ENLARGED SITE PLAN
FOR CONCRETE POLES

E3.5

JOB NO. 020302

DATE 6/10
DESIGNED KEL
DRAWN KEL
CHECKED JGA



CONCRETE POLES

GENERAL NOTES

- ALL LUMINAIRES SHALL BE REPLACED, DISCONNECTED AND REMOVED EXISTING LUMINAIRE AND SHALL BE RETURNED TO OWNER. CONNECT NEW LUMINAIRE USING EXISTING CONDUCTORS.
- INSTALL SA IN-LINE FUSE AT BASE OF ALL POLES.
- HISTORIC CONCRETE POLE SHOWN FOR CONDUIT/CONDUCTOR CONTINUITY PURPOSE ONLY. N/A
- CONTRACTOR SHALL GET PRIOR APPROVAL FROM THE CHPO AND ARCHITECT BEFORE STARTING GENERAL WORK FOR THE PROJECT.
- REPLACEMENT HARDWARE SHOULD MATCH EXISTING IN SIZE, SHAPE AND FINISH.
- ALL CONCRETE PATCHES SHOULD BE TESTED TO MATCH EXISTING POLE PATTERNS AND TEXTURES.
- ALL HISTORIC LIGHT COMPONENTS TO BE RE-INSTALLED SHOULD GO BACK TO THEIR ORIGINAL LOCATIONS.
- SALVAGE ANY REPLACED POLE SHAPTS. N/A
- ANY STEEL REPLACEMENT POLE SHALL BE FIELD VERIFIED FOR EXACT MATCH OF ALL DIMENSIONS MATCH EXISTING POLES. N/A
- CHPO SHALL APPROVE OF ALL MATERIALS AND REPLACEMENT PARTS PRIOR TO CONSTRUCTION.

- CONTRACTOR SHALL PROVIDE TO CHPO A GENERAL CHRONOLOGY OF WORK FOR APPROVAL PRIOR TO CONSTRUCTION.
- CONTRACTOR SHALL REMOVE EXISTING WIRE CLIP USED FOR HOLIDAY DECORATIONS PRIOR TO ANY WORK PERFORMED ON LIGHTS AND POLES. CONTRACTOR SHALL RE-INSTALL WIRE CLIP WHEN WORK ON LIGHT AND POLE IS COMPLETED.

KEYED NOTES

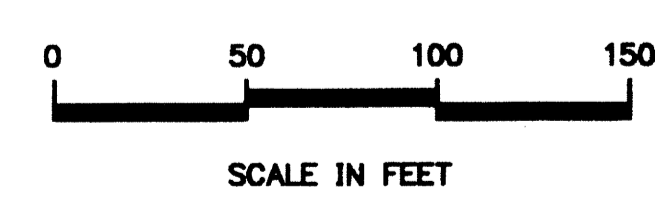
- REPLACE EXISTING LUMINAIRE.
- ACCESS BLOCK - REPLACE WITH REPLICA
- POLE IS INCOMPATIBLE TYPE FOR THE AREA. INSTALL PRECAST CONCRETE REPLICA REPLACEMENT POLE.
- FINISH - CLEAN SURFACE AND APPLY SEALER PER SPECIFICATIONS
- CRACKS - PATCH CRACKS PER SPECIFICATIONS
- HARDWARE - REPLACE BOLTS AT ACCESS BLOCK
- ACCESS BLOCK - REPAIR, PATCH CRACKS/REPLACE MISSING MATERIAL PER SPECIFICATIONS
- INTERCEPT EXISTING CONDUIT/CONDUCTORS. INSTALL SWEEPS INTO NEW JUNCTION BOX, RE-CONNECT CONDUCTORS.
- INSTALL NEW CONDUCTORS FROM NEW JUNCTION BOX TO LUMINAIRE. CONDUCTORS SHALL MATCH EXISTING CONDUCTORS IN SIZE.
- BASE - RESET POLE PLUMB

- CHIP(S) - PATCH SURFACE DAMAGE. REPLACE MISSING MATERIAL PER SPECIFICATIONS
- BASE - REMOVE SOIL/ADJUST GRADE ADJACENT TO POLE SO THAT SOIL LEVEL IS AT/OR BELOW BOTTOM OF POLE
- HARDWARE - REPLACE BOLTS AT ACCESS BLOCK. REPLACE MISSING INTERIOR HARDWARE WITH NEW DESIGN
- BASE - REMOVE/RESET POLE ON NEW CONCRETE BASE. SEE DETAIL 608 ON SHEET E4.0.
- BASE - NEW CONCRETE BASE. SEE DETAIL 608 ON SHEET E4.0.
- ACCESS BLOCK - REPLACE WITH REPLICA. REPLACE ALL ACCESS BLOCK HARDWARE
- CRACKS - REMOVE EXISTING PATCHES. RE-PATCH USING MATERIAL THAT MATCHES POLE PER SPECIFICATIONS
- CRACKS, SEVERE - REMOVE LOOSE MATERIAL. REMOVE RUST FROM ANY EXPOSED STEEL. PATCH PER SPECIFICATIONS

- THE CITY OF PHOENIX HISTORIC ARCHAEOLOGY OFFICE SHALL BE CONTACTED PRIOR TO ANY UNDERGROUND WORK IN THIS AREA.
- INSTALL PRECAST CONCRETE REPLICA MARBELITE REPLACEMENT POLE
- POLE IS HISTORIC PRECAST TYPE THAT IS BEYOND REPAIR. REPLACE WITH PRECAST CONCRETE REPLICA REPLACEMENT POLE.
- FINISH - CLEAN SURFACE. REMOVE SPRAY PAINT GRAFFITI, APPLY SEALER.

LIGHT POLE LEGEND

- POLE # 0000 HISTORIC METAL POLE - THE UNION METAL MANUFACTURING CO.
- POLE # 0000 HISTORIC PRECAST CONCRETE POLE - MARBELITE
- POLE # 0000 HISTORIC PRECAST CONCRETE POLE - MANUFACTURER UNKNOWN
- POLE # 0000 NON HISTORIC PRECAST CONCRETE POLE - AMERON INTERNATIONAL

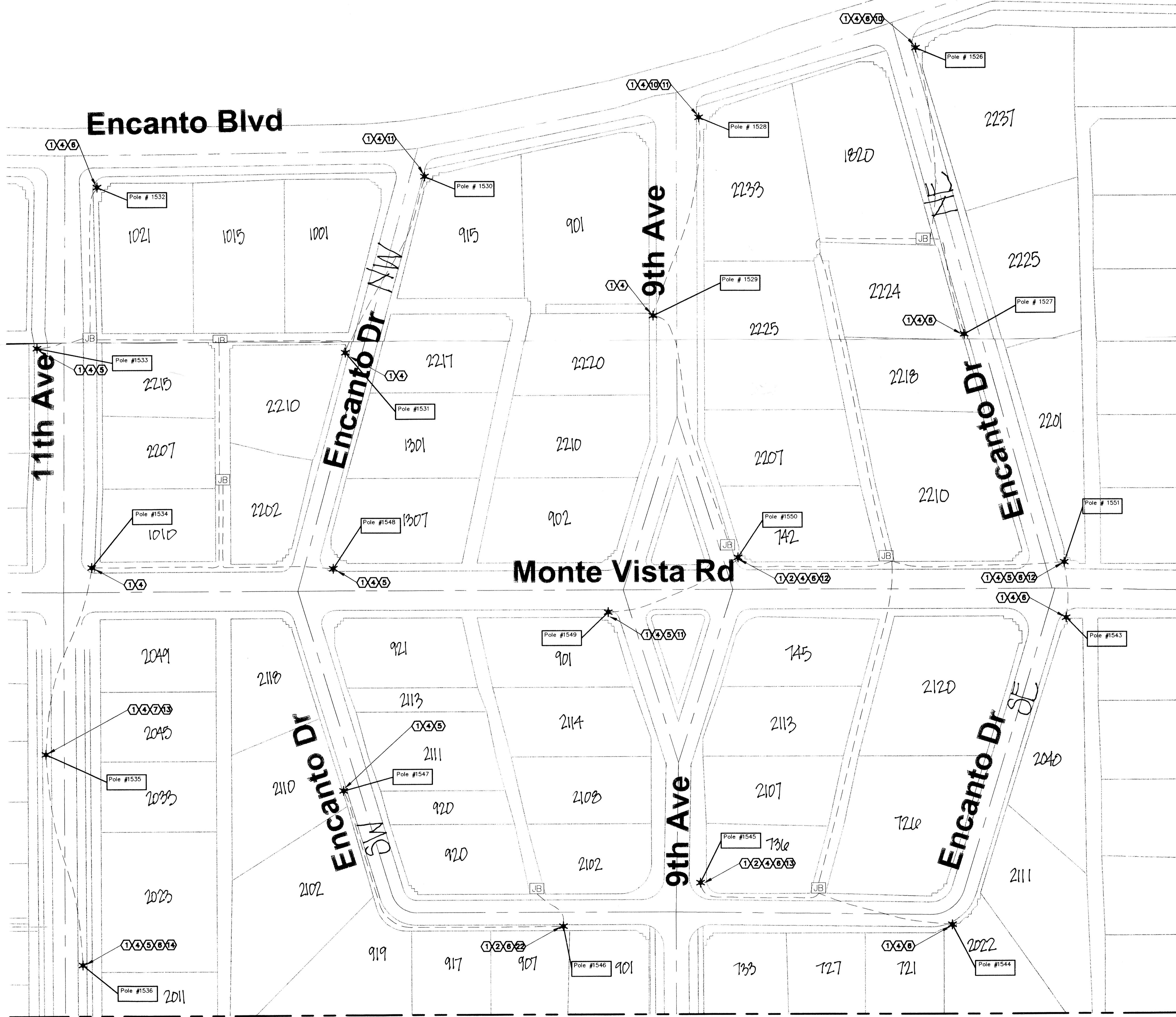
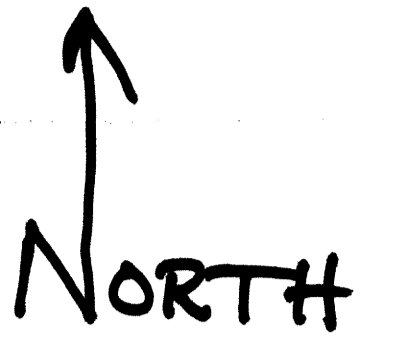


PROJECT NUMBER ST85150005

		16719 E. Palisades Blvd., Suite 202 Fountain Hills, AZ 85268 Phone: (480) 816-5541 Fax: (480) 816-5540
		<p>HISTORIC ENCANTO DISTRICT ENLARGED SITE PLAN FOR CONCRETE POLES</p>
JOB NO. 020302	DATE: 1/10 DESIGNED: KEL	DRAWN: KEL CHECKED: JGA

CONCRETE POLES

8th Ave



MATCH LINE
SEE SHEET E.3.3
FOR CONTINUATION

GENERAL NOTES

- ALL LUMINAIRES SHALL BE REPLACED, DISCONNECTED AND REMOVED EXISTING LUMINAIRE AND SHALL BE RETURNED TO OWNER. CONNECT NEW LUMINAIRE USING EXISTING CONDUCTORS.
- INSTALL SA IN-LINE FUSE AT BASE OF ALL POLES.
- HISTORIC CONCRETE POLE SHOWN FOR CONDUIT/CONDUCTOR CONTINUITY PURPOSE ONLY - N/A
- CONTRACTOR SHALL GET PRIOR APPROVAL FROM THE CHPO AND ARCHITECT BEFORE STARTING GENERAL WORK FOR THE PROJECT.
- REPLACEMENT HARDWARE SHOULD MATCH EXISTING IN SIZE, SHAPE AND FINISH.
- ALL CONCRETE PATCHES SHOULD BE TESTED TO MATCH EXISTING POLE PATTERNS AND TEXTURES.
- ALL HISTORIC LIGHT COMPONENTS TO BE RE-INSTALLED SHOULD GO BACK TO THEIR ORIGINAL LOCATIONS.
- SALVAGE ANY REPLACED POLE SHAFTS - N/A
- ANY STEEL REPLACEMENT POLE SHALL BE FIELD VERIFIED FOR EXACT MATCH OF ALL DIMENSIONS MATCH EXISTING POLES - N/A
- CHPO SHALL APPROVE OF ALL MATERIALS AND REPLACEMENT PARTS PRIOR TO CONSTRUCTION.

- CONTRACTOR SHALL PROVIDE TO CHPO A GENERAL CHRONOLOGY OF WORK FOR APPROVAL PRIOR TO CONSTRUCTION.
- CONTRACTOR SHALL REMOVE EXISTING WIRE CLIP USED FOR HOLIDAY DECORATIONS PRIOR TO ANY WORK PERFORMED ON LIGHTS AND POLES. CONTRACTOR SHALL RE-INSTALL WIRE CLIP WHEN WORK ON LIGHT AND POLE IS COMPLETED.

KEYED NOTES

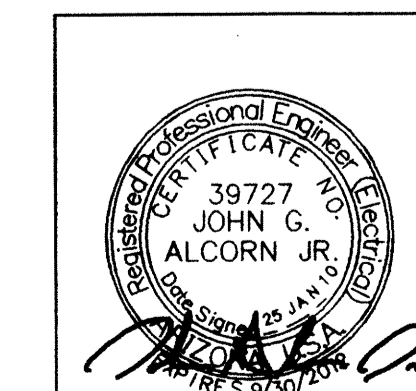
- REPLACE EXISTING LUMINAIRE.
- ACCESS BLOCK - REPLACE WITH REPLICA
- POLE IS INCOMPATIBLE TYPE FOR THE AREA. INSTALL PRECAST CONCRETE REPLICA REPLACEMENT POLE.
- FINISH - CLEAN SURFACE AND APPLY SEALER PER SPECIFICATIONS
- CRACKS - PATCH CRACKS PER SPECIFICATIONS
- HARDWARE - REPLACE BOLTS AT ACCESS BLOCK
- ACCESS BLOCK - REPAIR, PATCH CRACKS/REPLACE MISSING MATERIAL PER SPECIFICATIONS
- INTERCEPT EXISTING CONDUIT/CONDUCTORS. INSTALL SWEEPS INTO NEW JUNCTION BOX, RE-CONNECT CONDUCTORS.
- INSTALL NEW CONDUCTORS FROM NEW JUNCTION BOX TO LUMINAIRE. CONDUCTORS SHALL MATCH EXISTING CONDUCTORS IN SIZE.
- BASE - RESET POLE PLUMB
- CHPO(S) - PATCH SURFACE DAMAGE, REPLACE MISSING MATERIAL PER SPECIFICATIONS
- BASE - REMOVE SOIL, ADJUST GRADE ADJACENT TO POLE SO THAT SOIL LEVEL IS AT/OR BELOW BOTTOM OF POLE
- HARDWARE - REPLACE BOLTS AT ACCESS BLOCK, REPLACE MISSING INTERIOR HARDWARE WITH NEW DESIGN
- BASE - REMOVE/RESET POLE ON NEW CONCRETE BASE. SEE DETAIL 608 ON SHEET E4.0.
- BASE - NEW CONCRETE BASE. SEE DETAIL 608 ON SHEET E4.0.
- ACCESS BLOCK - REPLACE WITH REPLICA, REPLACE ALL ACCESS BLOCK HARDWARE
- CRACKS - REMOVE EXISTING PATCHES, RE-PATCH USING MATERIAL THAT MATCHES POLE PER SPECIFICATIONS
- CRACKS - SEVERE - REMOVE LOOSE MATERIAL, REMOVE RUST FROM ANY EXPOSED STEEL, PATCH PER SPECIFICATIONS
- THE CITY OF PHOENIX HISTORIC ARCHAEOLOGY OFFICE SHALL BE CONTACTED PRIOR TO ANY UNDERGROUND WORK IN THIS AREA.
- INSTALL PRECAST CONCRETE REPLICA MARBELITE REPLACEMENT POLE
- POLE IS HISTORIC PRECAST TYPE THAT IS BEYOND REPAIR. REPLACE WITH PRECAST CONCRETE REPLICA REPLACEMENT POLE.
- FINISH - CLEAN SURFACE, REMOVE SPRAY PAINT GRAFFITI, APPLY SEALER.

LIGHT POLE LEGEND

- POLE # 0000 HISTORIC METAL POLE - THE UNION METAL MANUFACTURING CO.
- POLE # 0000 HISTORIC PRECAST CONCRETE POLE - MARBELITE
- POLE # 0000 HISTORIC PRECAST CONCRETE POLE - MANUFACTURER UNKNOWN
- POLE # 0000 NON HISTORIC PRECAST CONCRETE POLE - AMERON INTERNATIONAL

PROJECT NUMBER ST85150005

0 40 80
SCALE IN FEET

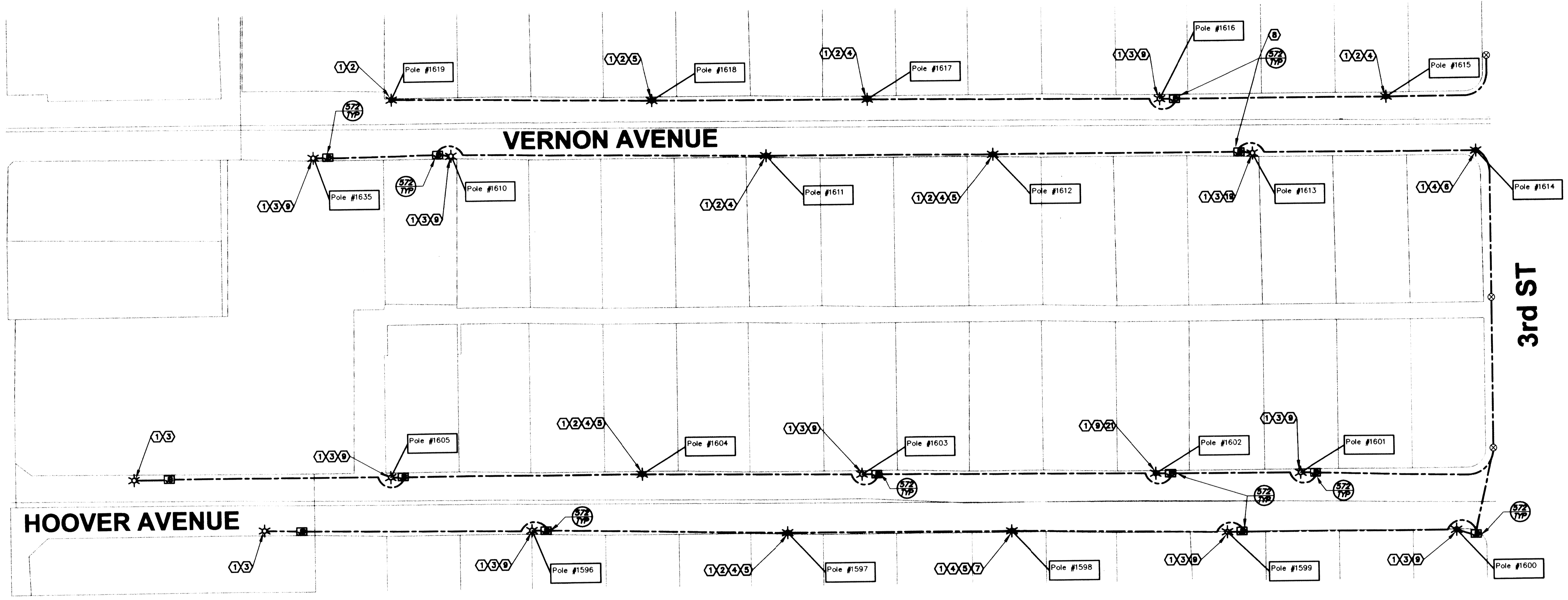


16719 E. Palisades Blvd., Suite Fountain Hills, AZ 85268
Phone: (480) 816-5541
Fax: (480) 816-5540

HISTORIC ENCANTO DISTRICT
ENLARGED SITE PLAN
FOR CONCRETE POLES

JOB NO. 020302 DATE 1/10 DRAWN: KEL
DESIGNED: KEL CHECKED: JGA

ASHLAND PLACE CONCRETE POLES



GENERAL NOTES

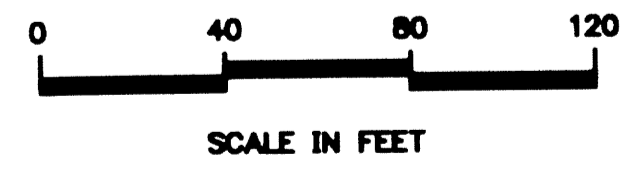
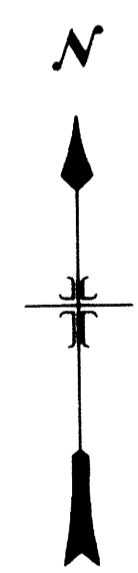
1. ALL LUMINAIRES SHALL BE REPLACED, DISCONNECTED AND REMOVED EXISTING LUMINAIRE AND SHALL BE RETURNED TO OWNER. CONNECT NEW LUMINAIRE USING EXISTING CONDUCTORS.
2. INSTALL SA IN-LINE FUSE AT BASE OF ALL POLES.
3. HISTORIC CONCRETE POLE SHOWN FOR CONDUIT/CONDUCTOR CONTINUITY PURPOSE ONLY N/A
4. CONTRACTOR SHALL GET PRIOR APPROVAL FROM THE CHPO AND ARCHITECT BEFORE STARTING GENERAL WORK FOR THE PROJECT.
5. REPLACEMENT HARDWARE SHOULD MATCH EXISTING IN SIZE, SHAPE AND FINISH.
6. ALL CONCRETE PATCHES SHOULD BE TESTED TO MATCH EXISTING POLE PATTERNS AND TEXTURES.
7. ALL HISTORIC LIGHT COMPONENTS TO BE RE-INSTALLED SHOULD GO BACK TO THEIR ORIGINAL LOCATIONS.
8. SALVAGE ANY REPLACED POLE SHAPES N/A
9. ANY STEEL REPLACEMENT POLE SHALL BE FIELD VERIFIED FOR EXACT MATCH OF ALL DIMENSIONS MATCH EXISTING POLES N/A
10. CHPO SHALL APPROVE OF ALL MATERIALS AND REPLACEMENT PARTS PRIOR TO CONSTRUCTION.
11. CONTRACTOR SHALL PROVIDE TO CHPO A GENERAL CHRONOLOGY OF WORK FOR APPROVAL PRIOR TO CONSTRUCTION.
12. CONTRACTOR SHALL REMOVE EXISTING WIRE CLIP USED FOR HOLIDAY DECORATIONS PRIOR TO ANY WORK PERFORMED ON LIGHTS AND POLES. CONTRACTOR SHALL RE-INSTALL WIRE CLIP WHEN WORK ON LIGHT AND POLE IS COMPLETED.

KEYED NOTES

1. REPLACE EXISTING LUMINAIRE.
2. ACCESS BLOCK - REPLACE WITH REPLICA
3. POLE IS INCOMPATIBLE TYPE FOR THE AREA. INSTALL PRECAST CONCRETE REPLICA REPLACEMENT POLE.
4. FINISH - CLEAN SURFACE AND APPLY SEALER PER SPECIFICATIONS
5. CRACKS - PATCH CRACKS PER SPECIFICATIONS
6. HARDWARE - REPLACE BOLTS AT ACCESS BLOCK
7. ACCESS BLOCK - REPAIR, PATCH CRACKS/REPLACE MISSING MATERIAL PER SPECIFICATIONS
8. INTERCEPT EXISTING CONDUIT/CONDUCTORS. INSTALL SWEEPS INTO NEW JUNCTION BOX, RE-CONNECT CONDUCTORS.
9. INSTALL NEW CONDUCTORS FROM NEW JUNCTION BOX TO LUMINAIRE. CONDUCTORS SHALL MATCH EXISTING CONDUCTORS IN SIZE.
10. BASE - RESET POLE PLUMB
11. CHIP(S) - PATCH SURFACE DAMAGE, REPLACE MISSING MATERIAL PER SPECIFICATIONS
12. BASE - REMOVE SOIL/ADJUST GRADE ADJACENT TO POLE SO THAT SOIL LEVEL IS AT/OR BELOW BOTTOM OF POLE

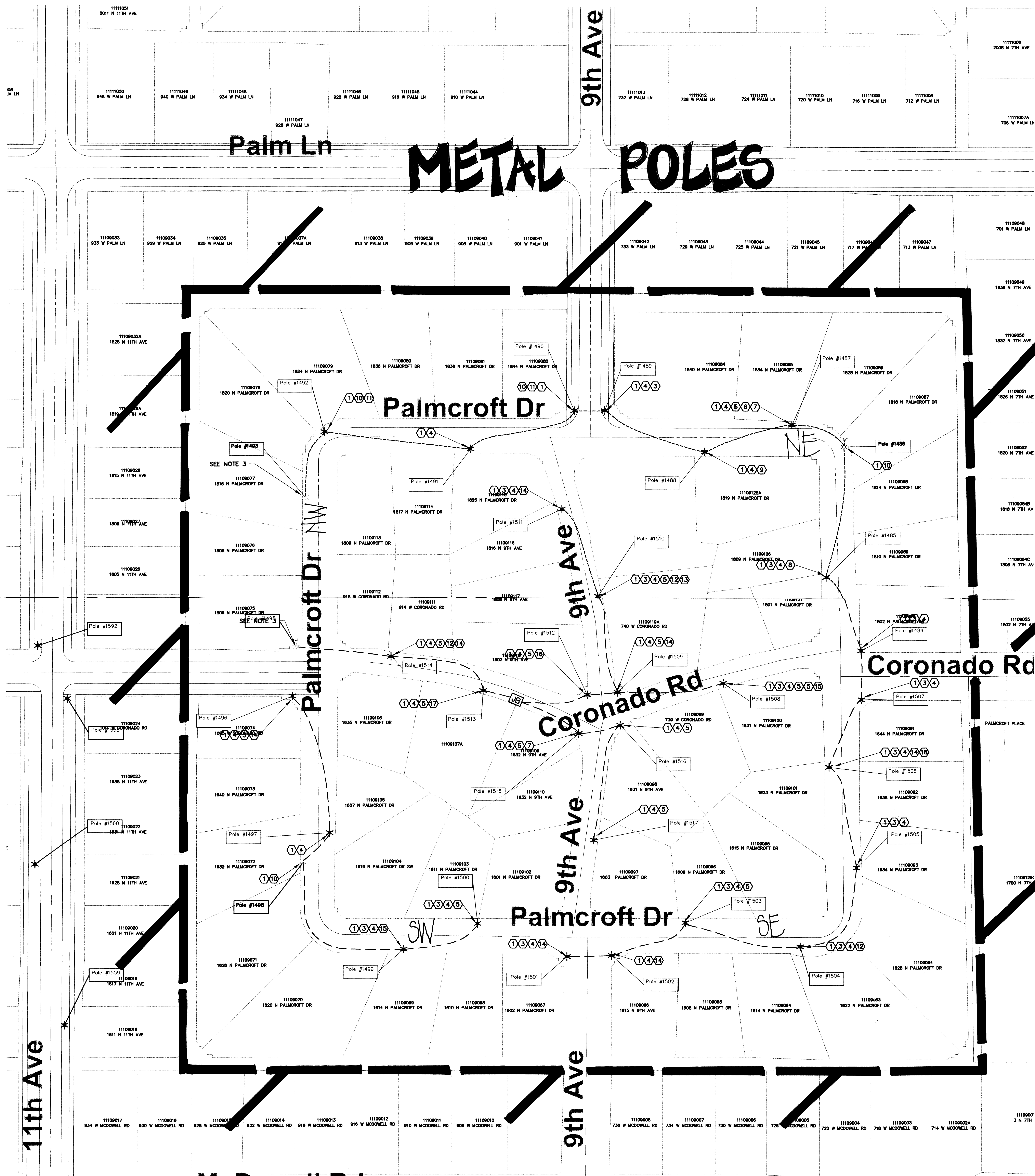
LIGHT POLE LEGEND

- POLE # 0000 HISTORIC PRECAST CONCRETE POLE - MARBELITE
- POLE # 0000 HISTORIC PRECAST CONCRETE POLE - MANUFACTURER UNKNOWN
- POLE # 0000 NON HISTORIC PRECAST CONCRETE POLE - AMERON INTERNATIONAL
- UTILITY POWER DISTRIBUTION POLE



PROJECT NUMBER ST85160005

		16719 E. Palisades Blvd., Suite 202 Fountain Hills, AZ 85268 Phone: (480) 816-5541 Fax: (480) 816-5540	E2.0
		HISTORIC ASHLAND PLACE ENLARGED SITE PLAN FOR CONCRETE POLES	
JOB NO. 070302	DATE 1/10 DESIGNED KEL	DRAWN KEL CHECKED JGA	



KEYED NOTES

- ① REPLACE EXISTING LUMINAIRE
- ② FINISH - REMOVE RUST USING CHEMICAL RUST REMOVER PRIME AND PAINT PER SPECIFICATIONS
- ③ STEEL SURFACE DING/DENTS - FILL WITH BODY FILLER
- ④ FINISH - REMOVE RUST USING CHEMICAL RUST REMOVER PRIME AND PAINT PER SPECIFICATIONS
- ⑤ HARDWARE - REPLACE BOLT/LATCH AT ALUMINUM ACCESS PANEL
- ⑥ CAST IRON PART - PROVIDE REPLACEMENT EGG & DART RING
- ⑦ STEEL SHAFT - REPAIR SHAFT, SEAL BASE OF SHAFT
- ⑧ STEEL SHAFT - UNBEND AND SEAL BASE OF SHAFT
- ⑨ STEEL SHAFT - REPAIR SHAFT OR REPLACE, IF AVAILABLE
- ⑩ REPLACEMENT - INSTALL STEEL REPLICA POLE (UNION METAL)
- ⑪ SALVAGE - ANY REUSABLE HISTORIC COMPONENTS
- ⑫ CAST IRON PART - REPLACE MISSING PART WITH REPLICA OR SALVAGED PART
- ⑬ STEEL SHAFT - REPAIR LARGE DENT
- ⑭ ANCHOR BOLTS - REMOVE SURFACE CORROSION, COAT WITH ANTI CORROSION SEALER
- ⑮ STEEL SHAFT - REPAIR DENT AND GAP IN SEAM, SEAL BASE OF SHAFT, CRIMP BACK TO ORIGINAL CONDITION
- ⑯ CAST IRON PARTS - REPLACE WITH FILLER
- ⑰ STEEL SHAFT - REPLACE
- ⑱ THE CITY ARCHAEOLOGY OFFICE SHALL BE CONTACTED PRIOR TO ANY UNDERGROUND WORK IN THIS AREA

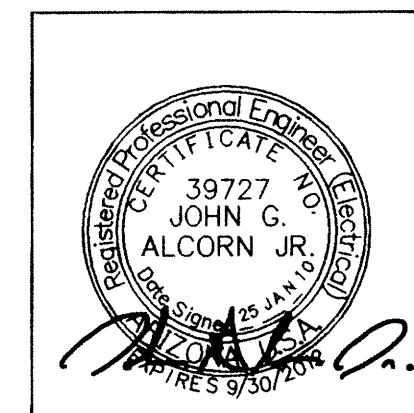
GENERAL NOTES

1. ALL LUMINAIRES SHALL BE REPLACED, DISCONNECTED AND REMOVED. EXISTING LUMINAIRE AND SHALL BE RETURNED TO OWNER. CONNECT NEW LUMINAIRE USING EXISTING CONDUCTORS.
2. INSTALL 5A IN-LINE FUSE AT BASE OF ALL POLES.
3. HISTORIC CONCRETE POLE SHOWN FOR CONDUIT/CONDUCTOR CONTINUITY PURPOSE ONLY
4. CONTRACTOR SHALL GET PRIOR APPROVAL FROM THE CHPO AND ARCHITECT BEFORE STARTING GENERAL WORK FOR THE PROJECT.
5. REPLACEMENT HARDWARE SHOULD MATCH EXISTING IN SIZE, SHAPE AND FINISH.
6. ALL HISTORIC LIGHT COMPONENTS TO BE RE-INSTALLED SHOULD GO BACK TO THEIR ORIGINAL LOCATIONS.
7. SALVAGE ANY REPLACED POLE SHAFTS.
8. ANY STEEL REPLACEMENT POLE SHALL BE FIELD VERIFIED FOR EXACT MATCH OF ALL DIMENSIONS MATCH EXISTING POLES.
9. CHPO SHALL APPROVE OF ALL MATERIALS AND REPLACEMENT PARTS PRIOR TO CONSTRUCTION.
10. CONTRACTOR SHALL PROVIDE TO CHPO A GENERAL CHRONOLOGY OF WORK FOR APPROVAL PRIOR TO CONSTRUCTION.

LIGHT POLE LEGEND

- ☼ POLE # 0000 HISTORIC METAL POLE - THE UNION METAL MANUFACTURING CO.
- ☼ POLE # 0000 NON HISTORIC PRECAST CONCRETE POLE - AMERON INTERNATIONAL

PROJECT NUMBER ST85150003FA



HISTORIC ENCANTO DISTRICT
ENLARGED SITE PLAN
FOR STEEL POLES

16719 E. Palisades Blvd., Suite 202
Fountain Hills, AZ 85268
Phone: (480) 816-5541
Fax: (480) 816-5540

DESIGNED: JEL
CHECKED: JGA
DATE: 1/10

ES3.