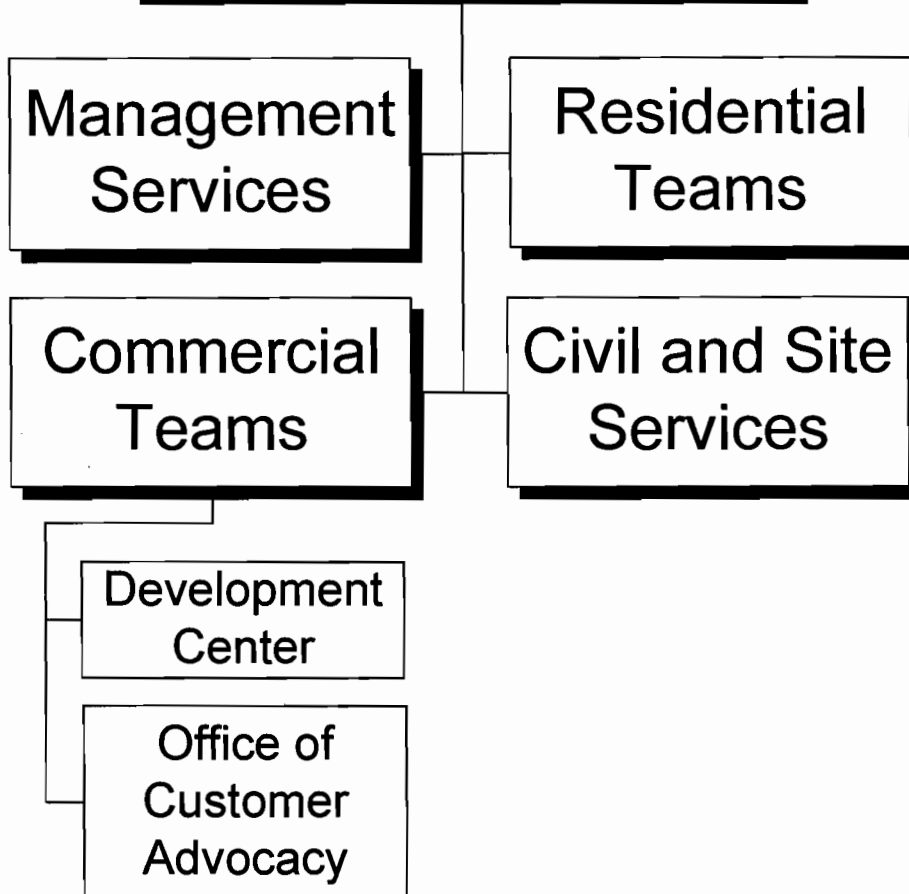


Development Services



DEPARTMENT SUMMARY

PROGRAM	DEPARTMENT			DEPARTMENT NO.
Community Development	Development Services			85
Program Goal				
The Development Services Department manages the development approval process to ensure the construction of safe buildings and compatible site improvements that enhance the urban environment and promote economic vitality.				
EXPENDITURES BY CHARACTER				
CHARACTER	2005-06 ACTUAL EXPENDITURES	2006-07 ESTIMATED EXPENDITURES	2007-08 COUNCIL ALLOWANCE	PERCENT CHANGE FROM 2006-07 ESTIMATE
PERSONAL SERVICES	\$ 36,899,408	\$ 42,013,449	\$ 49,405,339	17.6%
CONTRACTUAL SERVICES	3,833,940	4,055,814	4,252,537	4.9%
INTERDEPARTMENTAL CHARGES AND CREDITS	4,496,258	4,343,185	5,158,627	18.8%
SUPPLIES	1,632,958	1,868,656	2,004,500	7.3%
EQUIPMENT AND MINOR IMPROVEMENTS	864,563	1,823,880	365,300	-80.0%
DEBT SERVICE PAYMENTS	-	-	-	-
MISCELLANEOUS TRANSFERS	137,605	-	-	-
TOTAL	\$ 47,864,732	\$ 54,104,984	\$ 61,186,303	13.1%
AUTHORIZED POSITIONS				
FULL-TIME POSITIONS	520.0	567.0	572.0	0.9%
PART-TIME POSITIONS (FTE)	3.0	3.0	4.0	33.3%
TOTAL	523.0	570.0	576.0	1.1%
SOURCE OF FUNDS				
Development Services Funds	\$ 47,536,732	\$ 53,533,034	\$ 60,544,107	13.1%
Other Restricted Funds	328,000	571,950	642,196	12.3%
TOTAL	\$ 47,864,732	\$ 54,104,984	\$ 61,186,303	13.1%
CITY OF PHOENIX, ARIZONA				

2007-2008 OPERATING BUDGET

DEPARTMENT DETAIL

PROGRAM	DEPARTMENT		DEPARTMENT NO.
Community Development	Development Services		85
ORGANIZATION DETAIL	2005-2006 ACTUAL EXPENDITURES	2006-2007 ESTIMATED EXPENDITURES	2007-2008 COUNCIL ALLOWANCE
Administration			
Director's Office	\$777,437	\$1,052,736	\$1,525,770
Information Services	3,663,974	3,925,542	3,345,273
Subtotal	4,441,411	4,978,278	4,871,043
Management Services			
Management Services Administration	3,464,043	4,663,604	4,241,791
Personnel and Training	589,972	759,746	801,476
Customer Resource Center	516,685	529,261	579,025
Records Management	645,858	841,849	984,746
Intern Program	49,720	140,103	225,035
Central Log-in Cashiering	823,757	969,857	1,114,801
Workload Management Program	318,254	330,001	330,000
Subtotal	6,408,289	8,234,421	8,276,874
Residential Services			
Deputy Director	181,531	259,106	301,642
Plans Review	2,182,868	2,613,665	3,269,896
Inspections	3,948,724	4,650,647	6,509,524
Subtotal	6,313,123	7,523,418	10,081,062
Commercial Services			
Deputy Director Plan Review	1,129,139	1,514,510	1,661,068
Plan Review	4,767,695	5,040,927	5,980,586
Deputy Director - Inspections	-	-	191,679
Commercial Inspections	6,535,565	7,044,814	7,879,819
Elevator Inspections	495,195	606,115	654,624
Backflow Prevention	30,892	757,049	828,601
Sign Plan Review/Inspections	586,754	686,682	729,692
Investigations	697,319	873,614	919,488
Office of Business Advocacy	-	-	392,849
Manager Development Center	379,857	343,537	375,898
Subtotal	14,622,416	16,867,248	19,614,304
Civil and Site Services			
Manager	269,829	270,921	298,924
Site Planning Plan Review	1,891,926	2,310,975	2,654,850
Civil Plan Review	2,411,775	2,420,585	2,699,720
Civil Inspection	5,300,225	5,379,737	5,765,332
Civil and Water Counter	962,524	1,050,627	1,165,651
Landscape Services	746,956	725,589	599,916
Subtotal	11,583,235	12,158,434	13,184,393
Inter-Departmental Charges	4,496,258	4,343,185	5,158,627
Total	\$ 47,864,732	\$54,104,984	\$61,186,303

2007-2008 OPERATING BUDGET

PROGRAM CHANGES

PROGRAM	DEPARTMENT				DEPARTMENT NO.
Community Development	Development Services				85
DESCRIPTION	2007-2008				ADDITIONAL 2008-2009 COSTS
	REDUCTIONS		ADDITIONS		
	POSITIONS	AMOUNT	POSITIONS	AMOUNT	
Add staff recommended by a recent organizational analysis to increase administrative support and manage span of control.			4.0	\$358,000	
Add a Plan Review Coordinator position to enhance customer service for the Development Center - Customer Counter and reduce wait times.			1.0	99,000	
Add a position for the Development Services Department Intern Program to address workload needs.			1.0	-	
Convert a temporary Personnel Analyst II to regular status to assist with national and local recruitment efforts to fill technical vacancies.			-	-	
Convert a temporary Planner III for Light Rail coordination to regular status to assist displaced businesses in obtaining building permits for new sites or tenant improvements due to light rail.			-	-	
Total			6.0	\$457,000	

2007-2008 OPERATING BUDGET

POSITION SCHEDULE

PROGRAM		DEPARTMENT		DEPARTMENT NO.	
Community Development		Development Services		85	
ORGANIZATIONAL DETAIL/ CLASSIFICATION TITLE	PAY RANGE	2005-06	2006-07	2007-08	
		AUTHORIZED POSITIONS AS OF 6/30/06	AUTHORIZED POSITIONS AS OF 6/30/07	ADDITIONS/ REDUCTIONS	AUTHORIZED POSITIONS
SUMMARY BY DIVISION					
Administration		27.0	30.0	-	30.0
Management Services		63.5	64.5	3.0	67.5
Residential Services		98.0	127.0	-	127.0
Commercial Services		191.0	205.0	3.0	208.0
Civil and Site Services		143.5	143.5	-	143.5
Total Development Services		523.0	570.0	6.0	576.0
DETAIL BY DIVISION					
Administration					
Director's Office					
<u>Full Time</u>					
Development Services Dir	908	1.0	1.0	-	1.0
Asst Development Services Dir	904	2.0	2.0	-	2.0
Management Asst II	037	1.0	1.0	-	1.0
Admin Secretary	027	1.0	1.0	-	1.0
Secretary III	025	1.0	1.0	-	1.0
Total Full Time		6.0	6.0	-	6.0
<u>Temporary</u>					
Special Projects Administrator	840	-	2.0	-	2.0
Total Temporary		-	2.0	-	2.0
Total Director's Office		6.0	8.0	-	8.0
Information Services					
<u>Full Time</u>					
GIS Technician	330	1.0	1.0	-	1.0
User Support Specialist	330	1.0	2.0	-	2.0
Info Tech Project Manager	041	1.0	1.0	-	1.0
Info Tech Analyst/Prg III	039	4.0	4.0	-	4.0
Info Tech Analyst/Prg II	037	5.0	5.0	-	5.0
Senior User Technology Spec	037	2.0	2.0	-	2.0
User Technology Specialist	035	4.0	4.0	-	4.0
Info Tech Service Specialist	033	1.0	1.0	-	1.0
Senior GIS Technician	032	2.0	2.0	-	2.0
Total Full Time		21.0	22.0	-	22.0
Total Information Services		21.0	22.0	-	22.0
Total Administration		27.0	30.0	-	30.0

2007-2008 OPERATING BUDGET

POSITION SCHEDULE

PROGRAM		DEPARTMENT		DEPARTMENT NO.	
Community Development		Development Services		85	
ORGANIZATIONAL DETAIL/ CLASSIFICATION TITLE	PAY RANGE	2005-06	2006-07	2007-08	
		AUTHORIZED POSITIONS AS OF 6/30/06	AUTHORIZED POSITIONS AS OF 6/30/07	ADDITIONS/ REDUCTIONS	AUTHORIZED POSITIONS
Management Services					
Management Services Administration					
<u>Full Time</u>					
Management Services Adm	841	1.0	1.0	-	1.0
Admin Aide	326	1.0	1.0	-	1.0
Account Clerk III	325	4.0	4.0	-	4.0
Info Tech Analyst/Prg III	039	1.0	1.0	-	1.0
Department Budget Supervisor	037	-	-	1.0	1.0
Management Asst II	037	1.0	1.0	-	1.0
Rate Analyst	036	1.0	1.0	-	1.0
Accountant III	035	1.0	1.0	-	1.0
Budget Analyst II	035	1.0	1.0	-	1.0
Public Information Officer	035	-	1.0	-	1.0
Accountant II	032	1.0	1.0	-	1.0
Admin Asst I	030	1.0	1.0	-	1.0
Secretary III	025	1.0	1.0	-	1.0
Total Full Time		14.0	15.0	1.0	16.0
Total Management Services Administration		14.0	15.0	1.0	16.0
Personnel and Training					
<u>Full Time</u>					
Personnel Aide	726	1.0	1.0	-	1.0
Personnel Clerk II	723	2.0	2.0	-	2.0
Personnel Supervisor	038	1.0	1.0	-	1.0
Curriculum/Training Coord	033	1.0	1.0	-	1.0
Personnel Analyst II	033	-	-	1.0	1.0
Training Specialist	030	1.0	1.0	-	1.0
Total Full Time		6.0	6.0	1.0	7.0
<u>Temporary</u>					
Personnel Analyst II	033	1.0	1.0	(1.0)	-
Total Temporary		1.0	1.0	(1.0)	-
Total Personnel and Training		7.0	7.0	-	7.0
Customer Resource Center					
<u>Full Time</u>					
Engineering Tech	324	3.0	3.0	-	3.0
Customer Service Clerk*Plans	322	5.0	5.0	-	5.0
Secretary II	321	1.0	1.0	-	1.0
Clerical Supervisor	027	1.0	1.0	-	1.0
Total Full Time		10.0	10.0	-	10.0
Total Customer Resource Center		10.0	10.0	-	10.0

2007-2008 OPERATING BUDGET

POSITION SCHEDULE

PROGRAM		DEPARTMENT	DEPARTMENT NO.		
Community Development		Development Services	85		
ORGANIZATIONAL DETAIL/ CLASSIFICATION TITLE	PAY RANGE	2005-06	2006-07	2007-08	
		AUTHORIZED POSITIONS AS OF 6/30/06	AUTHORIZED POSITIONS AS OF 6/30/07	ADDITIONS/ REDUCTIONS	AUTHORIZED POSITIONS
Records Management					
<u>Full Time</u>					
Engineering Tech	324	1.0	1.0	-	1.0
Records Clerk II	322	8.0	8.0	-	8.0
Management Asst II	037	1.0	1.0	-	1.0
Admin Asst I	030	1.0	1.0	-	1.0
Records Supervisor	027	1.0	1.0	-	1.0
Records Clerk III	026	1.0	1.0	-	1.0
Total Full Time		13.0	13.0	-	13.0
Total Records Management		13.0	13.0	-	13.0
Intern Program					
<u>Part Time</u>					
Structural Plans Examiner I	333	-	-	1.0	1.0
Engineering Tech	324	2.5	2.5	-	2.5
Total Part Time		2.5	2.5	1.0	3.5
Total Intern Program		2.5	2.5	1.0	3.5
Central Log-in Cashiering					
<u>Full Time</u>					
Senior Engineering Tech	328	1.0	1.0	-	1.0
Engineering Tech	324	14.0	14.0	-	14.0
Plan Review Coordinator	037	-	-	1.0	1.0
Planner III	037	1.0	1.0	-	1.0
Admin Asst I	030	1.0	1.0	-	1.0
Total Full Time		17.0	17.0	1.0	18.0
Total Central Log-in Cashiering		17.0	17.0	1.0	18.0
Total Management Services		63.5	64.5	3.0	67.5
Residential Services					
Deputy Director					
<u>Full Time</u>					
Deputy Development Svcs Dir	842	1.0	1.0	-	1.0
Management Asst II	037	-	1.0	-	1.0
Secretary III	025	1.0	1.0	-	1.0
Total Full Time		2.0	3.0	-	3.0
Total Deputy Director		2.0	3.0	-	3.0

2007-2008 OPERATING BUDGET

POSITION SCHEDULE

PROGRAM		DEPARTMENT		DEPARTMENT NO.	
Community Development		Development Services		85	
ORGANIZATIONAL DETAIL/ CLASSIFICATION TITLE	PAY RANGE	2005-06	2006-07	2007-08	
		AUTHORIZED POSITIONS AS OF 6/30/06	AUTHORIZED POSITIONS AS OF 6/30/07	ADDITIONS/ REDUCTIONS	AUTHORIZED POSITIONS
Plan Review					
<u>Full Time</u>					
Electrical Plans Examiner II	335	1.0	1.0	-	1.0
Const Permit Spec II	334	22.0	22.0	-	22.0
Chief Engineering Tech	331	3.0	3.0	-	3.0
Senior Engineering Tech	328	2.0	2.0	-	2.0
Engineering Tech	324	9.0	9.0	-	9.0
Civil Engineer III*Team Ldr	040	1.0	1.0	-	1.0
Structural Plans Eng*Team Ldr	040	1.0	1.0	-	1.0
Const Permit Supv	036	2.0	2.0	-	2.0
Principal Engineering Tech	035	2.0	2.0	-	2.0
Total Full Time		43.0	43.0	-	43.0
Total Plan Review		43.0	43.0	-	43.0
Inspections					
<u>Full Time</u>					
General Inspector II	333	47.0	72.0	-	72.0
General Inspections Supervisor	037	1.0	2.0	-	2.0
General Insp Field Supv	036	5.0	7.0	-	7.0
Total Full Time		53.0	81.0	-	81.0
Total Inspections		53.0	81.0	-	81.0
Total Residential Services		98.0	127.0	-	127.0
Commercial Services					
Deputy Director - Plan Review					
<u>Full Time</u>					
Deputy Development Svcs Dir	842	1.0	1.0	-	1.0
Senior Engineering Tech	328	1.0	1.0	-	1.0
Engineering Tech	324	13.0	13.0	-	13.0
Secretary II	321	3.0	3.0	-	3.0
Structural Plans Engineer	039	1.0	1.0	-	1.0
Management Asst II	037	1.0	1.0	-	1.0
Planner III	037	-	-	1.0	1.0
Admin Asst I	030	2.0	2.0	-	2.0
Secretary III	025	1.0	1.0	-	1.0
Total Full Time		23.0	23.0	1.0	24.0
<u>Temporary</u>					
Planner III	037	-	1.0	(1.0)	-
Total Temporary		-	1.0	(1.0)	-
Total Deputy Director - Plan Review		23.0	24.0	-	24.0

2007-2008 OPERATING BUDGET

POSITION SCHEDULE

PROGRAM		DEPARTMENT	DEPARTMENT NO.			
Community Development		Development Services	85			
ORGANIZATIONAL DETAIL/ CLASSIFICATION TITLE	PAY RANGE	2005-06	2006-07	2007-08		
		AUTHORIZED POSITIONS AS OF 6/30/06	AUTHORIZED POSITIONS AS OF 6/30/07	ADDITIONS/REDUCTIONS	AUTHORIZED POSITIONS	
Plan Review						
<u>Full Time</u>						
Building Code Examiner*Lead	336	2.0	2.0	-	2.0	
Building Code Examiner	335	4.0	4.0	-	4.0	
Electrical Plans Examiner II	335	9.0	9.0	-	9.0	
Mechanical Plans Examiner II	335	9.0	9.0	-	9.0	
Structural Plans Examiner II	335	4.0	4.0	-	4.0	
Fire Prevention Spec II	333	2.0	2.0	-	2.0	
Architect*Team Ldr	040	3.0	3.0	-	3.0	
Senior Structural Plans Eng	040	1.0	1.0	-	1.0	
Structural Plans Eng*Team Ldr	040	3.0	3.0	-	3.0	
Architect	039	2.0	2.0	-	2.0	
Electrical Plans Engineer	039	1.0	1.0	-	1.0	
Fire Protection Eng*Team Ldr	039	1.0	1.0	-	1.0	
Mechanical Plans Engineer	039	1.0	1.0	-	1.0	
Structural Plans Engineer	039	10.0	10.0	-	10.0	
Traffic Engineer III	039	1.0	1.0	-	1.0	
Fire Protection Engineer	038	2.0	2.0	-	2.0	
Plan Review Coordinator	037	1.0	1.0	-	1.0	
Total Full Time		56.0	56.0	-	56.0	
<u>Temporary</u>						
Building Code Examiner*Lead	336	-	1.0	-	1.0	
Total Temporary		-	1.0	-	1.0	
Total Plan Review		56.0	57.0	-	57.0	
Deputy Director - Inspections						
<u>Full Time</u>						
Deputy Development Svcs Dir	842	-	-	1.0	1.0	
Secretary II	321	-	-	1.0	1.0	
Secretary III	025	-	-	1.0	1.0	
Total Full Time		-	-	3.0	3.0	
Total Deputy Director - Inspections		-	-	3.0	3.0	

2007-2008 OPERATING BUDGET

POSITION SCHEDULE

PROGRAM		DEPARTMENT		DEPARTMENT NO.	
Community Development		Development Services		85	
ORGANIZATIONAL DETAIL/ CLASSIFICATION TITLE	PAY RANGE	2005-06	2006-07	2007-08	
		AUTHORIZED POSITIONS AS OF 6/30/06	AUTHORIZED POSITIONS AS OF 6/30/07	ADDITIONS/ REDUCTIONS	AUTHORIZED POSITIONS
Commercial Inspections					
<u>Full Time</u>					
Electrical Insp II*Ind/PR	335	8.0	9.0	-	9.0
Plumbing/Mech Insp II*Ind/PR	335	8.0	9.0	-	9.0
Structural Inspector II*Ind/PR	335	7.0	9.0	-	9.0
Electrical Inspector II	333	14.0	14.0	-	14.0
Plumbing/Mech Insp II	333	12.0	12.0	-	12.0
Structural Inspector II	333	16.0	16.0	-	16.0
Engineering Tech	324	2.0	2.0	-	2.0
Electrical Inspections Supv	037	1.0	1.0	-	1.0
Plumbing/Mechanical Insp Supv	037	1.0	1.0	-	1.0
Structural Inspections Supv	037	2.0	2.0	-	2.0
Electrical Insp Field Supv	036	2.0	3.0	-	3.0
Plumbing/Mech Insp Field Supv	036	2.0	2.0	-	2.0
Structural Insp Field Supv	036	2.0	3.0	-	3.0
Total Full Time		77.0	83.0	-	83.0
<u>Temporary</u>					
Electrical Inspector II	333	1.0	-	-	-
Total Temporary		1.0	-	-	-
Total Commercial Inspections		78.0	83.0	-	83.0
Elevator Inspections					
<u>Full Time</u>					
Elevator Inspector II	333	6.0	6.0	-	6.0
Engineering Tech	324	1.0	1.0	-	1.0
Elevator Insp Field Supv	036	1.0	1.0	-	1.0
Total Full Time		8.0	8.0	-	8.0
Total Elevator Inspections		8.0	8.0	-	8.0
Backflow Prevention					
<u>Full Time</u>					
Plumbing/Mech Insp II*Ind/PR	335	1.0	1.0	-	1.0
Records Clerk II	322	-	2.0	-	2.0
Plumbing/Mech Insp Field Supv	036	-	1.0	-	1.0
Total Full Time		1.0	4.0	-	4.0
Total Backflow Prevention		1.0	4.0	-	4.0
Sign Plan Review/Inspections					
<u>Full Time</u>					
Sign Inspector	330	7.0	7.0	-	7.0
Engineering Tech	324	2.0	2.0	-	2.0
Customer Service Clerk*Plans	322	1.0	1.0	-	1.0
Sign Inspections Supervisor	035	1.0	1.0	-	1.0
Total Full Time		11.0	11.0	-	11.0
Total Sign Plan Review/Inspections		11.0	11.0	-	11.0

2007-2008 OPERATING BUDGET

POSITION SCHEDULE

PROGRAM		DEPARTMENT		DEPARTMENT NO.	
Community Development		Development Services		85	
ORGANIZATIONAL DETAIL/ CLASSIFICATION TITLE	PAY RANGE	2005-06	2006-07	2007-08	
		AUTHORIZED POSITIONS AS OF 6/30/06	AUTHORIZED POSITIONS AS OF 6/30/07	ADDITIONS/ REDUCTIONS	AUTHORIZED POSITIONS
Investigations					
<u>Full Time</u>					
Building Code Examiner	335	2.0	2.0	-	2.0
Electrical Plans Examiner II	335	1.0	1.0	-	1.0
Mechanical Plans Examiner II	335	1.0	1.0	-	1.0
General Inspector II	333	3.0	3.0	-	3.0
Site Development Supervisor	036	1.0	1.0	-	1.0
Admin Asst I	030	1.0	1.0	-	1.0
Total Full Time		9.0	9.0	-	9.0
Total Investigations		9.0	9.0	-	9.0
Office of Business Advocacy					
<u>Full Time</u>					
Business Assistance Adm	841	-	1.0	-	1.0
Economic Development Prog Mgr	038	-	1.0	-	1.0
Project Manager	036	-	2.0	-	2.0
Total Full Time		-	4.0	-	4.0
Total Office of Business Advocacy		-	4.0	-	4.0
Manager Development Center					
<u>Full Time</u>					
Development Center Coord	841	1.0	1.0	-	1.0
Secretary II	321	2.0	2.0	-	2.0
Management Asst I	031	1.0	1.0	-	1.0
Secretary III	025	1.0	1.0	-	1.0
Total Full Time		5.0	5.0	-	5.0
Total Manager Development Center		5.0	5.0	-	5.0
Total Commercial Services		191.0	205.0	3.0	208.0
Civil and Site Services					
Manager					
<u>Full Time</u>					
Business Assistance Adm	841	1.0	1.0	-	1.0
Engineering Tech	324	1.0	1.0	-	1.0
Planning Technician	324	1.0	1.0	-	1.0
Secretary III	025	1.0	1.0	-	1.0
Total Full Time		4.0	4.0	-	4.0
<u>Part Time</u>					
Planning Technician	324	-	-	-	-
Total Part Time		-	-	-	-
Total Manager		4.0	4.0	-	4.0

2007-2008 OPERATING BUDGET

POSITION SCHEDULE

PROGRAM		DEPARTMENT		DEPARTMENT NO.	
Community Development		Development Services		85	
ORGANIZATIONAL DETAIL/ CLASSIFICATION TITLE	PAY RANGE	2005-06	2006-07	2007-08	
		AUTHORIZED POSITIONS AS OF 6/30/06	AUTHORIZED POSITIONS AS OF 6/30/07	ADDITIONS/ REDUCTIONS	AUTHORIZED POSITIONS
Site Planning Plan Review					
<u>Full Time</u>					
Principal Planner	039	2.0	2.0	-	2.0
Planner III*Team Ldr	038	2.0	2.0	-	2.0
Planner III	037	2.0	2.0	-	2.0
Planner II	034	21.0	21.0	-	21.0
Planner I	030	4.0	4.0	-	4.0
Total Full Time		31.0	31.0	-	31.0
Total Site Planning Plan Review		31.0	31.0	-	31.0
Civil Plan Review					
<u>Full Time</u>					
Engineering Supervisor	840	1.0	1.0	-	1.0
Chief Engineering Tech	331	1.0	1.0	-	1.0
Traffic Engineer III*Team Ldr	040	1.0	1.0	-	1.0
Civil Engineer III	039	3.0	3.0	-	3.0
Traffic Engineer III	039	3.0	3.0	-	3.0
Plan Review Coordinator	037	1.0	1.0	-	1.0
Civil Engineer II	035	13.0	13.0	-	13.0
Principal Engineering Tech	035	4.0	4.0	-	4.0
Traffic Engineer II	035	1.0	1.0	-	1.0
Total Full Time		28.0	28.0	-	28.0
Total Civil Plan Review		28.0	28.0	-	28.0
Civil Inspection					
<u>Full Time</u>					
Civil Inspector III	334	10.0	10.0	-	10.0
Civil Inspector II	333	35.0	35.0	-	35.0
Civil Engineer III	039	2.0	2.0	-	2.0
Civil Inspections Field Supv	036	5.0	5.0	-	5.0
Principal Engineering Tech	035	5.0	5.0	-	5.0
Total Full Time		57.0	57.0	-	57.0
Total Civil Inspection		57.0	57.0	-	57.0
Civil and Water Counter					
<u>Full Time</u>					
Chief Engineering Tech	331	3.0	3.0	-	3.0
Senior Engineering Tech	328	5.0	5.0	-	5.0
Engineering Tech	324	6.0	6.0	-	6.0
Plan Review Coordinator	037	1.0	1.0	-	1.0
Principal Engineering Tech	035	2.0	2.0	-	2.0
Total Full Time		17.0	17.0	-	17.0
<u>Part Time</u>					
Engineering Tech	324	0.5	0.5	-	0.5
Total Part Time		0.5	0.5	-	0.5
Total Civil and Water Counter		17.5	17.5	-	17.5

2007-2008 OPERATING BUDGET

POSITION SCHEDULE

PROGRAM		DEPARTMENT		DEPARTMENT NO.	
Community Development		Development Services		85	
ORGANIZATIONAL DETAIL/ CLASSIFICATION TITLE	PAY RANGE	2005-06	2006-07	2007-08	
		AUTHORIZED POSITIONS AS OF 6/30/06	AUTHORIZED POSITIONS AS OF 6/30/07	ADDITIONS/ REDUCTIONS	AUTHORIZED POSITIONS
Landscape Services					
<u>Full Time</u>					
Planning Technician	324	1.0	1.0	-	1.0
Principal Landscape Architect	039	1.0	1.0	-	1.0
Landscape Architect II	036	1.0	1.0	-	1.0
Landscape Architect I	033	3.0	3.0	-	3.0
Total Full Time		6.0	6.0	-	6.0
Total Landscape Services		6.0	6.0	-	6.0
Total Civil and Site Services		143.5	143.5	-	143.5
Total Development Services		523.0	570.0	6.0	576.0