



Hohokam
THE

Exploring An Old Problem Without New Digging

By Larry Warner, Curator of Exhibits

Our newest changing exhibit, *Pieces of the Puzzle: New Perspectives on the Hohokam*, explores Hohokam population decline during the 14th and 15th centuries in southern Arizona. Archaeologists from the Center for Desert Archaeology, in Tucson, have been studying existing collections - some held right here at Pueblo Grande - for a clearer perspective on the causes of this population decline. They rely upon advances in artifact analyses and modern computer technologies to provide a clearer picture of demographic shifts, migrations into the region, and changes in pottery making. Together, these discoveries point to interesting trends in Hohokam population.

When you think of archaeology, typically the vision that comes to mind is dusty clothes, picks, shovels, brushes and hours sitting and digging. But the research upon which this exhibit is based was

done differently. Instead of digging, the archaeologists studied thousands of artifacts from collections at a number of repositories, including Pueblo Grande Museum, the Arizona State Museum, Arizona State University, and the Museum of Northern Arizona. This focus on the restudy of artifacts that have long since been excavated

and already exist in the collections of museums and archaeological repositories is a key research element of the Center for Desert Archaeology's mission of "preservation archaeology." Archaeologists at the Center use that term

to describe their commitment to conserving the fragile, irreplaceable archaeological record and to minimizing impacts to archaeological sites, while still pursuing meaningful research and education programs.

Through grants from the National Science Foundation, this research is presented for the first time at Pueblo Grande Museum. The exhibit debuted here, and will travel to other venues around the state afterwards. This dynamic exhibit explores methods for dating and analyzing existing archaeological materials; showcases how Geographical



Visitors enjoy Pueblo Grande Museum's newest exhibit - *Pieces of the Puzzle*.

continued on page 2

What's New At The Front Desk?

As of March 1, 2009 you may have noticed some changes at Pueblo Grande Museum's admissions desk that are a result of the recent City of Phoenix budget issues. Admission prices increased for adults and seniors to \$6 and \$5, admission for children ages 6 to 17 remained at \$3 and children ages 5 and under remained free. On Sundays children are free, but there is an admission charge for adults and seniors. Pueblo Grande Museum's Auxiliary members continue to receive free admission when they present their Auxiliary membership card.

For those interested in enrolling in one of our many programs, such as a workshop, hike, or class, the City of Phoenix has implemented a **recreation card** or **rec. card**. The **recreation card** is required to register for all of our programs; however, walk-in-visitors paying museum admission and visitors to our special



events, such as the Indian Market, do not need to obtain a **recreation card**.

Currently the **recreation card's** yearly rate is \$5; however, the new season (July 1, 2009 through June 30, 2010) brings with it a new fee. This new fee will reflect a difference in pricing between Phoenix residents and non-residents. The fee for the **recreation cards** as of July 1, 2009 will be:

Youth Resident \$5, Youth Non-Resident \$10, Adult Resident \$10, Adult Non-Resident \$20.

The new non-resident fee for the City of Phoenix also applies to programs and facility rentals. The non-resident fee will be 50% higher than prices listed. For example, a class or program listed at \$30 will be \$45 for participants that live outside of Phoenix. If an address is not listed, the non-resident rate will be calculated and applied at the time of registration. The 50% increase is the regional norm for other cities in the Phoenix metro area. Pueblo Grande Museum Auxiliary members will continue to receive a discount on programs whether they are resident or non-resident.

continued from page 1

Exploring An Old Problem Without New Digging

Information Systems(GIS) help better determine population growth and decline; and presents new viewpoints on just what happened to this ancient culture prior to European settlement. The exhibit uses some of

the latest innovations in computer animation to give visitors a "big picture" view of population movements and decline across the Southwest.

Plan to stop by and see how preservation archaeology has helped us gain new insights into Pueblo Grande Museum's favorite subject – the Hohokam!

Research Library Wish List

The theme of this newsletter is *sustainability*. An internet search on the topic revealed tons of web sites. Well actually 28 million hits, but who's counting? As you might expect many of the web sites contained a number of definitions for the word. A few common themes found in these definitions were nature, the economy, society, the process of change, and fairness between generations or groups. With this in mind we have chosen a couple of volumes for the research library's wish list:

Transforming Museum Volunteering:

A Practical Guide for Engaging 21st Century Volunteers

American Association of Museum Volunteers,
2007. \$30.00

Museums and New Technology

By Maria Economou
Routledge, 2009. \$35.95

Museums and the Public

Understanding of Current Research

Edited by David Chittenden, Graham Farmelo,
and Bruce V. Lewenstein
AltaMira Press, 2004. \$36.95

Environmental Change and Human Adaptation in the Ancient American Southwest

Edited by David E. Doyel and Jeffrey S. Dean
University of Utah Press, 2007. \$45.00

If you would like to help us acquire one of these books or donate funds toward the purchase of another volume for the library please contact Museum Aide Amanda Brite or Collections Assistant Laura Andrew via e-mail at pgm.library@phoenix.gov or by phone at 602-495-0901.

Big Thanks

The Pueblo Grande Museum Research Library continues to offer its patrons a wide selection of resources due to your generous donations. A great big thank you to Todd Bostwick, Cory Breternitz, Janice Klein, Holly Young, and the PGM Archaeology Office for their recent donations.

Article Deadline

The topic of the July - September issue of the newsletter is - **Let's Hear from You!** Now is your chance to let us know about a fun PGM experience you have had. Maybe you had a child ask you a funny question while on a tour, want to pass along a compliment from a guest, or just want to share a memory about the museum or a program. Please submit your articles and experiences to newsletter editor Laura Andrew by 5 pm, May 15, 2009. You can send them by e-mail laura.andrew@phoenix.gov or give her a call at 602-495-0901.





Bugs And Other Museum Pests

By Lindsey Vogel, Museum Aide - Collections

While monitoring insect traps last summer, I came across an unusual cockroach, a desert type of the genus *Arenivaga*. I researched to find out what kind of threat the roach posed to our collections. Using an online listserve I attached a picture of the roach and asked the question “does anyone know what they eat?” The response I received was “Try an oatmeal cookie.” After I stopped laughing, I realized that how museums approach pests may not be common knowledge.

Pueblo Grande Museum (PGM) employs a form of Integrated Pest Management (henceforth IPM). While our maintenance staff sparingly uses pesticides on the exterior of the building and areas of the property, inside the buildings we employ a non-toxic method for the sake of both the artifacts and employees. The museum version of IPM is a combined approach that aims to avoid or deter pests before they become a problem and to successfully treat an existing infestation.

PGM makes the museum less attractive to pests by restricting food and drink in the buildings, prohibiting consumption in collections areas and banning live plants within the main museum. In addition, the collections staff engages in monitoring pests, particularly in the collections areas and exhibit cases. Mainly we deploy sticky glue traps and regularly check them to see the types and quantity of pests entering the building. This helps us to create a baseline for what is “normal” and identify potential problems before they develop into infestations.

Our reactions to problems vary; sometimes all that’s needed is a thorough cleaning of an area. Or, for example, if we see an increase in silverfish following the delivery of a collection, we can combat the problem by disposing of all corrugated boxes delivered with the collection and deploying silverfish traps. Incoming organic materials such as rugs, baskets and wooden objects are frozen to combat an existing problem. By taking this preventative approach, the museum has managed to avoid infestations and increase the longevity of our collections.

Pueblo Grande Museum Mission Statement

Pueblo Grande Museum is an archaeological site museum and repository. We collect, preserve, research, interpret, and exhibit cultural materials from the site of Pueblo Grande and the Greater Southwest. The Museum, part of the City of Phoenix Parks and Recreation Department since 1929, is dedicated to enhancing the knowledge of prehistory, history, and ethnology of inhabitants of the Southwest, and promoting a greater understanding of the diversity of cultures past and present, for our guests and the citizens of Phoenix.

Talking About Ancient Technology

By Holly Young, Curator of Collections

Here's a piece that demonstrates not only the beauty and utility of ancient technology, but also why



sometimes I'm happy just to be able to go to Ace Hardware for what I need. It's a three-quarter grooved axe, an object found here at Pueblo Grande during the 1970s.

It's big (almost 28 centimeters or 11 inches long) and a lot of work went into making it. The stone used for axes by the Hohokam is really hard, probably because they were using them on something tough, like mesquite wood. Three-quarter grooved axes are relatively

consistent, except for size, so the people making them probably had a really good idea of what they wanted the tool to do and how best to accomplish that.

For all the time, care, and expertise that went into making this axe, it doesn't appear to ever have been used. Was it made as a culturally meaningful symbol, rather than a utilitarian object? Did the owner have to leave suddenly and travel lightly, so the axe was left behind?

Maybe there is a clue in the context of discovery – it was found in a pit, along with some pottery, that had been dug beneath the floor of a room on the west side of the Pueblo Grande platform mound. Thank goodness for careful excavation and note taking.



SALE

APRIL & MAY



April & May
Coupon Valid

Pueblo Grande Museum Store
15% Discount Under \$100.00



25% Discount Anything Over \$100.00

(with the exception of our books)

A Sustainable Auxiliary

By Larry Offenberg, Auxiliary President

Dictionaries offer several definitions of “sustainable.” In thinking about Pueblo Grande Museum the definition that struck me is “able to continue over a period of time.” Extending that definition to the Pueblo Grande Museum Auxiliary, we should take pride in knowing that the Auxiliary has helped to sustain the museum for over thirty years.

We all know that we are facing challenging economic times. After the recent round of budget cuts in the City of Phoenix, Pueblo Grande will be operating with approximately a fifty percent reduction in full-time staff. That means that the Museum will need the support of the Auxiliary more than ever in order to sustain its mission. In fact, that is what the Auxiliary is all about. Our *Articles of Incorporation* state that the purpose of the organization is “the preservation and promotion of the Pueblo Grande Museum.”

There are many ways that you can help the Auxiliary and Pueblo Grande Museum meet this challenge -

- Volunteer as a docent. With staffing cutbacks, the school groups that tour the museum will be more dependant than ever on volunteer docents to provide a high quality experience. Museum staff will no longer be available to

provide tours. Did you know that the last three docent training classes were cancelled due to lack of attendees? We simply need more docents to fill the gap.

- Volunteer in the Museum Store. Over the last year the store has been upgraded both in appearance and in the quality of merchandise offered. The store is a significant source of revenue for the Auxiliary, but it is dependant on volunteers to make it work so please consider signing up for shift. It’s a lot of fun.



Surround yourself with beautiful things - volunteer in the Museum Store.

- Volunteer at a special event. Many of you already give significant time to the Indian Market. We also have our annual Rug Auction. And with the museum staffing cutbacks, the Auxiliary will be asked to provide more support to Pueblo Grande events such as the Farmer’s Market and Ancient Technology Day.

- Support Auxiliary fundraising activities such as the Rug Auction and our Annual Campaign. Also be on the lookout for a big event in October to celebrate Pueblo Grande Museum’s 80th Anniversary.
- Renew your membership. And when it is time to renew, go out and recruit a new member. A vibrant membership is crucial to the Auxiliary’s ability to meet its mission.

I am confident that the Auxiliary will meet the challenges before us. Together we will help to sustain Pueblo Grande.

THE PGM Bookshelf

Placing History

*Book Review by April Carroll,
Associate Contract Archaeologist*

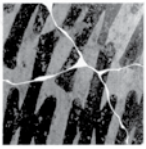
In recent years, GIS (geographical information systems) technology has found a place in an increasing number of academic fields, including history. As a result, GIS and its potential applications are being discussed more often by history scholars. **Placing History: How Maps, Spatial Data, and GIS are Changing Historical Scholarship** came about as the result of a conference on the role of GIS technology in history and is composed of a series of essays about GIS as it relates to historical research and some specific projects to which it has been applied. The book also contains numerous helpful resources, such as websites and a digital supplement with PowerPoint presentations, map animations and sample GIS projects that students can work on. Additionally, **Placing History** is a follow-up to the 2002 volume **Past Time, Past Place: GIS for History**, also by Anne Kelly Knowles.

While **Placing History** describes the application of this technology to historical scholarship, one of its strengths is that it encourages an interdisciplinary approach. Throughout the book, numerous connections between fields, such as urban studies and statistics, are made. In fact, an entire chapter of the volume is devoted to describing statistical methods that may be applied to GIS data. While statistical spatial analysis methods are mentioned in other parts

of the book, they are discussed only briefly and infrequently. This may be one of the few areas where the book might be improved.

A candid discussion of error and uncertainty makes this volume a good reference. Past critics of GIS have taken issue with its seeming objectivity and perceived temporal inflexibility. However, GIS technology has improved significantly since it was first introduced. The authors demonstrate that GIS can offer more to historical researchers than improved maps. By emphasizing a spatial frame of reference, this book compels scholars to ask questions that they might not have otherwise considered. In doing this, researchers gain additional insight into historical problems and can ask further questions, or refute or lend support to ideas.

Possible ways that the usage of GIS in historical contexts might be improved and reasons why GIS is still not prevalent in the field of history are also discussed. A number of improvements to existing software are proposed, such as better options for displaying uncertainty and improved temporal controls. More teaching of GIS in history is advocated as well as data sharing and the creation of databases that can easily be accessed. The utilization of GIS in history, as well as other fields, will only increase over the next few years. **Placing History** shows what GIS can currently do for historical scholarship and what it might do in the future. This volume (ISBN 978-1-58948-013-1) can be ordered through the Museum Store or by contacting ESRI at 1-800-447-9778 or online at www.esri.com/esripress.



PUEBLO
GRANDE
MUSEUM

**Pueblo Grande Museum
and Archaeological Park**
4619 East Washington Street
Phoenix, AZ 85034
phone: 602-495-0901
e-mail: pueblo.grande.museum.pks@phoenix.gov

THE Hohokam



What Did You Think?

...I liked your museum. I think it would be very hard to dig out all of those canals....

...Thank you for teaching us all bout archiology and the Hohokam Indians. It was very cool..

...The pithouses and platforms and adobe houses were awesome. The platform doesn't look like it use to but I can't believe its still there....

...I loved the whole thing....

...Thank you for showing us around the Indian canals and the balls courts. We had a Wonderful Time!....

...Thanks again, I will definetly come back....



City of Phoenix
PARKS AND RECREATION DEPARTMENT

DEPARTMENT MISSION STATEMENT

To enhance the quality of life by providing and maintaining the richness and diversity of a safe, accessible, and affordable Parks and Recreation system that fulfills the physical, intellectual, social, cultural, and leisure needs of people without regard to their race, ethnicity, national origin, sex, religion, age, sexual orientation, or disability.

NONDISCRIMINATION NOTICE

The City of Phoenix prohibits discrimination on the basis of race, ethnicity, national origin, sex, religion, age, sexual orientation, or disability in its services, programs, and activities. Anyone who believes he or she has been discriminated against may file a complaint with the City of Phoenix Equal Opportunity Department.

INSURANCE DISCLAIMER

The City of Phoenix does not carry accident insurance to cover participants. Involvement in any activity is done at the participant's own risk.

A.D.A. NOTICE

This publication can be provided in an alternate format upon request. Call 602-262-6862 (voice) or 602-262-6713 (TTY) • 602-534-3787 (FAX) • E-mail receptionist.PKS@phoenix.gov



Member of the Papago Salado Association



Printed on recycled paper.

