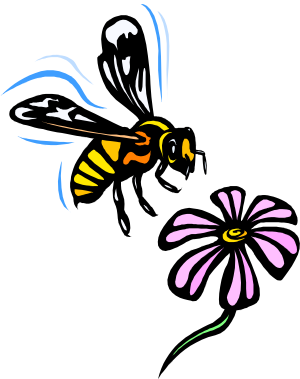




Office of Environmental Programs Pollution Prevention (P2) Tip Sheet



PEST CONTROL FOR CITY OF PHOENIX OPERATIONS *EPTSPC*



Training Information

Training Time:

- 15-30 minutes

Target Audience:

- All employees

Resources:

- Hazardous Material Management Program Manual/Pesticide Management Program
- Monica Rabb (602) 256-3447

How to Use This Training Brief

- Review/discuss the information in this document with your staff.
- Have your staff sign a roster indicating they have participated in the discussion.
- Forward the completed roster with the date of the training to Steve Carsberg, Office of Environmental Programs (OEP), P2 Section.
- Training is recorded in CHRIS.

Related Training Courses:

- Container Management (EPTSCM) Tip Sheet

Purpose: This tip sheet provides information for pest management at facilities owned by the city of Phoenix.

How Do We Control Pests?

We share the planet with critters: insects, mice, and other “pests.” City operations use a combination of methods to keep the pests at an acceptable level for our workers and those who use our facilities. To promote pollution prevention, the preference for pest control is **Integrated Pest Management, or IPM**, which employs methods to limit pests while applying a minimal amount of pesticide.

Why Can't We Just Spray?

There are several reasons:

1. **ANY EMPLOYEE WHO APPLIES PESTICIDES IN THEIR WORKPLACE MUST BE LICENSED BY THE STATE OF ARIZONA OFFICE OF PEST MANAGEMENT. UNLESS AN EMERGENCY, THERE ARE NO EXCEPTIONS!**
2. IPM is safer and smarter. Studies have shown health benefits: allergens are decreased, infestations are better controlled, and exposures to chemicals are reduced.
3. Reduced pesticide use means less stormwater pollution and hazardous waste generation.

What is IPM?

IPM is a process for achieving long-term, environmentally sound pest suppression by reducing the food, water, living space and access used by pests. Pests need food, water and living space. By taking these away, IPM minimizes the need for pesticides. Pesticides are used only when a pest problem is confirmed. When this happens, the least hazardous pesticide that is effective for control of the specific pest is carefully applied, and treatments are targeted in areas with little or no contact or access to the facility's employees, tenants, or visitors.

IPM Practices

Starve Them Out :

- Seal up boxes and bags of food. Roaches love cardboard and can climb in with ease.
- Clean up spills, crumbs and dirty dishes right away. Pests love free food!
- Keep a tight lid on trash, and empty it often.

Dry Them Out:

- Wipe water and other spilled liquids up. Puddles and standing water are pest magnets.
- Report or repair leaky faucets or other equipment.
- Empty excess water in flower pots and plants. A drop is all many pests need to survive.

Keep Them Out:

- Seal or report cracks and openings along baseboards, behind sinks, and around pipes and windows.
- Repair or report holes in doors or screens to prevent insects and other pests from entering.
- Check boxes and bags for pests before bringing the into a facility.
- Clean up clutter, including stacks paper and cardboard.
- If you see signs of a pest problem, report it to your supervisor. Don't take pest control at work into your own hands!



Resources.

- The city of Phoenix Pesticide Management Program Policy is posted at <http://inphx:8000/ENVPGM/P2/hmmp0110.html>
- More IPM information is available at <http://www.epa.gov/pesticides/factsheets/ipm.htm>
- For questions about the city's IPM contract, contact Public Works at 534-2608
- For questions about pesticide application requirements, contact the Arizona State Office of Pest Management at: <http://www.sb.state.az.us/index.php>