

The logo for PHX CONNECT NEWSLETTER is positioned at the top of the page. It features the letters 'PHX' in a stylized font with 'P' in orange, 'H' in purple, and 'X' in blue. To the right of 'PHX' is a circular icon containing a white bird-like shape. Further right, the word 'CONNECT' is written in a bold, dark blue, sans-serif font. Below 'CONNECT', the word 'NEWSLETTER' is written in a smaller, dark blue, sans-serif font. The entire logo is set against a light grey, rounded rectangular background.

PHX CONNECT

NEWSLETTER

APRIL 29, 2026

In This Issue

*April 30 Deadline:
CTI Training*

*Now Available:
Biometric Screenings*

*Share Your Photos:
"City" Families*

PHX Mental Health MATTERS

Mental Health Awareness Month

The City of Phoenix is proud to recognize May as Mental Health Awareness Month. Mental illness affects not only the individual but their family and the community. The campaign "Mental Health Matters" aims to reduce the stigma surrounding mental health issues and provide resources to support mental health and wellness. There are several ways to participate and show your support. Learn more about Mental Health Awareness at Phoenix.gov/MentalHealthMatters.

May 6 | noon

Wear Green and join us in the City Hall Atrium for a group photo

May 4-29

Visit the teen art display in the City Hall Atrium

May 14 | 10 a.m.-1 p.m.

Resource Fair
Helen Drake Senior Center
7600 N 27th Ave.

Free Webinars | noon - 1 p.m.

Register in PHXYou with **PHXyou134-ILT**:

- **May 5** (Teen Lifeline) Stress and Coping
- **May 6** (ComPsych) How Physical Pain Can Impact Your Mental Health
- **May 12** (Teen Lifeline) Suicide Prevention
- **May 13** (ComPsych) Walking for Mental Health
- **May 19** (Teen Lifeline) Self-Injury
- **May 20** (BCBS) Mental Health Conditions: depression, anxiety and suicide prevention

May 20 | 6-7:30 p.m. (Teen Lifeline) Suicide Prevention

Final Reminder: CTI Training



The **deadline** for all City of Phoenix employees to complete their **CTI Training is Thursday, April 30**. Thank you for making this training a priority and for your continued commitment to supporting our community.

Phoenix City Council recently approved the Community Transparency Initiative (CTI), strengthening the City's commitment to transparency, civil rights, and clear procedures when federal activity intersects with City facilities, services, or operations.

To ensure employees have the information they need, please take a moment to [read the special edition PHXConnect newsletter](#), which brings together key details about CTI, available resources, and the required employee training.

Learn more about CTI directives and action items, frequently asked questions, access to the City policy, and required training in PHX YOU.



Get Moving with 602 Day

Have you signed up yet for [the 602 Day Move More Step Challenge](#)? It's a great way to kick off all the fun leading up to our 602 Day celebrations. This year's step challenge runs **May 4–31**, and now is the time to find teammates and get your group registered.

Getting started is simple:

- Find your teammates (teams must be between 4-8 people)
- Pick a team name
- Have one person submit the team registration form with everyone's Wellable email usernames

FYI: Everyone who earns Wellable Points will be entered into random prize drawings just for participating.

More details about other 602 Day activities and opportunities will be in the May 6 edition of the PHXConnect Newsletter.



Wellness Screenings Made Easy

The City of Phoenix has made an investment in your health by offering a biometric screening, which can identify your risk for common chronic diseases.

Wellness Screening Includes:

- Blood Pressure
- Total Cholesterol
- HDL Cholesterol
- Total Cholesterol / HDL Ratio
- Glucose
- Body Mass Index
- Waist Circumference
- Health Counseling / Results

(You may use this biometric screening visit to complete the PCP Attestation on the Personify Health Website.)



May 13 & 20 | 8 a.m. – 1 p.m.

(Appointments + walk-ins)

Phoenix City Hall
200 W. Washington St.

May 27 & June 9 | 8 a.m. – 3 p.m.

(Appointments + walk-ins)

Calvin C. Goode Bldg
251 W Washington St.

June 3 | 8 a.m. – 3 p.m.

(Walk-ins only)

Fire Administration
150 S. 12th St.

June 2 | 8 a.m. – 3 p.m.

(Walk-ins only)

Aviation Department
2485 E. Buckeye Rd.

**[Register now for any
of these screening opportunities](#)**

15 minutes Could Save Your Life

Mobile Onsite Mammogram (MOM) is making early detection easier by bringing preventive care directly to employees. MOM will be coming to the City of Phoenix next week for on-site mammograms.

- Tuesday, May 5 | 7:30 a.m.- 5 p.m.
- Outside of Phoenix City Hall, truck parked near 2nd Ave. & Adams St.
- [Schedule now](#)



Fitness Friday at Your Desk

Ease into the weekend with a relaxing Fitness Friday class! Join Seated Yoga/Stretch live on Zoom! **Details:**

- Friday, May 8 | 10 - 10:30 a.m.
- No equipment necessary
- [Register here](#)



COMPSYCH®
— The GuidanceResources Company® —

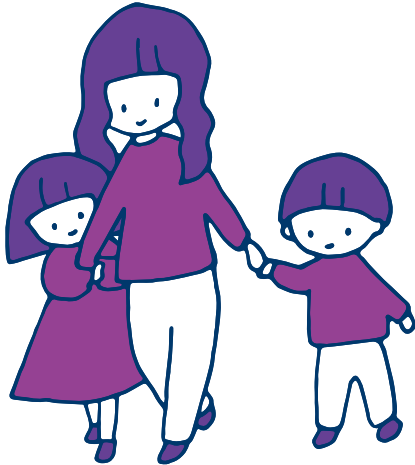
Need to Reduce Your Stress?

Join us for an upcoming Mindful Meditation Series designed to help employees reduce stress and build daily resilience.

This series provides simple, guided practices that support focus, well-being, and a healthier workday. It's just 15-minutes every Wednesday, **starting May 13.**

[Register today!](#)

Calling All City of Phoenix Moms



Mother's Day is right around the corner (May 10), and we want to celebrate the amazing moms who make our organization stronger every day. If you're a mother and have a child who also works for the City, please email PHXConnect@Phoenix.gov:

- A photo of you and your child(ren) who work for the City
- Your names
- Your departments
- How long each of you has worked here

We'll showcase as many entries as we can—thank you for helping us highlight the families who serve Phoenix together!

Experience the Sensory Room

In celebration of Autism Acceptance Month, DEAL invites you to experience the temporary sensory room created for employees.

Details:

- Arts and Culture Department, City Hall 10th Floor
- Open to all employees through the end of May
- Please help keep the space fragrance-free
- Bring your own headphones, if needed



Thank you to the Parks and Recreation department for providing sensory equipment and the Arts and Culture department for hosting the space. For questions, please reach out to Latoya at latoya.cunningham@phoenix.gov.

Employee Leave Request

The following employees are accepting leave donations. If you would like to help, use eCHRIS.

- Luis Cueto | Street & Transportation
- Henry Herrera | Water Services
- Monique Olivas | Police
- William Owens | Water Services

Complete list of eligible employees: [Leave Donation website](#).

Featured Job of the Week

Caseworker II Office of Homeless Solutions

(Close Date May 5, 2026)

The City of Phoenix Office of Homeless Solutions is seeking creative, data-driven, solution-oriented professionals to help make a meaningful impact within the homeless services system as a Caseworker II. The Office of Homeless Solutions (OHS) provides support for people experiencing homelessness and is committed to ending homelessness through a comprehensive, regional approach to shelter and heat relief, outreach, supportive and behavioral health services, homelessness prevention, and supportive housing.

The Office of Homeless Solutions engages in outreach to individuals, unaccompanied youth, families, and veterans. This position works with organizations, neighborhoods, and police, responding to the needs of homeless individuals and families. They provide outreach and meet clients where they are in the community.

A Caseworker II develops and implements casework plans and strategies designed to meet client needs/goals in attaining economic self-sufficiency, and social/emotional well-being. Client needs relate to areas such as housing, finances, education, employment, health, and substance abuse.

SALARY DETAILS:

Pay Range: \$23.74-\$42.64/HR

Hiring Range: \$23.74-\$35.08 /HR

Pay Range Explanation:

- Pay range is the entire compensation range for the position classification.
- Hiring range is an estimate of where you can receive an offer. The actual salary offer will carefully consider a wide range of factors, including your skills, qualifications, experience, education, licenses, training, and internal equity.

Learn about role responsibilities and more information at phoenix.gov/jobs or log into eCHRIS

did you know?

The City of Phoenix offers an Employee Development Fund (EDF) Program for employees to further their education, attend job-related seminars/workshops, and obtain job-related licenses or certifications. The Employee Development Fund is for all employees in a full-time benefit-eligible position except Middle Managers and Executives (the Management Development Fund is governed by Administrative Regulation 2.281 through the Finance Department). Job Share employees are eligible to use up to 50% of the EDF maximum.

For more information, click [here](#).

OUTFIT OPPORTUNITY

PHOENIX.GOV/HELPING

DONATE GENTLY USED
PROFESSIONAL WEAR TO OUR
NEW COMMUNITY CLOSET.



PHX

 **CONNECT**
NEWSLETTER

[f](#) [▶](#) [X](#) [📷](#) [📍](#) [in](#)

Join the Conversation