

Streets PHX

STREET TRANSPORTATION DEPARTMENT

Annual Collision Trends

When Do Collisions Occur

Where Do Collisions Occur

How Do Collisions Occur

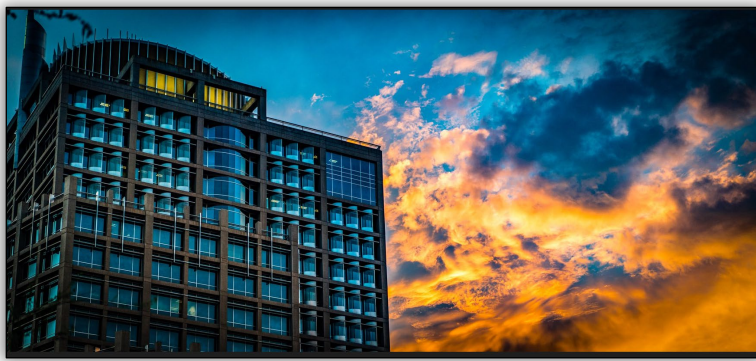
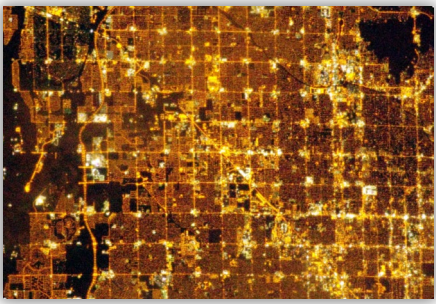
Motorcyclist Collisions

Pedestrian Collisions

Bicycle Collisions

These icons have been designed using images from Shutterstock.com

2024 City of Phoenix Traffic Collision Summary



2024 City of Phoenix Quick Collision Facts:

Annual Collision Trends



When Do Collisions Occur



Where Do Collisions Occur



How Do Collisions Occur



Motorcyclist Collisions



Pedestrian Collisions



Bicycle Collisions



Preface:

The raw data used for this report was obtained from the Arizona Department of Transportation and processed utilizing a custom application, coded by Y2K Engineering for the City of Phoenix - Street Transportation Department. The data included in this year's report may vary from trends and statistics that have been presented in prior years. For more information on the modifications made to the selection criteria used to complete this report, please make a request to the [Office of Roadway Safety](#).

It must be noted that data following the COVID-19 epidemic years may have altered trends due to the unusual societal factors affecting typical roadway user behavior.

Collision Total

23,676

Pedestrian Collisions

806

Bicycle Collisions

304

Total Injuries

8,849

Total Fatalities

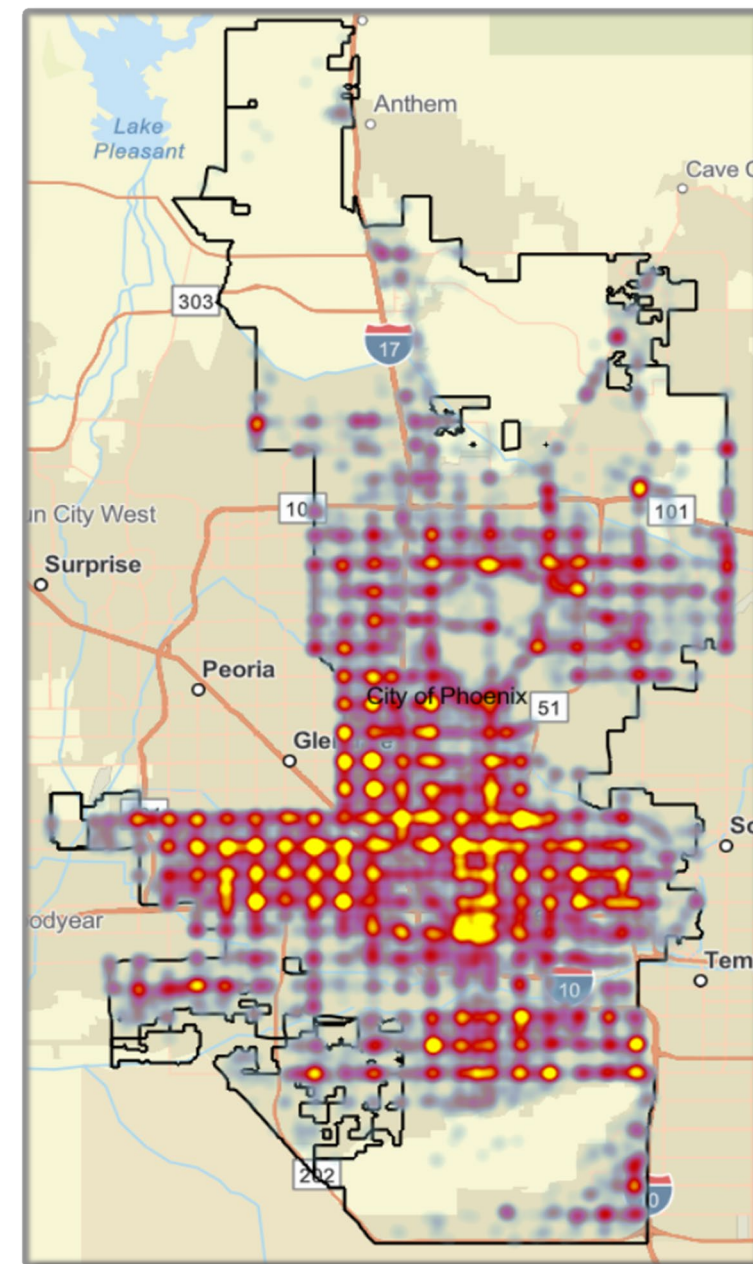
224

Total Hit and Runs

3,765

Total Work-Zone Related

131



Total Collisions

23,676

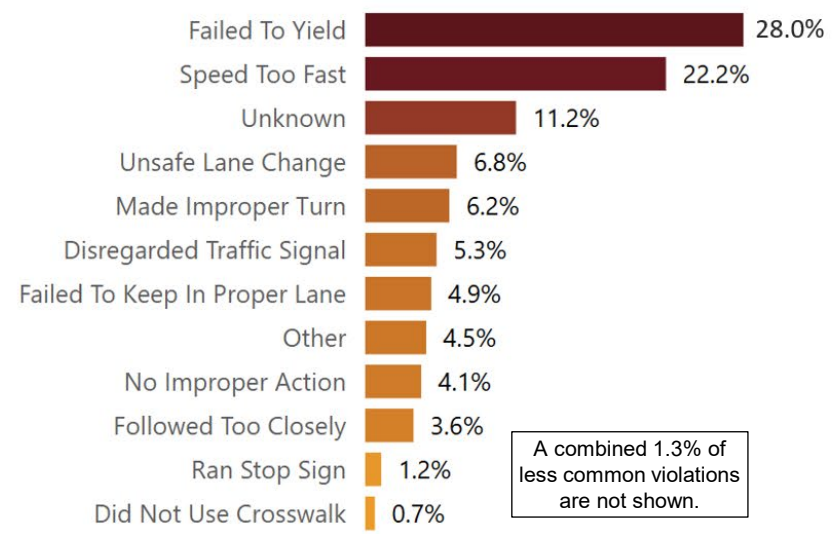


2024 Phoenix Traffic Collision Summary

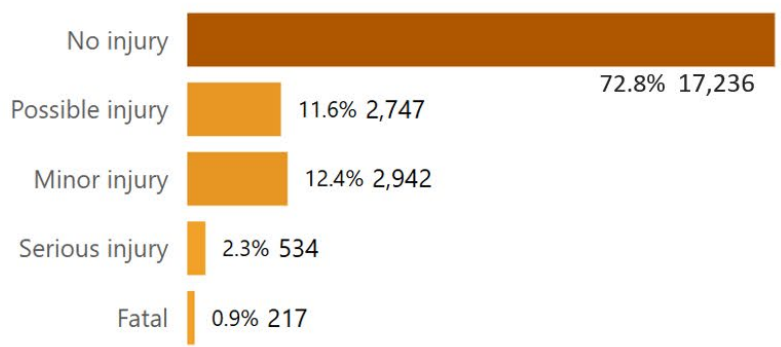


2024 City of Phoenix Quick Collision Facts:

Unit 1 Top Violations



Collisions by Injury Severity



Speed Related



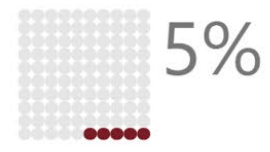
Hit and Run



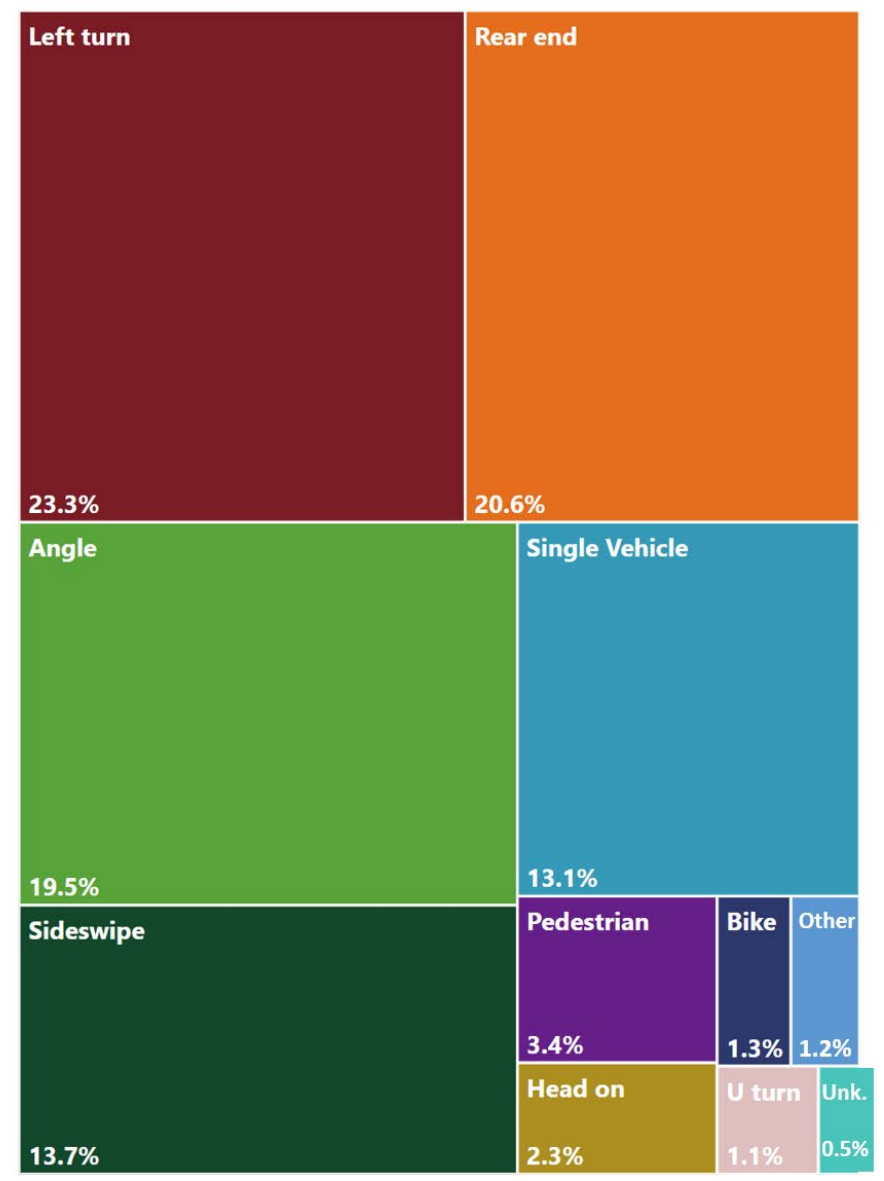
Driver 1 Impaired



Bike or Pedestrian



Collision Manner



Total Collisions
23,676

Streets PHX

STREET TRANSPORTATION DEPARTMENT

Annual Collision Trends

When Do Collisions Occur

Where Do Collisions Occur

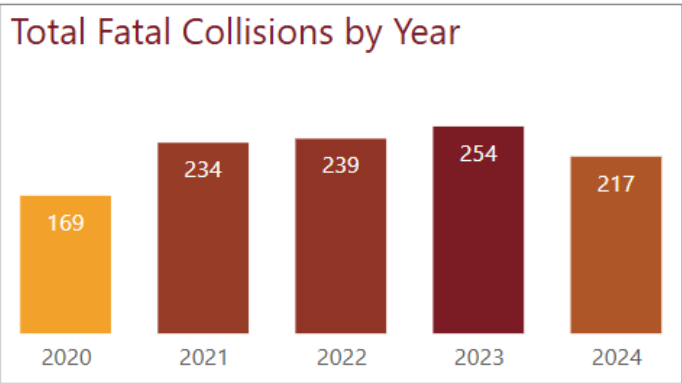
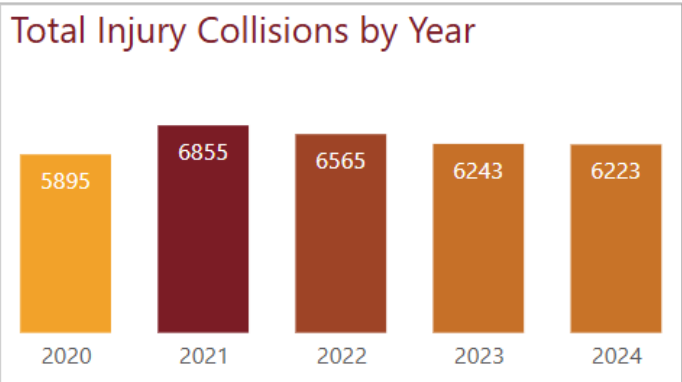
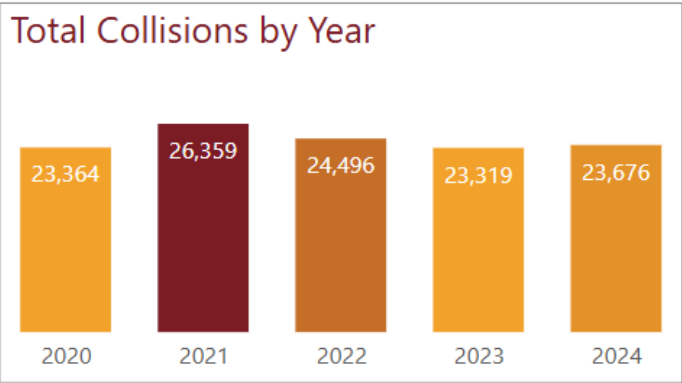
How Do Collisions Occur

Motorcyclist Collisions

Pedestrian Collisions

Bicycle Collisions

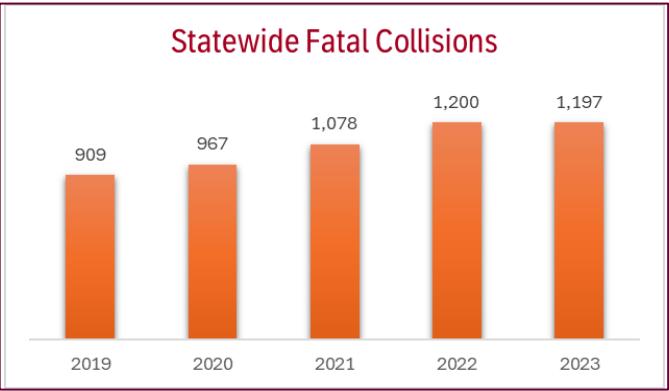
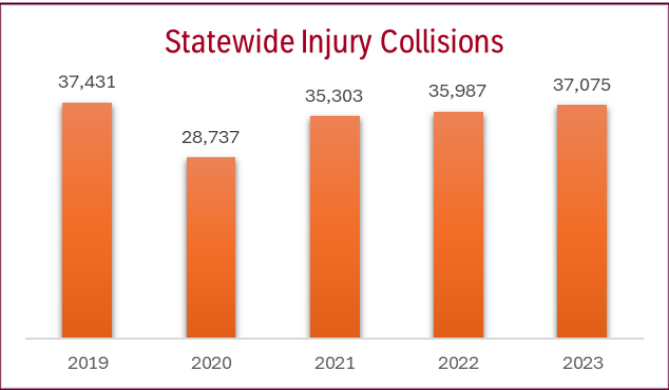
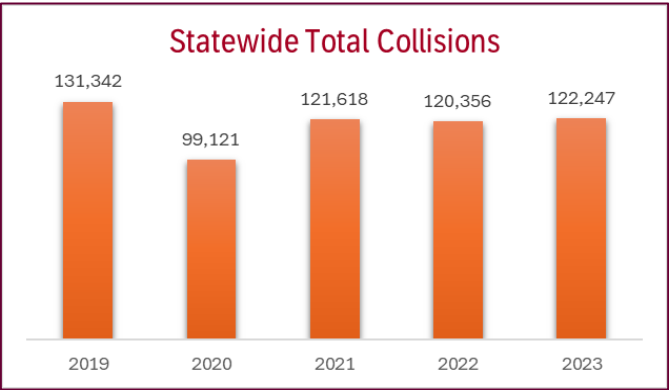
Annual Collision Trends



Total Collisions
23,676

Arizona Crash Facts

Note: Arizona data comes from the [2023 Arizona Crash Facts Summary \(ADOT\)](#)



When Do Collisions Occur?

Annual Collision Trends



When Do Collisions Occur



Where Do Collisions Occur



How Do Collisions Occur



Motorcyclist Collisions



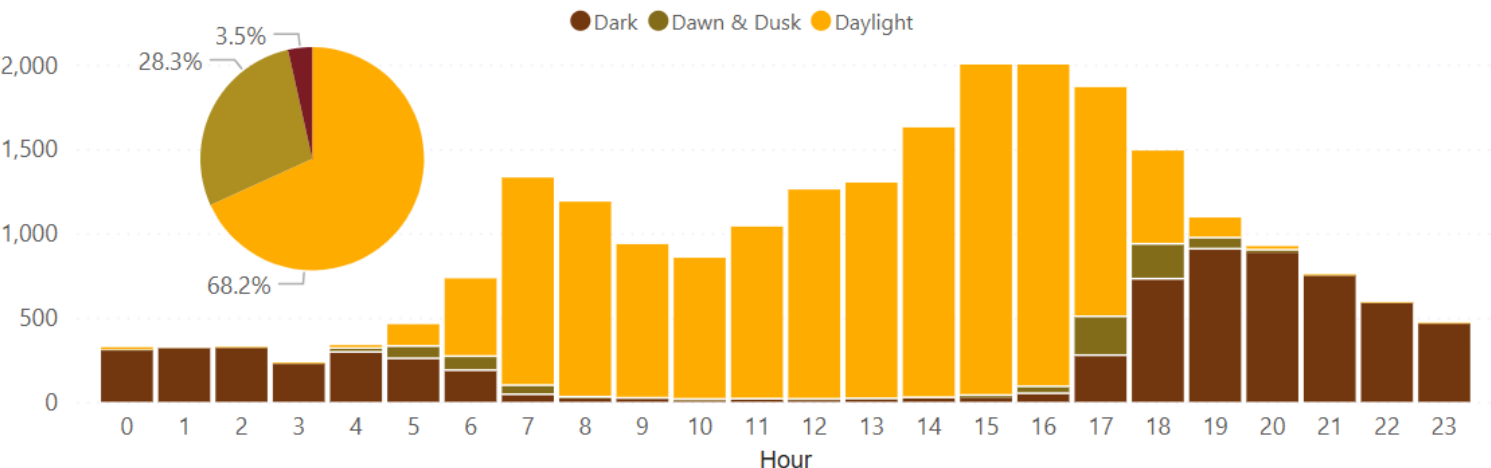
Pedestrian Collisions



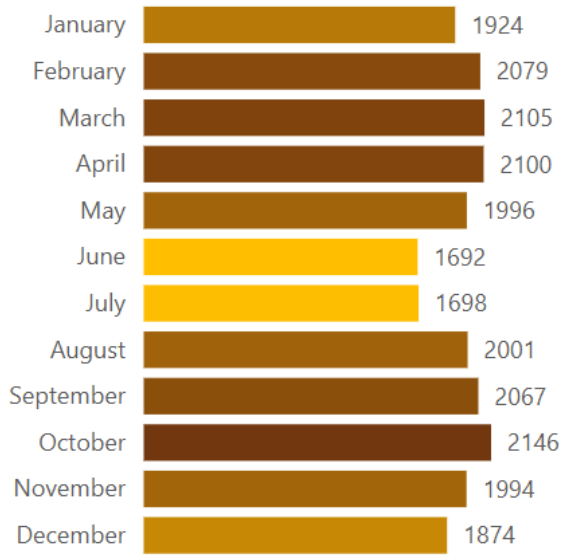
Bicycle Collisions



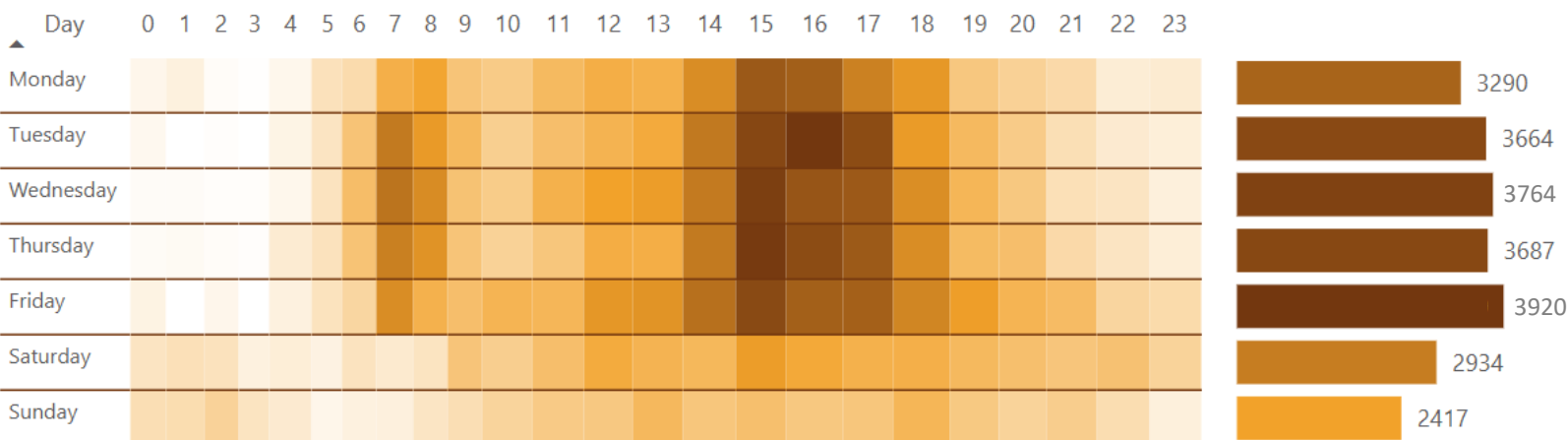
Collisions by Time of Day and Light Condition



Collisions by Month



Collision Frequency by Hour and Day of the Week



Glare Sunlight
233

Total Collisions
23,676

When Do Fatal Collisions Occur?

Annual Collision Trends



When Do Collisions Occur



Where Do Collisions Occur



How Do Collisions Occur



Motorcyclist Collisions



Pedestrian Collisions

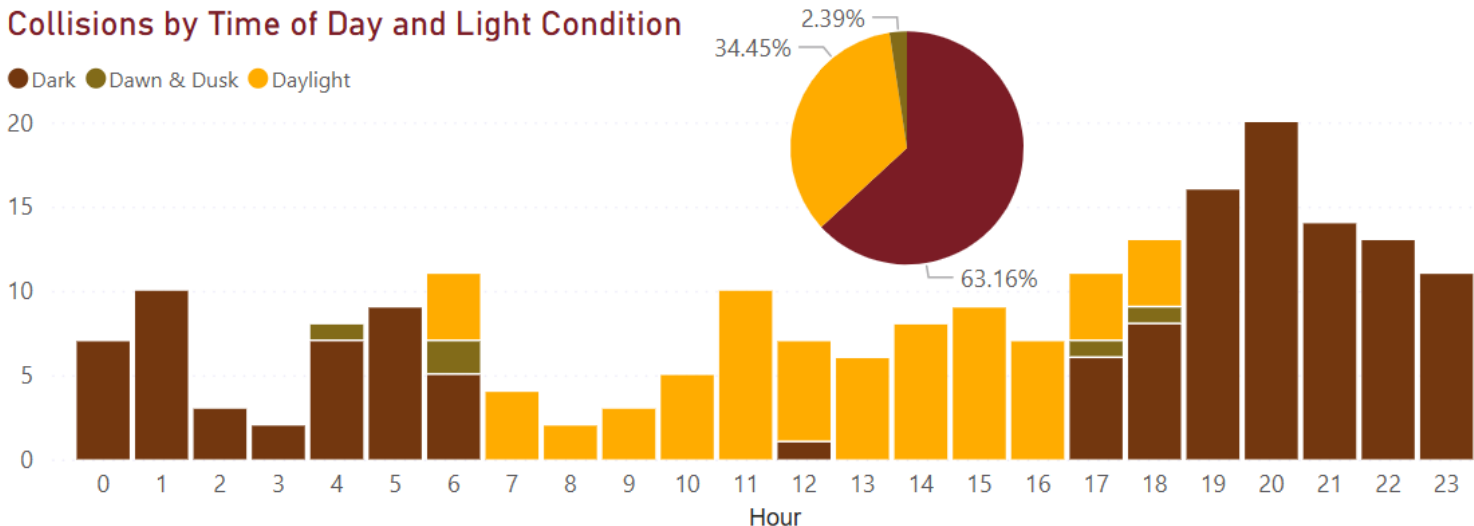


Bicycle Collisions

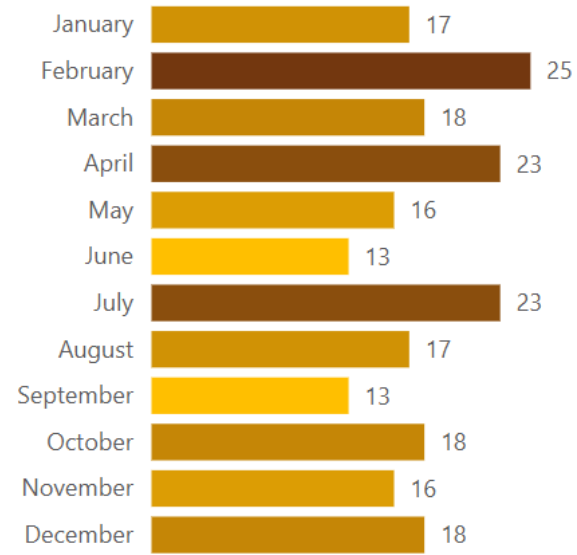


Collisions by Time of Day and Light Condition

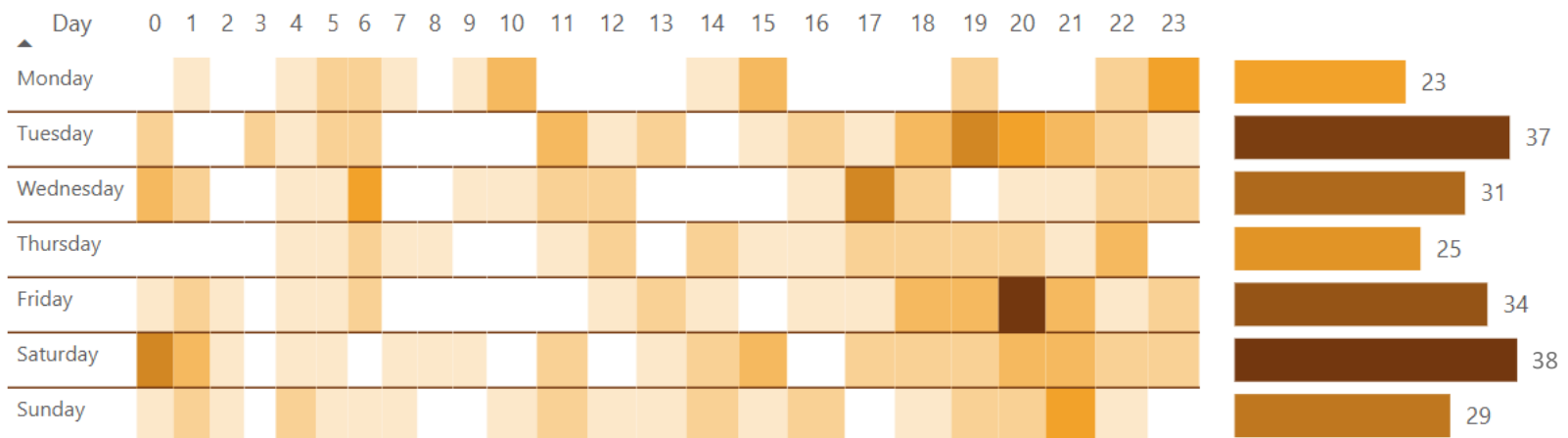
Dark Dawn & Dusk Daylight



Collisions by Month



Collision Frequency by Hour and Day of the Week



Glare Sunlight

1

Fatal Collisions
217

Streets PHX

STREET TRANSPORTATION DEPARTMENT

Annual Collision Trends

When Do Collisions Occur

Where Do Collisions Occur

How Do Collisions Occur

Motorcyclist Collisions

Pedestrian Collisions

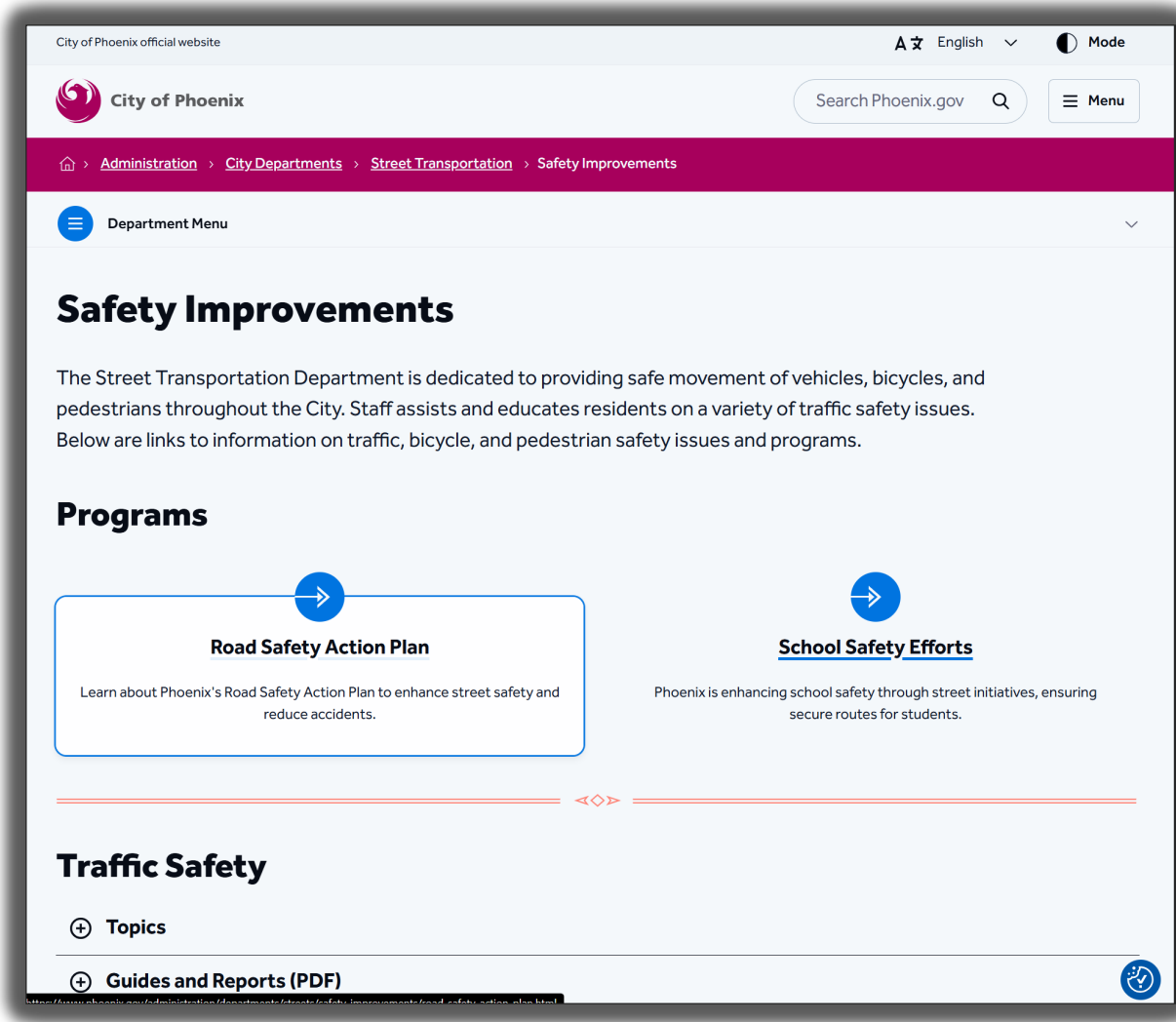
Bicycle Collisions

Click on Links for More Information

Traffic Safety Resources

The Street Transportation Department is dedicated to providing safe movement of vehicles, bicycles, and pedestrians throughout the City. Below are links to information on roadway safety issues and programs:

- [Roadway Safety Home Page](#)
- [Roadway Safety Action Plan \(RSAP\)](#)
- [School Safety Efforts](#)
- [Complete Streets Program](#)
- [Pedestrian Safety Activity Book \(English\)](#)



Annual Collision Trends



When Do Collisions Occur



Where Do Collisions Occur



How Do Collisions Occur



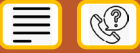
Motorcyclist Collisions



Pedestrian Collisions

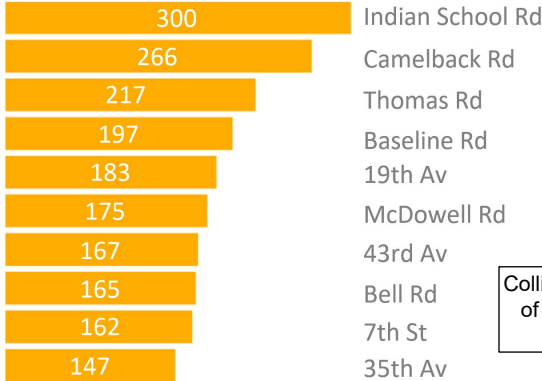


Bicycle Collisions



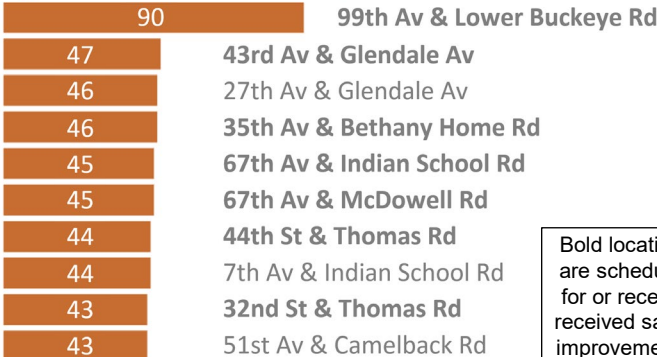
Where Do Collisions Occur?

Segment Crashes (by On Road)



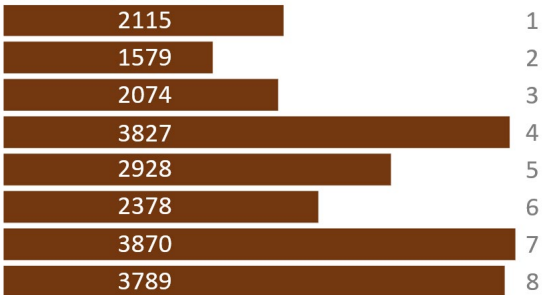
Collisions within 150' of an intersection are excluded

High Crash Intersections (150 feet)



Bold locations are scheduled for or recently received safety improvements.

Crashes by Council District



1,116 incidents occurred outside Phoenix Council district borders.

Total Collisions
23,676

Arterial Crash

Yes

81.3%

No

18.7%

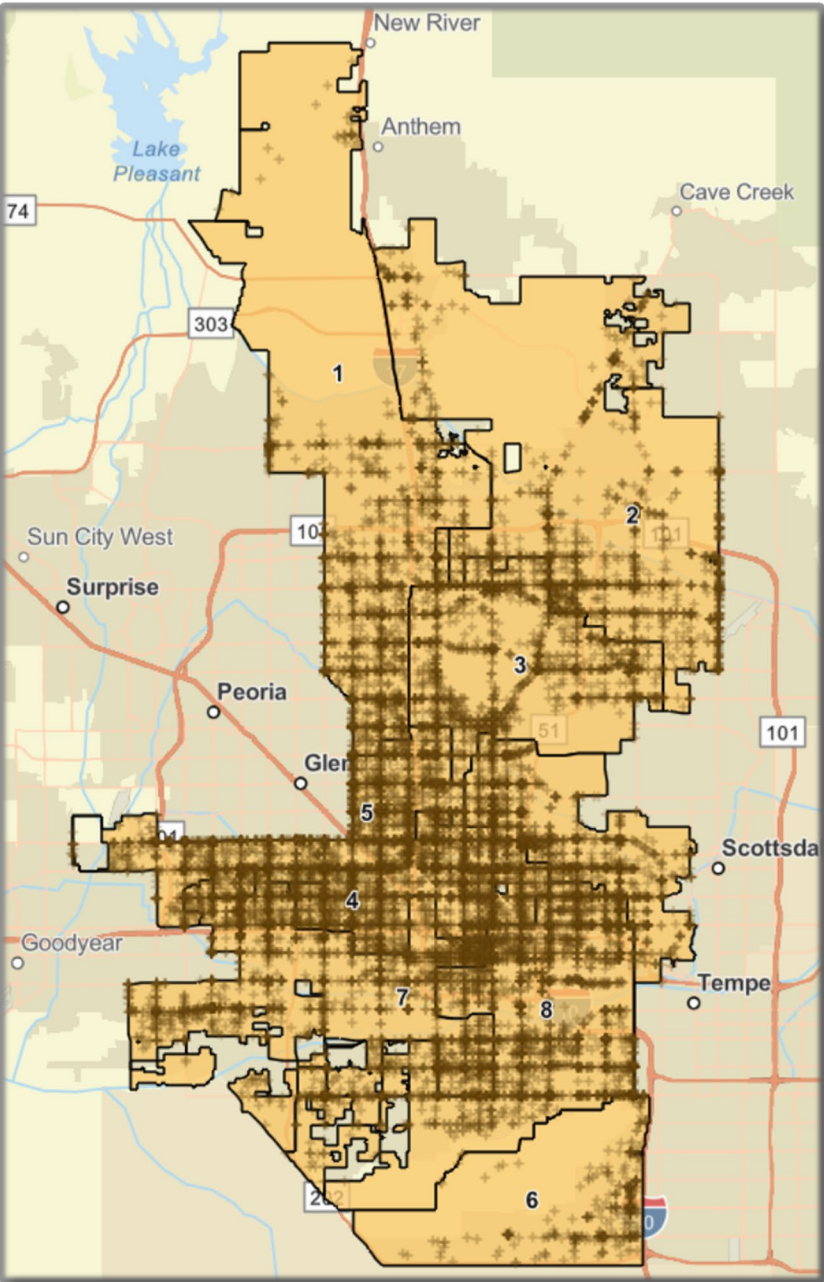
Traffic Signal Device Presence

Yes

51.0%

No

49.0%



Where Do Fatal Collisions Occur?

Annual Collision Trends



When Do Collisions Occur



Where Do Collisions Occur



How Do Collisions Occur



Motorcyclist Collisions



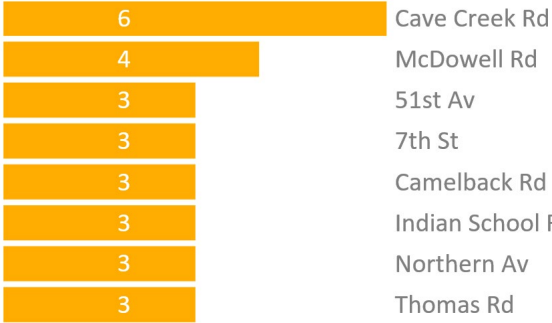
Pedestrian Collisions



Bicycle Collisions



Segment Crashes (by On Road)



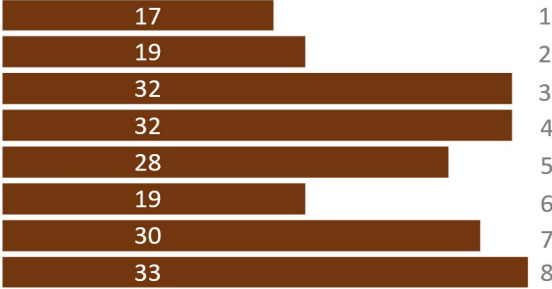
Collisions within 150' of an intersection are excluded

High Crash Intersections (150 feet)



Bold locations are scheduled for or recently received safety improvements.

Crashes by Council District



7 incidents occurred outside Phoenix Council district borders.

Fatal Collisions

217

Arterial Crash

Yes

86.6%

No

13.4%

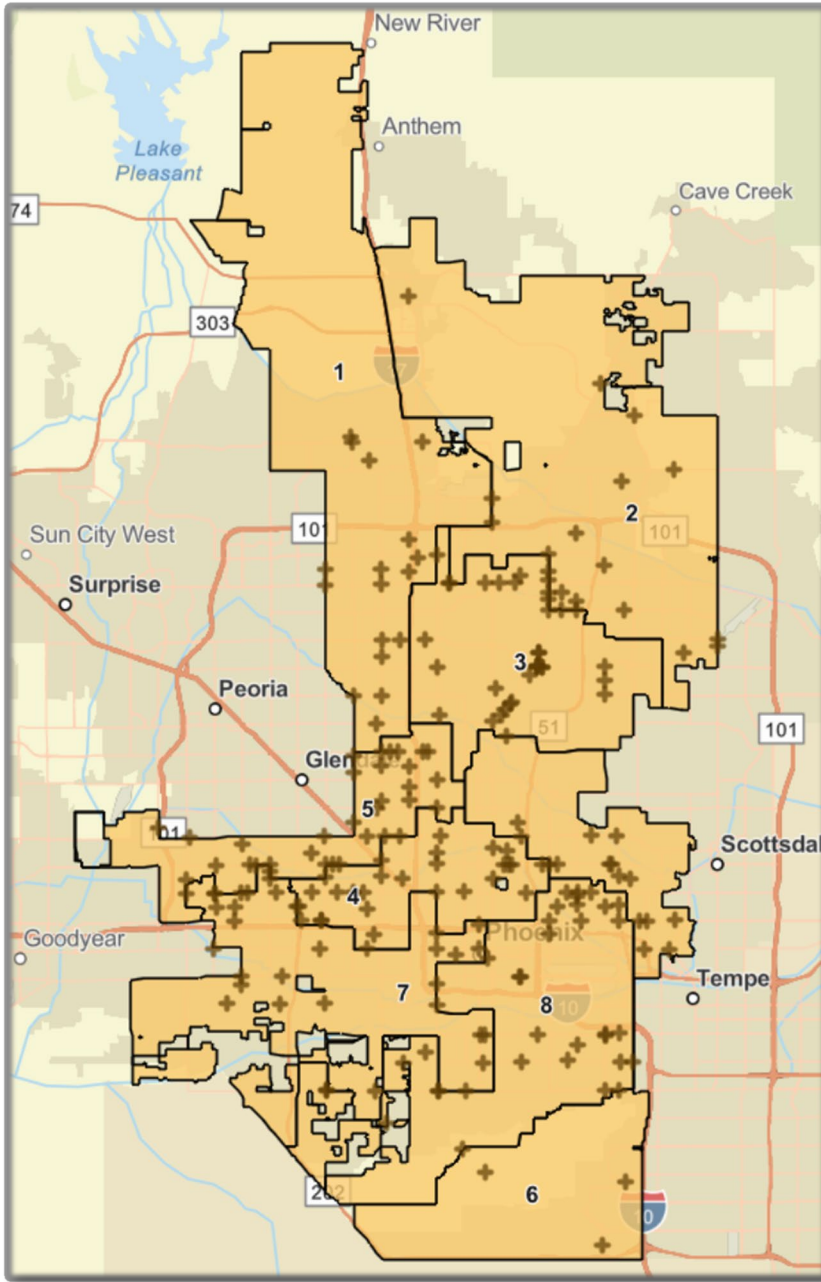
Traffic Signal Device Presence

No

50.0%

Yes

50.0%



Locations with the Highest Number of Intersection Collisions

Annual Collision Trends



When Do Collisions Occur



Where Do Collisions Occur



How Do Collisions Occur



Motorcyclist Collisions



Pedestrian Collisions

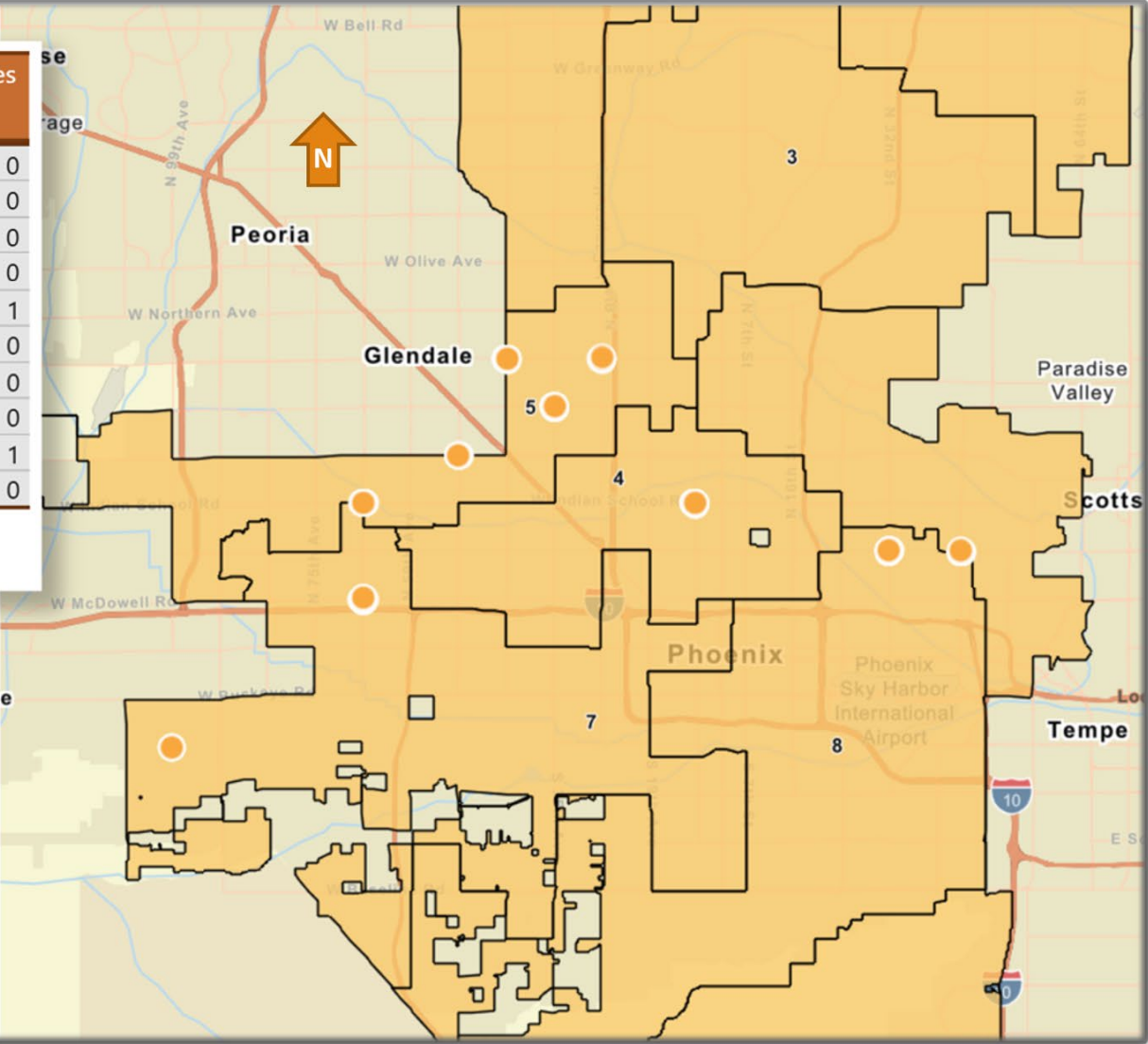


Bicycle Collisions



GIS.Intersection_Name	Incident Count	TotalInjuries	TotalFatalities
S 99TH AVE & W LOWER BUCKEYE RD	90	8	0
N 43RD AVE & W GLENDALE AVE	47	17	0
N 27TH AVE & W GLENDALE AVE	46	25	0
W BETHANY HOME RD & N 35TH AVE	46	20	0
N 67TH AVE & W INDIAN SCHOOL RD	45	23	1
N 67TH AVE & W MCDOWELL RD	45	17	0
E THOMAS RD & N 44TH ST	44	17	0
W INDIAN SCHOOL RD & N 7TH AVE	44	22	0
N 32ND ST & E THOMAS RD	43	8	1
W CAMELBACK RD & N 51ST AVE	43	20	0

Only collisions within 150' of an intersection are included.



How Do Collisions Occur?

Annual Collision Trends



When Do Collisions Occur



Where Do Collisions Occur



How Do Collisions Occur



Motorcyclist Collisions



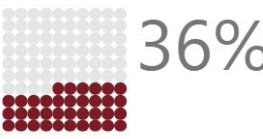
Pedestrian Collisions



Bicycle Collisions



Driver Distracted



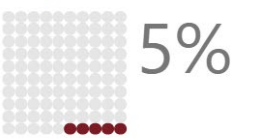
Speed Related



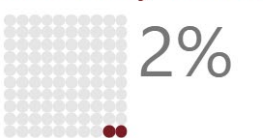
Hit and Run



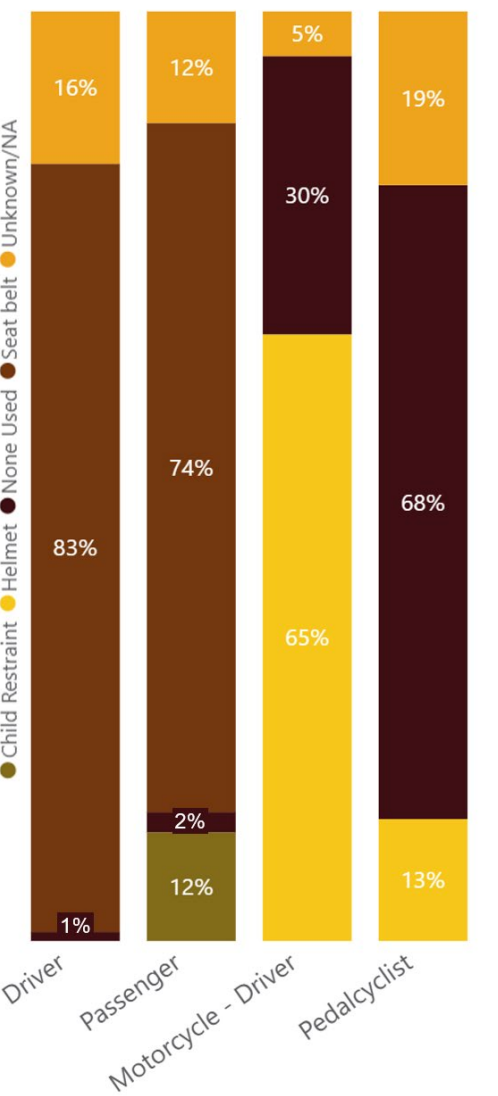
Impairment



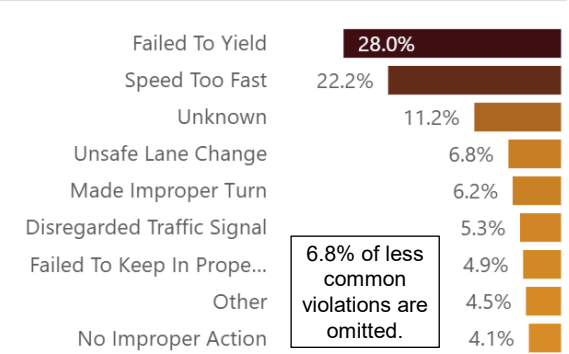
No Safety Device



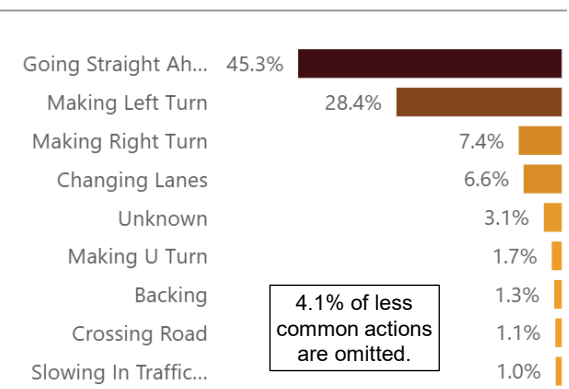
Safety Device Use by Person Type



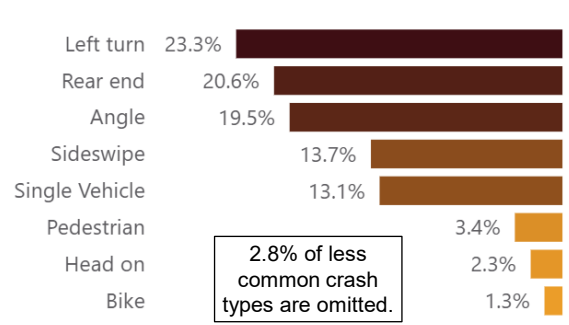
Unit 1 Violation



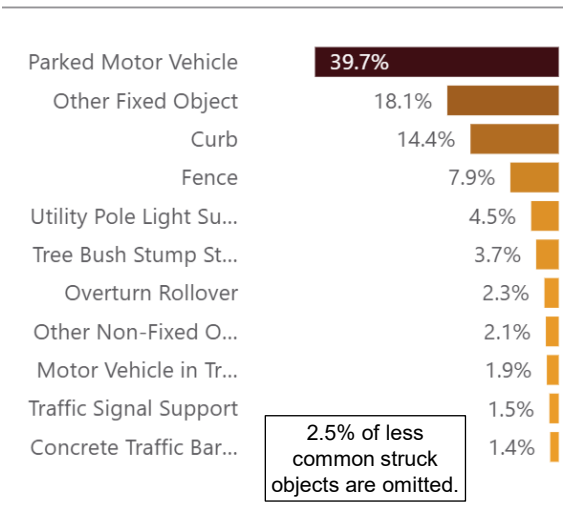
Unit 1 Action



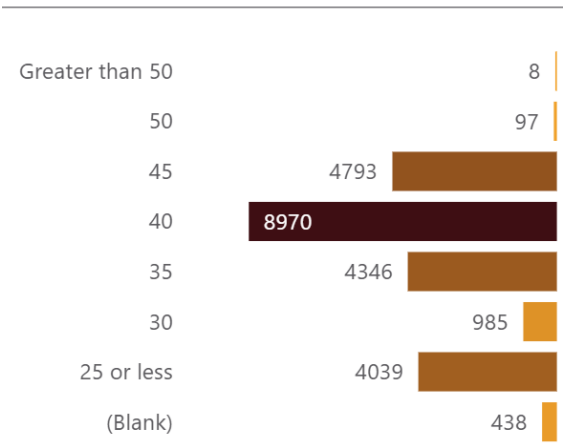
Collision Manner



First Harmful Event (Single Vehicle)



Posted Speed Limit (On Road)



Total Collisions
23,676

How Do Fatal Collisions Occur?

Annual Collision Trends



When Do Collisions Occur



Where Do Collisions Occur



How Do Collisions Occur



Motorcyclist Collisions



Pedestrian Collisions



Bicycle Collisions



Driver Distracted



Speed Related



Hit and Run



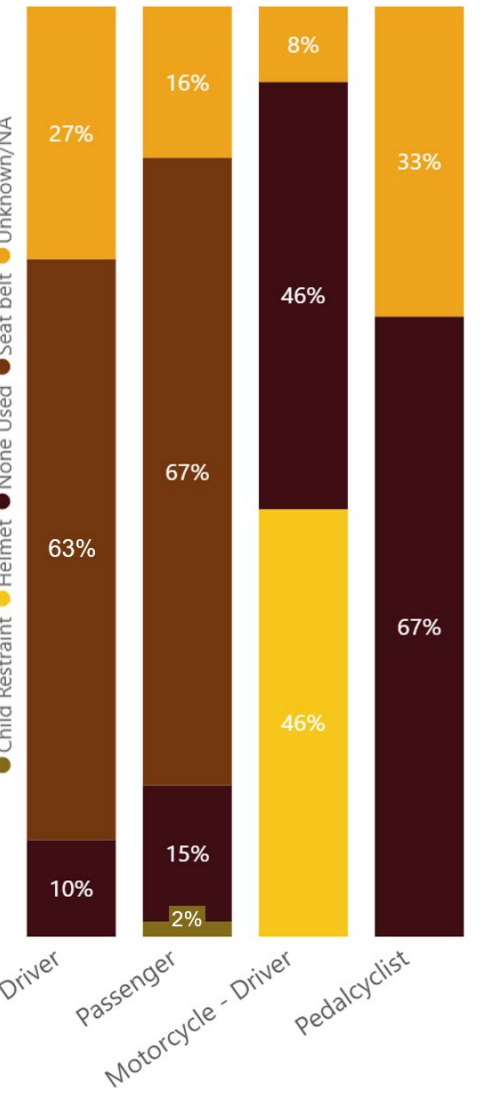
Impairment



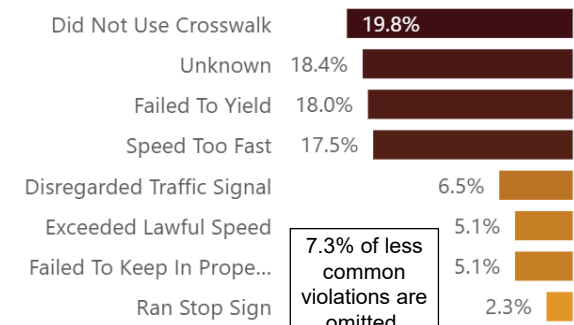
No Safety Device



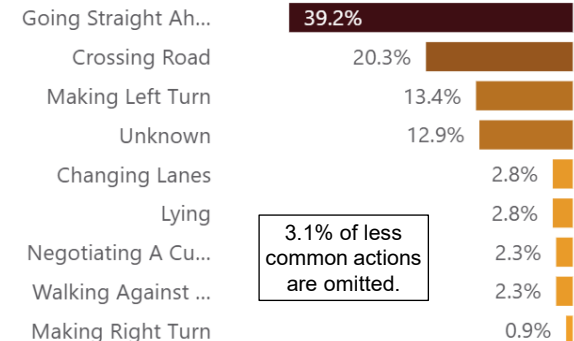
Safety Device Use by Person Type



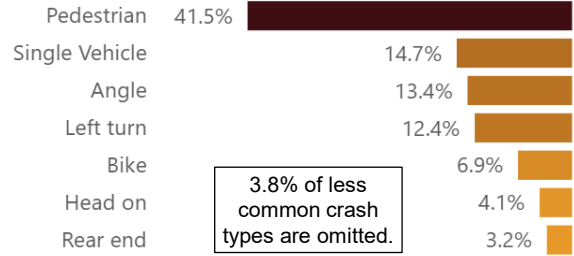
Unit 1 Violation



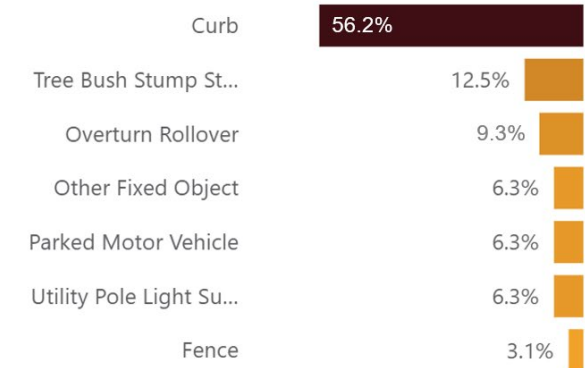
Unit 1 Action



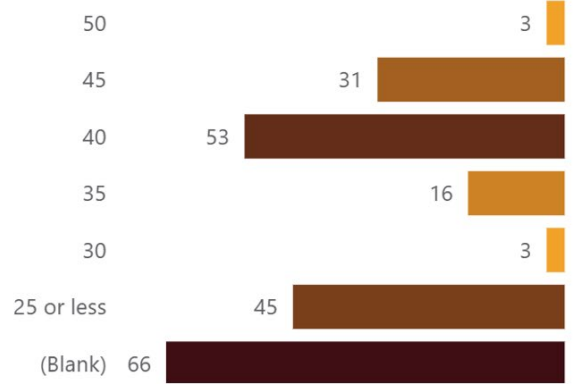
Collision Manner



First Harmful Event (Single Vehicle)



Posted Speed Limit (On Road)



Fatal Collisions

217



How Do Collisions Occur and to Who?

Annual Collision Trends



When Do Collisions Occur



Where Do Collisions Occur



How Do Collisions Occur



Motorcyclist Collisions



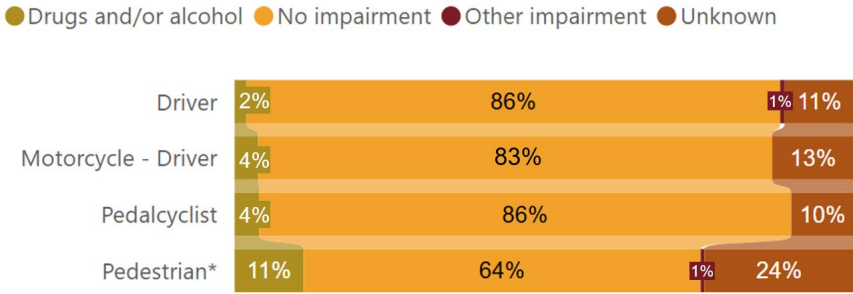
Pedestrian Collisions



Bicycle Collisions



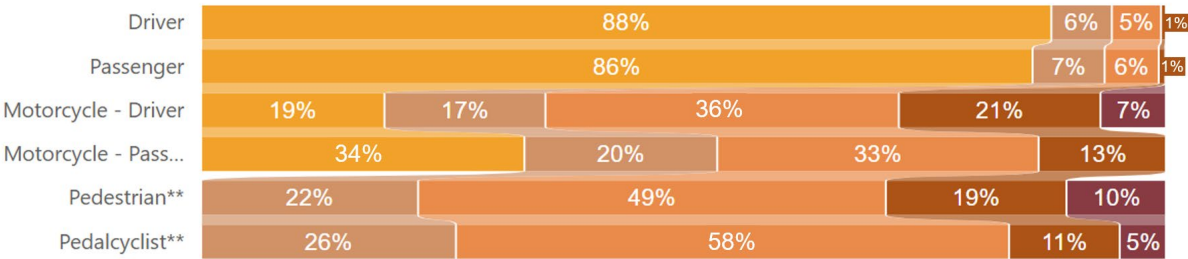
Impairment by Person Type



*Note: it is not a violation to walk under the influence.

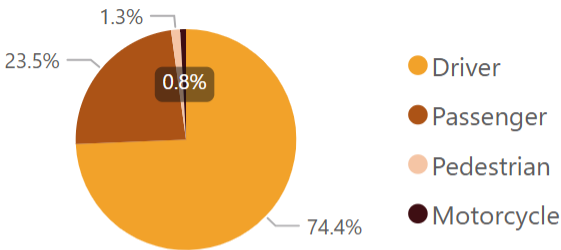
Person Types Involved in Crashes by Injury Status

Injury Status ● No injury ● Possible injury ● Minor injury ● Serious injury ● Fatal

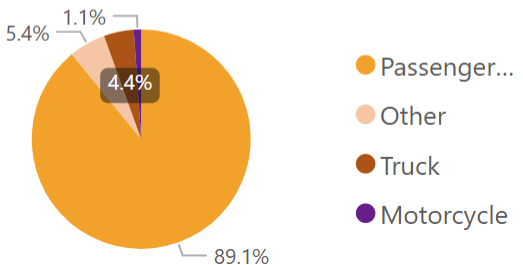


**Note: Crashes involving pedestrian and bicyclist with less severe injuries may be under-reported.

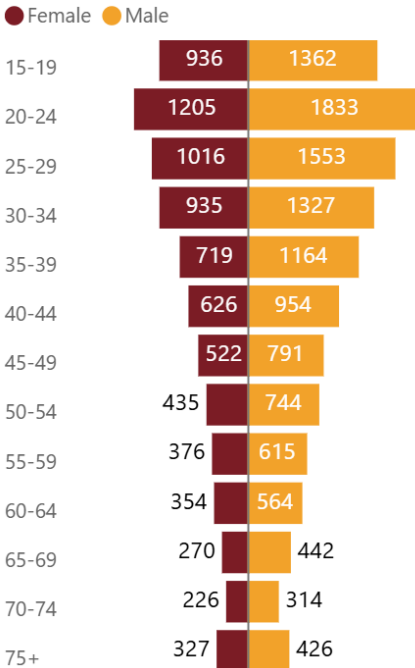
Person Type



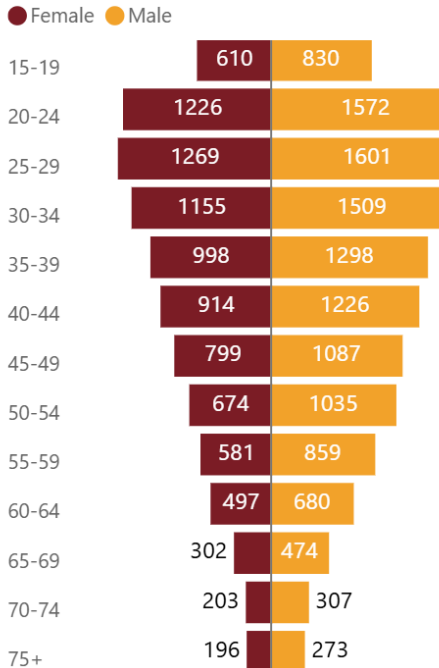
Vehicle Body Style



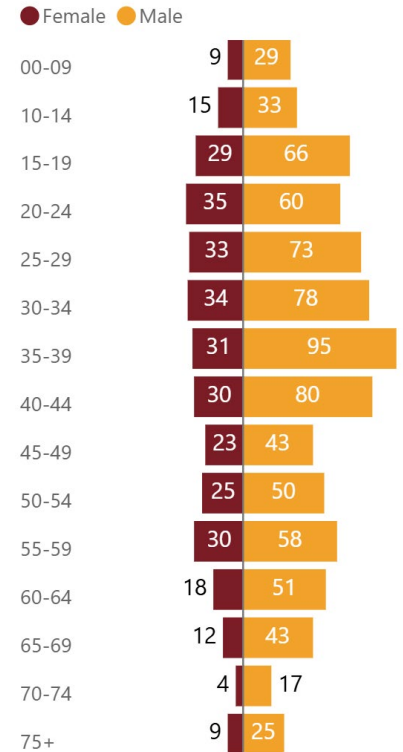
Drivers of Unit 1 by Age and Gender



Drivers of Unit 2-6 by Age and Gender



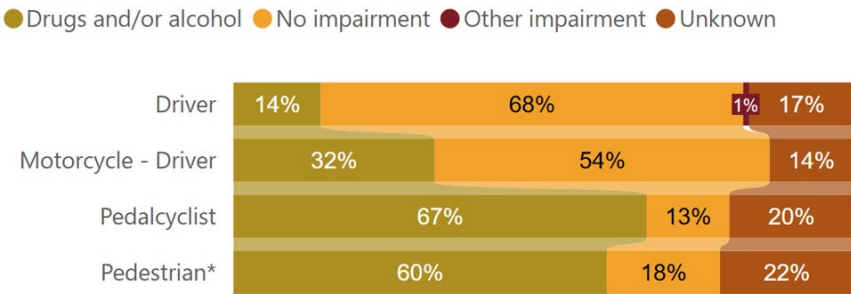
Ped and Bike by Age and Gender



Total Collisions
23,676

How Do Fatal Collisions Occur and to Who?

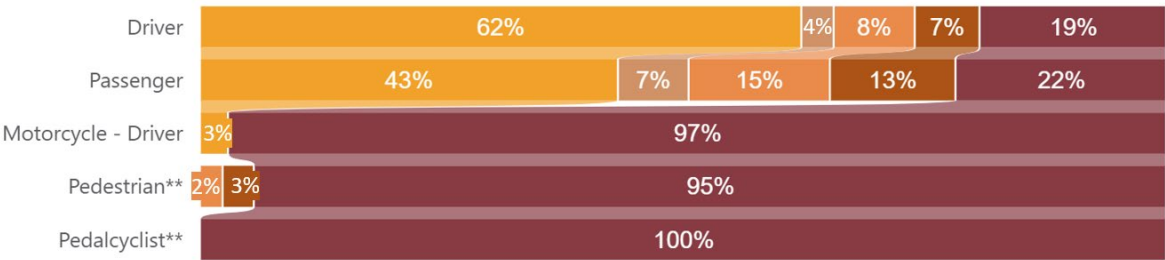
Impairment by Person Type



*Note: it is not a violation to walk under the influence.

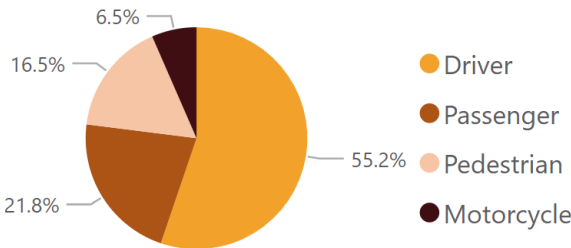
Person Types Involved in Fatal Crashes by Injury Status

Injury Status ● No injury ● Possible injury ● Minor injury ● Serious injury ● Fatal

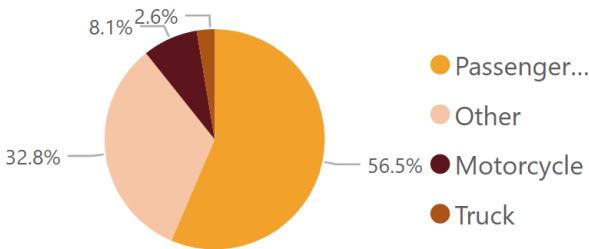


**Note: Crashes involving pedestrian and bicyclist with less severe injuries may be under-reported.

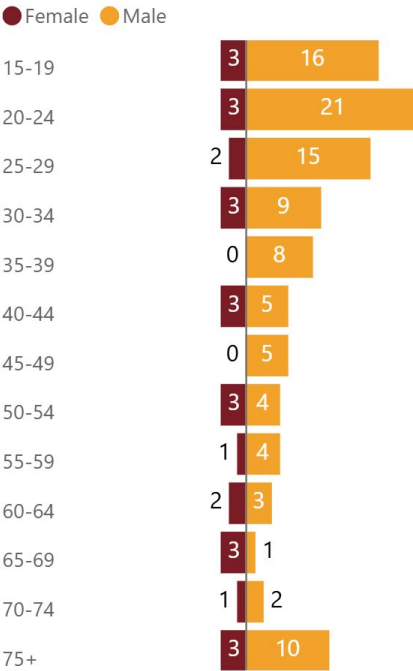
Person Type



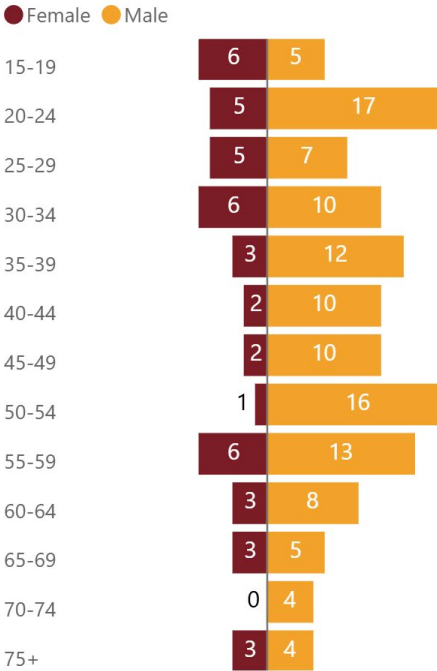
Vehicle Body Style



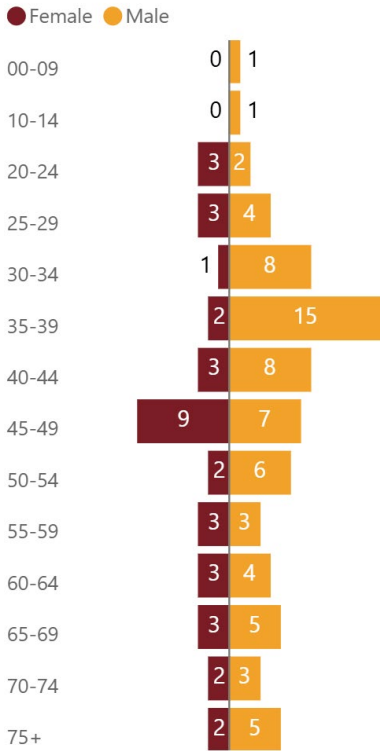
Drivers of Unit 1 by Age and Gender



Drivers of Unit 2-6 by Age and Gender



Ped and Bike by Age and Gender



Annual Collision Trends



When Do Collisions Occur



Where Do Collisions Occur



How Do Collisions Occur



Motorcyclist Collisions



Pedestrian Collisions



Bicycle Collisions



Fatal Collisions

217

Community Engagement

Annual Collision Trends



When Do Collisions Occur



Where Do Collisions Occur



How Do Collisions Occur



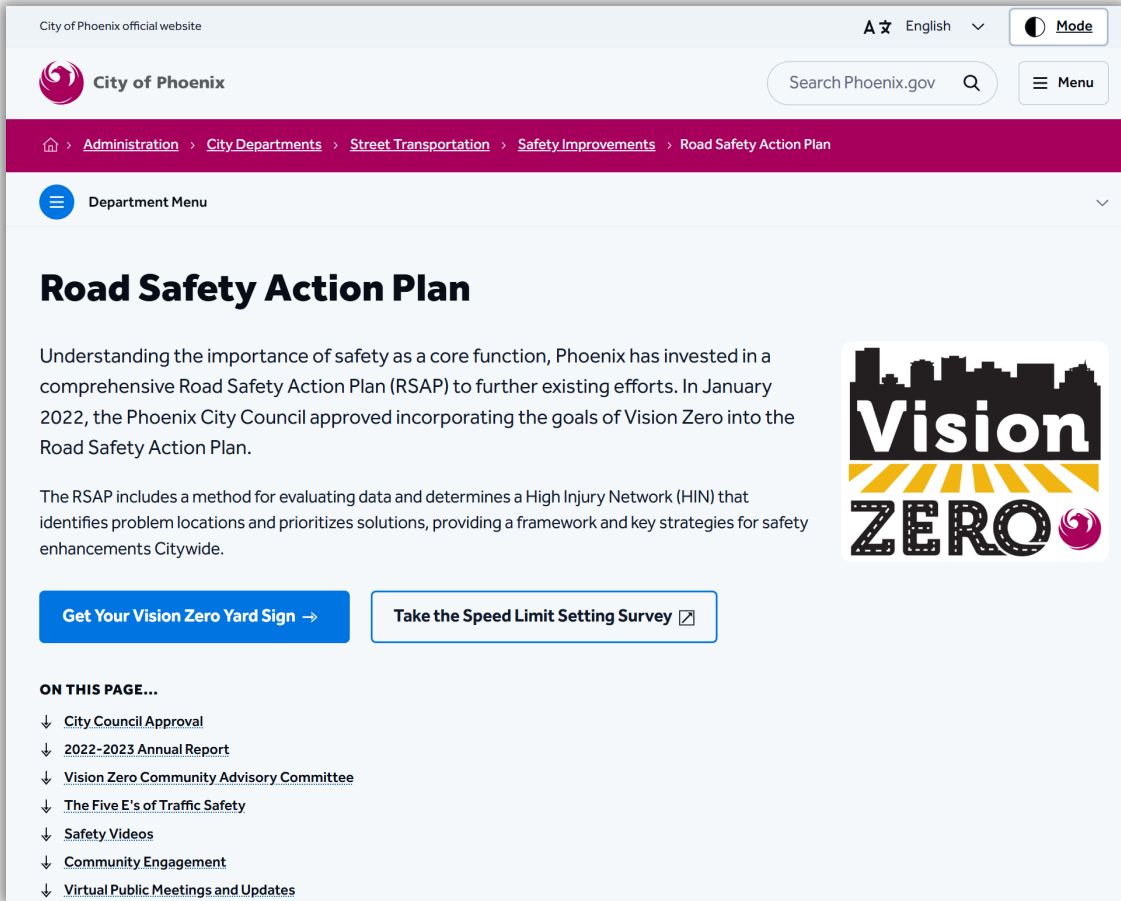
Motorcyclist Collisions



Pedestrian Collisions



Bicycle Collisions



Community engagement is integral to the formation of an actionable plan. The input of those who travel Phoenix's roadways, whether driving, walking or biking, is key to making streets safer for everyone.

Road Safety Action Plan Resources

[Roadway Safety Action Plan \(RSAP\)](#)

[Phoenix High Injury Network \(HIN\)](#)

[Road Safety Action Plan FAQ](#)

[Phase 1 - Public Involvement Summary Report](#)

[Phase 2 - Public Involvement Summary Report](#)

Click on Links for
More Information



2024 Phoenix Traffic Collision Summary



Streets PHX

STREET TRANSPORTATION DEPARTMENT

Annual Collision Trends

When Do Collisions Occur

Where Do Collisions Occur

How Do Collisions Occur

Motorcyclist Collisions

Pedestrian Collisions

Bicycle Collisions

Motorcyclist Collisions

Motorcycle Collisions

515

Total Collisions by Injury Severity

Year	No injury	Possible injury	Minor injury	Serious injury	Fatal
2020	132	112	177	82	33
2021	86	109	186	100	39
2022	103	89	222	120	41
2023	99	92	190	135	55
2024	93	87	189	110	36

No injury
Possible injury
Minor injury
Serious injury
Fatal

Traffic Control

Traffic Control	Percentage
No Controls	62%
Signal	30%
Stop Sign	8%

Crashes by Light Condition

Light Condition	Percentage
Daylight	61%
Dark	36%
Dawn & Dusk	3%

High Crash Intersections

67Th Av and Indian School Rd	4
99Th Av and Camelback Rd	4
Cave Creek Rd and Union Hills ...	4

Motorcyclist Impairment

No impairment	84%
Unknown	13%
Alcohol alone	2%
Drugs alone	1%

Speeding

33%

Impairment - Driver 1

5%

Total Injuries

395

Total Fatalities

36

Total Hit and Runs

60

←

2024 Phoenix Traffic Collision Summary

→

16

Pedestrian Collisions

Annual Collision Trends



When Do Collisions Occur



Where Do Collisions Occur



How Do Collisions Occur



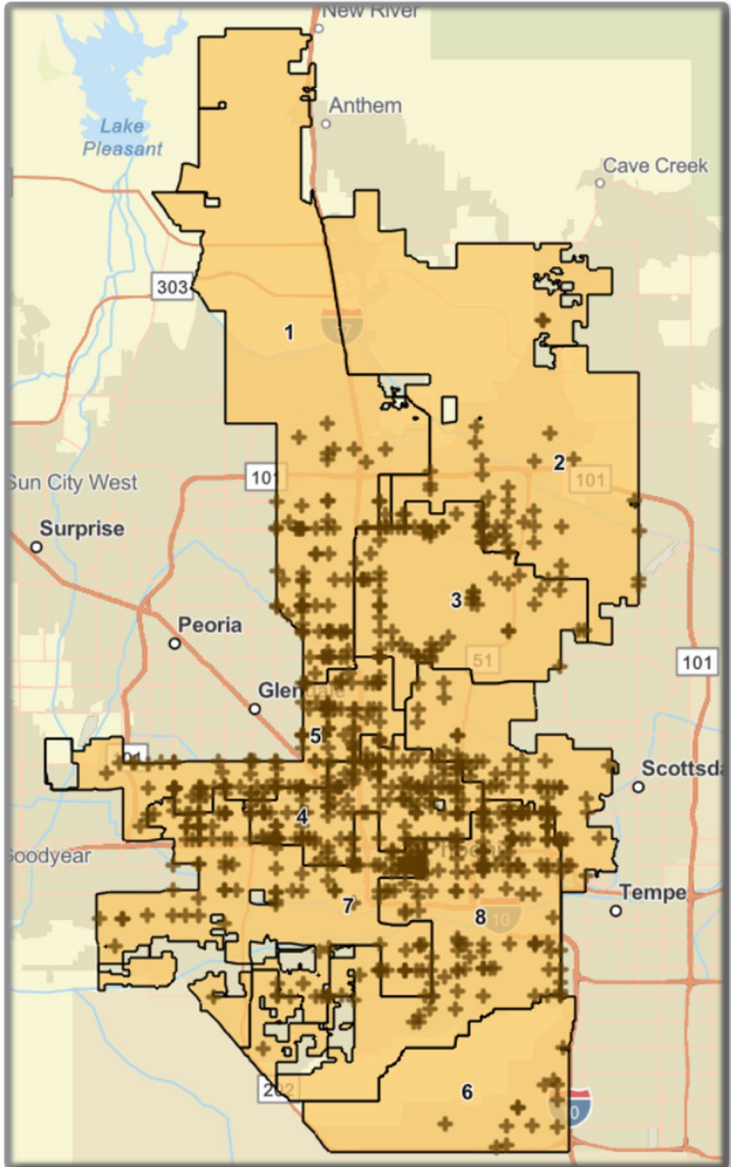
Motorcyclist Collisions



Pedestrian Collisions

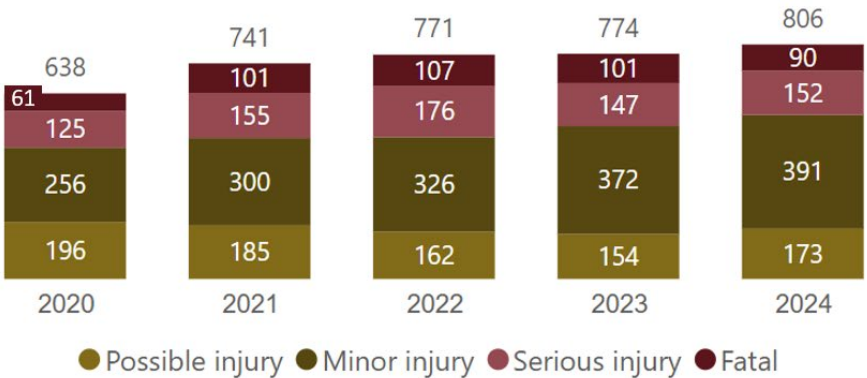


Bicycle Collisions

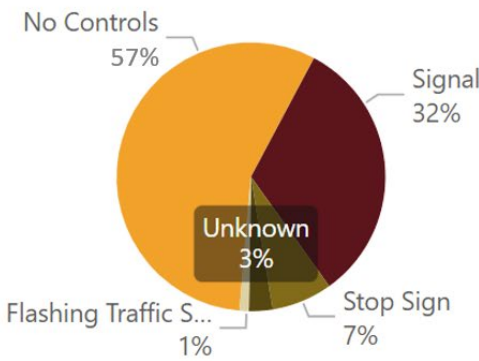


Pedestrian Collisions
806

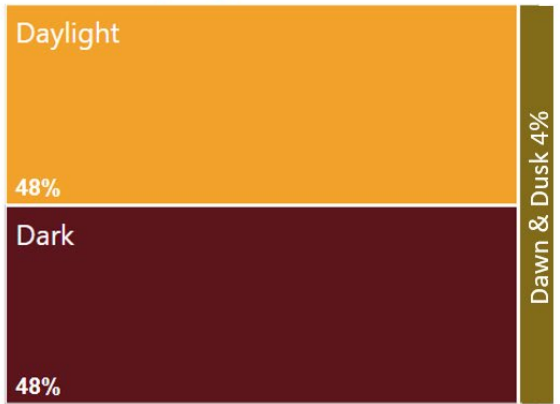
Total Collisions by Injury Severity



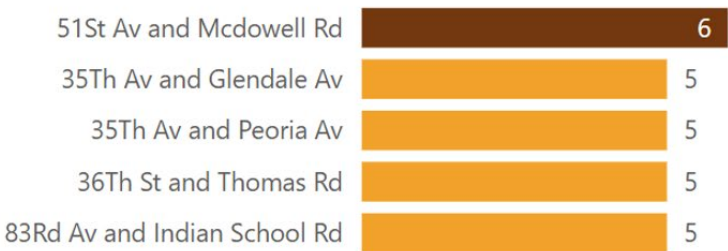
Traffic Control



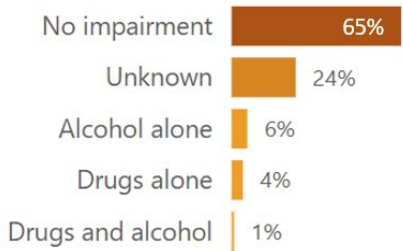
Crashes by Light Condition



High Crash Intersections



Pedestrian Impairment



Speeding



Impairment - Driver 1



Total Injuries

755

Total Fatalities

90

Total Hit and Runs

209

18

Streets PHX

STREET TRANSPORTATION DEPARTMENT

Annual Collision Trends

When Do Collisions Occur

Where Do Collisions Occur

How Do Collisions Occur

Motorcyclist Collisions

Pedestrian Collisions

Bicycle Collisions

These icons have been placed on this page from Streets PHX

HAWK Pedestrian Signals Activated in 2024

- 20th St and Broadway Rd
- 1804 W Glendale Av
- Dayton St and Thomas Rd
- 13th Av and Osborn Rd
- 68th St and Thunderbird Rd
- 40th St and Danbury Rd
- 16th St and Virginia Av
- 17th Av and Peoria Av
- 16th St and Diamond St

The Hawk Signal at 16th St and Diamond St was Activated in November



Total Hawk Signals
96 (thru 2024)



Bicycle Collisions

Annual Collision Trends



When Do Collisions Occur



Where Do Collisions Occur



How Do Collisions Occur



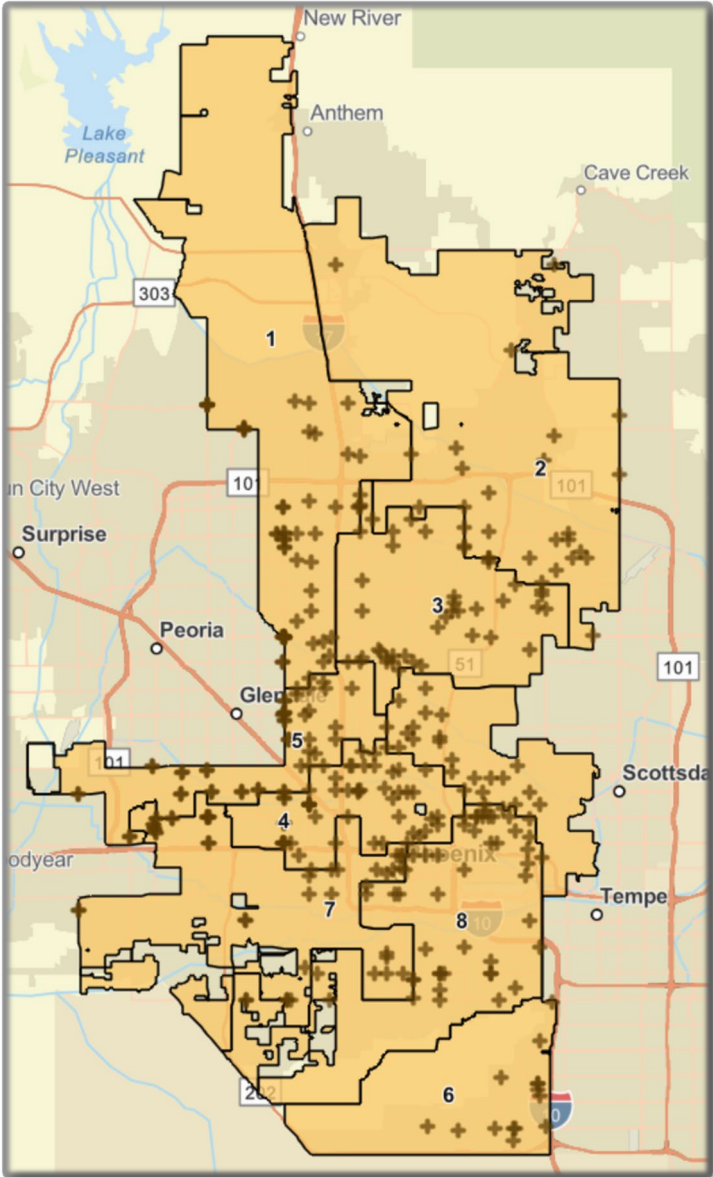
Motorcyclist Collisions



Pedestrian Collisions

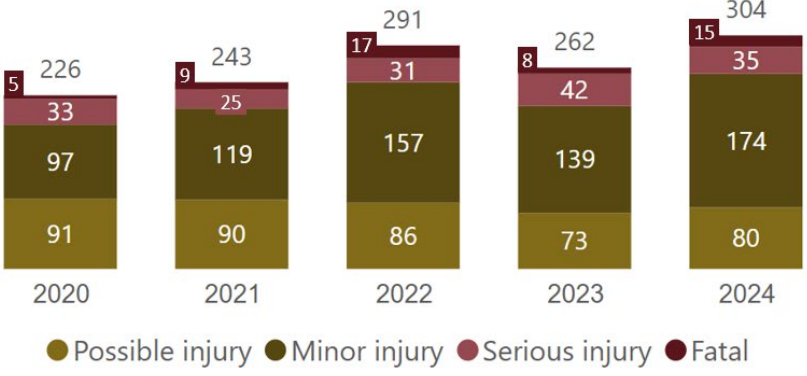


Bicycle Collisions

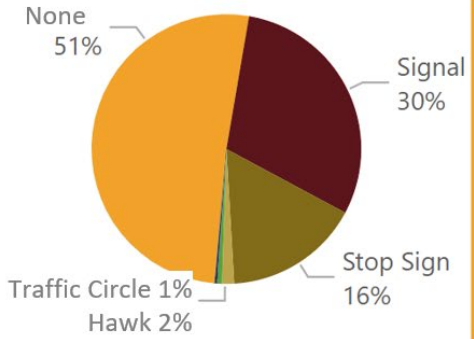


Bicyclist Collisions
304

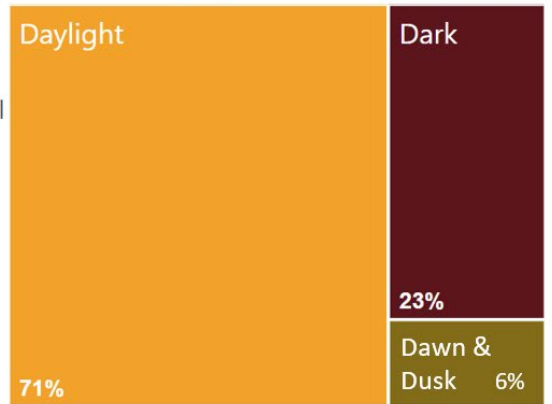
Total Collisions by Injury Severity



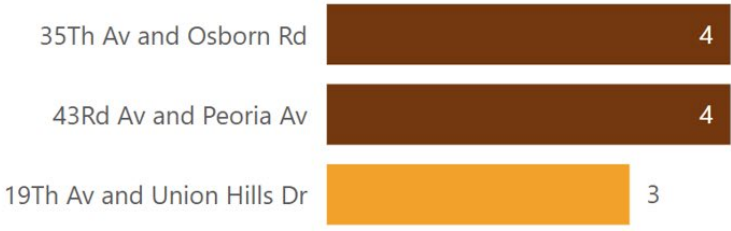
Traffic Control



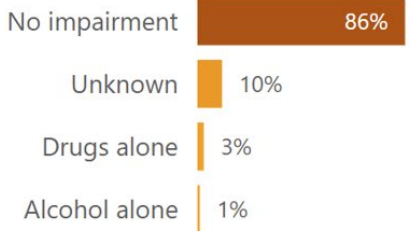
Crashes by Light Condition



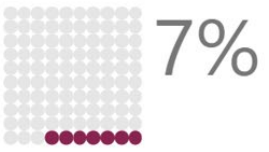
High Crash Intersections



Bicyclist Impairment



Speeding



Impairment - Driver 1



Total Injuries

290

Total Fatalities

15

Total Hit and Runs

57

Streets PHX
STREET TRANSPORTATION DEPARTMENT

Annual Collision Trends

When Do Collisions Occur

Where Do Collisions Occur

How Do Collisions Occur

Motorcyclist Collisions

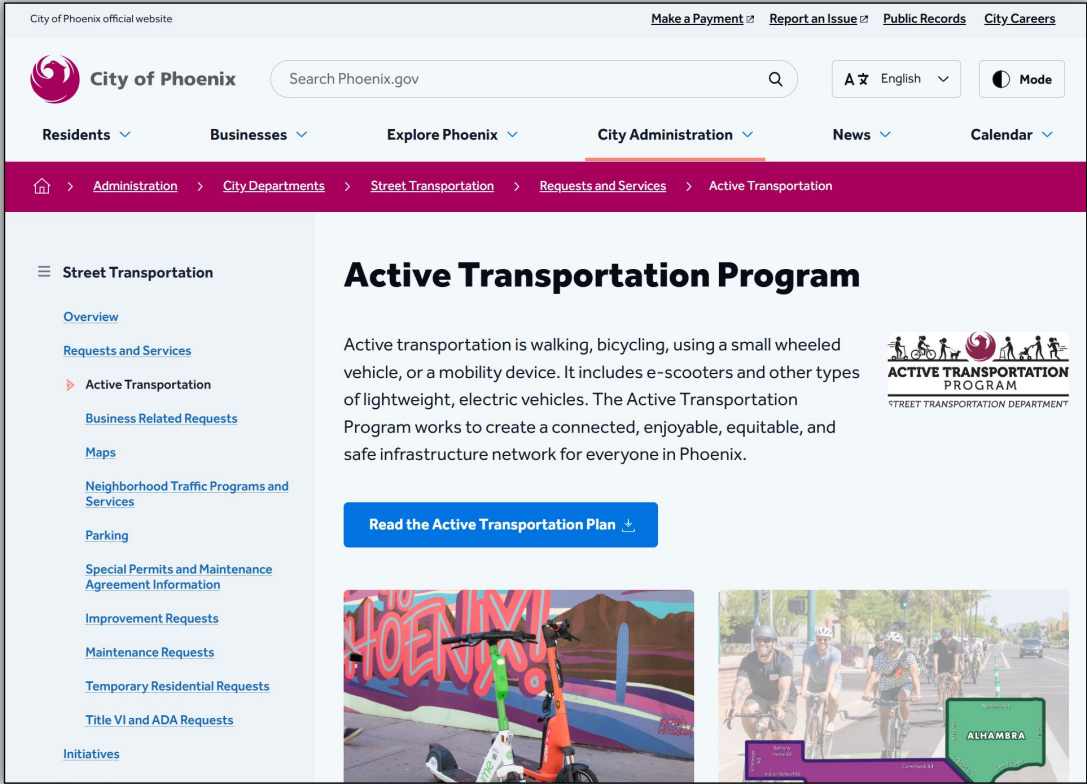
Pedestrian Collisions

Bicycle Collisions

Total Bike Lane Miles

1,194

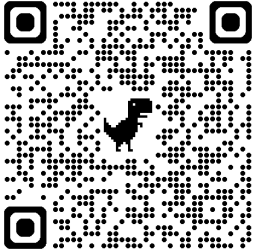
Bicycle Safety Education



Active Transportation Resource Website

<https://www.phoenix.gov/administration/departments/streets/requests-services/active-transportation.html>

Active transportation is defined as walking, bicycling, using a small wheeled vehicle, or a mobility device. It includes e-scooters and other new types of lightweight, electric vehicles. In 2019, the City of Phoenix decided to start using the term "active transportation" to include all of these wonderful ways of getting around our streets. Using a general term also helps us talk about how multi-use paths and HAWKS (pedestrian hybrid beacons) serve people walking, bicycling, or using mobility devices and small wheeled vehicles.



STREET TRANSPORTATION DEPARTMENT

Annual Collision Trends

When Do Collisions Occur

Where Do Collisions Occur

How Do Collisions Occur

Motorcyclist Collisions

Pedestrian Collisions

Bicycle Collisions

Total Bike Lane Miles

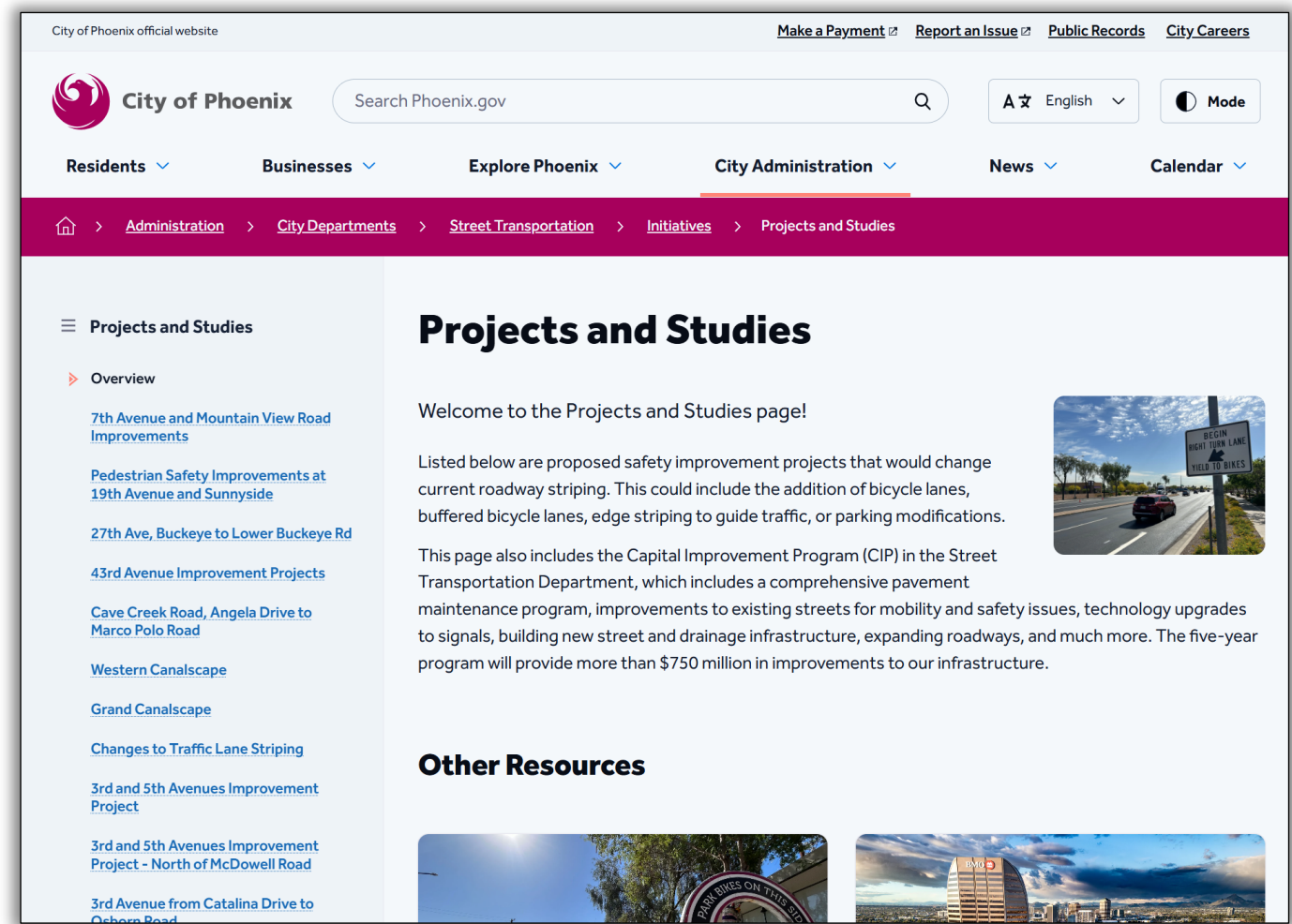
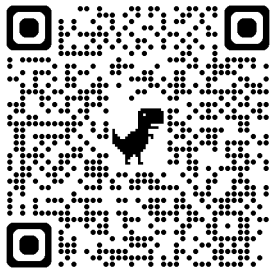
1,194

These icons have been designed using images from Shutterstock.com

Projects and Studies

Welcome to the Projects and Studies page!

On this page are proposed safety improvement projects that would change current roadway striping. This could include the addition of bicycle lanes, buffered bicycle lanes, edge striping to guide traffic, or parking modifications.



<https://www.phoenix.gov/administration/departments/streets/initiatives/projects-studies.html>



Acknowledgements

The City of Phoenix Traffic Collision Summary documents the collisions in the City of Phoenix throughout the calendar year. Collision data utilized for this report was acquired through Phoenix Police records and the database maintained by the Arizona Department of Transportation (ADOT) known as Safety Data Mart (SDM). The Traffic Collision Summary was prepared by Traffic Safety Section staff Jacob Martinez (Chief Engineering Technician).

The SDM database includes motor vehicle crashes that occurred on public right of way where someone was injured, killed or property damage exceeded \$2,000.

The cover graphic of the Phoenix road network is courtesy of the ISS Crew Earth Observations experiment and Image Science & Analysis Laboratory, Johnson Space Center. Other photographs featured in this summary were taken by various employees or consultants of the City of Phoenix Street Transportation Department.

This publication can be made available in an alternative format upon request. Contact the Street Transportation Department at 602-262-6284 if you would like any of these services. Our TTY phone number is 711.

