

SUPPORT SERVICES

- Onsite service coordinator to assist with medical appointments, business correspondence, finances, supplemental food programs, support services and community programs
- Weekly transportation to grocery stores

SOCIAL ACTIVITIES

- Educational, musical and recreational events
- Bingo, crafts, book clubs, walking groups, exercise classes, holiday celebrations and birthday parties
- Onsite resident council

PETS

- One pet permitted per unit (restrictions and deposit apply)

REQUIREMENTS

- Must meet federal income guidelines
- Pass credit, criminal and landlord checks
- Pay a security deposit upon move-in
- Pay for personal cable and telephone utilities
- Pay a mandatory \$2 monthly fee to use the laundry facilities

LOCATION

- Located near the heart of downtown Phoenix, just north of East Van Buren Street, between 21st Place and 24th Street.

EXPERIENCE SAFE & AFFORDABLE APARTMENT *Living*

Fillmore Gardens is a multifamily property that serves seniors 62 or older, and persons with disabilities. This includes ADA requirements with reasonable accommodation. Residents that require in-home support services such as Daily or Assisted Living are welcome to obtain their own level of care as needed.

This community is also subsidized by HUD with rental cost based on household income. Residents pay 30% of their adjusted annual income or 10% of gross income for rent, whichever is greater. The units accommodate no more than two people per unit and include electric and water utilities. Applications are accepted without regard to race, color, national origin, religion, sex, disability or familial status.



City of Phoenix
HOUSING DEPARTMENT

Senior and Disabled Housing Program

Explore Our Communities!

Apply online at
www.phoenix.gov/housing
or stop by Fillmore Gardens in person



City of Phoenix
HOUSING DEPARTMENT

FILLMORE GARDENS

A Community for Seniors and
Disabled Residents



SAFE & INVITING APARTMENT *Living*

A WELCOMING ENVIRONMENT

Fillmore Gardens is a two story garden-style rental community located minutes from shopping, restaurants, healthcare facilities, and public transportation. The location is surrounded by many conveniences including its beautifully groomed grounds and gardens.

CONVENIENT COMMUNITY LIVING

Fillmore Gardens offers safe, comfortable living without the financial and physical responsibilities of homeownership, which allows you more free time to enjoy the many housing and community amenities including: security, support services and social activities.



FILLMORE GARDENS

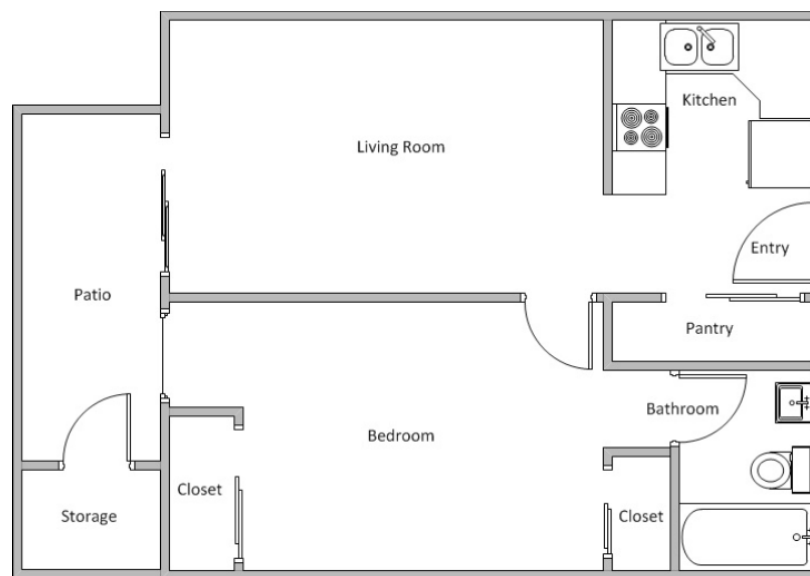
802 North 22nd Place, Phoenix, AZ 85006
Phone: 602-256-3144 | Fax: 602-534-2056

Website: www.phoenix.gov/housing
Follow us on Twitter - @PHXHousing



COMFORTABLE LIVING SPACE

A total of 120 spacious one-bedroom apartments make up this community. Each unit consists of approximately 572 square feet, and includes Energy Star-rated appliances, and new lighting, windows, flooring, and much more. Simply surround yourself with your favorite furnishings and mementos and begin embracing the comforts of home.



FEATURES AND AMENITIES

- Full kitchens with full size refrigerators
- Linen closets
- Wheelchair accessible
- Elevators
- Entry intercom system
- Balconies or patios
- Entertainment room with kitchen
- Library and computer lab
- Barbeque plaza
- Billiards
- Covered resident parking
- Onsite maintenance

SECURITY

- Secured entryways
- Resident access control cards
- Secured parking



Imagine...

*Adult living that offers everything you cherish,
but for far less than you thought possible.*