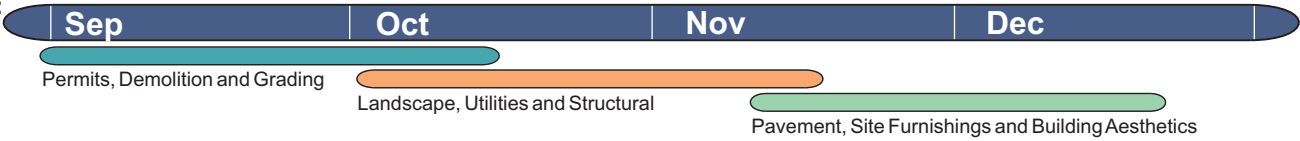


# PIMA CANYON TRAILHEAD

## RENOVATIONS

### November Monthly Update

Schedule:



#### The Site is Closed:

Please note that even though the trails are still open during construction we strongly recommend the use of one of our other trailheads/access points to use the trail system. **Please DO NOT park in the local neighborhood to access the trails** (parking on the residential streets causes unnecessary issues for our neighbors). Please visit [www.phoenix.gov/parks/trails/locations](http://www.phoenix.gov/parks/trails/locations) to find another location that fits your needs.



#### New Ramadas and Bathrooms are up:

Metal columns and rafters are up with the metal roof decking installation scheduled to be completed soon. The concrete walls for the bathroom have been installed. The installation of concrete benches, sidewalks and gabion walls have begun.

#### New Utilities for Modern Restrooms:

Utility connections are nearing completion in the roadway. The installation for the land bridge retaining walls adjacent to the neighborhood are scheduled to be installed in early December. Utility connects at the new restroom have begun.



#### Landscape and Site Restoration:

All salvaged vegetation have been installed. All of the irrigation and landscape in the parking lot islands and around the ramadas have been installed. As soon as the utility connections in the roadway are complete we will begin repairing all scars created by construction.



City of Phoenix

For more information please visit

[www.phoenix.gov/parks/trails/locations](http://www.phoenix.gov/parks/trails/locations) or contact:  
Mike Francis 602.495.5811 [mike.francis@phoenix.gov](mailto:mike.francis@phoenix.gov) or  
Dan Gronseth 602.495.0204 [dan.gronseth@phoenix.gov](mailto:dan.gronseth@phoenix.gov)

South Mountain Park