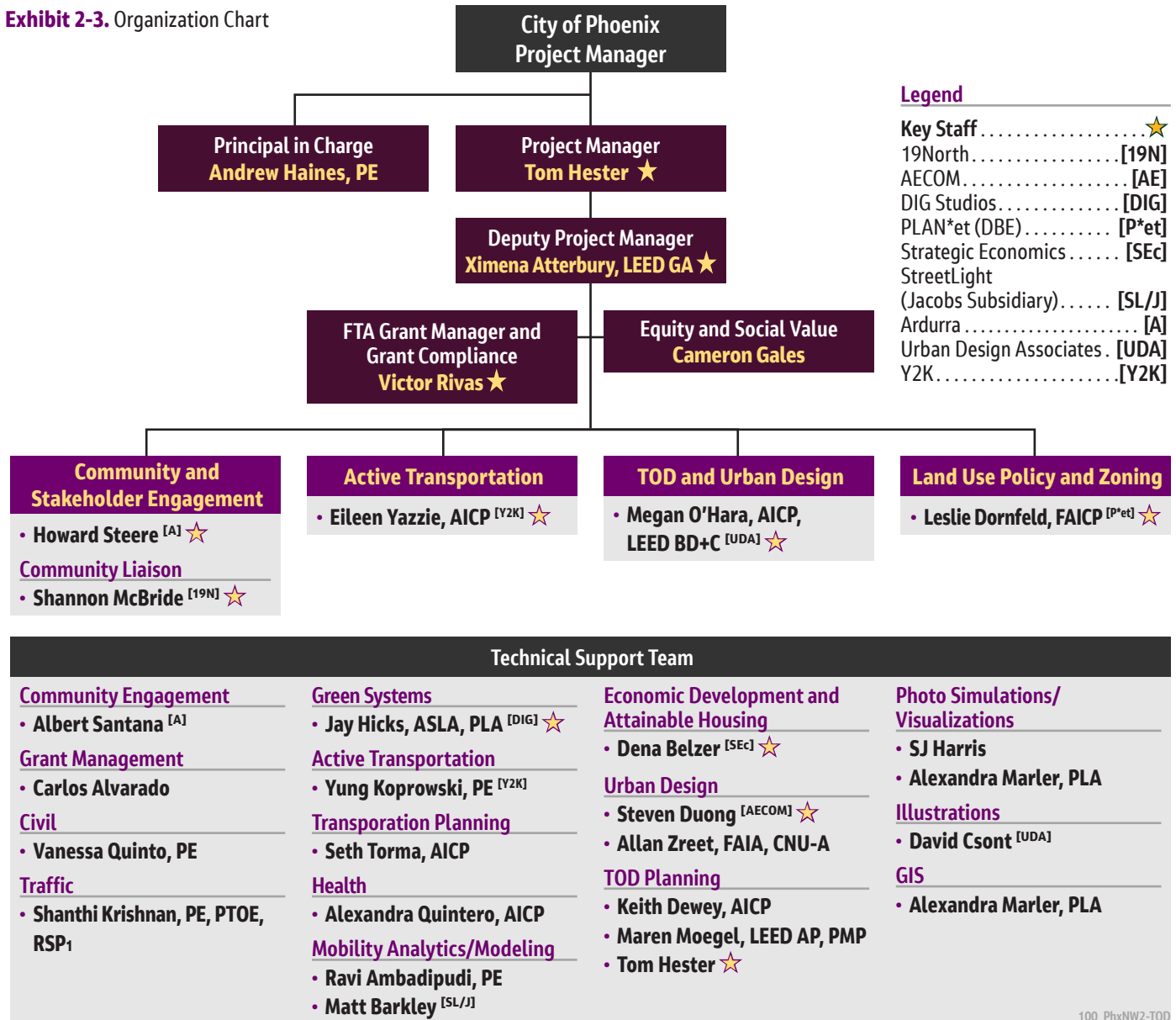


Organization Chart

Exhibit 2-3 below shows the line of responsibilities denoting the key team members. Our team is structured to provide seamless integration between disciplines and ensure the forward-looking stewardship of the Northwest II Transit Oriented Design project.

Our staffing approach provides a single point of contact and full accountability, immediate responsiveness, a streamlined approach to meet the City of Phoenix's needs, and the best local resources and industry experts to deliver to your full satisfaction.

Exhibit 2-3. Organization Chart



Legend

- Key Staff ★
- 19North [19N]
- AECOM [AE]
- DIG Studios [DIG]
- PLAN*et (DBE) [P*et]
- Strategic Economics [SEC]
- StreetLight (Jacobs Subsidiary) [SL/J]
- Ardurra [A]
- Urban Design Associates . [UDA]
- Y2K [Y2K]

“Never doubt that a small group of thoughtful, committed citizens can change the world. Indeed, it is the only thing that ever has.”
— Margaret Mead