



These guidelines outline city requirements in obtaining a parking approval. For further information, contact Planning & Development Department - Traffic Review at 200 W. Washington, 2nd Floor, Phoenix, Arizona 85003 or call (602) 262-7811.

**A. Submittal Requirements** (check one)

- ☐ Design Review (Site Plan required)

Projects that require design review need to incorporate all issues Items B - F of these guidelines. Additional requirements may be discussed at the pre-application conference (Major Review), or with the Counter Team (Minor Review).

- ☐ Exempted from Design Review (Plot Plan required)

The plot plan is a required drawing that is submitted to the city for parking review and approval prior to permit issuance for developments that do not require site plan approval. This drawing is to address the following:

1. Plot Plan drawn to scale (1"-30' or larger) and incorporating required information per *Attachment 1*.
2. Plot Plan to incorporate items B-F of these guidelines.
3. A copy of this plot plan must be included in all submittals to "Building Safety" for review and permit.

**B. Setbacks**

Building and landscape setbacks from the property lines will be required based on the zoning district of the affected property. Parking cannot be placed in the required front yard setback of single family lots without a zoning variance. Consult Chapter Six (6) of the Phoenix Zoning Ordinance for specific zoning setback dimensions and further information. (NOTE: In single-family zoning districts, "non-required" parking may be placed in up to 45% of front yard.)

**NOTE:** All building and landscape setbacks are measured from existing right-of-way (if at ultimate location) or future (ultimate) right-of-way as shown on the Street Classification Map.

**C. Parking Design**

There are three basic patterns of parking lot layouts. The minimum dimensions are given in *Attachments 2 through 6*:

1. Type of Parking

a. 90 Degree Parking

- Most efficient use of space (most parking spaces per square foot of parking)
- Accommodates two-way traffic
- An aisle of 26' is required.

b. Angle Parking

- Can be used where width of parking area is limited.
- Can provide directional control of traffic.
- One-way Driveways are to be signed "IN and "OUT" at the street entrance, along with pavement marked with arrows in the driveways.
- Two-way aisles will not be less than 20' in width.

c. Parallel Parking

- Should not normally be used behind 90-degree parking
- Must have adequate maneuvering space to enter and exit safely

**NOTE:** All maneuvering and parking spaces must be provided on private property, with the exception of single-family homes and duplexes, which may maneuver in the right-of-way or alley.

## 2. Parking Space Size

### a. Standard/Compact Spaces

Normal 90-degree spaces: standard spaces for retail/assembly are 9.5' wide, 19' deep; for multi-family residential/industrial/office are 8.5' wide x 19' deep. *See Attachments 2 through 6.*

- 9' spaces may be used for less than 50% of retail/assembly spaces providing double striped parking spaces are used.
- Compact parking dimensions may only be used for spaces in excess of required parking spaces and shall be laid out in the lowest use areas of the site.
- Compact spaces are 8' wide, by 16' deep.

### b. Accessible Spaces

- The number of accessible spaces must be provided per Section 702 .6 of the Phoenix Zoning Ordinance.
- All accessible spaces shall be 11' wide; 18' deep with an additional 5' access aisle on the right side of the accessible space for ingress/egress from the vehicle. Such spaces will be designated with signs displaying the international symbol for accessible parking. (*Attachment 7*)
- Adjacent accessible spaces can share the 5'x18' access aisle.
- Ramps are not to be located in the access aisle.
- The ratio of public covered accessible stalls to other covered parking stalls must equal overall ADA ratios.
- Accessible spaces should be located to facilitate ease of access to building. Spaces should be in close proximity to sidewalks/building entrances.
- Accessible spaces shall be striped on all sides, unless bordered by curb.
- Accessible walk aisles should not be located behind more than one (1) parked vehicle.

## 3. Paving

All parking areas must consist of a "dust free" surface as per Section 702 of the Phoenix Zoning Ordinance. Such parking areas must be striped to indicate parking spaces. Alternative dust-free surfaces must be approved by the Zoning Administrator. Dust free, typically will be asphalt paving or concrete.

## 4. Safety Curbing

- Six-inch high curbing is required around all parking and maneuvering areas to confine vehicle circulation to parking areas and prevent circulation beyond property lines.
- Safety curbs inside of parking lots are discouraged because of possible trash accumulation problems, motorists driving forward over the curb, and pedestrian safety.

## 5. Visibility Triangles

Visibility triangles are required at all driveway entrances alleys and intersecting streets. Nothing should be placed in these areas that exceed 36" in height (walls, landscaping or trees greater than one foot in diameter). Tree canopies should be no lower than 8'-10'. Please show these triangles on the site plan, landscape plan or plot plan.

Visibility Triangles - Measured along the property lines.

<u>Intersecting Streets</u>	<u>Size</u>	<u>Driveway or Alley to Street</u>
Arterial-Arterial	33' x 33'	10' (into site or alley) x 20' (along property line)
Arterial-Collector	33' x 33'	
Arterial-Local	33' x 15'	
Collector-Collector	33' x 33'	
Collector- Local	33' x 33'	
Local-Local	33' x 33'	

#### D. Landscape Requirements

Generally, landscaping is required between all parking lots and public streets. Depending on the zoning district, a minimum of five percent of the surface parking lot, exclusive of perimeter landscaping and front setbacks, must be landscaped per Section 702 and Section 507 of the Phoenix Zoning Ordinance. Additional landscaping may be required along the perimeter of the parking lot. Perimeter and interior planting areas must be a minimum of 5' in width (exclusive of curbing and vehicle overhang).

Plant materials shall be from the list of drought tolerant plants as outlined in the Arizona Landscape Department Water Resource list.

#### E. Visual Screening

An effective 3' visual screen is required in front of all parking areas that are visible from the public street. Screening along the perimeter of the lot may also be required depending on the zoning of adjacent property. Walls adjacent to driveways are to be 36" in height for 20' on either side of driveway.

#### F. Drainage

Site plans or parking plans should indicate the path of the stormwater drainage, location of catch basins and all other stormwater management devices, as well as any areas of stormwater retention. For further information, refer to the "Storm Water Policies and Standards Manual." A grading and drainage plan may be required for sites over half an acre.

#### G. Driveways (P1255 Series, C.O.P. Detail 1, 2, or 3)

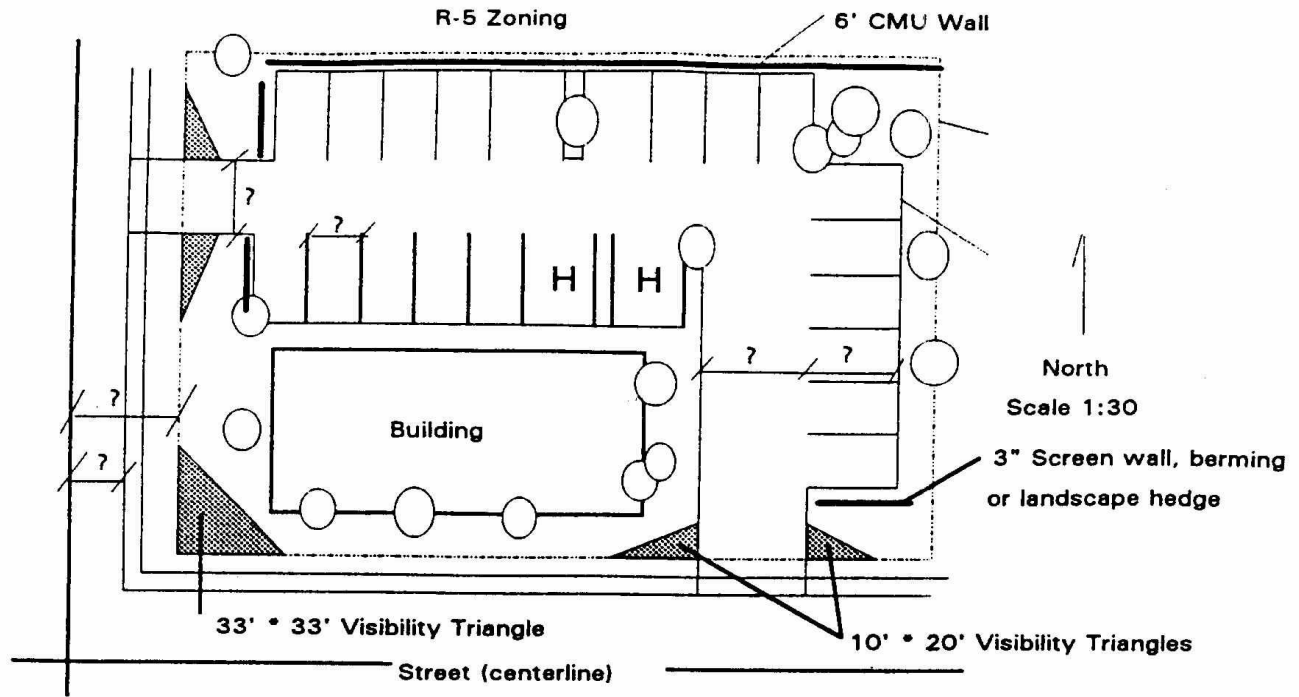
The following policies have been established for driveways:

- Driveways must be constructed to city standards under a permit issued by the Planning & Development Department.
- Single-family residential driveways should be located a minimum of 4' from the curb radius return on a corner lot.
- An accessible walkway must be provided around the perimeter of ALL driveways to provide a minimum cross slope of 50:1.
- Existing unused driveways must be replaced by curb, gutter and sidewalk built to city standards.
- Driveway connections should be located at points that facilitate the efficient entry and exit of vehicles and minimize conflicts with traffic on the streets or neighboring properties.
- A single parcel or contiguous parcels comprising one development should be limited to one driveway, unless traffic volume or street frontage warrants additional driveways.
- On major arterial and arterial streets, the sharing of driveways between adjacent properties and common ingress/egress easements are strongly encouraged. Existing driveways that are unnecessary or substandard should be removed or upgraded in conjunction with any new on-site or street construction.
- On major arterial and arterial streets, large developments should consolidate major driveways at 1/4 or 1/8 mile locations and align them with driveways on the opposite side of the street.

- 
- Driveway Width Policy (*See Attachment 8*)
  - Driveways to corner lots should be located as far away from the intersection as is practical.
  - Driveways are prohibited within the passenger waiting area of bus stops unless relocation of the facility is approved by Public Transit. Driveways should be located such that bus stop improvements are beyond the projection of driveway visibility triangles and drivers will be able to see around bus stop improvements, both existing and planned. Driveways are not to be located within the flat portion of the bus bay (bus parking area.)
  - Driveways may taper to match aisle width on private property (3 to 1 max).
  - The top of wings for all driveways shall be located a minimum of 2'6" from property lines.

**Note:** The Driveway Ordinance prohibits access from commercial property to alleys that abut residential property. Access to alleys must be applied for and shall be considered by the Driveway Hearing Officer. Contact our traffic reviewers for additional information.

Attachment 1



REQUIRED INFORMATION

- Building size, locations, dimension, square footage
- Building/landscape setbacks
- Driveway size, location, dimension
- Typical parking stall dimensions
- Parking calculations (# required / # provided - i.e., 6400 sq. ft. x 80% / 300 = 17.1 – 18)
- Owner
- Site Address
- Zoning District
- Lot Size
- Legal Description
- Property lines / dimensions
- Screening (walls / berms / landscape)
- Safety curbing (6" minimum)
- Landscape Areas
- Quarter Section Number
- Right-of-Way Dimensions
- Centerline of street to back of curb dimensions

Attachment 2

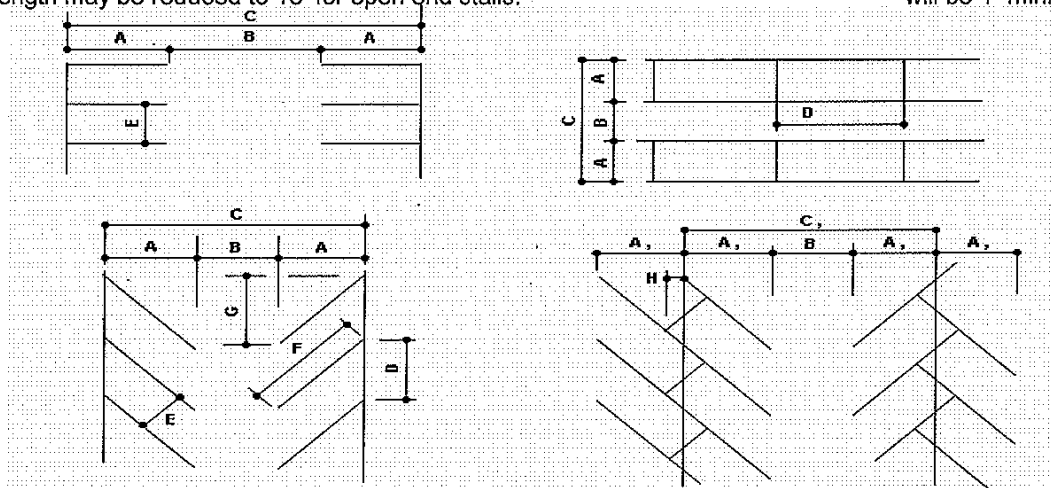
PARKING AREA DIMENSIONS FOR MULTIFAMILY, OFFICE AND INDUSTRIAL  
 8.5 X 18 PARKING SPACES WITH 26' AISLE

DEVELOPMENT SERVICES DEPARTMENT  
 CITY OF PHOENIX

>	A	B	A+B	C	D	E	F	G	H	A,	C,
ANGLE OF PARKING	DEPTH OF STALL	AISLE WIDTH		WIDTH OF BAY	CURB LENGTH	WIDTH OF STRIPE	LENGTH OF STRIPE	WASTE SPACE	DEPTH OF OVERHG	DEPTH OF STALL	WIDTH OF AREA
0	8.5	12 *	20.5	29	23 **	-----	-----	-----	-----	-----	-----
30	16.4	13 *	29.4	45.8	17	8.5	32.7	28.3	3.7	12.7	38.4
45	18.7	14 *	32.7	51.4	12.0	8.5	26.5	18.7	3.0	15.7	45.4
60	19.8	20	39.8	59.6	9.8	8.5	22.9	11.4	2.1	17.7	55.4
90	18	26	44	62	8.5	8.5	18	-----	-----	-----	-----

\* The Fire Department may require wider isles for emergency access.  
 \*\* Curb length may be reduced to 18' for open end stalls.

NOTE: Paint stripe width will be 4" minimum.



WHERE AN ALLEY IS CREDITED AS MANEUVERING AREA FOR A PARKING SPACE, THIS POLICY WILL APPLY SUBJECT TO THE APPROVAL OF A VARIANCE THROUGH THE ZONING ADMINISTRATOR FOR ALLEY MANEUVERING.	ANGLE OF PARKING	MIN. DEPTH ON PVT. PROP.	TOTAL DEPTH INCL. ALLEY
	45	18.7	31.7
	60	19.8	37.8
	90	18	42
TRAFFIC ENGINEERING POLICY T-10-IR EFFECTIVE DATE: February 3, 1999			
REVISED: January 14, 2009			
TRAFFIC ENGINEERING CODE CONSISTANCY COORDINATOR: <i>[Signature]</i> DATE: 3/30/09			

Attachment 3

ATTACHMENT 3

**PARKING AREA DIMENSIONS FOR RETAIL, RESTAURANT AND ASSEMBLY  
9.5' X 18' PARKING SPACES WITH 26' AISLE**

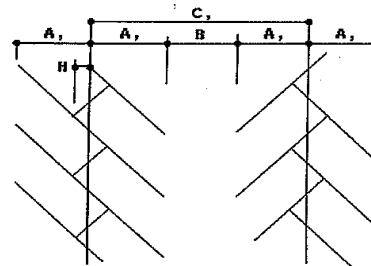
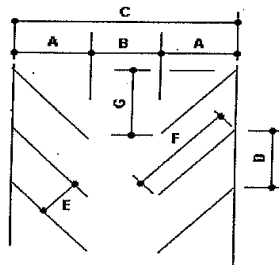
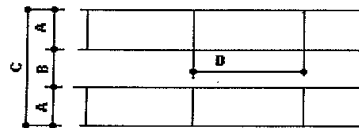
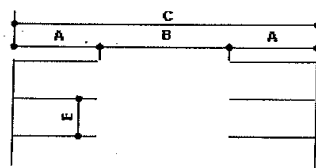
DEVELOPMENT SERVICES DEPARTMENT  
CITY OF PHOENIX

>	A	B	A+B	C	D	E	F	G	H	A <sub>1</sub>	C <sub>1</sub>
ANGLE OF PARKING	DEPTH OF STALL	AISLE WIDTH	SINGLE LOADED WIDTH	WIDTH OF BAY	CURB LENGTH	WIDTH OF STALL	LENGTH OF STRIPE	WASTE SPACE	DEPTH OF OVERHG	DEPTH OF STALL	WIDTH OF AREA
0	9.5	12 *	21.5	31	24**	-----	-----	-----	-----	-----	-----
30	17.3	13 *	29.3	47.6	19	9.5	34.5	30.0	4.2	13.1	39.2
45	19.4	14 *	32.4	52.8	13.4	9.5	27.5	19.4	3.4	16.0	46.0
60	20.3	20	39.3	60.6	11.0	9.5	23.5	11.7	2.4	17.9	55.8
90	18	26	43	62	9.5	9.5	18	-----	-----	-----	-----

\* The Fire Department may require wider isles for emergency access.

\*\* Curb length may be reduced to 19' for open end stalls.

NOTE: Paint stripe width will be 4" minimum.



WHERE AN ALLEY IS CREDITED AS MANEUVERING AREA FOR A PARKING SPACE, THIS POLICY WILL APPLY SUBJECT TO THE APPROVAL OF A VARIANCE THROUGH THE ZONING ADMINISTRATOR FOR ALLEY MANEUVERING.	ANGLE OF PARKING	MIN. DEPTH ON PVT. PROP.	TOTAL DEPTH INCL. ALLEY
	45	19.4	33.4
	60	20.3	40.3
	90	18	43

TRAFFIC ENGINEERING POLICY T-10R  
EFFECTIVE DATE: July 3, 2003

REVISED: January 14, 2009

TRAFFIC ENGINEERING CODE CONSISTANCY COORDINATOR: *Donk* DATE: 1/14/09

Attachment 4

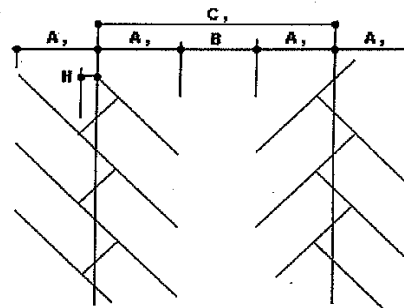
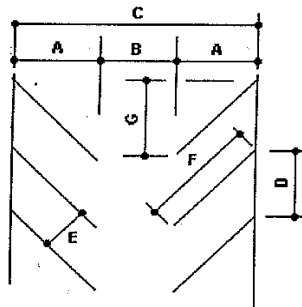
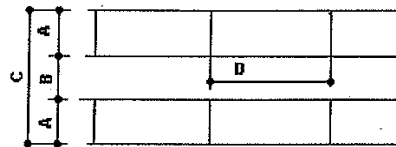
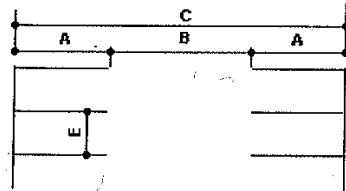
**PARKING AREA DIMENSIONS FOR RETAIL, RESTAURANT AND ASSEMBLY  
 9.5' X 19' PARKING SPACES WITH 24' AISLE**

**DEVELOPMENT SERVICES DEPARTMENT  
 CITY OF PHOENIX**

>	A	B	A+B	C	D	E	F	G	H	A,	C,
ANGLE OF PARKING	DEPTH OF STALL	AISLE WIDTH		WIDTH OF BAY	CURB LENGTH	WIDTH OF STALL	LENGTH OF STRIPE	WASTE SPACE	DEPTH OF OVERHG	DEPTH OF STALL	WIDTH OF AREA
0	9.5	12 *	21.5	31	24**						
30	17.8	12 *	29.8	46.6	19	9.5	35.5	30.8	4.2	13.6	39.2
45	20.2	13 *	33.2	53.4	13.4	9.5	28.5	20.2	3.4	16.8	46.6
60	21.2	18	39.2	60.4	11.0	9.5	24.5	12.2	2.4	18.8	55.6
90	19	24	43	62	9.5	9.5	19				

- \* The Fire Department may require wider isles for emergency access.  
 \*\* Curb length may be reduced to 19' for open end stalls.

NOTE: Paint stripe width will be 4" minimum.



WHERE AN ALLEY IS CREDITED AS MANEUVERING AREA FOR A PARKING SPACE, THIS POLICY WILL APPLY SUBJECT TO THE APPROVAL OF A VARIANCE THROUGH THE ZONING ADMINISTRATOR FOR ALLEY MANEUVERING.	ANGLE OF PARKING	MIN. DEPTH ON PVT. PROP.	TOTAL DEPTH INCL. ALLEY
	45	20.2	33.2
	60	21.2	39.2
	90	19	43
TRAFFIC ENGINEERING POLICY T-10R EFFECTIVE DATE: July 3, 2003		REVISED: January 14, 2009	
TRAFFIC ENGINEERING CODE CONSISTANCY COORDINATOR: <i>Dan F...</i>		DATE: 1/14/09	

Attachment 5

**PARKING AREA DIMENSIONS FOR RETAIL, RESTAURANT AND ASSEMBLY  
 9.5' X 18' GARAGE PARKING SPACES WITH 24' AISLE**

**DEVELOPMENT SERVICES DEPARTMENT  
 CITY OF PHOENIX**

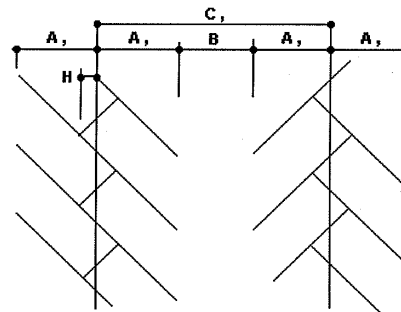
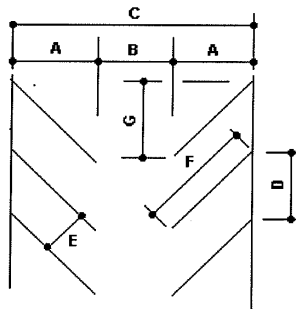
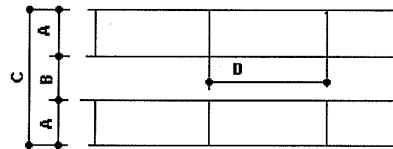
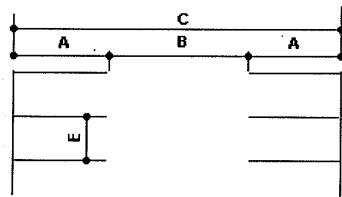


>	A	B	A+B	C	D	E	F	G	H	A,	C,
ANGLE OF PARKING	DEPTH OF STALL	AISLE WIDTH		WIDTH OF BAY	CURB LENGTH	WIDTH OF STALL	LENGTH OF STRIPE	WASTE SPACE	DEPTH OF OVERHG	DEPTH OF STALL	WIDTH OF AREA
0	9.5	12 *	21.5	31	24**	-----	-----	-----	-----	-----	-----
30	17.3	12 *	29.3	46.6	19	9.5	34.5	30.0	4.2	13.1	38.2
45	19.4	13 *	32.4	51.8	13.4	9.5	27.5	19.4	3.4	16.0	45.0
60	20.3	18	38.3	58.6	11.0	9.5	23.5	11.7	2.4	17.9	56.1
90	18	24	42	60	9.5	9.5	18	-----	-----	-----	-----

\* The Fire Department may require wider isles for emergency access.

\*\* Curb length may be reduced to 19' for open end stalls.

NOTE: Paint stripe width will be 4" minimum.



WHERE AN ALLEY IS CREDITED AS MANEUVERING AREA FOR A PARKING SPACE, THIS POLICY WILL APPLY SUBJECT TO THE APPROVAL OF A VARIANCE THROUGH THE ZONING ADMINISTRATOR FOR ALLEY MANEUVERING.	ANGLE OF PARKING	MIN. DEPTH ON PVT. PROP.	TOTAL DEPTH INCL. ALLEY
	45	19.4	32.4
	60	20.3	38.3
	90	18	42

TRAFFIC ENGINEERING POLICY T-10R  
 EFFECTIVE DATE: July 3, 2003

REVISED: January 14, 2009

TRAFFIC ENGINEERING CODE CONSISTANCY COORDINATOR:

*Dark Jones*

DATE: 1/14/09

Attachment 6

**PARKING AREA DIMENSIONS FOR RETAIL, RESTAURANT AND ASSEMBLY  
9' X 18' PARKING SPACES WITH 26' AISLE WITH DOUBLE STRIPES**

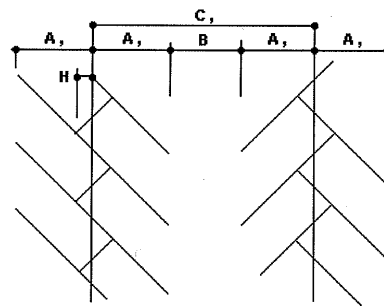
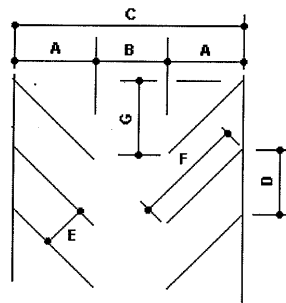
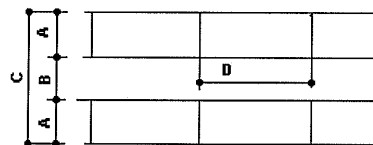
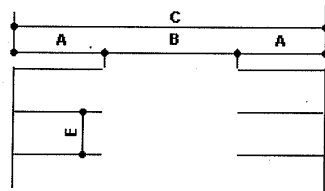
**DEVELOPMENT SERVICES DEPARTMENT  
CITY OF PHOENIX**

>	A	B	A+B	C	D	E	F	G	H	A,	C,
ANGLE OF PARKING	DEPTH OF STALL	AISLE WIDTH	SINGLE LOADED WIDTH	WIDTH OF BAY	CURB LENGTH	WIDTH OF STALL	LENGTH OF STRIPE	WASTE SPACE	DEPTH OF OVERHG	DEPTH OF STALL	WIDTH OF AREA
0	9	12 *	21	30	24 **	-----	-----	-----	-----	-----	-----
30	16.8	13 *	28.8	46.6	18	9	33.6	29.1	3.9	12.9	38.8
45	19.1	14 *	32.1	52.2	12.7	9	27.0	19.1	3.2	15.9	45.8
60	20.1	20	39.1	60.2	10.4	9	23.2	11.6	2.2	17.8	55.7
90	18	26	43	62	9	9	18	-----	-----	-----	-----

\* The Fire Department may require wider isles for emergency access. NOTE: Double striping required.

\*\* Curb length may be reduced to 19' for open end stalls.

Paint stripes will be 4" separated by 8" for retail, restaurants and assembly.



WHERE AN ALLEY IS CREDITED AS MANEUVERING AREA FOR A PARKING SPACE, THIS POLICY WILL APPLY SUBJECT TO THE APPROVAL OF A VARIANCE THROUGH THE ZONING ADMINISTRATOR FOR ALLEY MANEUVERING.

ANGLE OF PARKING	MIN. DEPTH ON PVT. PROP.	TOTAL DEPTH INCL. ALLEY
45	19.1	33.1
60	20.1	40.1
90	18	43

TRAFFIC ENGINEERING POLICY T-10R  
EFFECTIVE DATE: July 3, 2003

REVISED: January 14, 2009

TRAFFIC ENGINEERING CODE CONSISTANCY COORDINATOR: *Dan F...* DATE: 1/14/09

**BACK TO BACK ACCESSIBLE PARKING**

**DOUBLE ACCESSIBLE PARKING**

**NOTES:**

- 8 FT ACCESS AISLE REQUIRED. ACCESS AISLES LOCATED ON EITHER SIDE OF THE PARKING SPACE EXCEPT FOR ANGLED PARKING SPACES WHICH SHALL HAVE ACCESS AISLES LOCATED ON THE PASSENGER SIDE OF THE PARKING SPACES.
- ACCESS SPACES MUST BE PROMINENTLY OUTLINED IN COLORS OR MATERIALS CONTRASTING FROM REGULAR PARKING SPACES
  - 4" OUTLINE STRIPING REQUIRED (TRAFFIC YELLOW PREFERRED)
  - ACCESS AISLE SHALL BE CLEARLY MARKED (CROSSHATCHING STRIPES SPACE 2 FT O.C. PREFERRED)
- INTERNATIONAL ACCESSIBLE SYMBOL REQUIRED, BLUE AND WHITE SYMBOLS PREFERRED, A SYMBOL CAN BE DISPLAYED WITHOUT BLUE BACKGROUND, PREFERRED SYMBOL SHOWN.
- ACCESSIBLE SIGN REQUIRED - MUST NEVER BE OBSCURED, RECOMMENDED LOCATION IS TO BE NO GREATER THAN 10 FEET FROM CURB.
- ONE OUT OF EVERY 8 SPACES SHALL BE VAN ACCESSIBLE AND HAVE A MINIMUM VERTICAL CLEARANCE OF 8 FT 2 INCHES AT GARAGE AND UNDER CONOPES. THE VERTICAL SIGN SHALL CONTAIN THE DESIGNATION "VAN ACCESSIBLE"
- CURB STOPS ARE REQUIRED WHERE SIDEWALKS ARE FLUSH WITH THE PARKING SPACES. CURB STOPS AT OTHER LOCATIONS ARE OPTIONAL.
- SEE PARKING AREA DIMENSION POLICIES FOR ANGLED PARKING.
- WHERE A TOTAL OF 4 OR FEWER PARKING SPACES ARE PROVIDED, IDENTIFICATION OF ACCESSIBLE PARKING SPACES SHALL NOT BE REQUIRED. ACCESSIBLE PARKING SPACE DIMENSIONS SHALL BE MAINTAINED AND THE ACCESS AISLE SHALL BE PROVIDED.
- SEE ZONING ORDINANCE SECTION 702 AND SHEET 3 FOR THE LAYOUT SPECIFICATION FOR ASSIGNED MULTI FAMILY ACCESSIBLE PARKING SPACES.

Attachment 8

DRIVEWAY WIDTHS POLICY

Street Classification	Type of Development					
	Single Family	MultiFamily/Commercial < 30 spaces	> 30 spaces	Gas Station	Truck Facilities	Gates
Local Residential	12' one car 16' two car	24' - 30'	30'			
Local Commercial/Industrial		30' - 40' ***	30' - 40' ***	40' ***	40' - 50' ***	**
Collector Residential	16' minimum	30' ***	30' ***	40' ***		**
Collector Commercial/Industrial		30' - 40' ***	30' - 50' ***	40' - 50' ***	40' - 50' ***	**
Arterial	Discouraged Except for Large Lot-Circular Drives *	30' ***	40' ***	40' - 50' ***	40' - 50' ***	**

\* Minimum 82' property width

\*\* See gate access turnaround handout

\*\*\* Median - 30' maximum unless there is significant truck access - then 40'

Local/Collector One Way		Arterial One Way	
In	Out	In	Out
24'	16'	24'	20'