

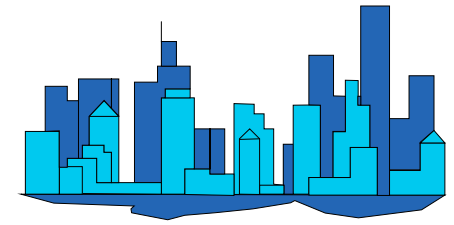


City of Phoenix

Monthly Count Of Actual Offenses Known To Police

Part 1 Crimes

By Uniform Crime Reporting (UCR) Classifications
2019 Calendar Year-To-Date



	JAN	FEB	MAR	1st QTR TOTAL	APR	MAY	JUN	2nd QTR TOTAL	JUL	AUG	SEP	3rd QTR TOTAL	OCT	NOV	DEC	4th QTR TOTAL	2019 YEAR TO DATE TOTAL
Criminal Homicide	9	12	9	30	18	13	13	44	0	0	0	0	0	0	0	0	74
a. Murder and Non-Negligent Manslaughter	8	12	8	28	18	11	13	42	0	0	0	0	0	0	0	0	70
b. Manslaughter by Negligence	1	0	1	2	0	2	0	2	0	0	0	0	0	0	0	0	4
Total Rape	93	72	88	253	108	96	93	297	0	0	0	0	0	0	0	0	550
a. Rape	88	69	82	239	98	87	90	275	0	0	0	0	0	0	0	0	514
b. Attempts to commit rape	5	3	6	14	10	9	3	22	0	0	0	0	0	0	0	0	36
Robbery	328	242	217	787	246	249	282	777	0	0	0	0	0	0	0	0	1,564
a. Firearm	138	110	69	317	72	90	104	266	0	0	0	0	0	0	0	0	583
b. Knife or Cutting Instrument	39	27	32	98	31	35	23	89	0	0	0	0	0	0	0	0	187
c. Other Dangerous Weapon	25	17	31	73	21	27	31	79	0	0	0	0	0	0	0	0	152
d. Strong-Arm (hands, fists, feet, etc.)	126	88	85	299	122	97	124	343	0	0	0	0	0	0	0	0	642
Aggravated Assault	516	493	634	1,643	597	599	636	1,832	0	0	0	0	0	0	0	0	3,475
Total Violent Crimes	946	819	948	2,713	969	957	1,024	2,950	0	0	0	0	0	0	0	0	5,663
Burglary	816	684	824	2,324	827	893	857	2,577	0	0	0	0	0	0	0	0	4,901
a. Forcible Entry	595	510	579	1,684	596	635	609	1,840	0	0	0	0	0	0	0	0	3,524
b. Unlawful Entry - No Force	167	133	168	468	166	206	179	551	0	0	0	0	0	0	0	0	1,019
c. Attempted Forcible Entry	54	41	77	172	65	52	69	186	0	0	0	0	0	0	0	0	358
Larceny - Theft	3,559	3,100	3,188	9,847	3,220	3,511	3,299	10,030	0	0	0	0	0	0	0	0	19,877
Motor Vehicle Theft	557	475	528	1,560	577	637	644	1,858	0	0	0	0	0	0	0	0	3,418
a. Autos	418	354	388	1,160	414	454	487	1,355	0	0	0	0	0	0	0	0	2,515
b. Trucks and Buses	123	80	95	298	106	139	97	342	0	0	0	0	0	0	0	0	640
c. Other Vehicles	16	41	45	102	57	44	60	161	0	0	0	0	0	0	0	0	263
Arson	10	17	16	43	19	14	28	61	0	0	0	0	0	0	0	0	104
Total Property Crimes	4,942	4,276	4,556	13,774	4,643	5,055	4,828	14,526	0	0	0	0	0	0	0	0	28,300
TOTAL PART 1 CRIMES	5,888	5,095	5,504	16,487	5,612	6,012	5,852	17,476	0	0	0	0	0	0	0	0	33,963

Motorcycles are now being grouped with "Other Vehicles" starting October 2015.

Does not include "Unfounded" cases by UCR definition.