

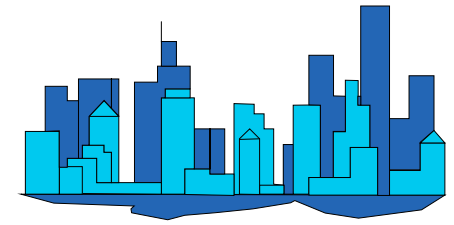


City of Phoenix

Monthly Count Of Actual Offenses Known To Police

Part 1 Crimes

By Uniform Crime Reporting (UCR) Classifications
2020 Calendar Year-To-Date



	JAN	FEB	MAR	1st QTR TOTAL	APR	MAY	JUN	2nd QTR TOTAL	JUL	AUG	SEP	3rd QTR TOTAL	OCT	NOV	DEC	4th QTR TOTAL	2020 YEAR TO DATE TOTAL
Criminal Homicide	18	13	13	44	14	19	16	49	0	0	0	0	0	0	0	0	93
a. Murder and Non-Negligent Manslaughter	18	12	12	42	14	19	14	47	0	0	0	0	0	0	0	0	89
b. Manslaughter by Negligence	0	1	1	2	0	0	2	2	0	0	0	0	0	0	0	0	4
Total Rape	86	88	101	275	89	89	80	258	0	0	0	0	0	0	0	0	533
a. Rape	83	77	97	257	79	84	76	239	0	0	0	0	0	0	0	0	496
b. Attempts to commit rape	3	11	4	18	10	5	4	19	0	0	0	0	0	0	0	0	37
Robbery	271	271	312	854	252	242	216	710	0	0	0	0	0	0	0	0	1,564
a. Firearm	104	105	125	334	86	63	68	217	0	0	0	0	0	0	0	0	551
b. Knife or Cutting Instrument	27	19	31	77	29	34	22	85	0	0	0	0	0	0	0	0	162
c. Other Dangerous Weapon	32	23	38	93	21	25	29	75	0	0	0	0	0	0	0	0	168
d. Strong-Arm (hands, fists, feet, etc.)	108	124	118	350	116	120	97	333	0	0	0	0	0	0	0	0	683
Aggravated Assault	582	583	712	1,877	805	893	780	2,478	0	0	0	0	0	0	0	0	4,355
Total Violent Crimes	957	955	1,138	3,050	1,160	1,243	1,092	3,495	0	0	0	0	0	0	0	0	6,545
Burglary	771	591	678	2,040	651	652	534	1,837	0	0	0	0	0	0	0	0	3,877
a. Forcible Entry	535	411	431	1,377	437	429	326	1,192	0	0	0	0	0	0	0	0	2,569
b. Unlawful Entry - No Force	172	145	199	516	175	175	170	520	0	0	0	0	0	0	0	0	1,036
c. Attempted Forcible Entry	64	35	48	147	39	48	38	125	0	0	0	0	0	0	0	0	272
Larceny - Theft	3,555	3,221	3,307	10,083	3,098	2,968	2,378	8,444	0	0	0	0	0	0	0	0	18,527
Motor Vehicle Theft	663	661	646	1,970	600	610	597	1,807	0	0	0	0	0	0	0	0	3,777
a. Autos	422	409	406	1,237	385	402	397	1,184	0	0	0	0	0	0	0	0	2,421
b. Trucks and Buses	199	219	196	614	158	150	159	467	0	0	0	0	0	0	0	0	1,081
c. Other Vehicles	42	33	44	119	57	58	41	156	0	0	0	0	0	0	0	0	275
Arson	27	28	17	72	33	25	29	87	0	0	0	0	0	0	0	0	159
Total Property Crimes	5,016	4,501	4,648	14,165	4,382	4,255	3,538	12,175	0	0	0	0	0	0	0	0	26,340
TOTAL PART 1 CRIMES	5,973	5,456	5,786	17,215	5,542	5,498	4,630	15,670	0	0	0	0	0	0	0	0	32,885

Motorcycles are now being grouped with "Other Vehicles" starting October 2015.

Does not include "Unfounded" cases by UCR definition.