



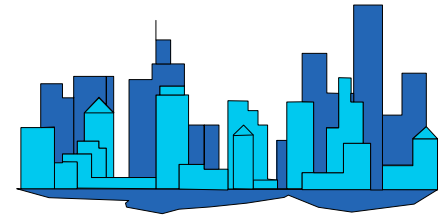
City of Phoenix

Monthly Count Of Actual Offenses Known To Police

Part 1 Crimes

By Uniform Crime Reporting (UCR) Classifications

2023 Calendar Year-To-Date



	JAN	FEB	MAR	1st QTR TOTAL	APR	MAY	JUN	2nd QTR TOTAL	JUL	AUG	SEP	3rd QTR TOTAL	OCT	NOV	DEC	4th QTR TOTAL	2023 YEAR TO DATE TOTAL
Criminal Homicide	13	17	17	47	16	0	0	16	0	0	0	0	0	0	0	0	63
a. Murder and Non-Negligent Manslaughter	12	17	17	46	16	0	0	16	0	0	0	0	0	0	0	0	62
b. Manslaughter by Negligence	1	0	0	1	0	0	0	0	0	0	0	0	0	0	0	0	1
Total Rape	92	81	103	276	92	0	0	92	0	0	0	0	0	0	0	0	368
a. Rape	85	73	97	255	87	0	0	87	0	0	0	0	0	0	0	0	342
b. Attempts to commit rape	7	8	6	21	5	0	0	5	0	0	0	0	0	0	0	0	26
Robbery	213	207	231	651	222	0	0	222	0	0	0	0	0	0	0	0	873
a. Firearm	90	70	56	216	65	0	0	65	0	0	0	0	0	0	0	0	281
b. Knife or Cutting Instrument	25	24	22	71	25	0	0	25	0	0	0	0	0	0	0	0	96
c. Other Dangerous Weapon	19	19	24	62	23	0	0	23	0	0	0	0	0	0	0	0	85
d. Strong-Arm (hands, fists, feet, etc.)	79	94	129	302	109	0	0	109	0	0	0	0	0	0	0	0	411
Aggravated Assault	694	686	772	2,152	810	0	0	810	0	0	0	0	0	0	0	0	2,962
Total Violent Crimes	1,012	991	1,123	3,126	1,140	0	0	1,140	0	0	0	0	0	0	0	0	4,266
Burglary	495	462	491	1,448	432	0	0	432	0	0	0	0	0	0	0	0	1,880
a. Forcible Entry	317	295	303	915	282	0	0	282	0	0	0	0	0	0	0	0	1,197
b. Unlawful Entry - No Force	146	141	154	441	122	0	0	122	0	0	0	0	0	0	0	0	563
c. Attempted Forcible Entry	32	26	34	92	28	0	0	28	0	0	0	0	0	0	0	0	120
Larceny - Theft	2,662	2,118	2,343	7,123	2,183	0	0	2,183	0	0	0	0	0	0	0	0	9,306
Motor Vehicle Theft	705	584	602	1,891	687	0	0	687	0	0	0	0	0	0	0	0	2,578
a. Autos	489	403	422	1,314	472	0	0	472	0	0	0	0	0	0	0	0	1,786
b. Trucks and Buses	168	120	118	406	121	0	0	121	0	0	0	0	0	0	0	0	527
c. Other Vehicles	48	61	62	171	94	0	0	94	0	0	0	0	0	0	0	0	265
Arson	15	9	17	41	17	0	0	17	0	0	0	0	0	0	0	0	58
Total Property Crimes	3,877	3,173	3,453	10,503	3,319	0	0	3,319	0	0	0	0	0	0	0	0	13,822
TOTAL PART 1 CRIMES	4,889	4,164	4,576	13,629	4,459	0	0	4,459	0	0	0	0	0	0	0	0	18,088

Motorcycles are now being grouped with "Other Vehicles" starting October 2015.

Does not include "Unfounded" cases by UCR definition.