



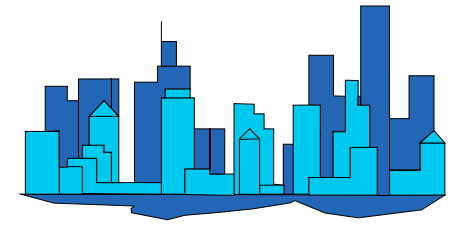
City of Phoenix

Monthly Count Of Actual Offenses Known To Police

Part 1 Crimes

By Uniform Crime Reporting (UCR) Classifications

2021 Calendar Year-To-Date



	JAN	FEB	MAR	1st QTR TOTAL	APR	MAY	JUN	2nd QTR TOTAL	JUL	AUG	SEP	3rd QTR TOTAL	OCT	NOV	DEC	4th QTR TOTAL	2021 YEAR TO DATE TOTAL
Criminal Homicide	13	19	11	43	15	18	14	47	22	22	14	58	0	0	0	0	148
a. Murder and Non-Negligent Manslaughter	13	19	11	43	14	18	13	45	21	22	14	57	0	0	0	0	145
b. Manslaughter by Negligence	0	0	0	0	1	0	1	2	1	0	0	1	0	0	0	0	3
Total Rape	76	88	95	259	89	93	84	266	93	100	98	291	0	0	0	0	816
a. Rape	75	86	91	252	82	87	76	245	81	92	88	261	0	0	0	0	758
b. Attempts to commit rape	1	2	4	7	7	6	8	21	12	8	10	30	0	0	0	0	58
Robbery	330	265	274	869	214	241	267	722	285	282	261	828	0	0	0	0	2,419
a. Firearm	116	80	93	289	65	77	89	231	96	91	81	268	0	0	0	0	788
b. Knife or Cutting Instrument	45	24	24	93	19	31	34	84	25	42	41	108	0	0	0	0	285
c. Other Dangerous Weapon	34	38	38	110	23	25	30	78	41	38	23	102	0	0	0	0	290
d. Strong-Arm (hands, fists, feet, etc.)	135	123	119	377	107	108	114	329	123	111	116	350	0	0	0	0	1,056
Aggravated Assault	672	659	685	2,016	743	820	805	2,368	848	787	691	2,326	0	0	0	0	6,710
Total Violent Crimes	1,091	1,031	1,065	3,187	1,061	1,172	1,170	3,403	1,248	1,191	1,064	3,503	0	0	0	0	10,093
Burglary	585	550	568	1,703	500	468	472	1,440	535	584	520	1,639	0	0	0	0	4,782
a. Forcible Entry	380	322	354	1,056	310	288	316	914	340	370	295	1,005	0	0	0	0	2,975
b. Unlawful Entry - No Force	173	192	181	546	164	155	128	447	159	175	183	517	0	0	0	0	1,510
c. Attempted Forcible Entry	32	36	33	101	26	25	28	79	36	39	42	117	0	0	0	0	297
Larceny - Theft	3,270	3,267	3,280	9,817	2,564	2,767	2,751	8,082	2,942	3,104	3,169	9,215	0	0	0	0	27,114
Motor Vehicle Theft	627	623	638	1,888	564	641	671	1,876	650	687	745	2,082	0	0	0	0	5,846
a. Autos	383	408	392	1,183	341	418	443	1,202	431	436	482	1,349	0	0	0	0	3,734
b. Trucks and Buses	192	159	182	533	152	146	181	479	165	197	194	556	0	0	0	0	1,568
c. Other Vehicles	52	56	64	172	71	77	47	195	54	54	69	177	0	0	0	0	544
Arson	30	26	24	80	31	21	22	74	11	16	15	42	0	0	0	0	196
Total Property Crimes	4,512	4,466	4,510	13,488	3,659	3,897	3,916	11,472	4,138	4,391	4,449	12,978	0	0	0	0	37,938
TOTAL PART 1 CRIMES	5,603	5,497	5,575	16,675	4,720	5,069	5,086	14,875	5,386	5,582	5,513	16,481	0	0	0	0	48,031

Motorcycles are now being grouped with "Other Vehicles" starting October 2015.

Does not include "Unfounded" cases by UCR definition.