

ARAN

Automated Road Analyzer

"Who is that driving around Phoenix?"



Meet Detective ARAN

Detective ARAN is collecting evidence of road conditions to plan pavement preservation treatments to help keep Phoenix streets in good repair.

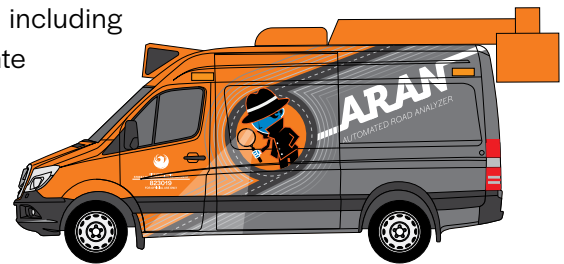
This high-tech vehicle is equipped with cameras and software to collect, categorize and assess road quality. Using a high-speed profiler, it evaluates roughness, smoothness, cracking and rutting as it travels along with the flow of traffic.

ARAN delivers roadway information to our city experts using video, still-photo images, GPS locations and precise measurements of pavement condition.

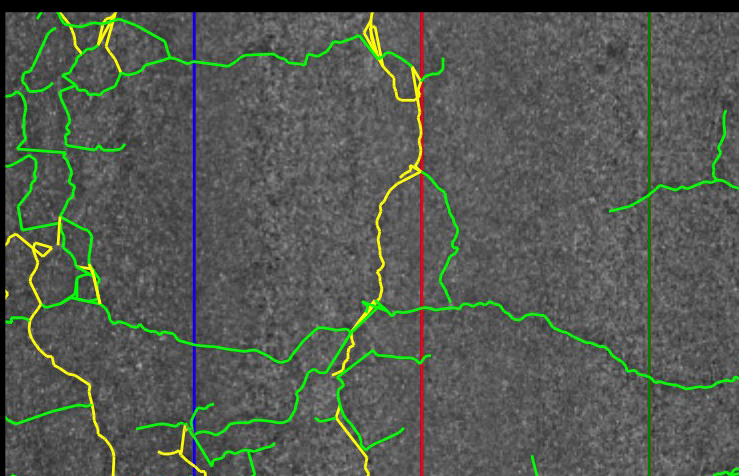
All of this information and more is used to schedule roadway repairs based on objective scientific data to ensure roads are proactively maintained based on need.

Benefits for Phoenix

- ARAN helps us use money more efficiently and equitably to maintain and improve the overall road network condition.
- There is no need to restrict public access to roads during assessment. ARAN travels along with traffic and gathers data at normal road speeds.
- With the specialized information gathered, including 3-D analytics, we will make on-time, accurate roadway choices for repair and resurfacing.



To learn more about the paving program, visit phoenix.gov/pavementprogram.



ARAN mapped these cracks in the road. Yellow indicates deeper, more severe surface damage.

2 Years

to survey all of our local and major streets

15,000

total lane miles will be evaluated

Hard at Work

ARAN is making a difference with eyes on Phoenix roadways. This program is part of the Phoenix Transportation 2050 plan.

Questions? 602.262.6284
(TTY use 711)

