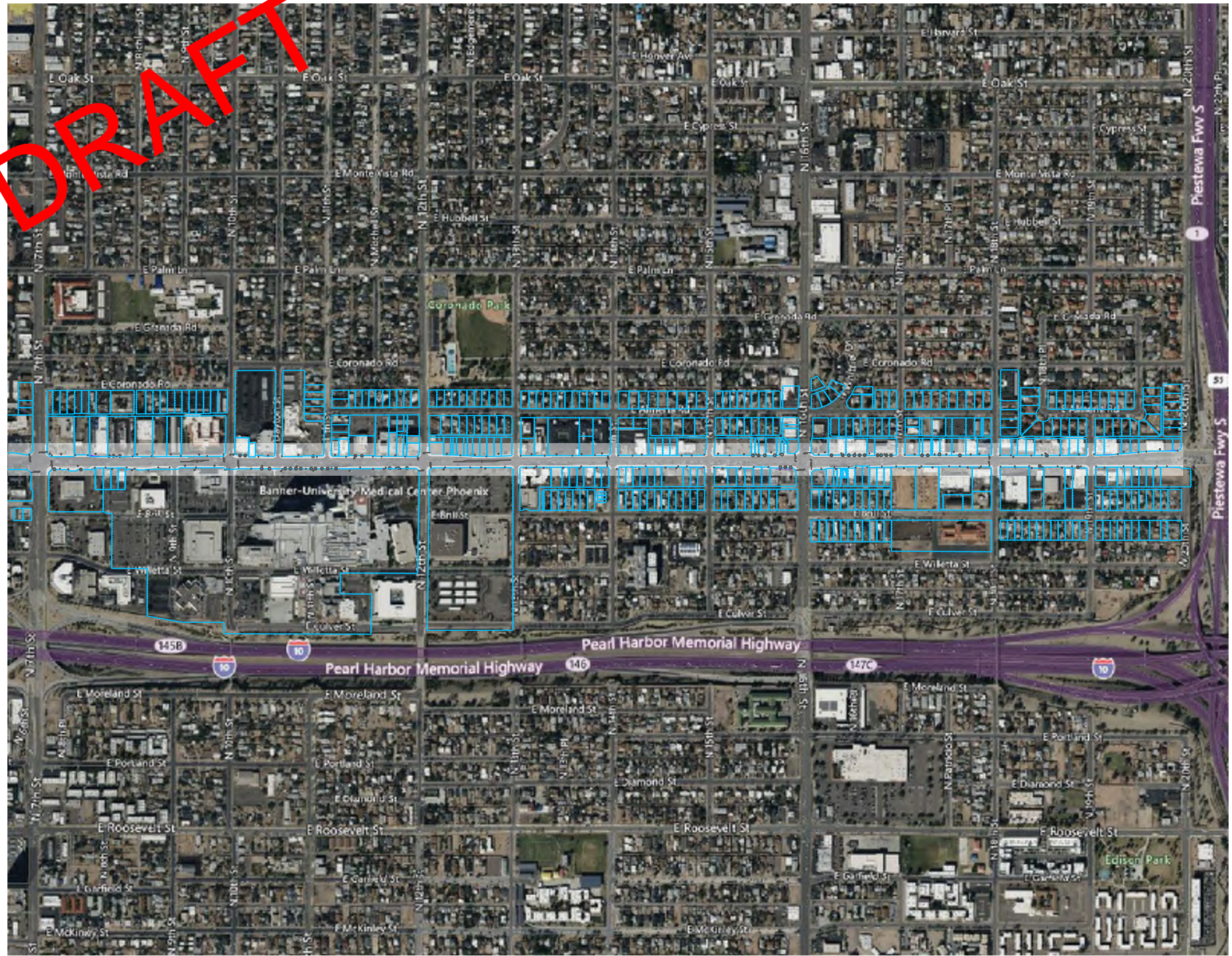


# McDowell Road Sidewalk Revitalization - 7th St to SR-51

## Concept 2 - 7ft Sidewalk With RoW Takes

**DRAFT**



### Quantities

①③	Street Light Relocation:	28
②③	Fire Hydrant Relocation:	4
④③	Signal Cabinet Relocation:	1
⑤③	Water Main Relocation:	1
⑦	Potential Private Infrastructure Conflict:	23
⑩	Proposed Traffic Signal Improvement:	4
⑪	Proposed HAWK	2
⑫	Proposed Box Tree	49
⑬	Proposed Median Improvement:	2
	Proposed Sidewalk Within Existing Right of Way	8,625 sqft
⑰	Existing Sidewalk	120,427 sqft
	Proposed Sidewalk Within Existing Easement	512 sqft
⑭	Pedestrian Scale Lights	162
	Proposed Sidewalk Outside Existing Right of Way	3,116 sqft

### Legend

- Existing Right of Way Lines
- Existing Easement Lines
- Proposed 7ft Sidewalk Extents

**Michael Baker**  
INTERNATIONAL

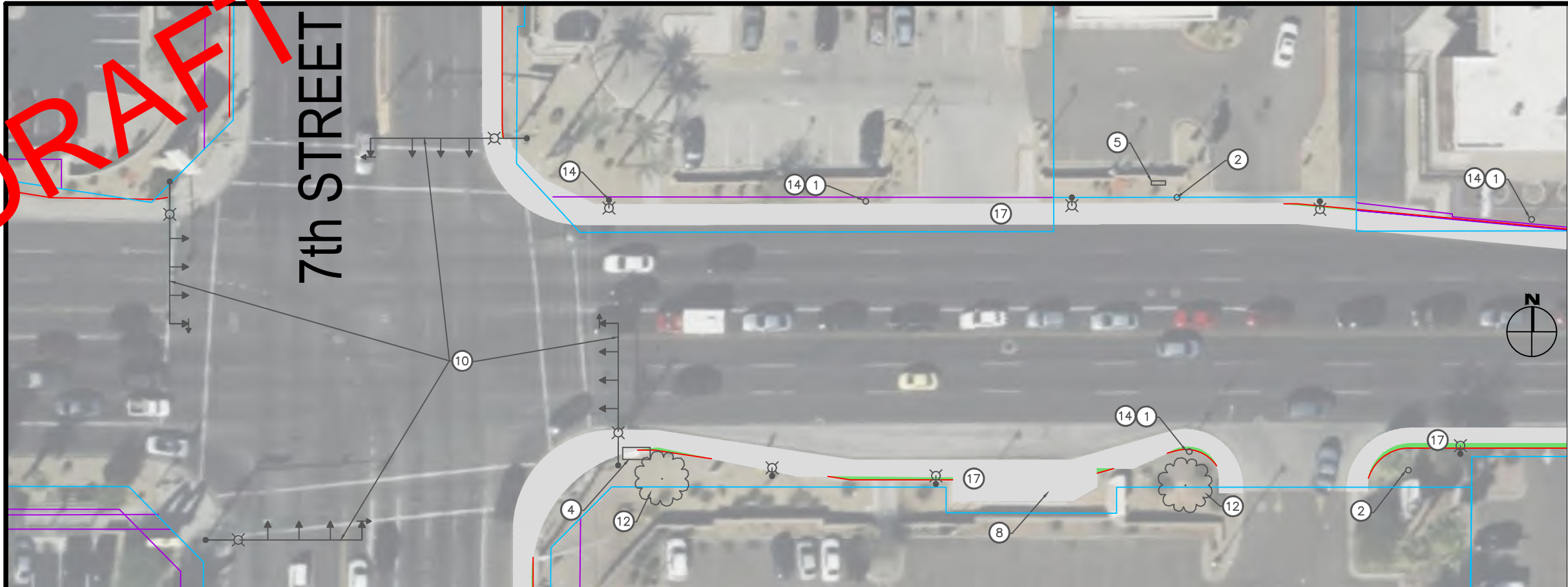
DESIGNED BY: SS	ISSUE DATE: 5/31/2023
DRAWN BY: SS	SOLICITATION NO.:
CHECKED BY: JF	CONTRACT NO.:
SUBMITTED BY: JF	SIZE:

**Concept 2**

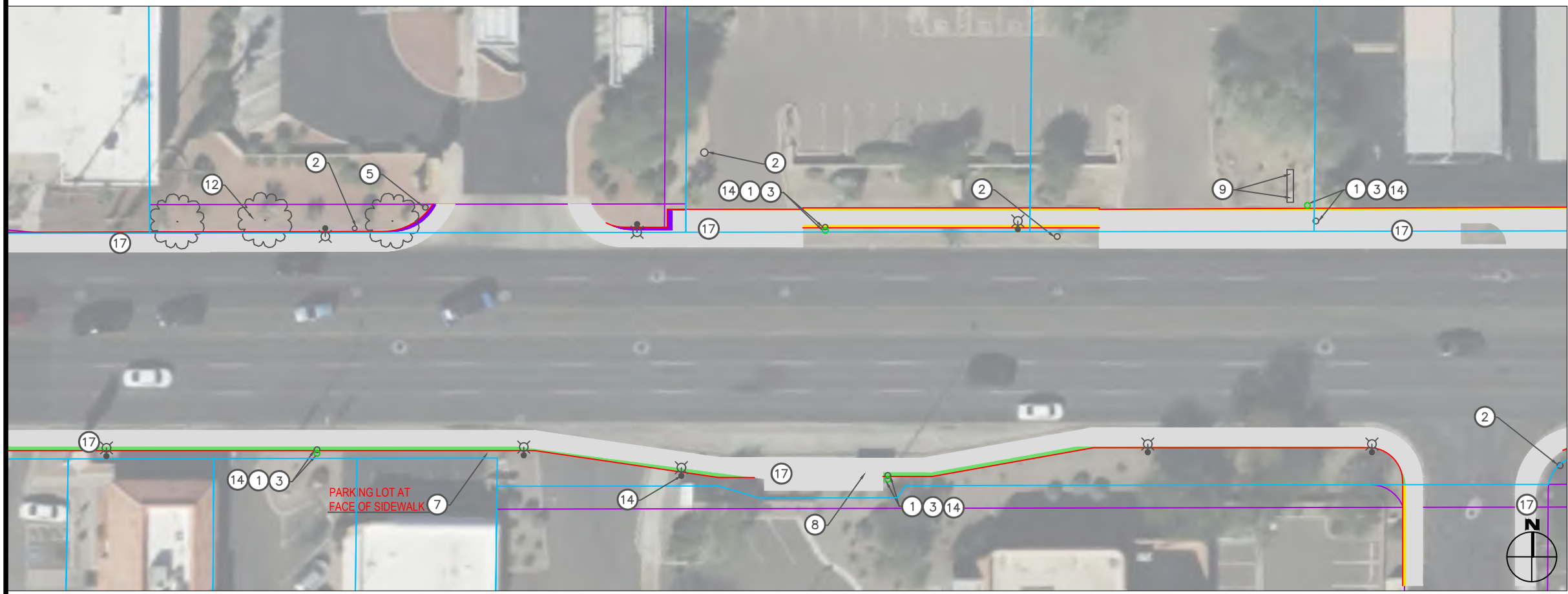
SHEET ID  
0



**DRAFT**



McDowell Road



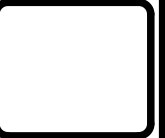
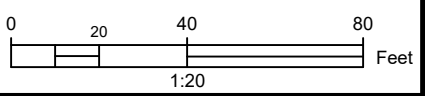
PARKING LOT AT FACE OF SIDEWALK

**Construction Notes**

- ① Existing Streetlight
- ② Existing Fire Hydrant
- ③ Relocate existing utility behind new sidewalk offset
- ④ Existing Traffic Signal Cabinet
- ⑤ Existing Water Main
- ⑥ Existing Concrete Utility Box
- ⑦ Potential Private Infrastructure Conflict, description per plan
- ⑧ Existing Bus Stop
- ⑨ Existing Irrigation Box
- ⑩ Proposed Signal Improvements
- ⑫ Proposed Box Tree, typical
- ⑭ Pedestrian Scale Light
- ⑰ Existing Sidewalk

**Quantities**

- ① ③ 4
- ② ③ 0
- ④ ③ 0
- ⑤ ③ 0
- ⑦ 1
- ⑩ 1
- ⑪ 0
- ⑫ 5
- ⑭ 21
- ⑰ 14,620 sqft
- ① ③ ⑭ 436 sqft (Outside RoW)
- ② ③ ⑭ 738 sqft (Inside RoW)
- ③ ④ ⑤ ⑥ ⑦ ⑧ ⑨ ⑩ ⑪ ⑫ ⑬ ⑭ ⑮ ⑯ ⑰ 131 sqft (Inside Easement)



**Michael Baker  
INTERNATIONAL**

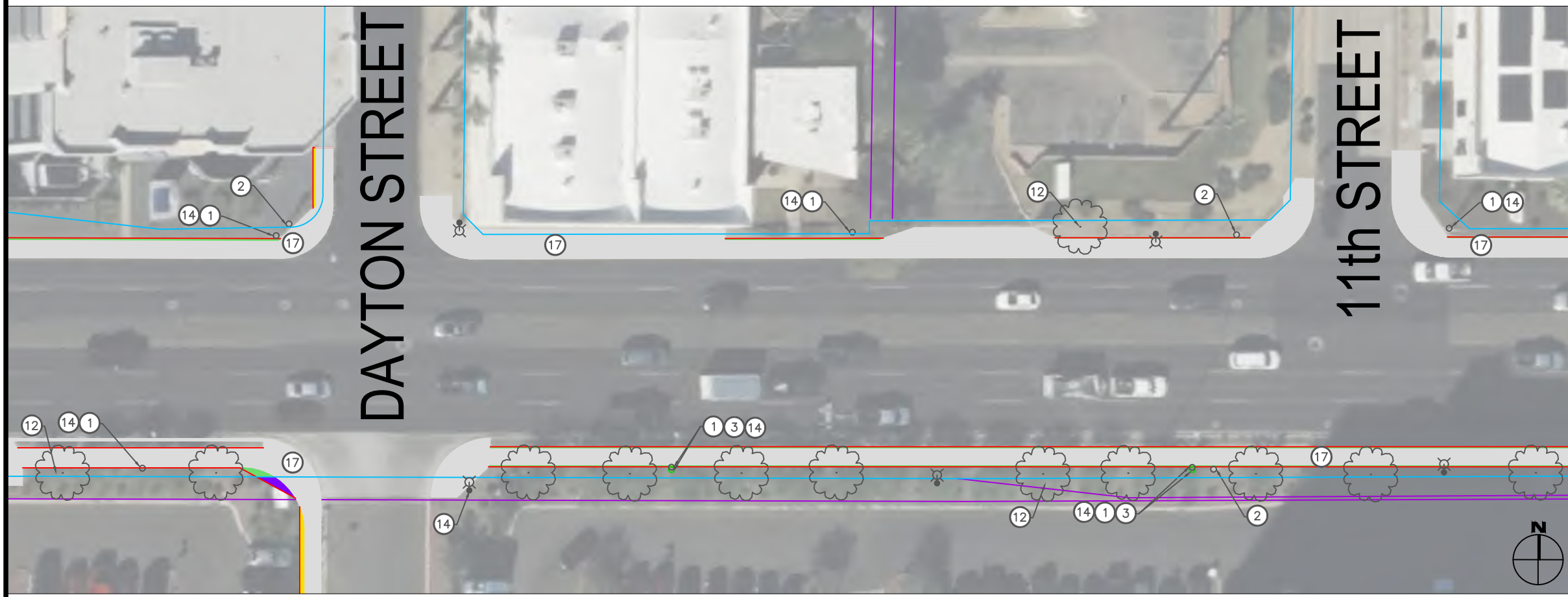
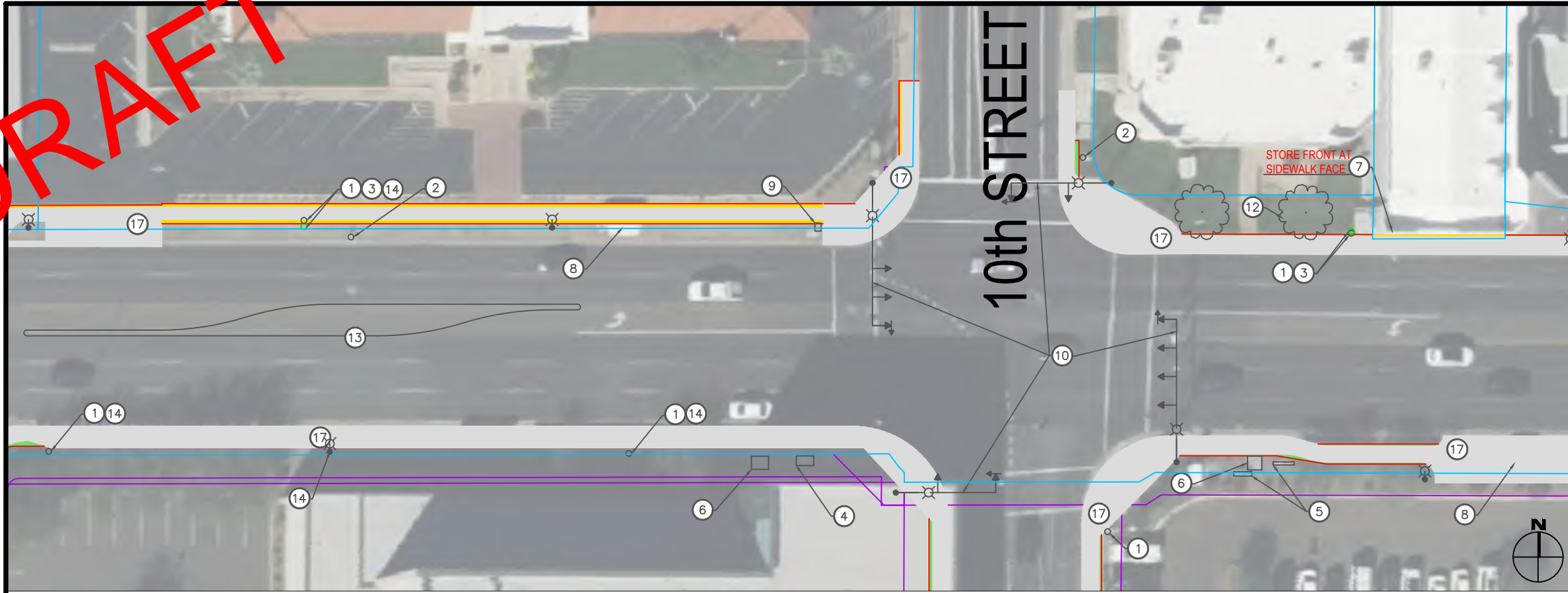
DESIGNED BY: SS	ISSUE DATE: 5/6/17
DRAWN BY: SS	SOLICITATION NO.:
CHECKED BY: JF	CONTRACT NO.:
SUBMITTED BY: JF	SIZE:

**7ft Sidewalk**

SHEET ID  
**1**



**DRAFT**



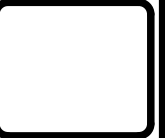
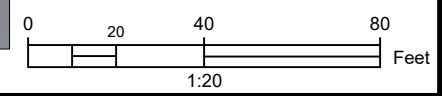
**Construction Notes**

- ① Existing Streetlight
- ② Existing Fire Hydrant
- ③ Relocate existing utility behind new sidewalk offset
- ④ Existing Traffic Signal Cabinet
- ⑤ Existing Water Main
- ⑥ Existing Concrete Utility Box
- ⑦ Potential Private Infrastructure Conflict, description per plan
- ⑧ Existing Bus Stop
- ⑨ Existing Irrigation Box
- ⑩ Proposed Signal Improvements
- ⑫ Proposed Box Tree, typical
- ⑬ Candidate Median Improvements
- ⑭ Pedestrian Scale Light
- ⑰ Existing Sidewalk

**Quantities**

① ③	4	⑬	1
② ③	0	⑭	20
④ ③	0	⑰	17,691 sqft
⑤ ③	0		
⑦	1		
⑩	1		
⑪	0		
⑫	14		

- 690 sqft (Outside RoW)
- 659 sqft (Inside RoW)
- 29 sqft (Inside Easement)



**Michael Baker**  
**INTERNATIONAL**

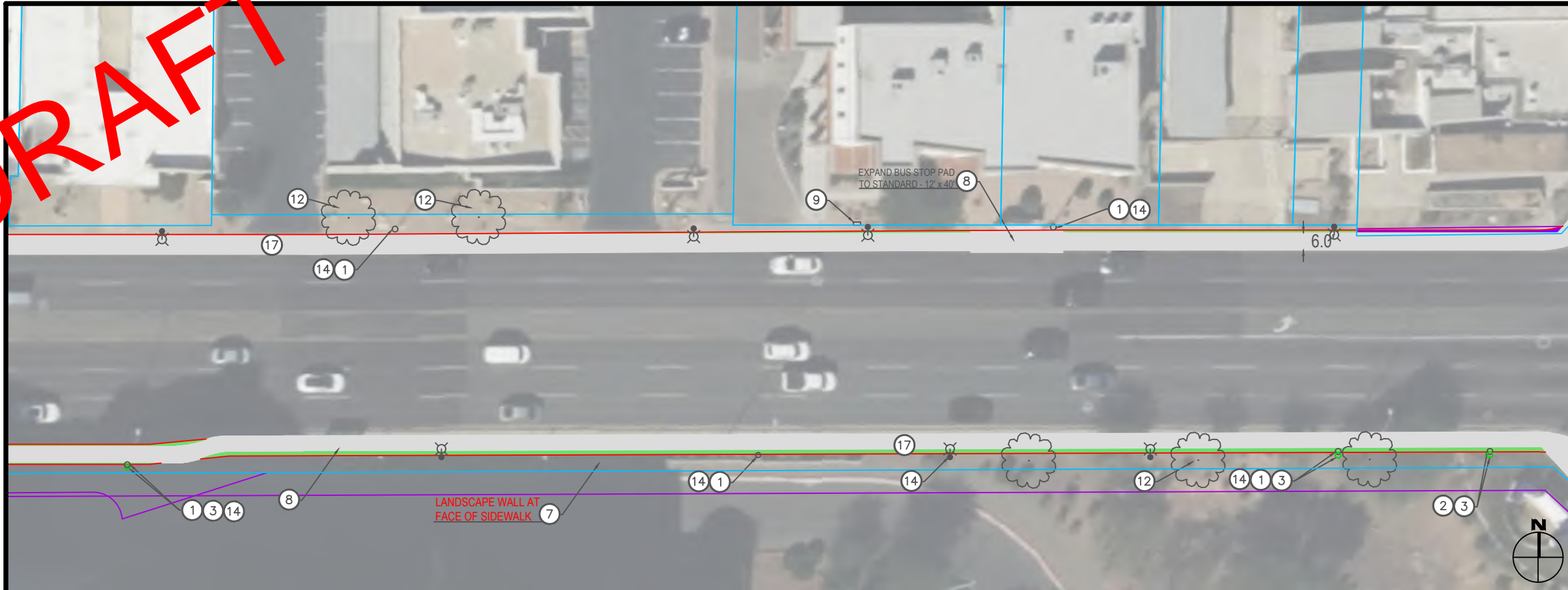
DESIGNED BY: SS	ISSUE DATE: 5/6/17	SOLICITATION NO.:	
DRAWN BY: SS		CONTRACT NO.:	
CHECKED BY: JF		SUBMITTED BY: JF	
		SIZE:	

**7ft Sidewalk**

SHEET ID  
**2**



**DRAFT**



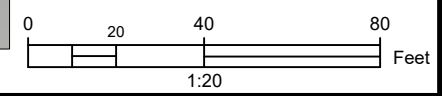
**Construction Notes**

- ① Existing Streetlight
- ② Existing Fire Hydrant
- ③ Relocate existing utility behind new sidewalk offset
- ④ Existing Traffic Signal Cabinet
- ⑤ Existing Water Main
- ⑥ Existing Concrete Utility Box
- ⑦ Potential Private Infrastructure Conflict, description per plan
- ⑧ Existing Bus Stop
- ⑨ Existing Irrigation Box
- ⑩ Proposed signal improvements
- ⑫ Proposed Box Tree, typical
- ⑬ Candidate median improvements
- ⑭ Pedestrian Scale Light
- ⑰ Existing Sidewalk

**Quantities**

- ① ③ 3
- ② ③ 2
- ④ ③ 1
- ⑤ ③ 0
- ⑦ 1
- ⑩ 1
- ⑪ 0
- ⑫ 5
- ⑬ 1
- ⑭ 21
- ⑰ 14,458 sqft
- ⑬ 1
- ⑭ 21
- ⑰ 14,458 sqft

- 16 sqft (Outside RoW)
- 1,751 sqft (Inside RoW)
- 65 sqft (Inside Easement)



**Michael Baker INTERNATIONAL**

DESIGNED BY: SS	ISSUE DATE: 5/6/17
DRAWN BY: SS	SOLICITATION NO.:
CHECKED BY: JF	CONTRACT NO.:
SUBMITTED BY: JF	SIZE:

**7ft Sidewalk**

SHEET ID  
**3**

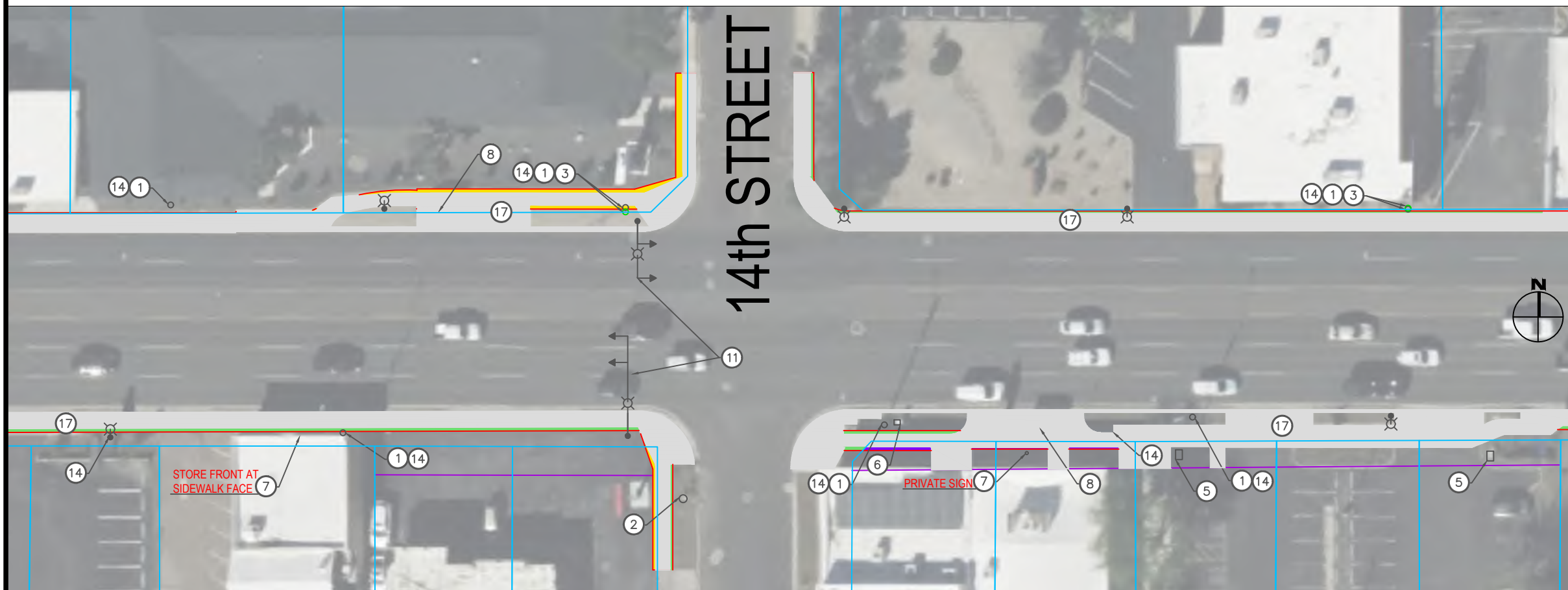


**DRAFT**

**13th STREET**



**14th STREET**

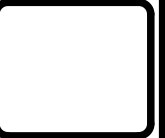
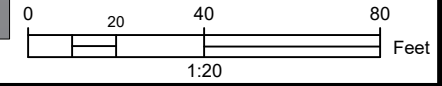


**Construction Notes**

- ① Existing Streetlight
- ② Existing Fire Hydrant
- ③ Relocate existing utility behind new sidewalk offset
- ④ Existing Traffic Signal Cabinet
- ⑤ Existing Water Main
- ⑥ Existing Concrete Utility Box
- ⑦ Potential Private Infrastructure Conflict, description per plan
- ⑧ Existing Bus Stop
- ⑨ Existing Irrigation Box
- ⑩ Proposed signal improvements
- ⑪ Proposed HAWK
- ⑫ Proposed Box Tree, typical
- ⑬ Candidate median improvements
- ⑭ Pedestrian Scale Light
- ⑰ Existing Sidewalk

**Quantities**

- ① ③ 3      ⑪ 1
- ② ③ 1      ⑭ 22
- ④ ③ 0      ⑰ 17,512 sqft
- ⑤ ③ 0
- ⑦ 4
- ⑩ 0
- ⑫ 514 sqft (Outside RoW)
- ⑬ 994 sqft (Inside RoW)
- ⑭ 53 sqft (Inside Easement)



**Michael Baker  
INTERNATIONAL**

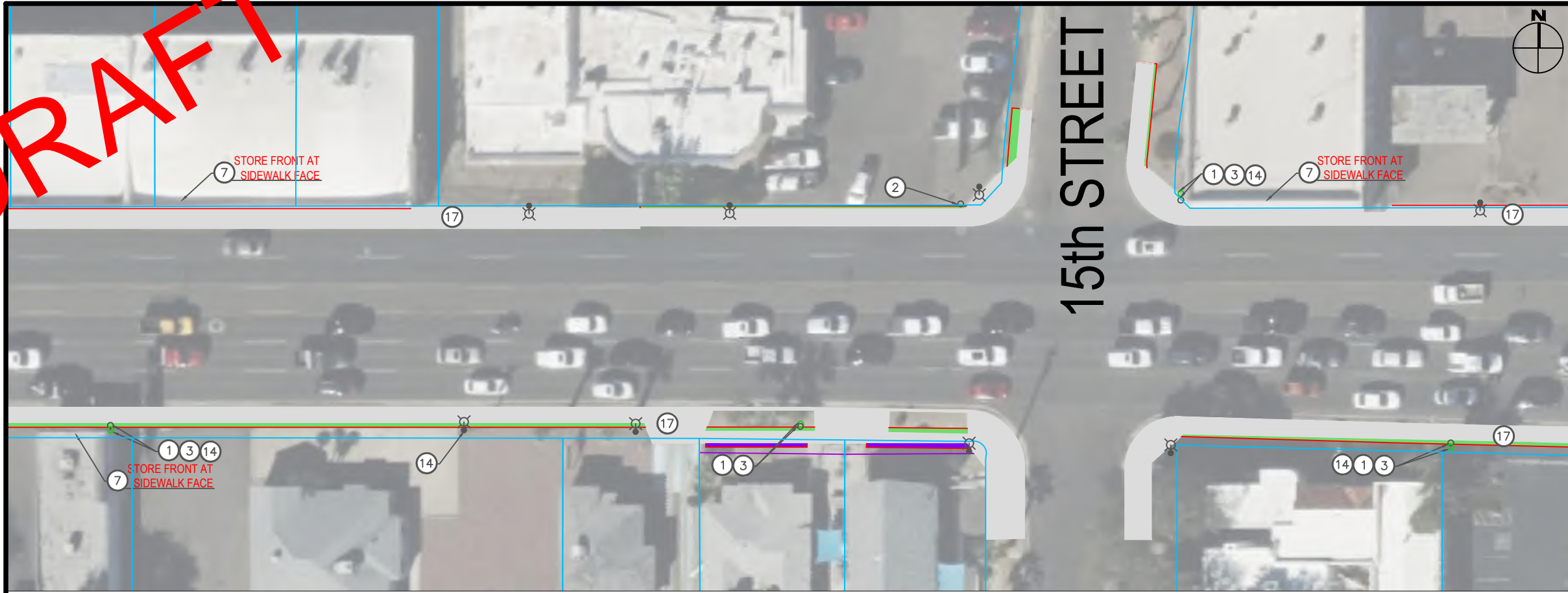
DESIGNED BY: SS	ISSUE DATE: 5/6/17
DRAWN BY: SS	SOLICITATION NO.:
CHECKED BY: JF	CONTRACT NO.:
SUBMITTED BY: JF	SIZE:

**7ft Sidewalk**

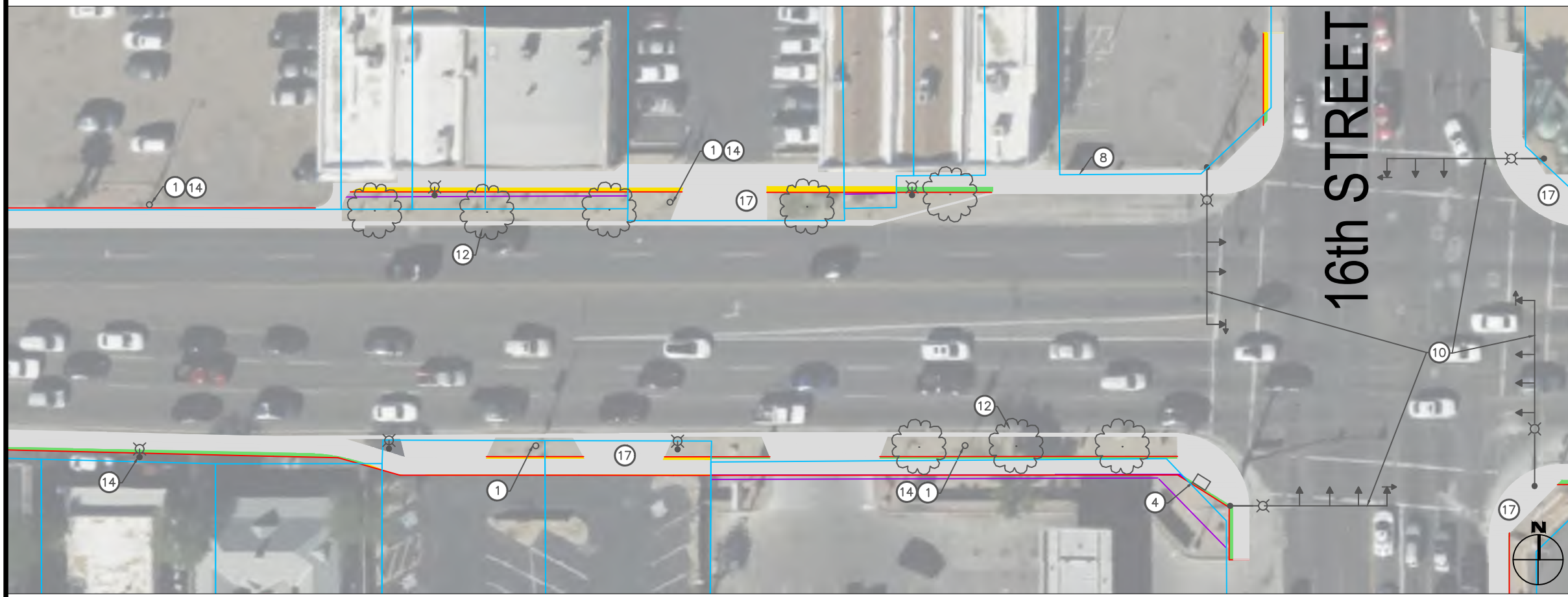
SHEET ID  
**4**



**DRAFT**



15th STREET



16th STREET



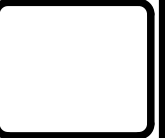
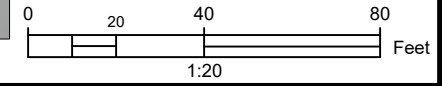
**Construction Notes**

- ① Existing Streetlight
- ② Existing Fire Hydrant
- ③ Relocate existing utility behind new sidewalk offset
- ④ Existing Traffic Signal Cabinet
- ⑤ Existing Water Main
- ⑥ Existing Concrete Utility Box
- ⑦ Potential Private Infrastructure Conflict, description per plan
- ⑧ Existing Bus Stop
- ⑨ Existing Irrigation Box
- ⑩ Proposed signal improvements
- ⑫ Proposed Box Tree, typical
- ⑭ Pedestrian Scale Light
- ⑰ Existing Sidewalk

**Quantities**

- ① ③ 4      ⑫ 8
- ② ③ 0      ⑭ 20
- ④ ③ 0      ⑰ 17,151 sqft
- ⑤ ③ 0
- ⑦ 3
- ⑩ 1
- ⑪ 0

- 426 sqft (Outside RoW)
- 1155 sqft (Inside RoW)
- 96 sqft (Inside Easement)



**Michael Baker**  
**INTERNATIONAL**

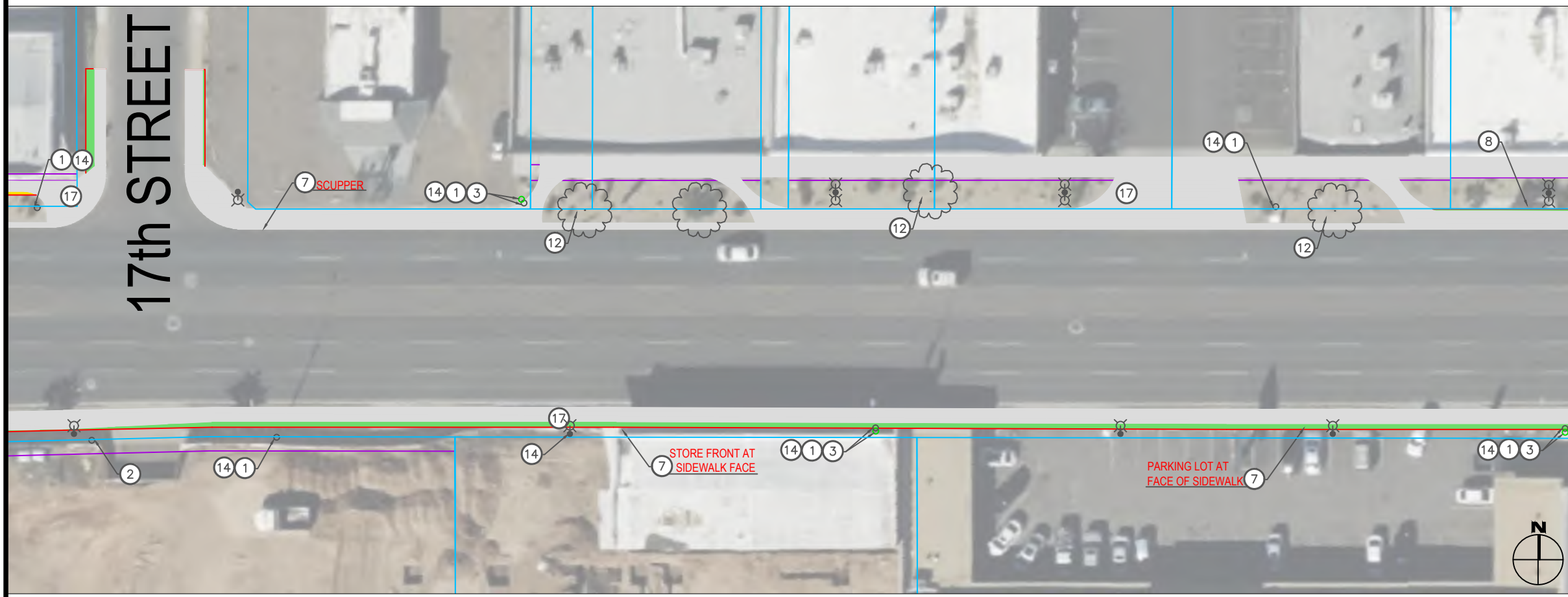
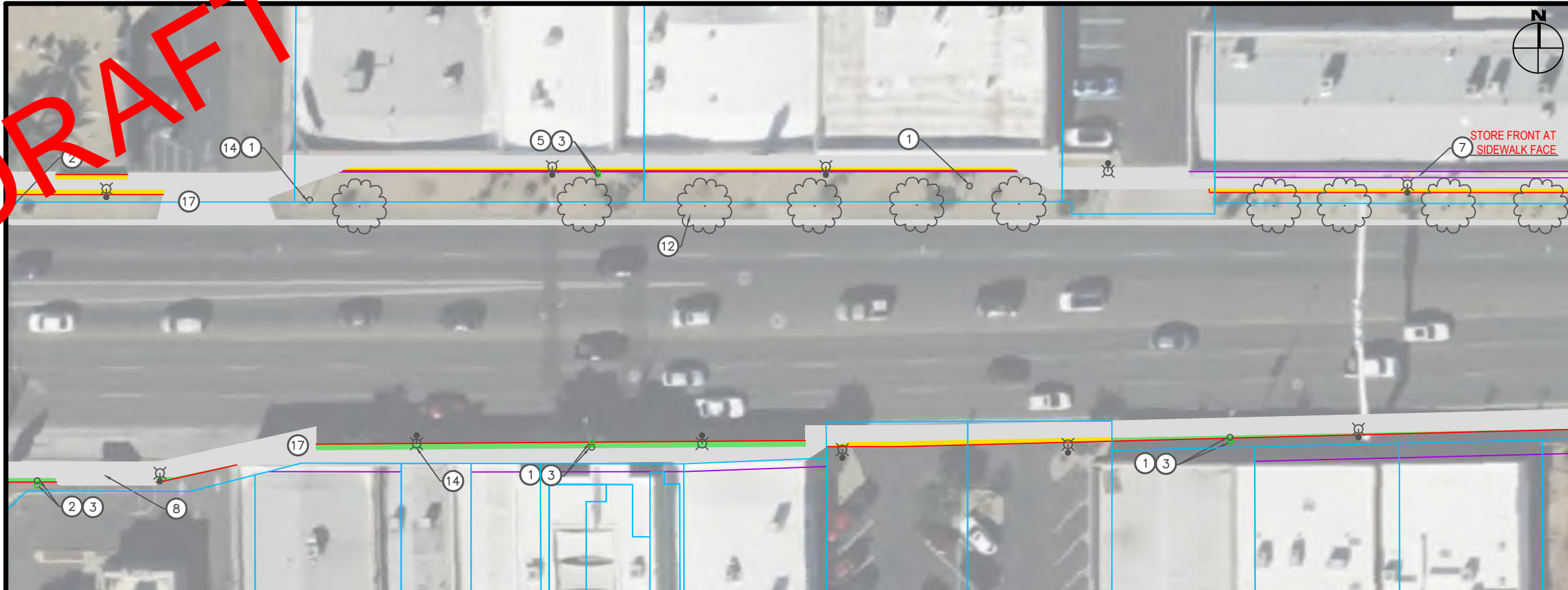
DESIGNED BY: SS	ISSUE DATE: 5/6/23
DRAWN BY: SS	SOLICITATION NO.:
CHECKED BY: JF	CONTRACT NO.:
SUBMITTED BY: JF	SIZE:

**7ft Sidewalk**

SHEET ID  
**5**



**DRAFT**

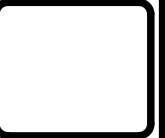
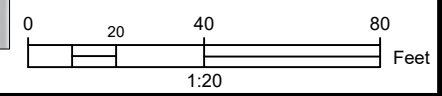


**Construction Notes**

- ① Existing Streetlight
- ② Existing Fire Hydrant
- ③ Relocate existing utility behind new sidewalk offset
- ④ Existing Traffic Signal Cabinet
- ⑤ Existing Water Main
- ⑥ Existing Concrete Utility Box
- ⑦ Potential Private Infrastructure Conflict, description per plan
- ⑧ Existing Bus Stop
- ⑨ Existing Irrigation Box
- ⑩ Proposed signal improvements
- ⑫ Proposed Box Tree, typical
- ⑭ Pedestrian Scale Light
- ⑰ Existing Sidewalk

**Quantities**

- ① ③ 5
  - ② ③ 1
  - ④ ③ 0
  - ⑤ ③ 1
  - ⑦ 4
  - ⑩ 0
  - ⑪ 0
  - ⑫ 14
  - ⑭ 26
  - ⑰ 17,385 sqft
- 632 sqft (Outside RoW)  
 1551 sqft (Inside Row)



**Michael Baker**  
INTERNATIONAL

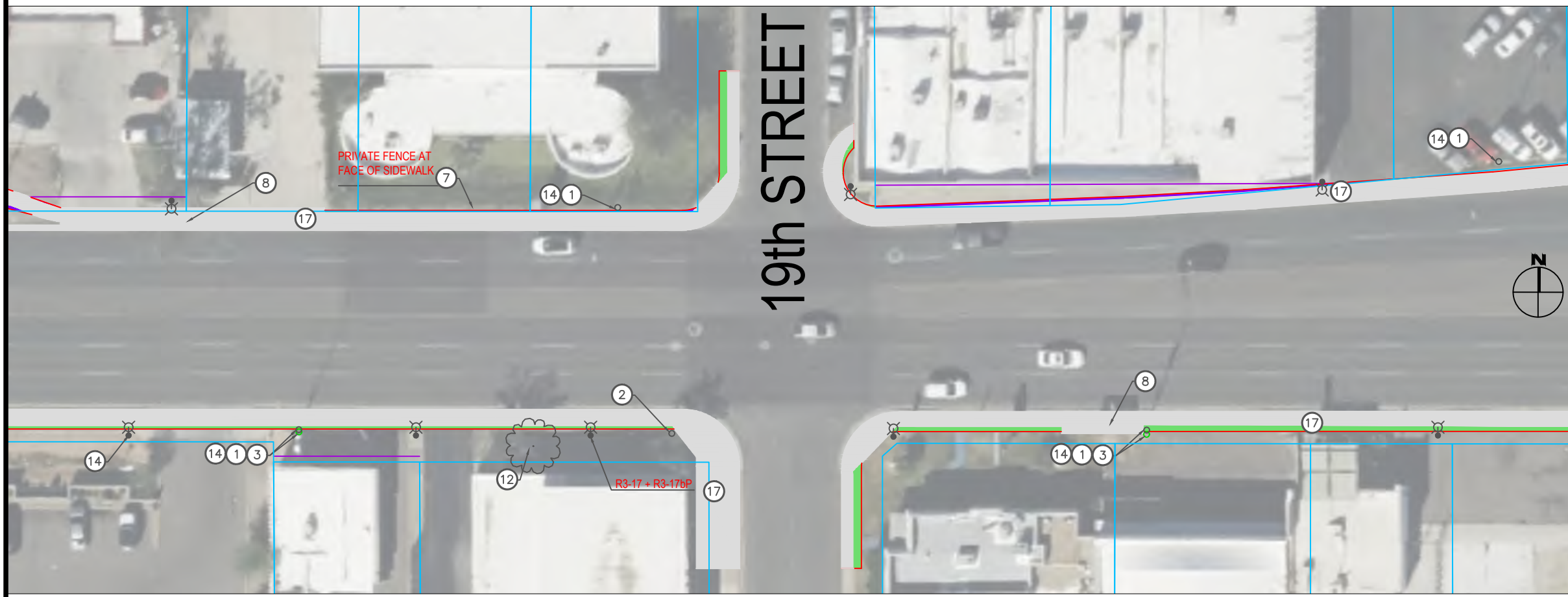
DESIGNED BY: SS	ISSUE DATE: 5/6/23
DRAWN BY: SS	SOLICITATION NO.:
CHECKED BY: JF	CONTRACT NO.:
SUBMITTED BY: JF	SIZE:

**7ft Sidewalk**

SHEET ID  
**6**



**DRAFT**

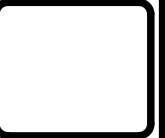
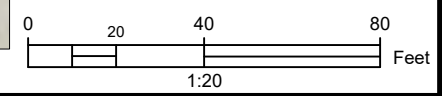


**Construction Notes**

- ① Existing Streetlight
- ② Existing Fire Hydrant
- ③ Relocate existing utility behind new sidewalk offset
- ④ Existing Traffic Signal Cabinet
- ⑤ Existing Water Main
- ⑥ Existing Concrete Utility Box
- ⑦ Potential Private Infrastructure Conflict, description per plan
- ⑧ Existing Bus Stop
- ⑨ Existing Irrigation Box
- ⑩ Proposed signal improvements
- ⑪ Proposed HAWK
- ⑫ Proposed Box Tree, typical
- ⑭ Pedestrian Scale Light
- ⑰ Existing Sidewalk

**Quantities**

① ③	4	⑫	3
② ③	0	⑭	24
④ ③	0	⑰	16,465 sqft
⑤ ③	0		
⑦	6		
⑩	0		
⑪	1		
	403 sqft (Outside RoW)		
	1597 sqft (Inside Easement)		



**Michael Baker**  
**INTERNATIONAL**

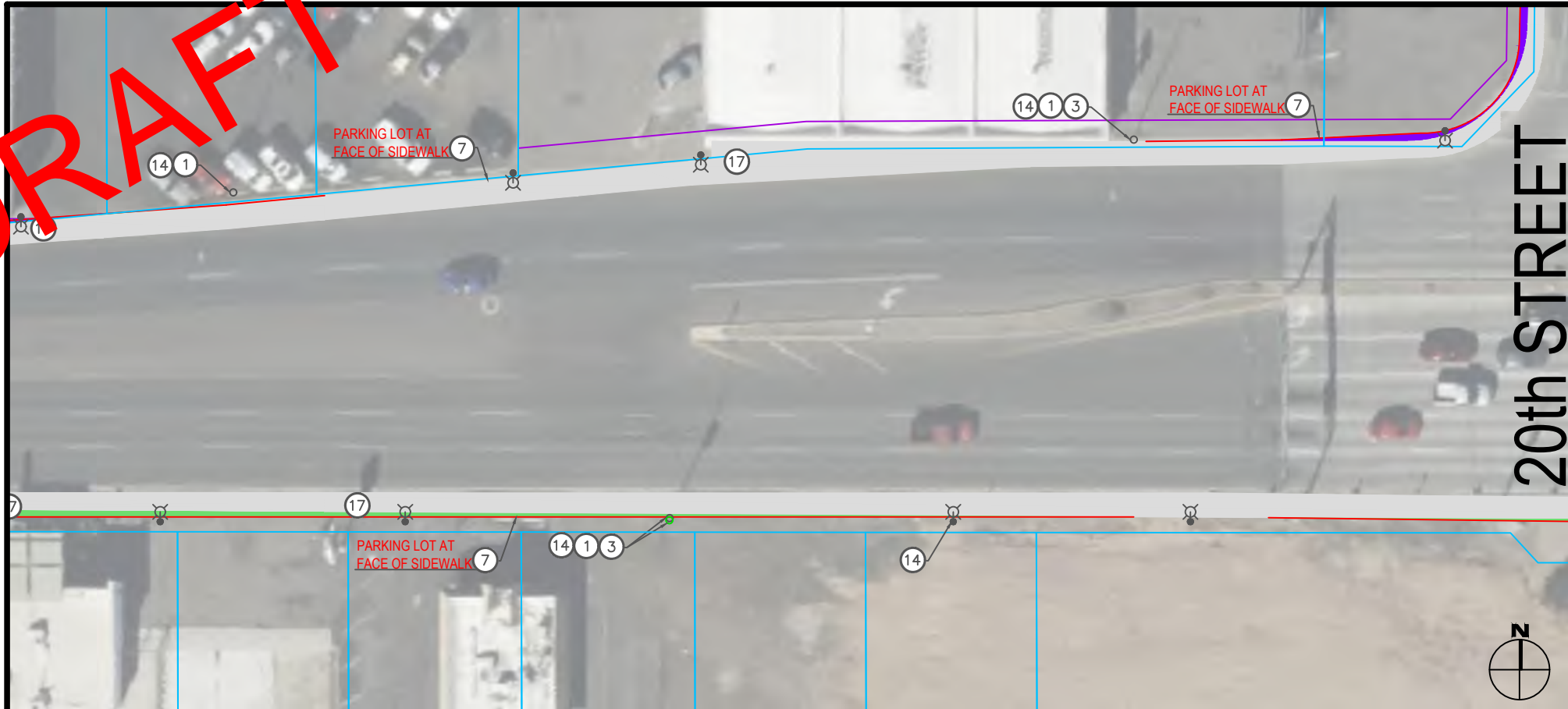
DESIGNED BY: SS	ISSUE DATE: 5/6/23
DRAWN BY: SS	SOLICITATION NO.:
CHECKED BY: JF	CONTRACT NO.:
SUBMITTED BY: JF	SIZE:

**7ft Sidewalk**

SHEET ID  
**7**



**DRAFT**

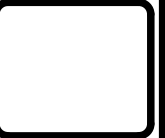
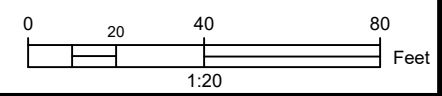


**Construction Notes**

- ① Existing Streetlight
- ② Existing Fire Hydrant
- ③ Relocate existing utility behind new sidewalk offset
- ④ Existing Traffic Signal Cabinet
- ⑤ Existing Water Main
- ⑥ Existing Concrete Utility Box
- ⑦ Potential Private Infrastructure Conflict, description per plan
- ⑧ Existing Bus Stop
- ⑨ Existing Irrigation Box
- ⑩ Proposed signal improvements
- ⑭ Pedestrian Scale Light
- ⑰ Existing Sidewalk

**Quantities**

- ① ③ 1      ⑭ 8
- ② ③ 0      ⑰ 5,145 sqft
- ④ ③ 0
- ⑤ ③ 0
- ⑦ 3
- ⑩ 0
- ⑪ 0
- ① 0 sqft (Outside RoW)
- ② 180 sqft (Inside RoW)
- ③ 137 sqft (Inside Easement)



**Michael Baker**  
**INTERNATIONAL**

DESIGNED BY: SS	ISSUE DATE: 5/6/23
DRAWN BY: SS	SOLICITATION NO.:
CHECKED BY: JF	CONTRACT NO.:
SUBMITTED BY: JF	SIZE:

**7ft Sidewalk**

SHEET ID  
**8**