



**City of Phoenix**  
STREET TRANSPORTATION DEPARTMENT

# Chandler Boulevard: 27th Avenue to 19th Avenue

# Ahwatukee Village Planning Committee Presentation August 22, 2016

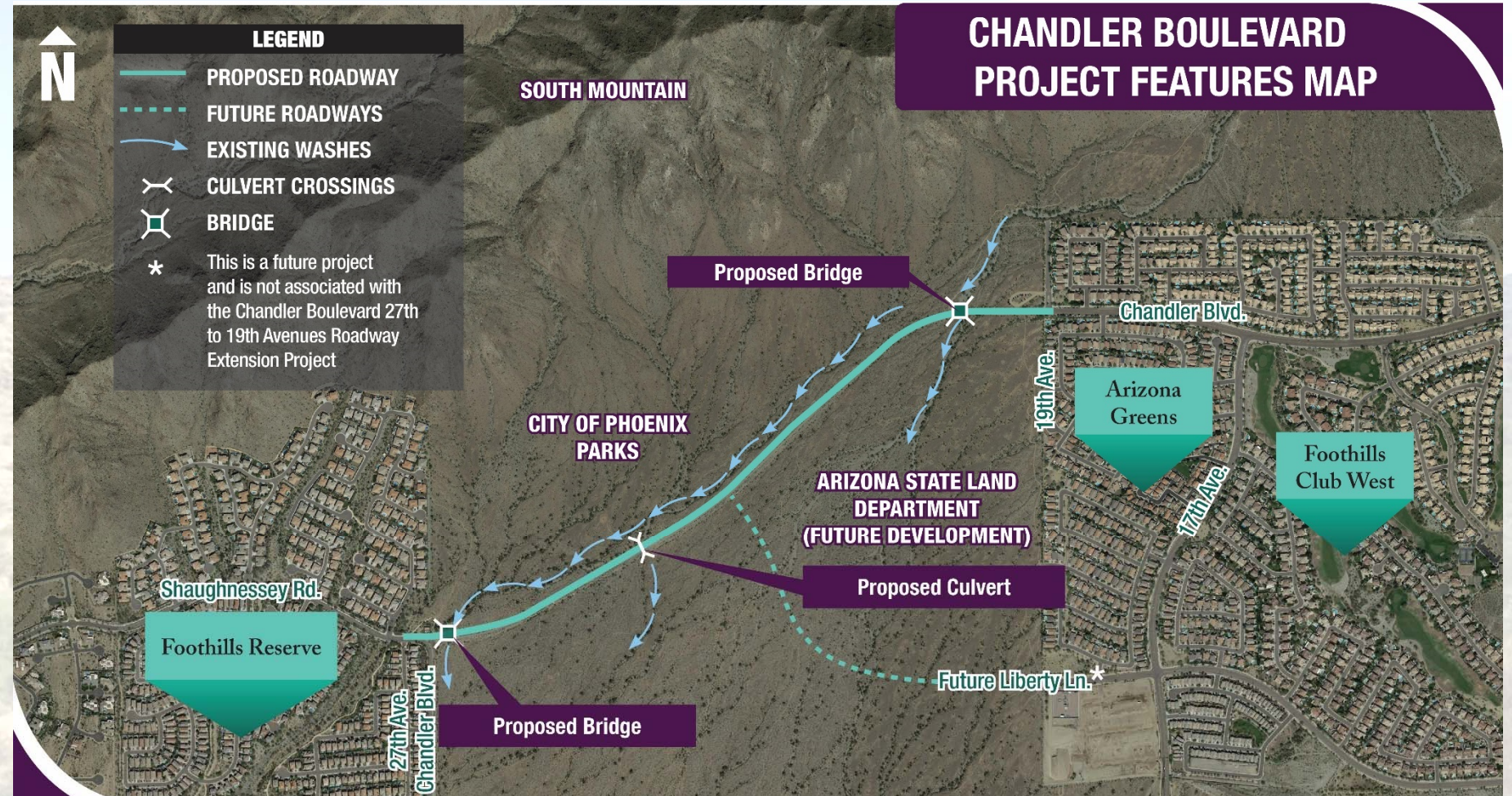




**City of Phoenix**  
STREET TRANSPORTATION DEPARTMENT

# Chandler Boulevard: 27th Avenue to 19th Avenue

## Project Features Overview







**City of Phoenix**  
STREET TRANSPORTATION DEPARTMENT

# Chandler Boulevard: 27th Avenue to 19th Avenue

## Public Outreach Efforts

- Project Information Signs – December 2015
- Ahwatukee Village Planning Committee (AVPC) – 1/25/16
- Project Website updated/Press Release distributed – 1/28/16
- Open House/Public Meeting – 2/16/16
- HOA and Community Meetings:
  - Foothills Club West HOA – 2/18/16
  - Ahwatukee Foothills Chamber of Commerce – 3/4/16
  - Calabrea HOA – 3/14/16
- Traffic Technical Memorandum distributed – April 2016
- Updated Press Release distributed – July 2016



**City of Phoenix**  
STREET TRANSPORTATION DEPARTMENT

# Chandler Boulevard: 27th Avenue to 19th Avenue

## Traffic Technical Memorandum Overview

- Purpose of Study
- Background
- Existing Traffic Conditions
- Interim Traffic Conditions
- Conclusions of Study



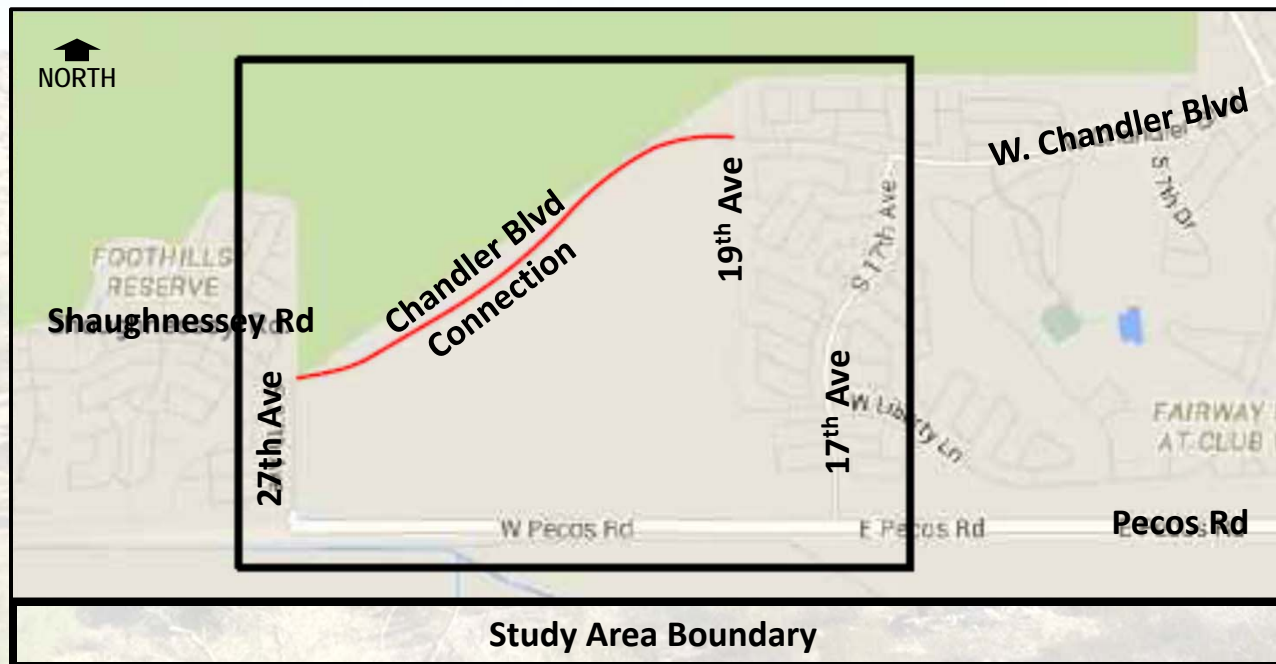


**City of Phoenix**  
STREET TRANSPORTATION DEPARTMENT

# Chandler Boulevard: 27th Avenue to 19th Avenue

## Traffic Technical Memorandum Purpose

- Address community concerns
- Evaluate before and after traffic conditions





City of Phoenix  
STREET TRANSPORTATION DEPARTMENT

# Chandler Boulevard: 27th Avenue to 19th Avenue

## Pecos Road Background

- Classified as Major Arterial in 1999 Street Classification Map
- Destiny of Loop 202 (South Mountain Freeway) was unknown
- Pecos Road built in 2000 to provide regional traffic connectivity



1999 Phoenix Street Classification Map





City of Phoenix  
STREET TRANSPORTATION DEPARTMENT

# Chandler Boulevard: 27th Avenue to 19th Avenue

## Level of Service (LOS)

### Criteria to Measure Traffic

#### Arterial Roadway

- Acceptable Level of Service = D
- Volume 2-lane = 18,485 vpd
- Volume 4-lane = 36,961 vpd

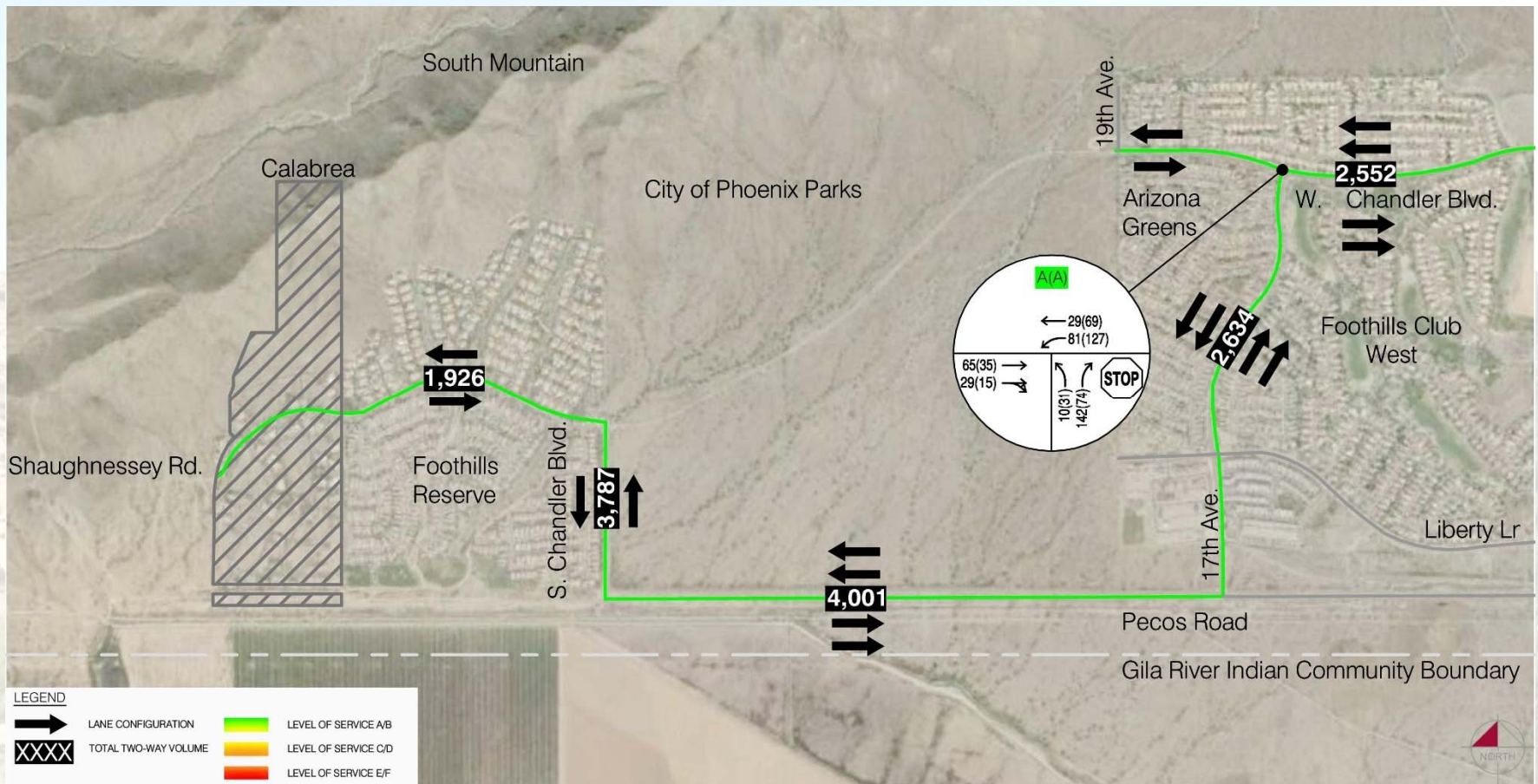
Level of Service	Flow Conditions
A	
B	
C	
D	
E	
F	



**City of Phoenix**  
STREET TRANSPORTATION DEPARTMENT

# Chandler Boulevard: 27th Avenue to 19th Avenue

## Existing Traffic / LOS







**City of Phoenix**  
STREET TRANSPORTATION DEPARTMENT

# Chandler Boulevard: 27th Avenue to 19th Avenue

## Interim Traffic Conditions

- Existing volumes plus planned development
  - Buildout of Calabrea  
(43 SF Dwelling Units)
  - Buildout of Promontory at Foothills West  
(110 SF Dwelling Units)
- Removal of Pecos Rd
- Connect Chandler Blvd, 27<sup>th</sup> Ave to 19<sup>th</sup> Ave

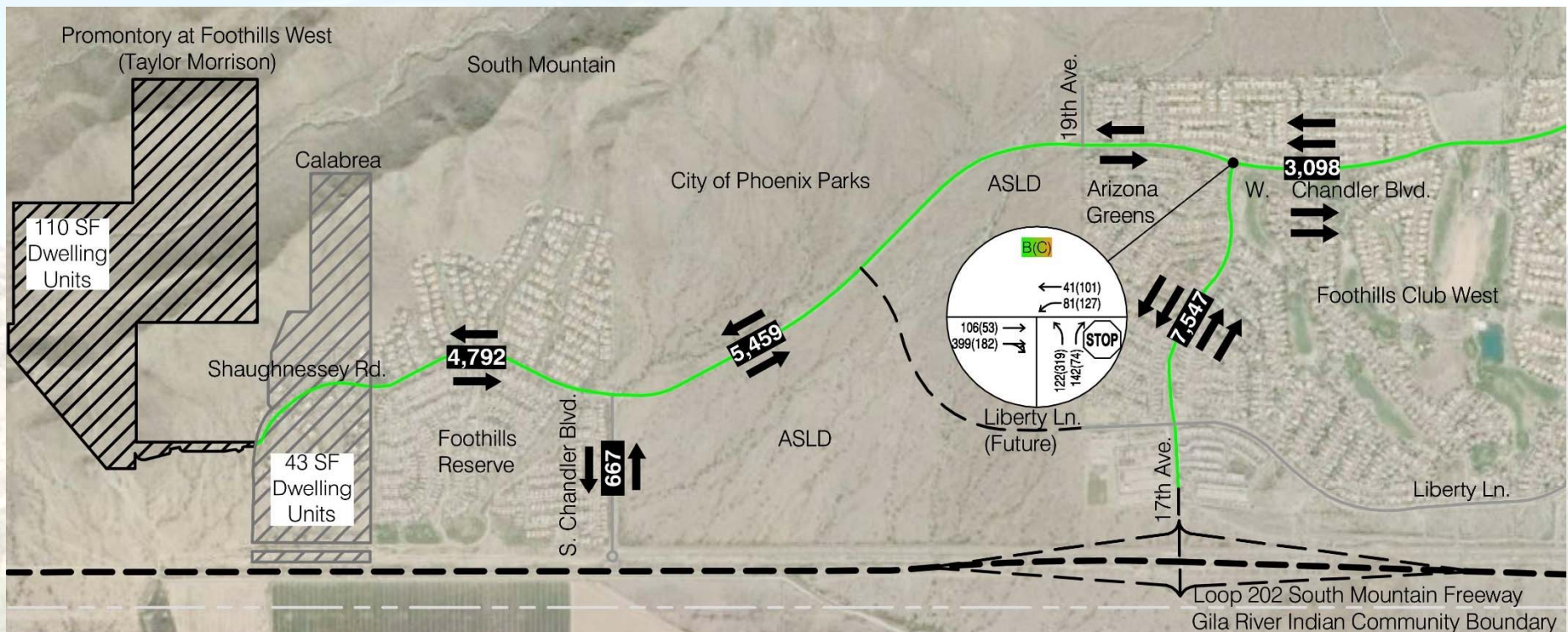




**City of Phoenix**  
STREET TRANSPORTATION DEPARTMENT

# Chandler Boulevard: 27th Avenue to 19th Avenue

## Interim Traffic / LOS







**City of Phoenix**  
STREET TRANSPORTATION DEPARTMENT

# Chandler Boulevard: 27th Avenue to 19th Avenue

## Traffic Technical Memorandum Conclusions

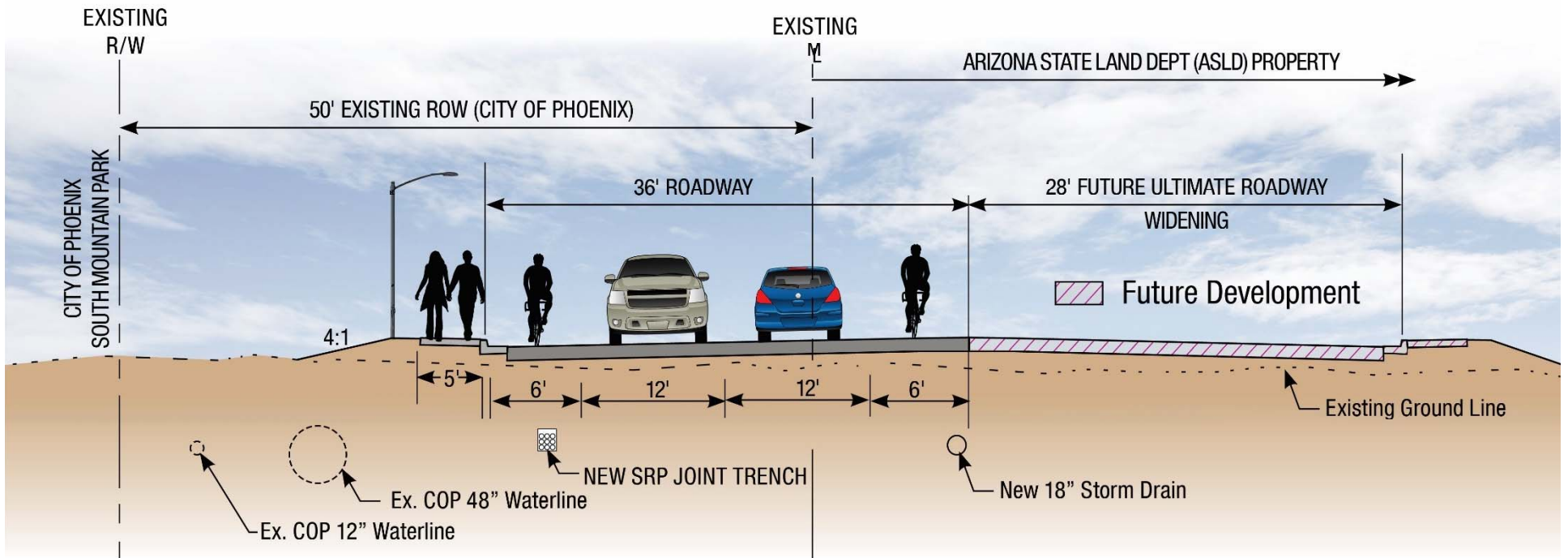
- Existing Traffic Conditions
  - All roads – LOS B or better
  - Intersection at 17<sup>th</sup> Ave/Chandler Blvd – LOS A
  - Pecos Rd – LOS B
- Interim Traffic Conditions:
  - All roads – LOS B or better
  - Intersection at 17<sup>th</sup> Ave/Chandler Blvd – LOS B (AM) / LOS C (PM)
  - New Chandler Blvd (27<sup>th</sup> Ave to 19<sup>th</sup> Ave) – LOS B
- Safety:
  - Travel Time for First Responders
  - Design Features
  - Reviewed by City of Phoenix Police and Fire Departments



City of Phoenix  
STREET TRANSPORTATION DEPARTMENT

# Chandler Boulevard: 27th Avenue to 19th Avenue

## Typical Section



**CHANDLER BOULEVARD TYPICAL SECTION**



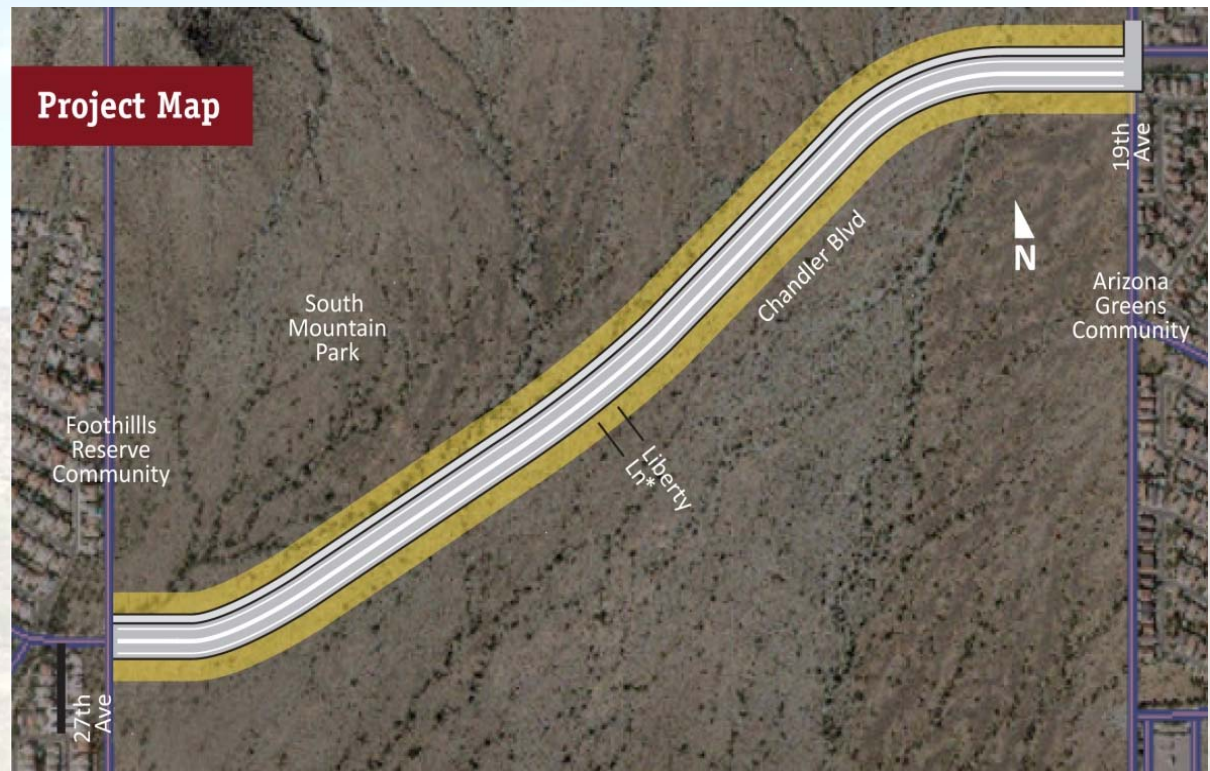


**City of Phoenix**  
STREET TRANSPORTATION DEPARTMENT

# Chandler Boulevard: 27th Avenue to 19th Avenue

## Project Status

- SRP Joint Trench Utility Relocations
- Plant Salvage activities
- Construction Contract
- Material submittals



\*This is a future project and is not associated with the Chandler Boulevard: 27<sup>th</sup> Avenue to 19<sup>th</sup> Avenue roadway extension project.



**City of Phoenix**  
STREET TRANSPORTATION DEPARTMENT

# Chandler Boulevard: 27th Avenue to 19th Avenue

## Project Schedule







**City of Phoenix**  
STREET TRANSPORTATION DEPARTMENT

# Chandler Boulevard: 27th Avenue to 19th Avenue

## Public Outreach

Stay apprised of project progress:

Sign up for project communications at:

[chandlerblvd@gci.az.gov](mailto:chandlerblvd@gci.az.gov)

Visit: [Phoenix.gov/streets](http://Phoenix.gov/streets)

Call 24-hour project hotline:

623-825-3444