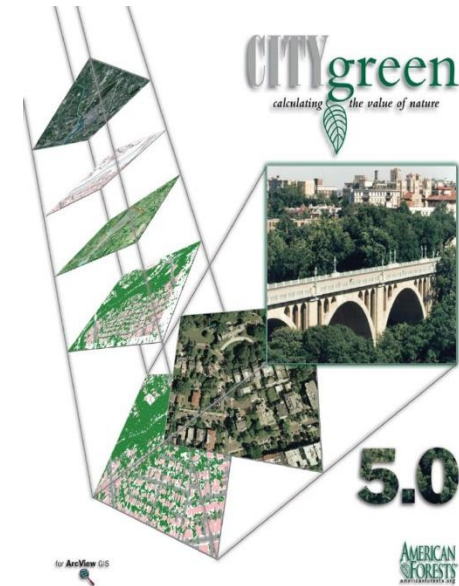




Community ReLeaf



AMERICAN FORESTS
- SINCE 1875 -



A Century of Urban Forest Leadership.

Vibrant cities cultivate thriving urban forests that boost public health, safety, sustainability, and economic growth.

MAKE THE CASE

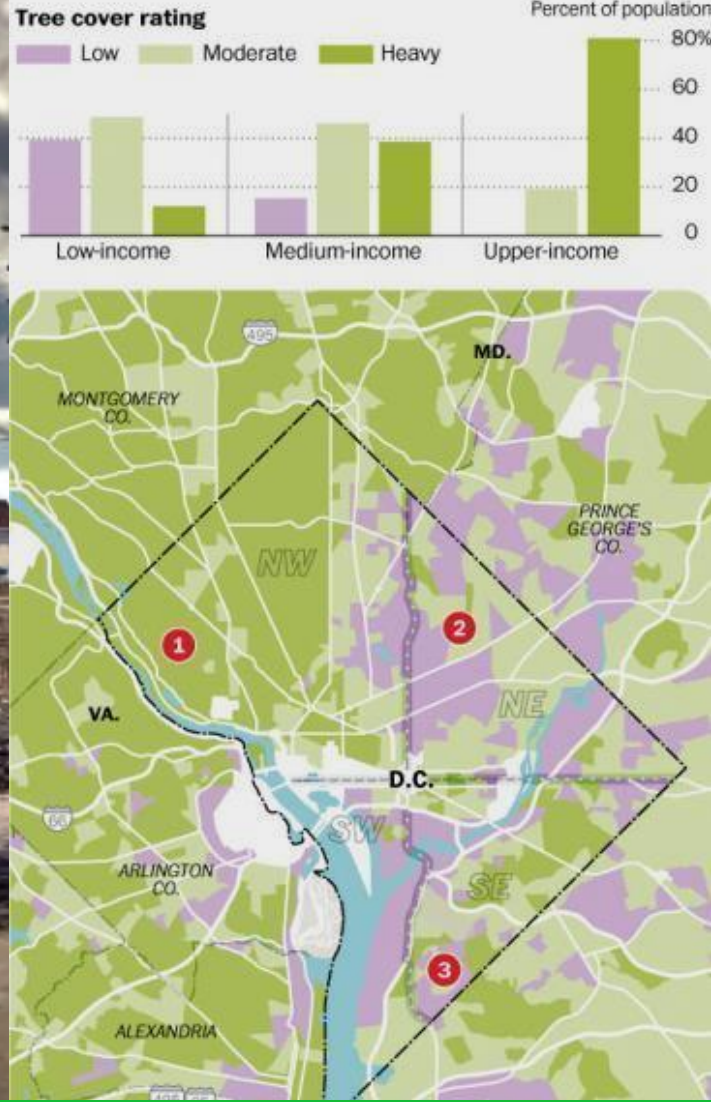
Evidence keeps growing — see research data and real examples of trees' impact.

MAKE IT HAPPEN

Get started in your own community with the Urban Forestry Toolkit.

www.VibrantCitiesLab.com

**Vibrant Cities Lab =
Movement Leadership.**



Our Vision: Tree Equity™.



BY-THE-NUMBERS

Trees and forests in U.S. urban areas annually save **\$4.7 billion** in electricity and **\$3.1 billion** in heating costs.

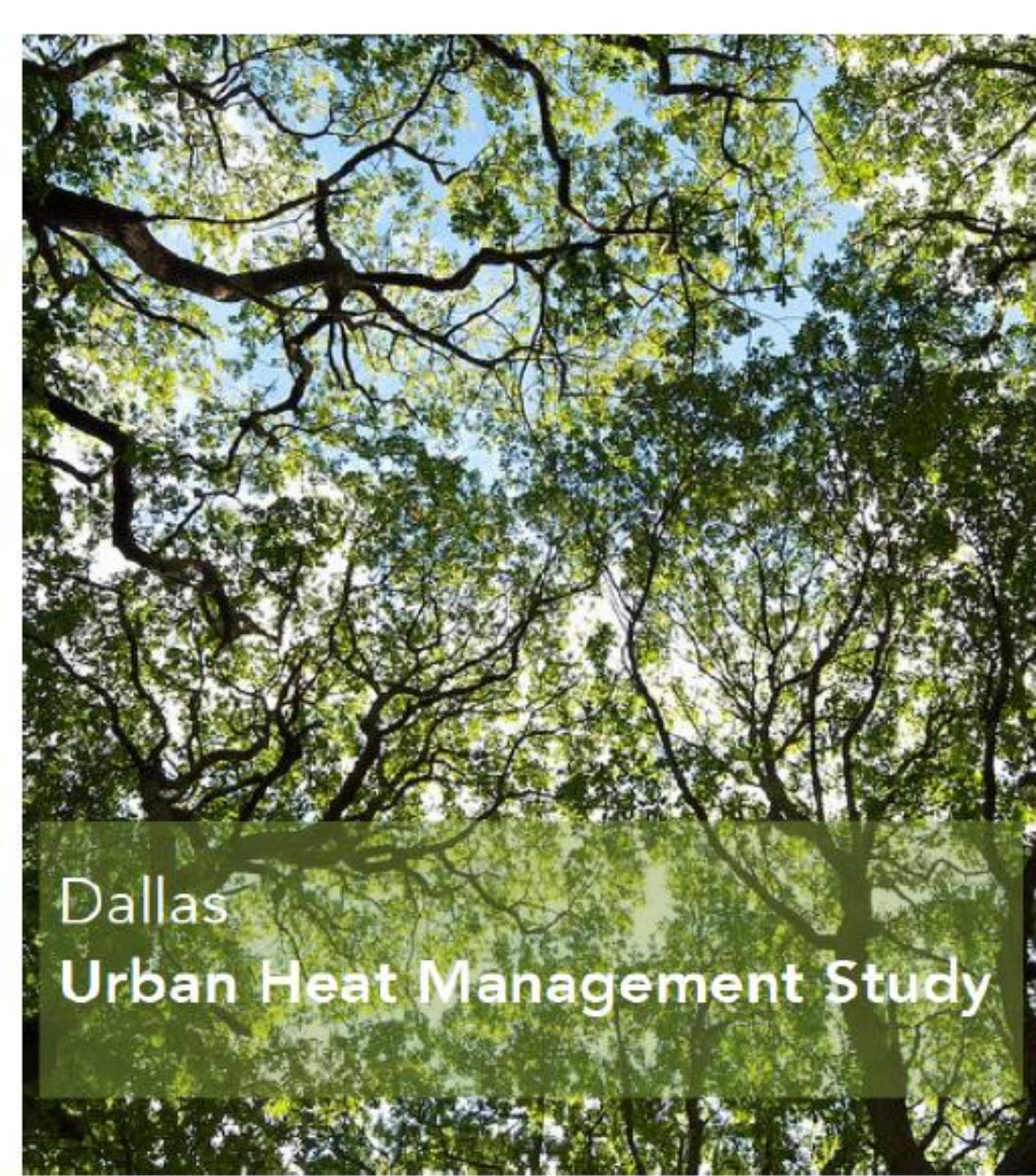


7.2% The average reduction in national residential energy use due to trees is 7.2 percent.



Forest Service
Research and Development
Highlights from the World Leader in Forestry Research

Our Vision: Urban Forests4Climate.



Dallas
Urban Heat Management Study

urban climate lab



AllianceData.

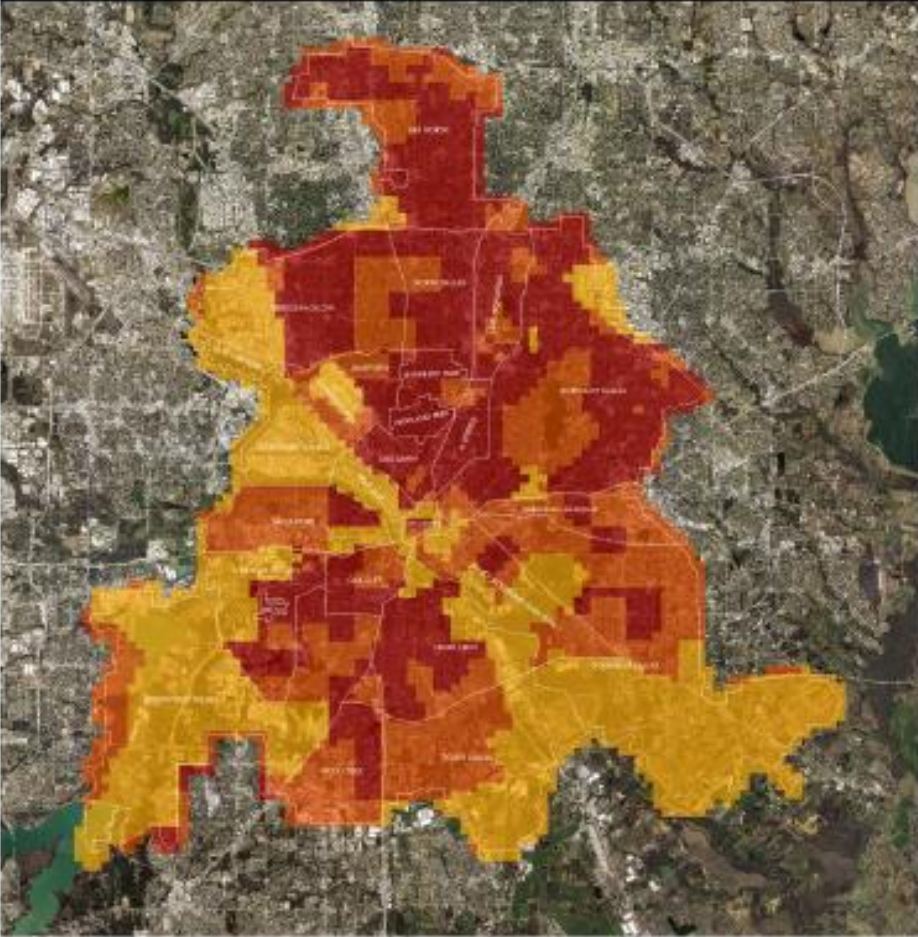


AMERICAN FORESTS

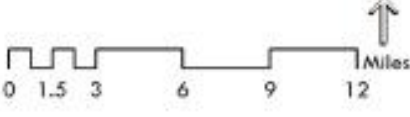
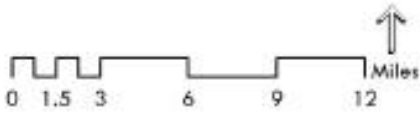
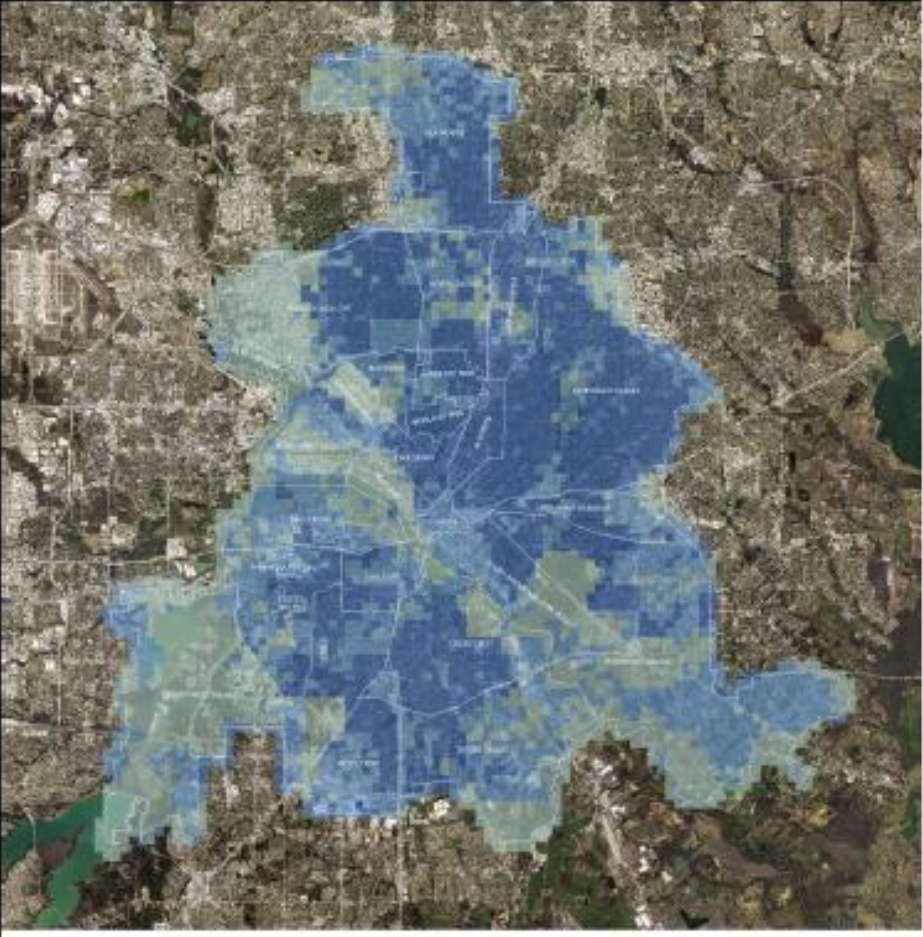


TEXAS TREES
FOUNDATION

UHI-attributable heat mortality 2011



offset mortality under combined strategies scenario (22%)



Community ReLeaf Partnership.





AMERICAN FORESTS



Our ReLeaf Change Model



Western Reserve
Land Conservancy



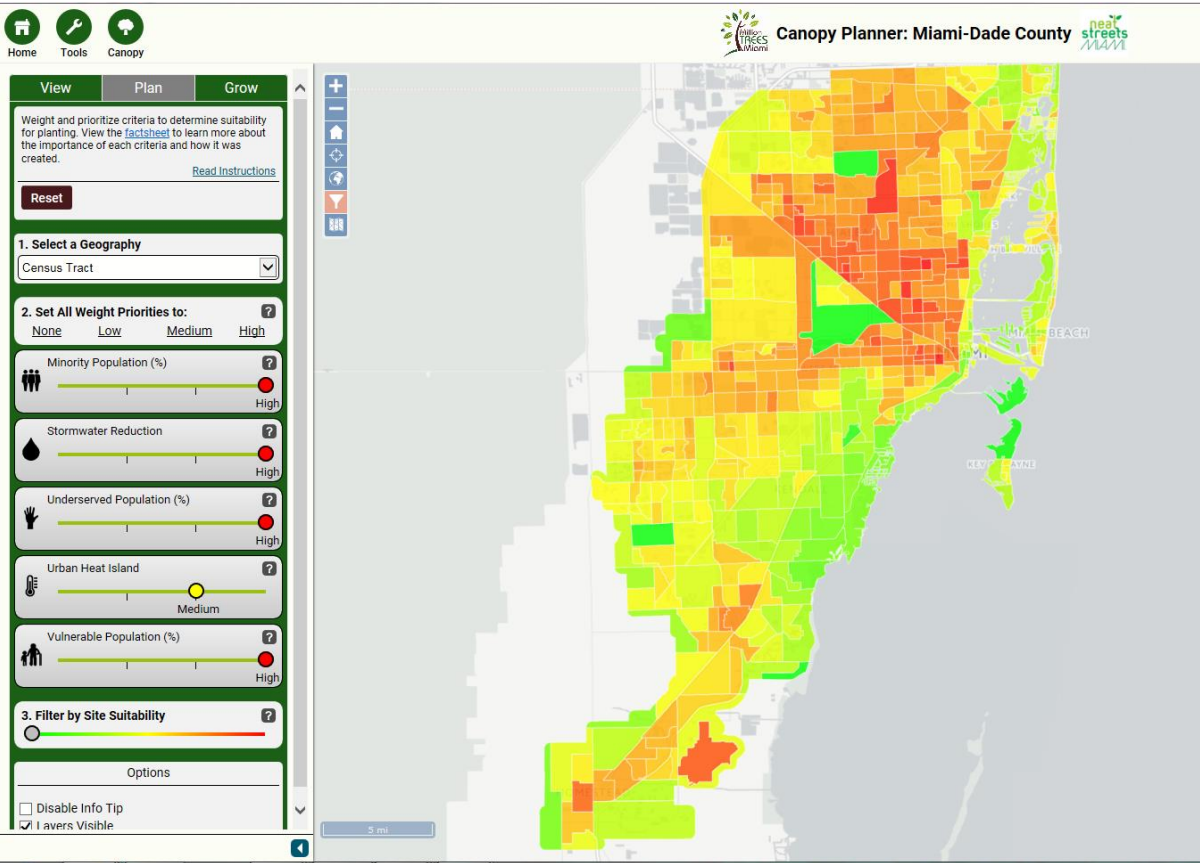
We Build Diverse Partnerships.



SPEAK FOR THE TREES

Boston





MIAMI-DADE COUNTY
URBAN TREE CANOPY ASSESSMENT
JUNE 2016

MIAMI-DADE COUNTY | AMERICAN FORESTS | neat streets MIAMI

Our Planning Approach.

The Department of City Planning invites you to be a part of our
URBAN ECOLOGY PUBLIC MEETINGS

TUESDAY, APRIL 23RD

WEDNESDAY, APRIL 24TH

6:30-8:00 PM

Cathedral of St. Philip,
2744 Peachtree Rd NW,
Atlanta, GA 30305

6:30-8:00 PM

James Orange Recreation Center,
1305 Oakland Drive SW,
Atlanta, GA 30310



Department of
CITY PLANNING



CITY FOREST CREDITS

Help with Policy & Finance.



50 states

45 countries

1,000 projects

60,000,000 trees

We Deliver ReLeaf at Scale.

Eddie Bauer EST. 1920



**Corporate Partners Power
Community ReLeaf!**



Help with Wood Utilization and Innovation.



Connect Career Pathways.

1. Replicate strategies for cultural, organizational, and individual barriers

2. Close gaps between non-profit & for-profits

3. Standardize structure, partnerships, and content of temporary paid tree-care jobs

4. Align local & national credentialing pathways



Tree Equity™: Career Pathways



MAY
04

**2018 Leaf Workshop:
Hurricanes & Our Urban Tree
Canopy**

by The Parks Foundation of Miami-Dade

\$10 – \$20

Trees, Climate and Lessons Learned in Miami-Dade



American Forests [Follow](#)
May 31, 2018 · 3 min read

By Jad Daley, Vice President of Conservation Programs, American Forests & Dennis C. Moss, Miami-Dade County Commissioner—District 9

With hurricane season upon us, and still bruised by last year's damaging and expensive series of storms, people are re-focusing their attention—and anxieties—on the safety and resilience of their communities. Addressing concerns head on, [the recent Miami Tree Week](#) brought together an impressive coalition of public and private partners working to support ongoing urban forest work in one of the nation's most vulnerable counties: Miami-Dade.

Why trees? The answer is simple: Trees are part of the first line of defense for our communities against hurricanes and other extreme weather, particularly intense heat.

It's true that trees picked up a bit of a bad rap after Hurricane Irma. There was a lot of damage associated with downed trees, and a lot of cleanup required.



Miami Tree Week 2018!

Use Communications to Build Momentum.

How Can We Help?

