

City of Phoenix Climate Action Plan Virtual Workshop

Plan de Acción Climático Taller Virtual



C4O
CITIES

All action is climate action.

How you power your home

How you get around

How much waste you produce

Toda acción tiene un efecto climático.

Que tipo de energía se utiliza en tu hogar

Que tipo de transporte utilizas

Que cantidad de basura produces

All action is climate action.

How you power your home

How you get around

How much waste you produce

Toda acción tiene un efecto climático.

Que tipo de energía se utiliza en tu hogar

Que tipo de transporte utilizas

Que cantidad de basura produces



All action is climate action.

How you power your home

How you get around

How much waste you produce

Toda acción tiene un efecto climático.

Que tipo de energía se utiliza en tu hogar

Que tipo de transporte utilizas

Que cantidad de basura produces



All action is climate action.

How you power your home

How you get around

How much waste you produce

Toda acción tiene un efecto climático.

Que tipo de energía se utiliza en tu hogar

Que tipo de transporte utilizas

Que cantidad de basura produces





- 9:00 a.m. Welcome and Introduction / Bienvenida e Introducción.**
- 9:15 a.m. Overview of Heat Goals / Revision de las Metas sobre el Calentamiento**
- 9:35 a.m. Breakout Rooms / Discusión en Grupos**
- 10:15 a.m. Report Out / Reporte a la Comunidad.**
- 10:20 a.m. Next Steps and How to / Sigüientes Pasos y como usar su voz
Use Your Voice**
- 10:30 a.m. Adjourn / Conclusiones y Despedida**

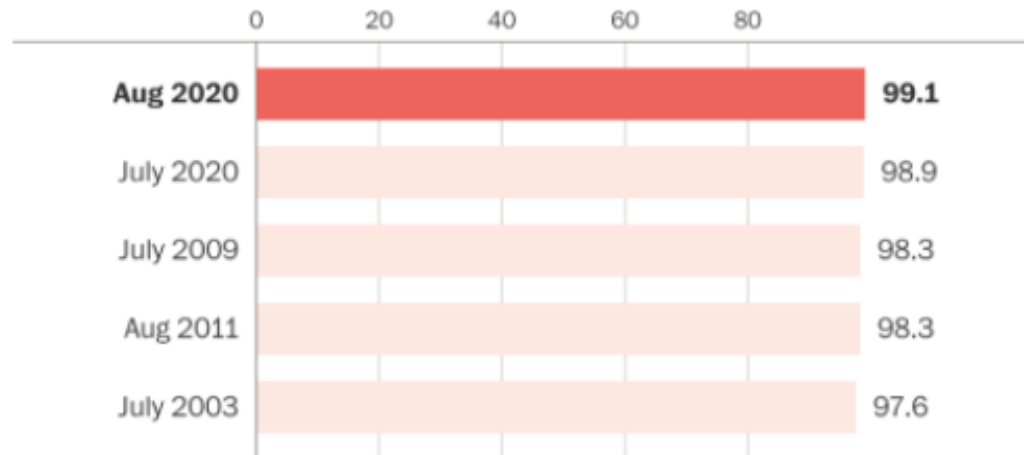


Phoenix feeling like fire

Phoenix se siente que se derrite del calor

Los meses con temperaturas mas altas registradas desde 1896 en Phoenix

The hottest months on record in Phoenix



Average temperatures for each month are shown. Period of record begins in 1896.

Source: ACIS

IAN LIVINGSTON/THE WASHINGTON POST

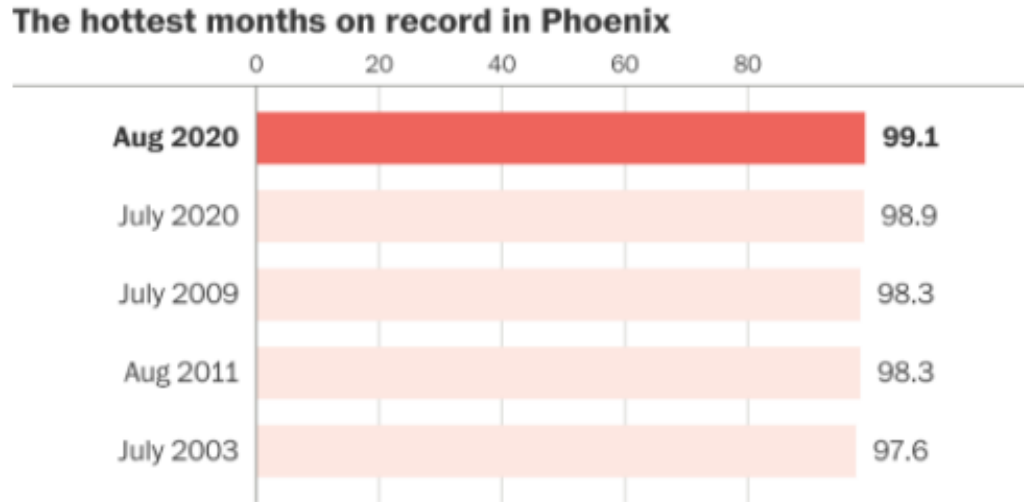
Why does this matter? Porque es importante esta informacion?



Phoenix feeling like fire

Phoenix se siente que se derrite del calor

Los meses con temperaturas mas altas registradas desde 1896 en Phoenix



Average temperatures for each month are shown. Period of record begins in 1896.

Source: ACIS

IAN LIVINGSTON/THE WASHINGTON POST

↑
Temperatures
keep rising

Temperaturas
continuan
incrementando

Why does this matter? Porque es importante esta informacion?



Phoenix feeling like fire

Phoenix se siente que se derrite del calor

Los meses con temperaturas mas altas registradas desde 1896 en Phoenix



Average temperatures for each month are shown. Period of record begins in 1896.

Source: ACIS

IAN LIVINGSTON/THE WASHINGTON POST

↑
Temperatures
keep rising

Temperaturas
continuan
incrementando

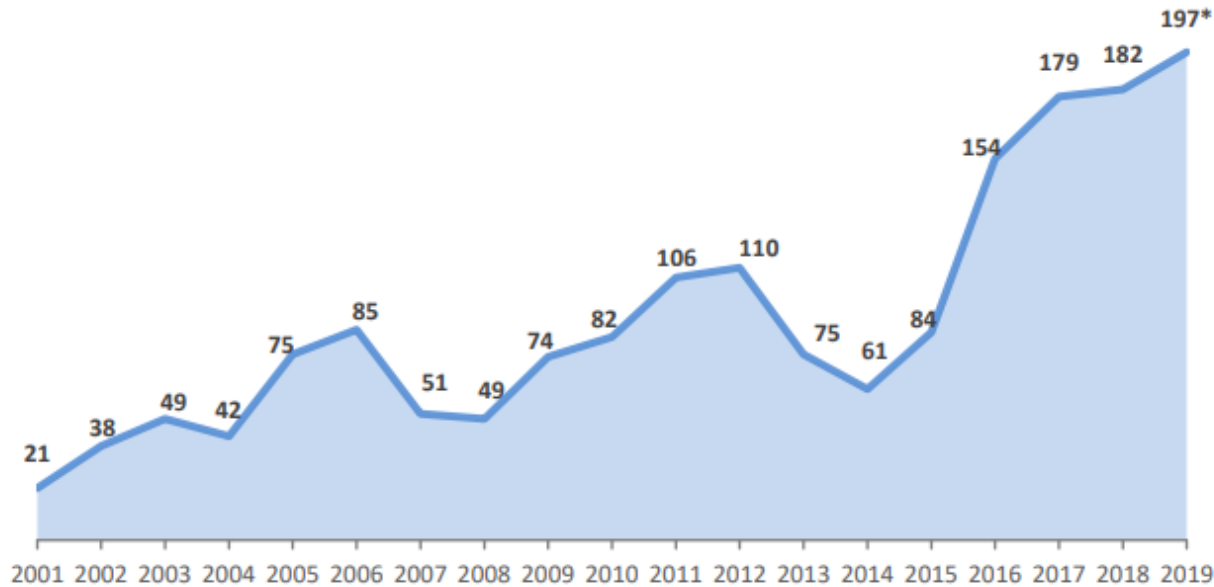
**2020: 145 days with temperatures over 100 degrees
145 dias con temperaturas arriba de 100 grados**

Why does this matter? Porque es importante esta información?



Heat-Associated Deaths by Year

Graph 1. There were 197 heat-associated deaths reported in 2019.



*3 cases pending

Data Sources: Maricopa County, Office of Vital Registration and Office of Medical Examiner; Arizona Department of Health Services, Office of Vital Registration

Muertes asociadas por el calor anualmente;

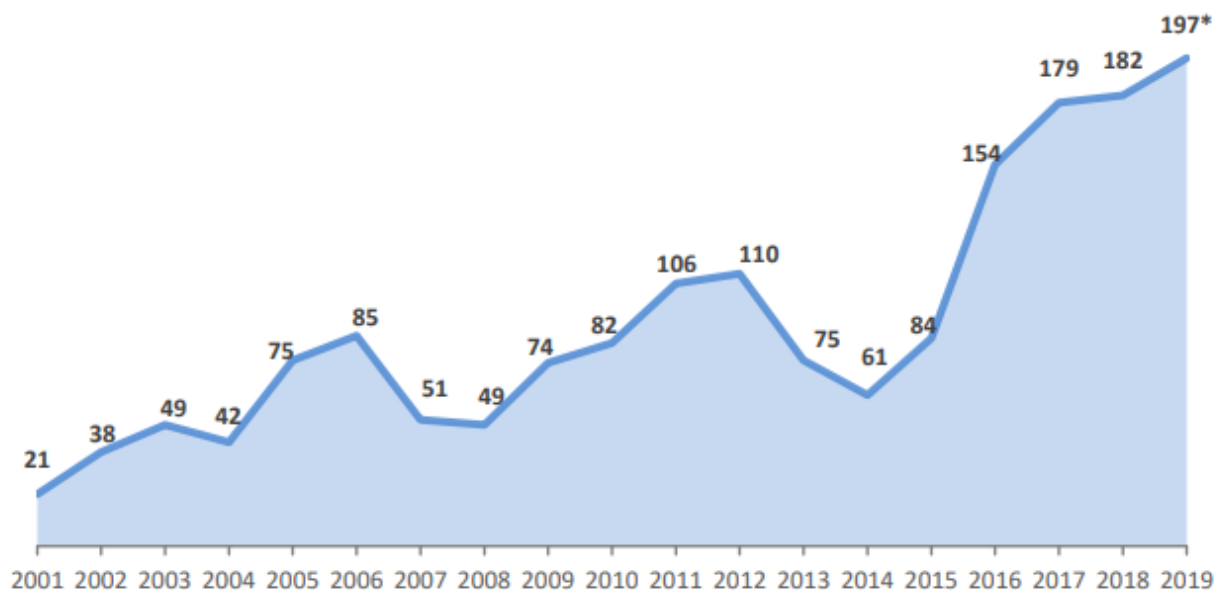
Tabla 1. Hubieron 197 muertes asociadas por el calor reportado en 2019 con 3 casos mas bajo investigación.

Why does this matter? Porque es importante esta información?



Heat-Associated Deaths by Year

Graph 1. There were 197 heat-associated deaths reported in 2019.



*3 cases pending

Data Sources: Maricopa County, Office of Vital Registration and Office of Medical Examiner; Arizona Department of Health Services, Office of Vital Registration

Muertes asociadas por el calor anualmente;

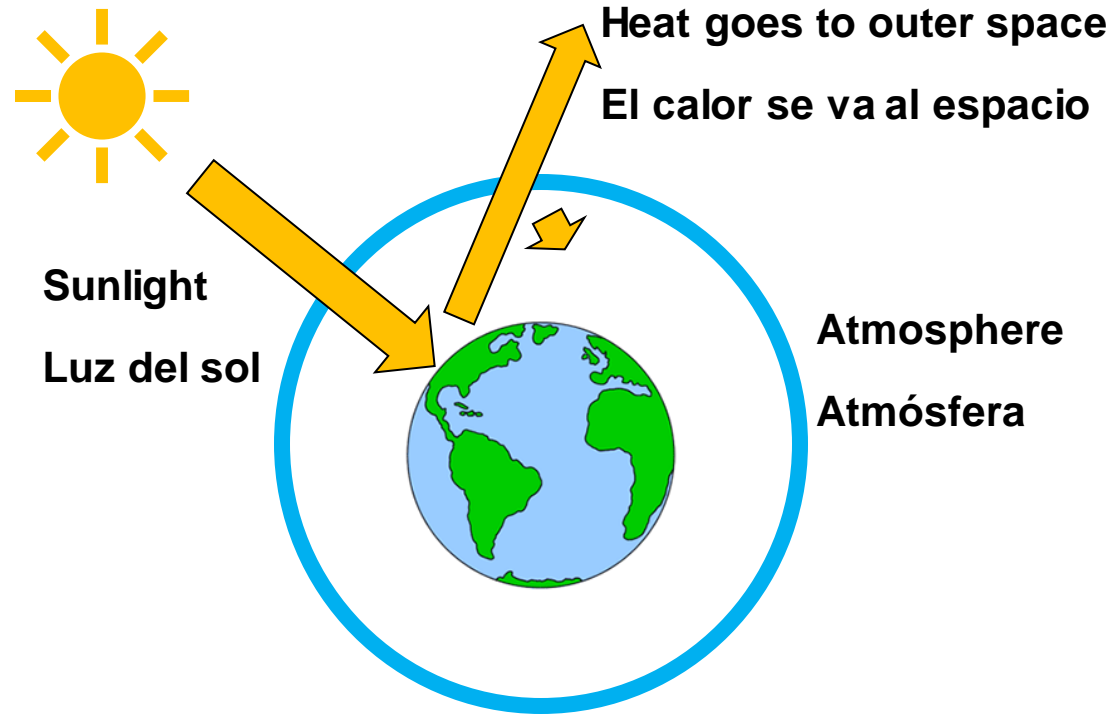
Tabla 1. Hubieron 197 muertes asociadas por el calor reportado en 2019 con 3 casos mas bajo investigación.

2020 – 207 confirmed cases with another 134 under investigation
2020- 207 casos confirmados con otras 134 mas bajo investigación



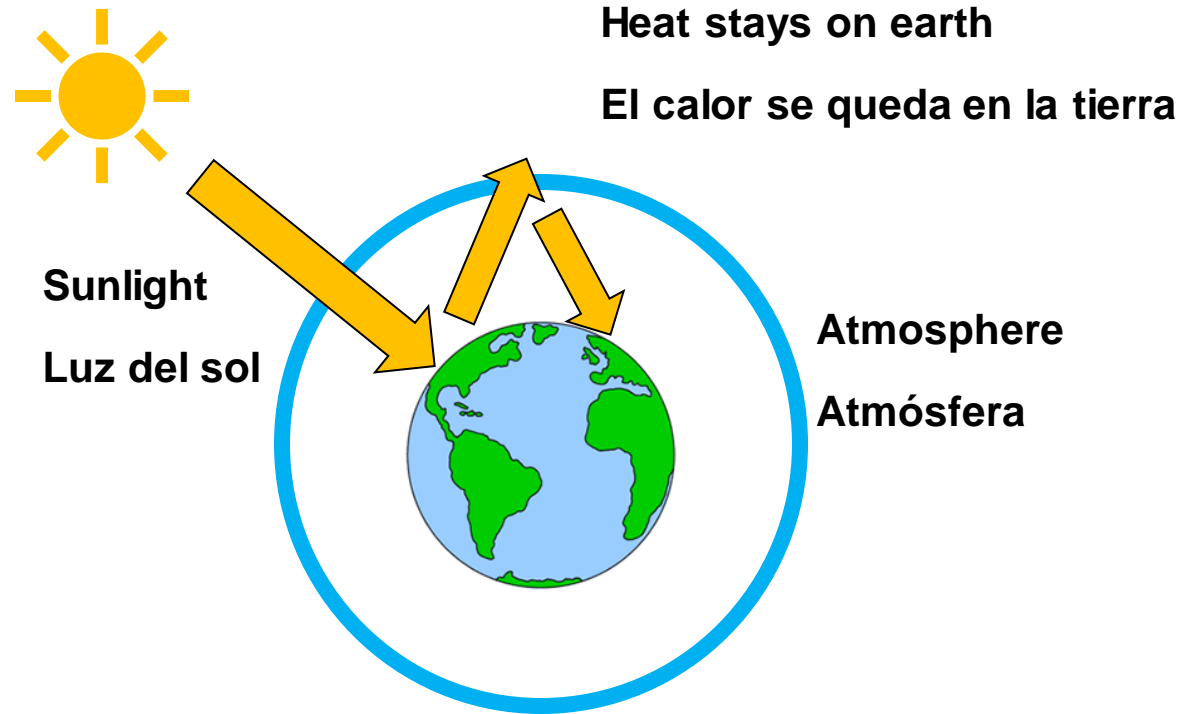
Greenhouse Effect

Efecto Invernadero





More greenhouse gases in atmosphere means more heat for us



Mas gases en la atmosfera significa mas calor para nosotros



GHG Sources in Phoenix



Stationary
51%
Edificios



Transportation
47%
Transporte



Waste
2%
Residuos

Greenhouse gases (GHGs) are gases that absorb heat in atmosphere.

Gases de efecto invernadero son gases que absorban calor en la atmósfera.

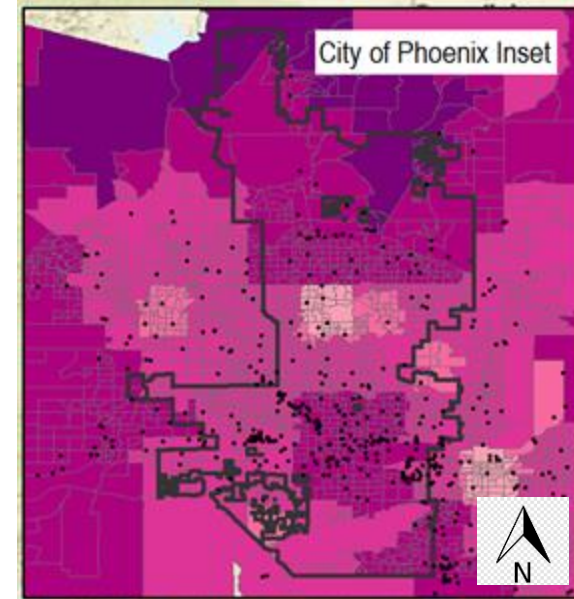
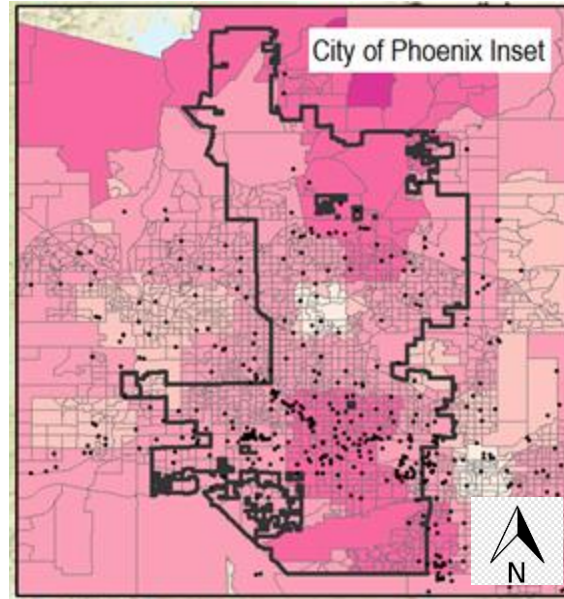
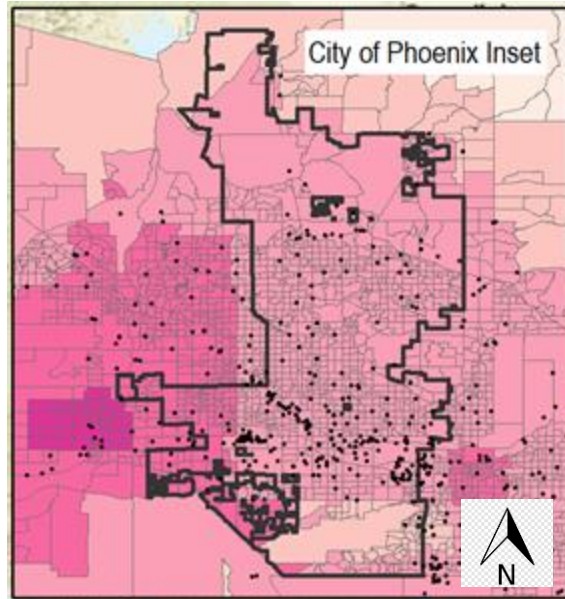


Extreme Heat: Maximum Summer Temperature (Darker colors signify higher temperatures)

Calor extremo: temperatura maxima en el Verano (Colores mas oscuros significa temperaturas mas altas)

Option/Opción 1

Option/Opción 2



**Historical Average
over 1986-2005
Promedio Histórico
de 1986-2005**

**Predicted:
Lower emissions
Predicción:
Emisiones reducidas**

**Predicted:
Business as Usual
Predicción:
Si no cambiamos nada**

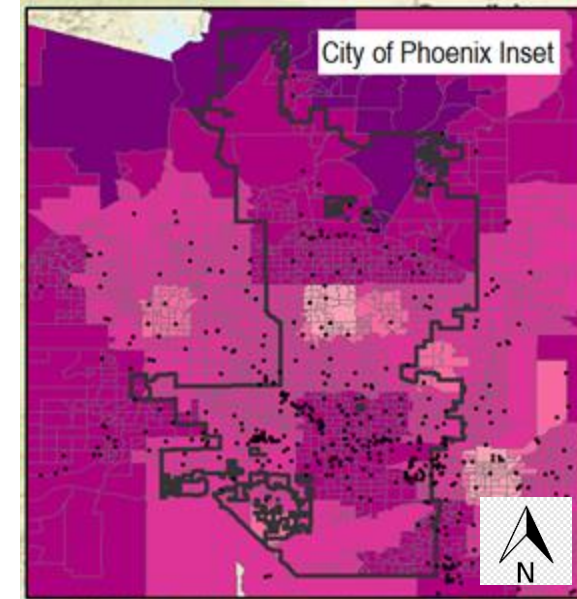
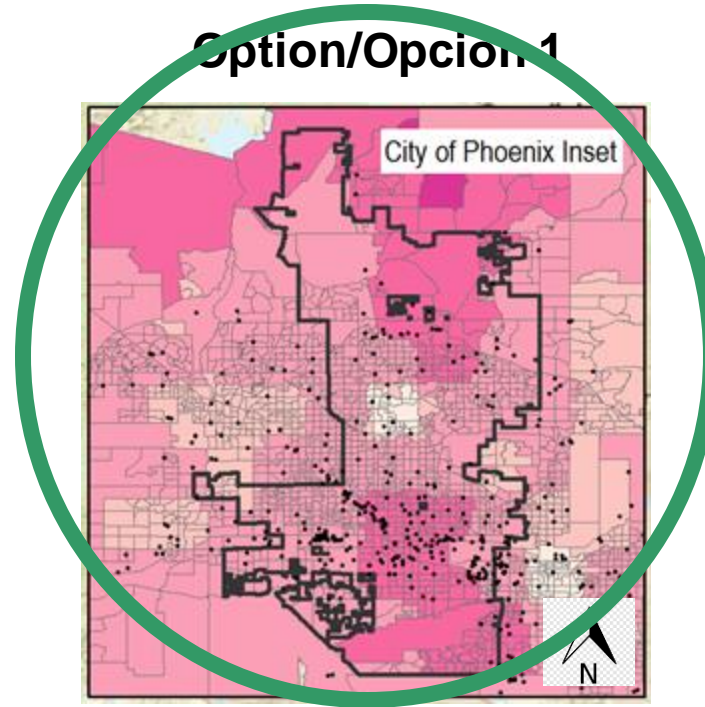
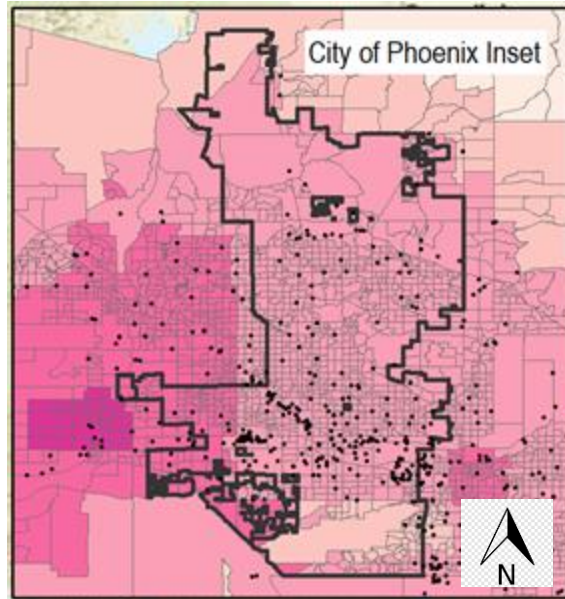


Extreme Heat: Maximum Summer Temperature (Darker colors signify higher temperatures)

Calor extremo: temperatura maxima en el Verano (Colores mas oscuros significa temperaturas mas altas)

Option/Opción 1

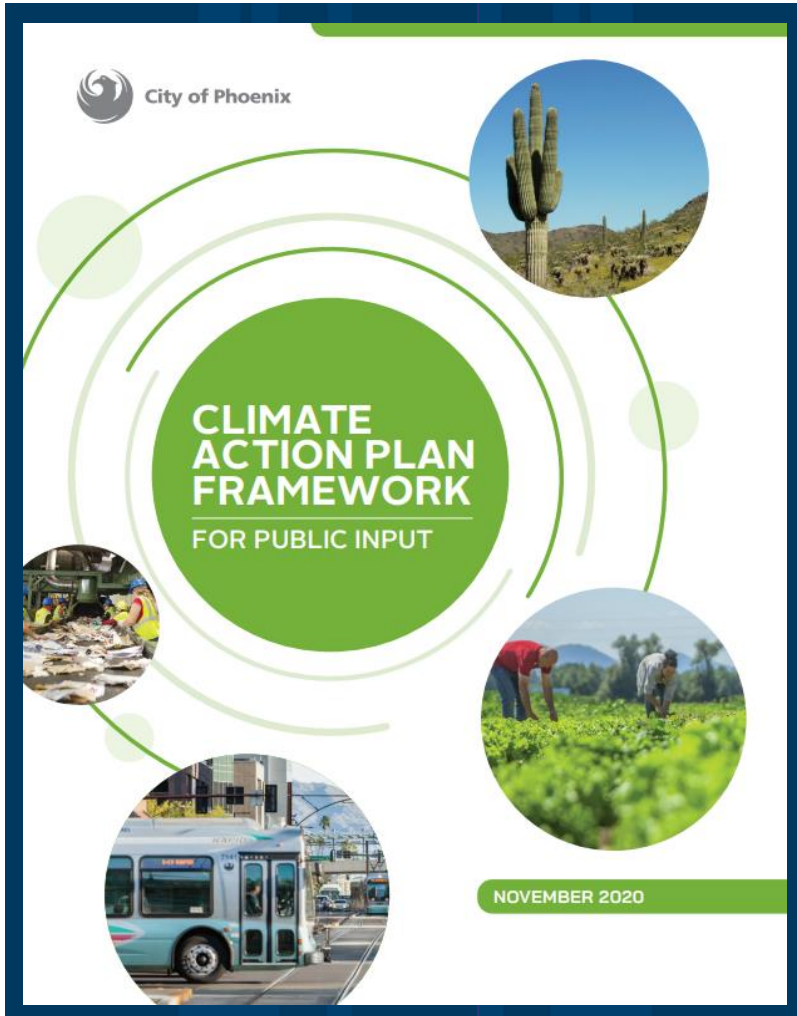
Option/Opción 2



**Historical Average
over 1986-2005
Promedio Histórico
de 1986-2005**

**Predicted:
Lower emissions
Predicción:
Emisiones reducidas**

**Predicted:
Business as Usual
Predicción:
Si no cambiamos nada**



phoenix.gov/oep/climate



Sector Goals

Metas por sector

2050 Goals

Metas para 2050

**Quickstart Action
Examples**

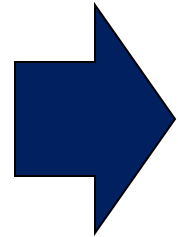
**Ejemplos de acciones que se
pueden tomar rápidamente**

Short, Mid, Long-term Goals

**Metas a corto, mediano y
largo plazo**

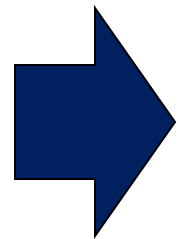
Key Achievements

Logros claves



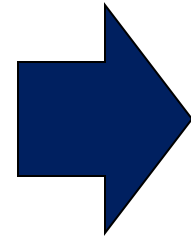
**Emission
Reduction
Goals**

**Stationary Energy Sector
Transportation Sector
Waste Sector**



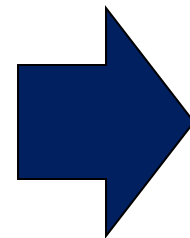
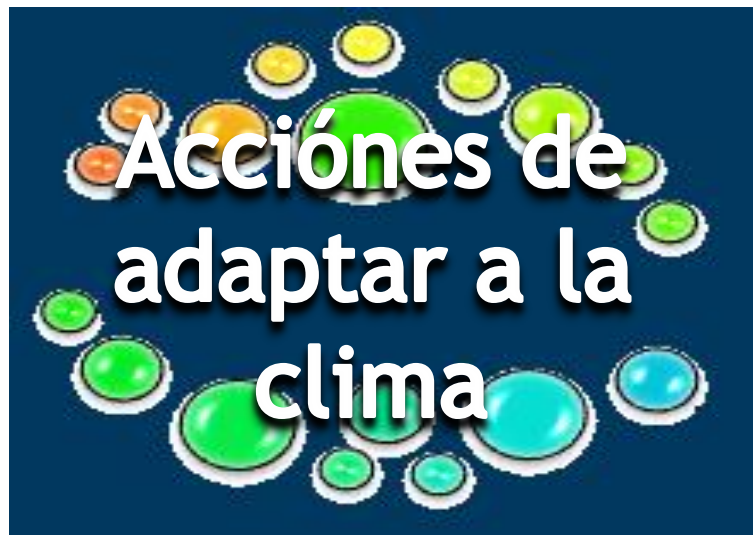
**Metas para
Reducir
Emisiones**

**Sector de energia
utilizado en edificios
Sector de transporte
Sector de residuos**



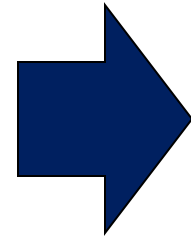
**Resiliency
Goals**

**Air Quality
Local Food Systems
Heat
Water**

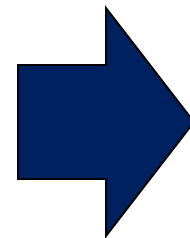
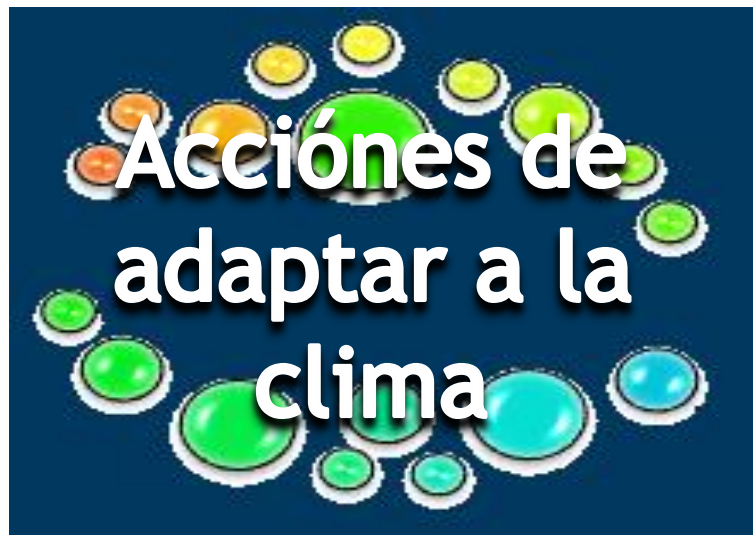


**Metas
resistir a
cambios
climáticas**

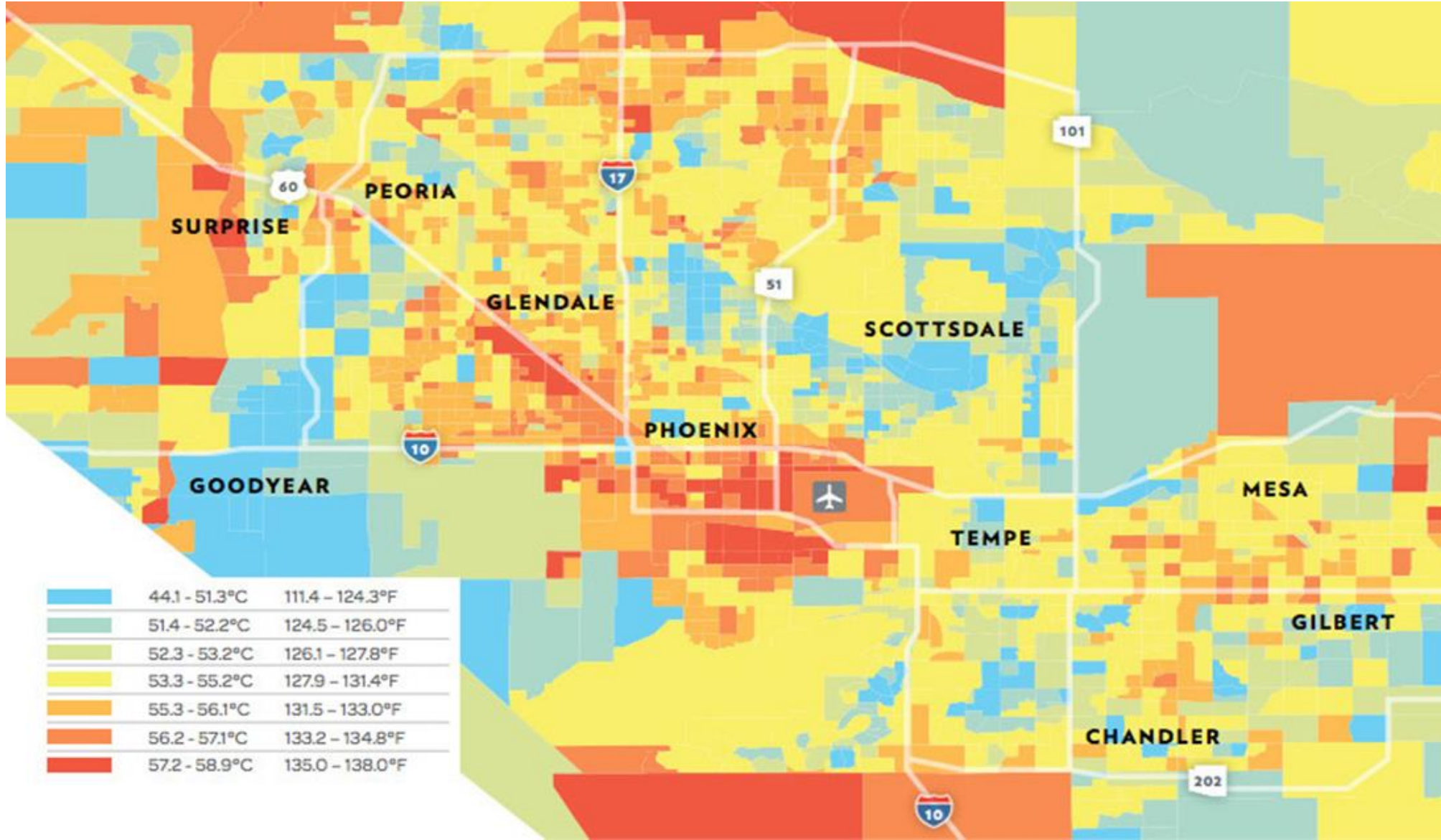
**Calidad de Aire
Sistema Alimentario Local
Calor
Agua**



Air Quality
Local Food Systems
Heat
Water



Calidad de Aire
Sistema Alimentario Local
Calor
Agua



Urban Heat Islands/Islas urbanas de calor

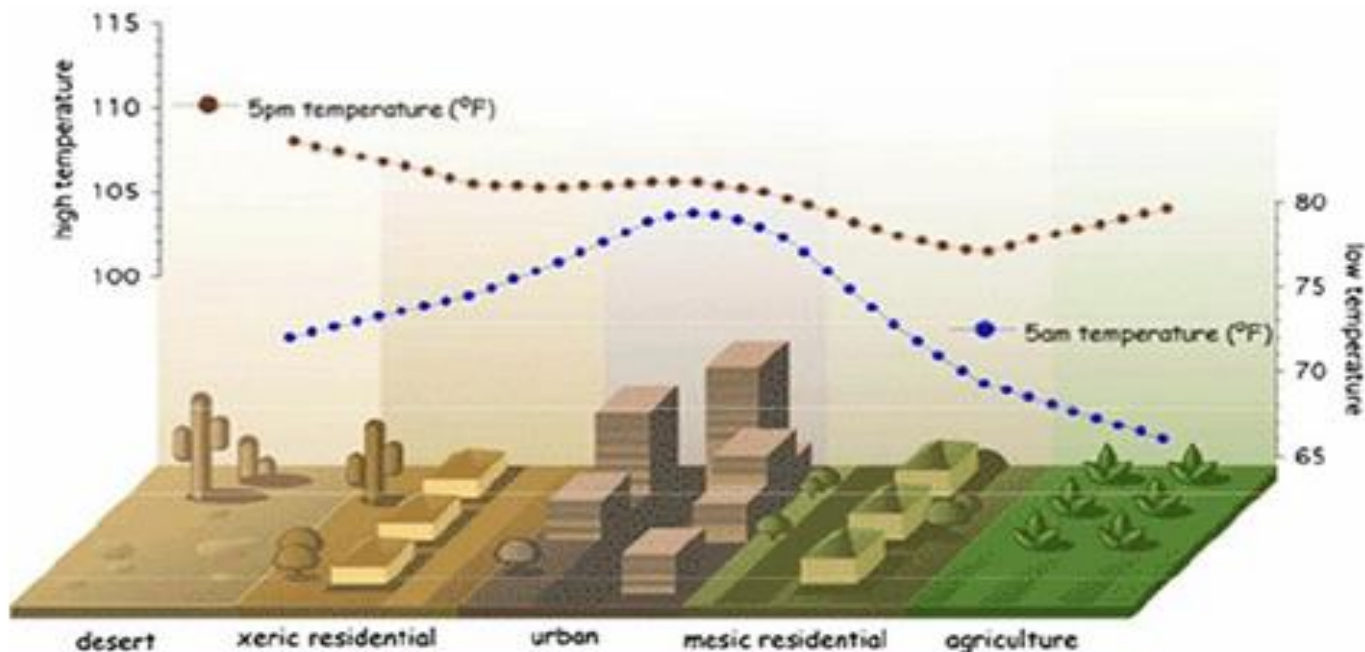


Fig. 1 Typical profile of the Phoenix urban heat island (UHI) using the five predominant land- cover types of the metropolitan area (Harlan et al. 2007)



2050 Goal:



2030 Goal:



Meta para 2050:

Que toda la gente tenga acceso a un area verde o camino dentro de 5 minutos

Meta para 2030:

25% Cobertura de arboles o sombra

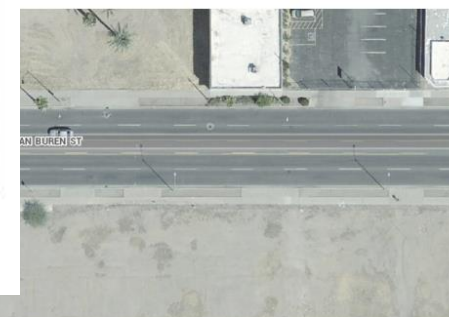
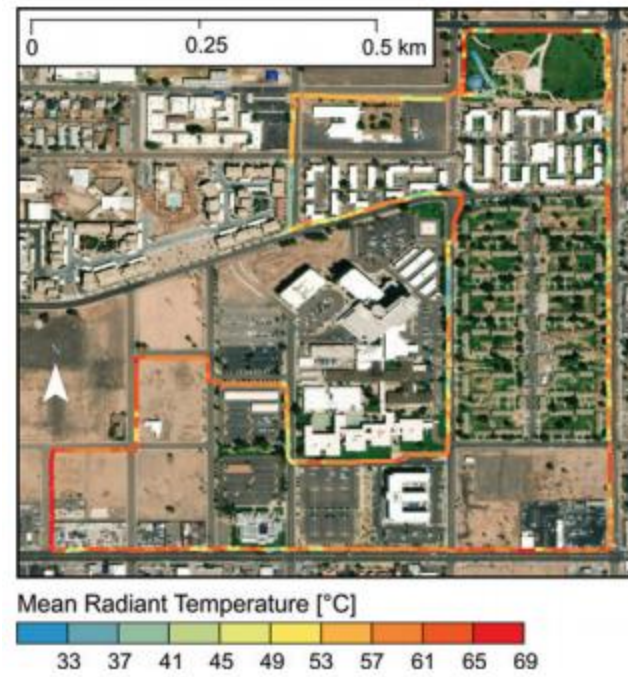
Nature's Cooling Project

Goal 1:

Create a network of cool corridors in vulnerable communities to facilitate movement from residents' homes to their places of employment, education and play.

Primer Meta:

Crear una red de corredores frescos en comunidades vulnerables para facilitar el movimiento de los residentes a sus lugares de trabajo, de educacion, y entretenimiento.



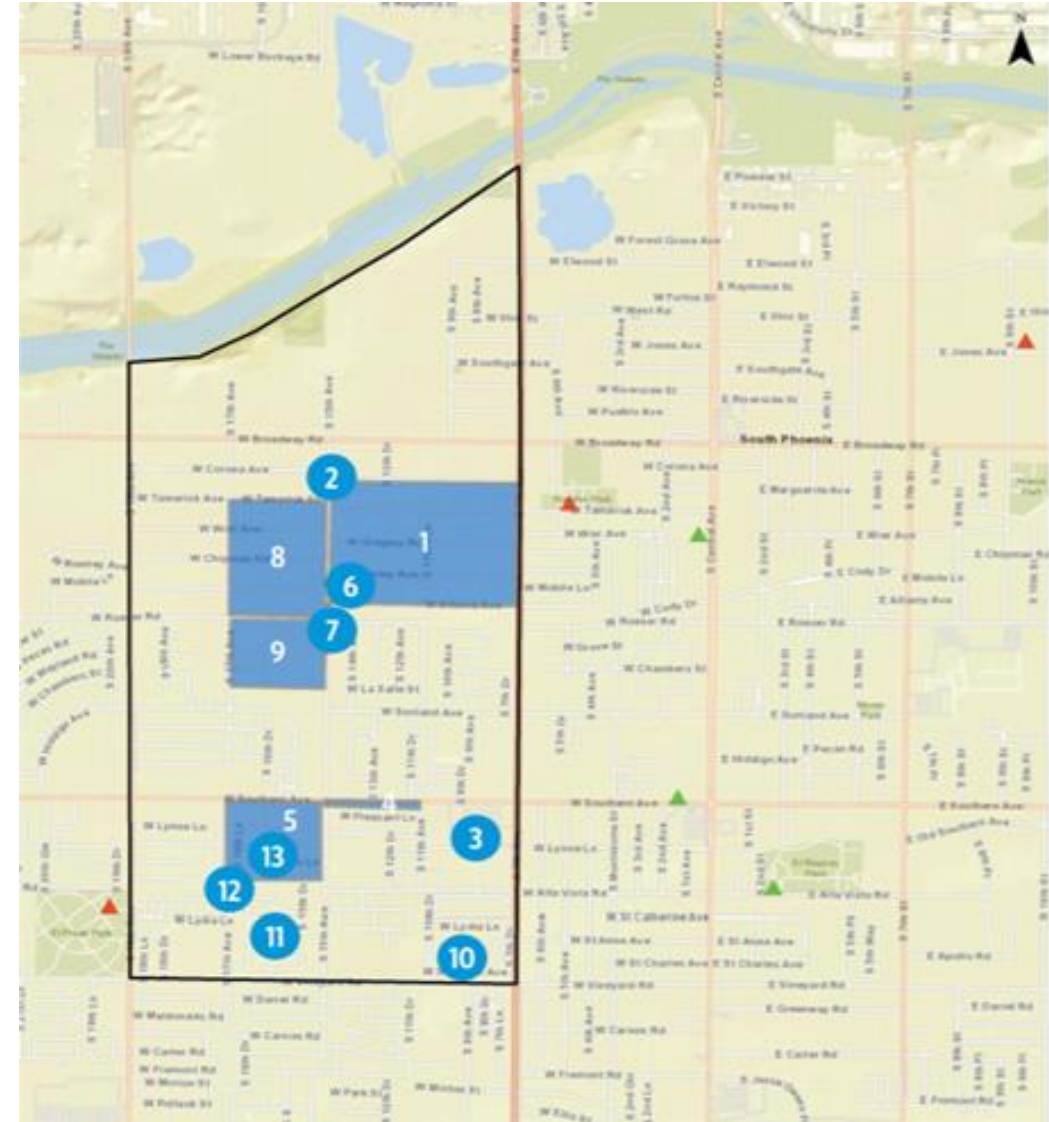
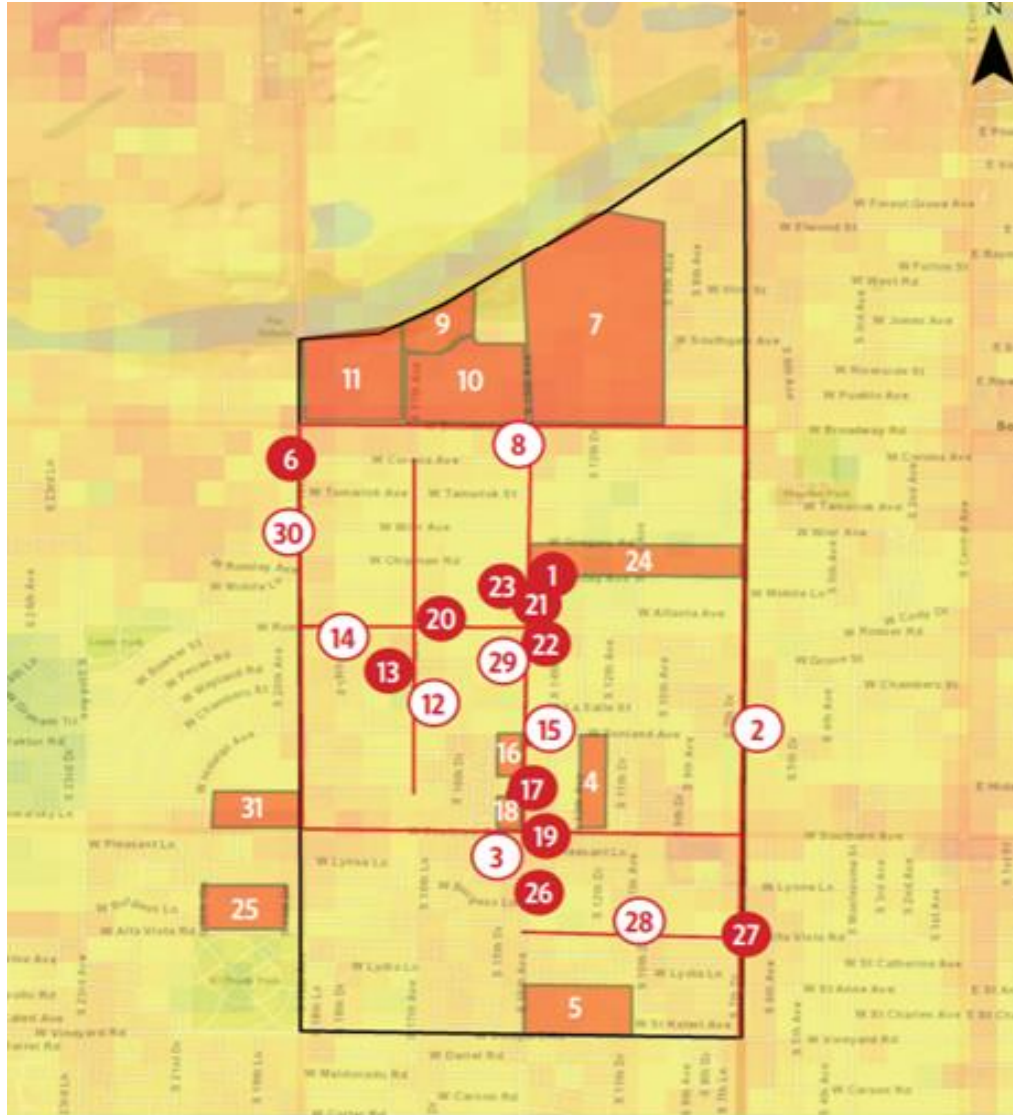


1. Financial burden and lack of resources for tree planting and shade
2. Risk of heat-related illness and the need to create safety during the heat, especially for students and seniors living alone
3. Children often stay inside during the summer months
4. Vacant lots and dust
5. High electricity bills made worse by poor quality housing materials and lack of insulation in homes
6. Need to develop advocacy skills to promote the heat mitigation and adaptation strategies
7. Lack of access to drinking water



Hot Spots and Cool Spots

Areas calientes y areas refrescantes



Solution Story



Solution Story





Goal 2:
Increase **shade** provided by trees or constructed shade in parks, streets and right-of-way.

Segunda Meta:
Aumentar **sombra** construidas o por arboles en parques, calles, y veredas o callejones.

PHOENIX'S ENCANTO AREA



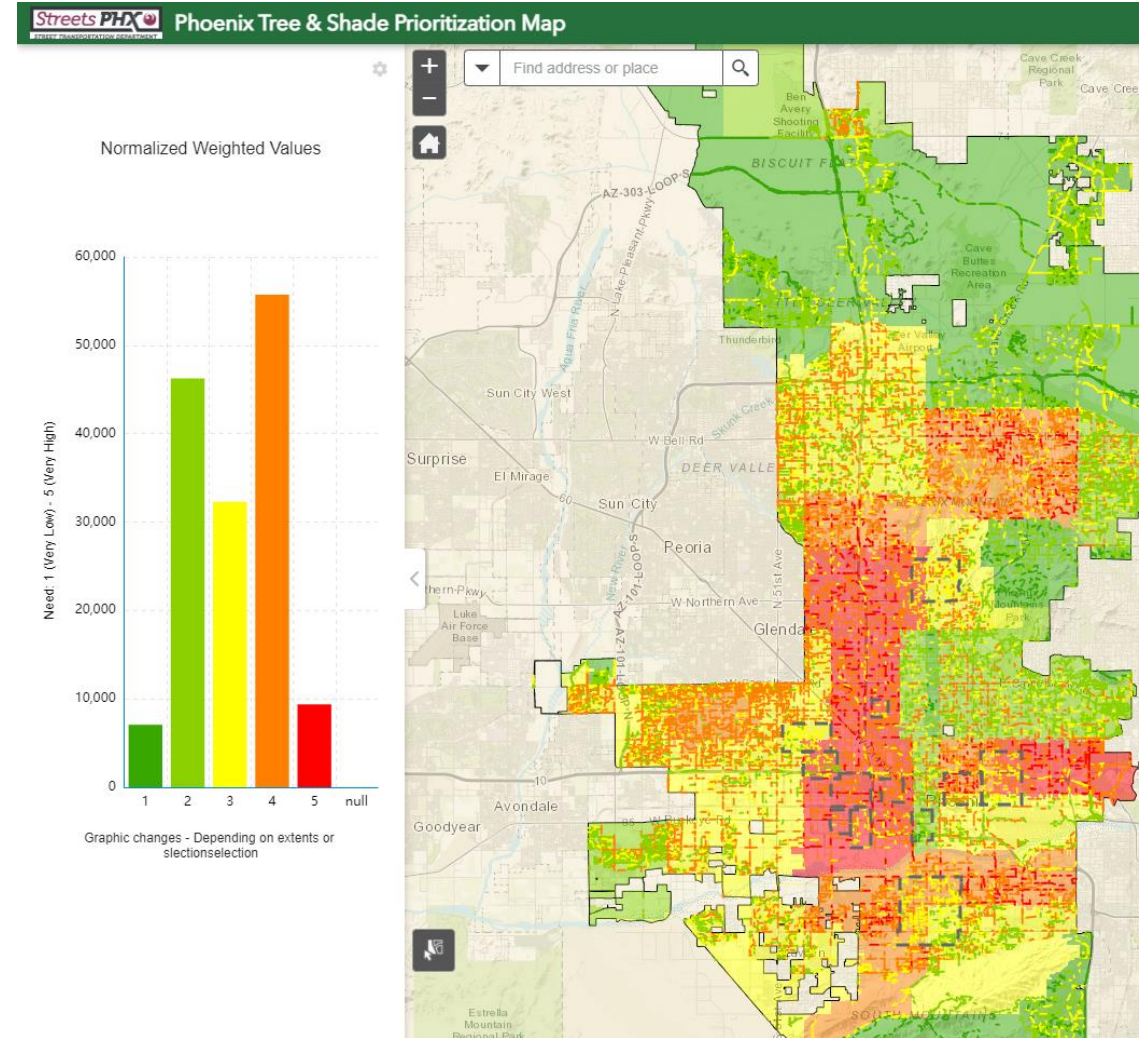
SOUTH PHOENIX





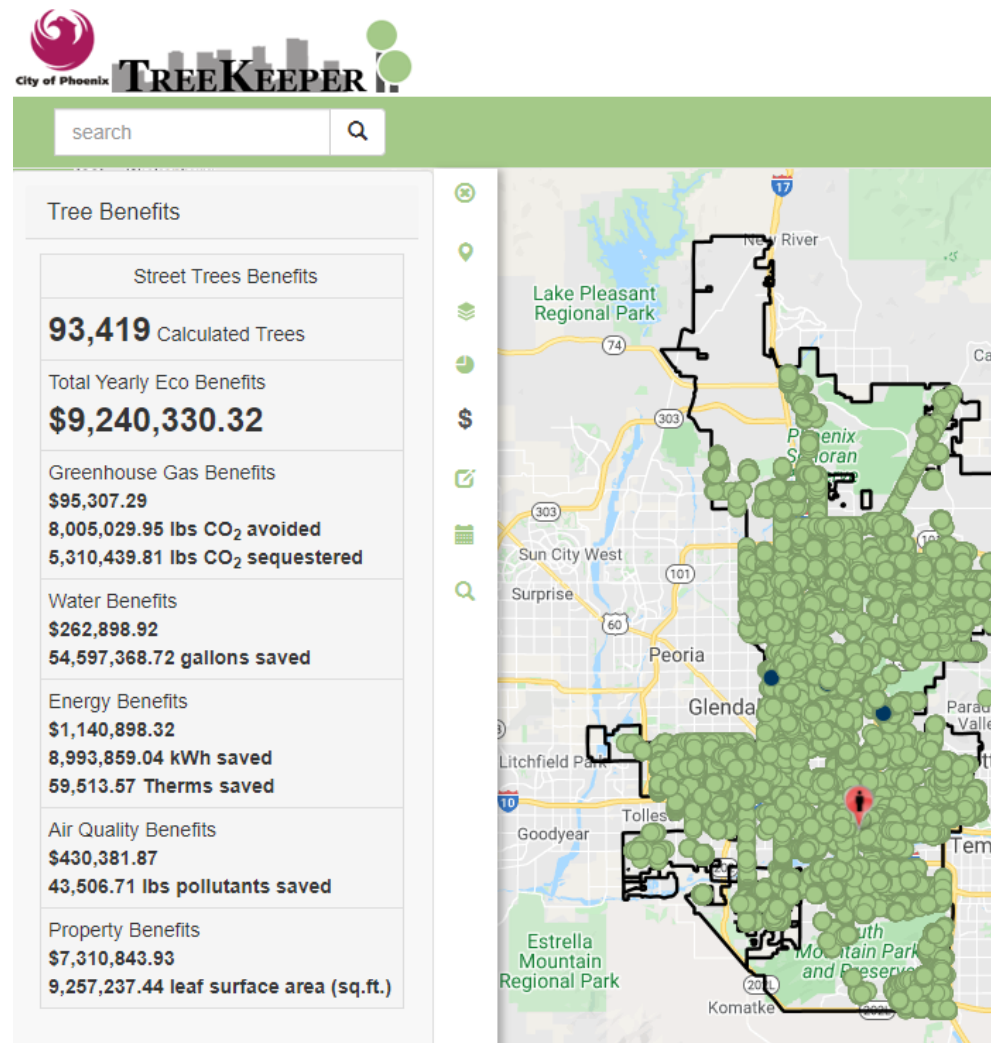
Goal 2:
 Increase **shade** provided by trees or constructed shade in parks, streets and right-of-way.

Segunda Meta:
 Aumentar **sombra** construidas o por arboles en parques, calles, y veredas o callejones.



Goal 2:
Increase shade provided by trees or constructed shade in parks, streets and right-of-way.

Segunda Meta:
Aumentar sombra construidas o por arboles en parques, calles, y veredas o callejones.





Goal 3:
Provide resources and services to residents to manage heat.

Tercer Meta:
Proveer servicios y recursos para que residentes tratar con el calor.

Human Services led the efforts for and coordinated with multiple City departments to create a Heat Respite Center at the Phoenix Convention Center. From May 29 through September 30, over 27,000 guests utilized the Heat Respite Center.

Human Services Department con el apoyo de otros departamentos creó un centro para escapar del calor en Phoenix Convention Center. De Mayo 29 a Septiembre 30, más de 27,000 personas utilizaron el centro.



Goal 4:
Increase the use of high albedo, or reflective, materials in infrastructure projects.

Cuarta Meta:
Aumentar el uso de materiales reflectivo en proyectos de infraestructura.

Cool Pavement Pilot Locations

Mayor	QS: 11-30 – Van Buren St / Roosevelt St from 12 th – 16 th St	Completed!
D1	QS: 33-18 – Thunderbird Rd/Acoma from 47 th - 43 rd Ave	Completed!
D2	QS: 59-23 - Carefree Hwy / Languid Ln from OPEN SPACE / 27 th Ln	Completed!
D3	QS: 29-37 – Shea Blvd / Cholla St from 40 th – 44 th St	Completed!
D4	QS: 11-22 – Van Buren St / Roosevelt St from 31 st – 27 th Ave	Completed!
D5	QS: 18-16 - Campbell Ave / Camelback Rd from 55 th – 51 st Ave	Completed!
D6	QS: 26-28 – Las Palmaritas Dr / Dunlap Ave from Central Ave to 7 th St	Completed!
D7	QS: 2-19 Vineyard Rd / Southern Ave from 43 rd – 39 th Ave	Completed!
D8	Esteban Park: 3345 E. Roeser Rd – Parking Lot	Completed!

Traditional Asphalt
121°

Cool Pavement

106°

109°

111°

Pavimentacion Fresca

Asfalto tradicional



Goal 5:
Develop HeatReady certification for cities.



Quinta Meta:
Desarrolla HeatReady certificación para las ciudades.

- Develop certification like the National Oceanic and Atmospheric Administration StormReady Program.
- Identify programs that prepare the city for extreme heat events.
- Focus on Shade Cover, Education, Transit, Housing, and Emergencies.



- Desarrollar programa para certificar a ciudades que es similar a StormReady de Administración Nacional Oceánica y Atmosférica.
- Identifica programas que prepara la ciudad para eventos de calor extremo.
- Enfocado en sombra, educación, transito, las casas, y emergencias.



- Please mute your device when you are not speaking.
- Please be respectful and courteous to other participants.

- Por favor pon sus aparatos en silencio cuando no están hablando.
- Por favor sean respetuosos y cortés a los otros participantes.



Public Engagement Participación Pública

**Spring 2021
Primavera 2021**

**Complete C40 Pathways Modeling
Completar Model de C40 Pathways**

**Spring 2021
Primavera 2021**

**Draft Plan Completed
Completar versión preliminar**

**Spring 2021
Primavera 2021**

**Plan Public Comment Period
Periodo de Comentario Publico**

**Summer 2021
Verano 2021**

**Final Plan to City Council
Final Plan va a Ayuntamiento**

**Fall 2021
Otoño 2021**



Find your Councilmember

Encuentra a su Miembro del Ayuntamiento

<https://www.phoenix.gov/mayorcouncil/find-my-council-district>

Mayor & Council



The Phoenix City Council is made up of a mayor and eight councilmembers, elected by the people on a non-partisan ballot for four-year terms. Find information on this page to help you get in touch with your councilmember.

- [Use our online search to find your council member](#)
- [View a listing of all City Council staff](#)
- [View a list of City Council Subcommittees](#)
- [View City Council meetings and agendas](#)



Mayor Kate Gallego

MAYOR'S HOME PAGE



EMAIL MAYOR GALLEGO



Contact Mayor's Office

Please be aware that the email message you are about to send is: (1) subject to disclosure under the Public Records Law, (2) not private or confidential and (3) retained for 90 days. An email sent on this system is a public record and may be viewed immediately by the media and/or public and could become part of a future public records request.

To communicate to Mayor Gallego, you can complete this form or use your own Internet email system instead of this form and use mayor.gallego@phoenix.gov. Whichever system you choose for sending an email, the content of the message is still a public record.

You may also contact Mayor Gallego by telephone at [602-262-7111](tel:602-262-7111).

*denotes required field

First and Last Name*

Email Address*

Area Code

Phone Number

Mailing Address*

City

State

ZIP



**Climate Page, Surveys, Future Workshop
Information**

**Pagina de Clima, Encuestas, Futuros
Talleres**

www.phoenix.gov/oep/climate

**Public can submit questions to
El publico puede enviar sus preguntas
electronicamente a
climate@phoenix.gov**



Office of Environmental Programs

Phoenix Climate Action Planning

Have a minute? Give us your feedback!
What climate action do you want by 2025?
[Let us know here!](#)

The Draft Climate Action Plan Framework is now available for public review and comments.

View the draft [here](#) or by clicking the photo.