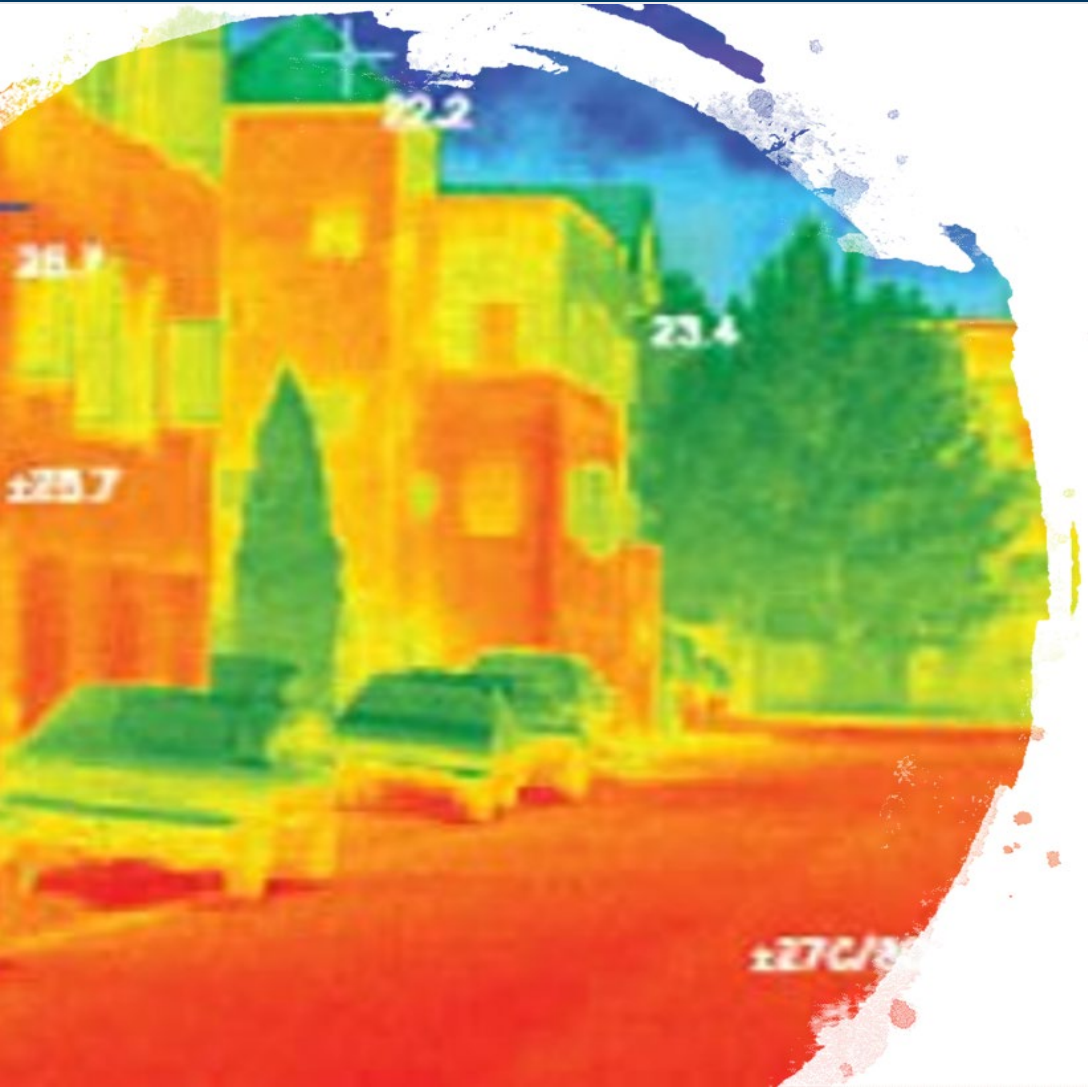


Mark Hartman
Chief Sustainability
City of Phoenix



Becoming a **HEAT-READY** City

Summer Heat in Phoenix

UP TO

21^o

Hotter in the city
than in rural areas

AVERAGE

3.2^o

Summers are hotter
than in rural areas



Urban heat threatens:

- Public health and well-being
- Vulnerable populations
- Economic viability



Programs for Vulnerable Communities



- **Heat- Relief Network & We're Cool**
- **Weatherization Program**
- **Water: Low-Flow Devices & Low Income Programs**
- **Neighborhood Tree Plantings / Offsets**
- **Targeted Tree Planting (Streets)**
- **Cool Corridors & Walk Shed Mapping**

Other Heat Activities (excluding Trees)



- **HeatReady Certification**
- **Heat Mitigation & Adaptation Plan**
- **Walkable Urban Code (WU Code)**
- **Cool Pavement Pilot** (phoenix.gov/street/coolpavement)
- **Heat Research (Cool Research)**

Future

- **New Shade Ordinance**
- **Building Code Updates**
- **Climate Action Plan**

Other Heat Activities (Trees)



- **4000+ Annual Tree Plantings (\$5M maintenance)**
- **Urban Forestry Roundtable**
- **Carbon Offset Program (Urban Offsets & ASU)**
- **Citizen Forester Program**

FUTURE

- **Tree Ordinance Update**
- **EQSC Recommendations**
- **Tree Donation Portal**
- **Tree Planting Goal and Annual Tree Report**