



TNC Healthy Cities Program

The Phoenix Metropolitan Area is the **hottest** in the U.S. and also ranks 7th in terms of ozone pollution.



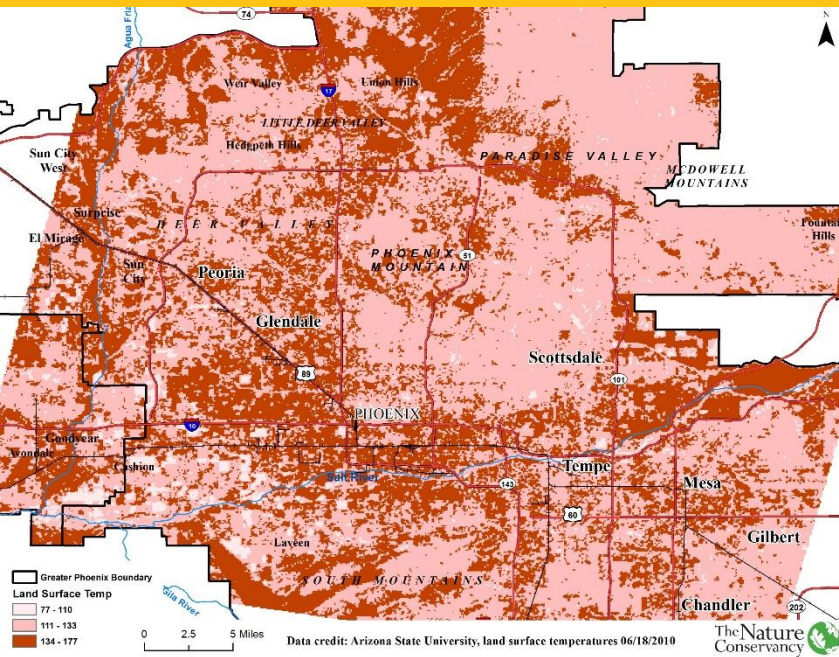


On some days, there are neighborhoods in Phoenix that are only **two miles** apart and have a **13°F** difference in temperature.

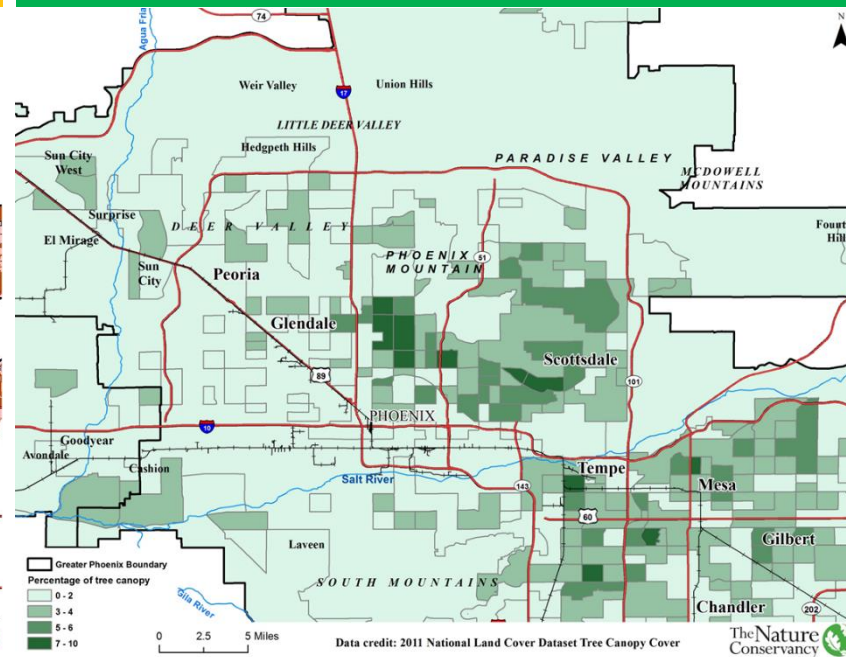
Equity Challenges

The **hottest** communities also have the **lowest tree canopy** cover and the **highest child poverty**.

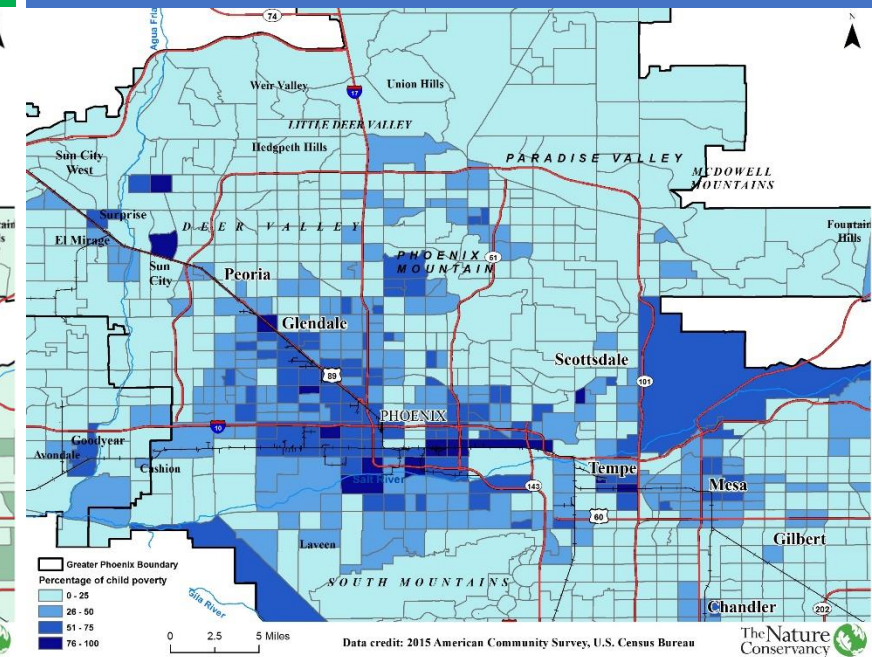
Urban Heat



Tree Canopy Cover



Child Poverty

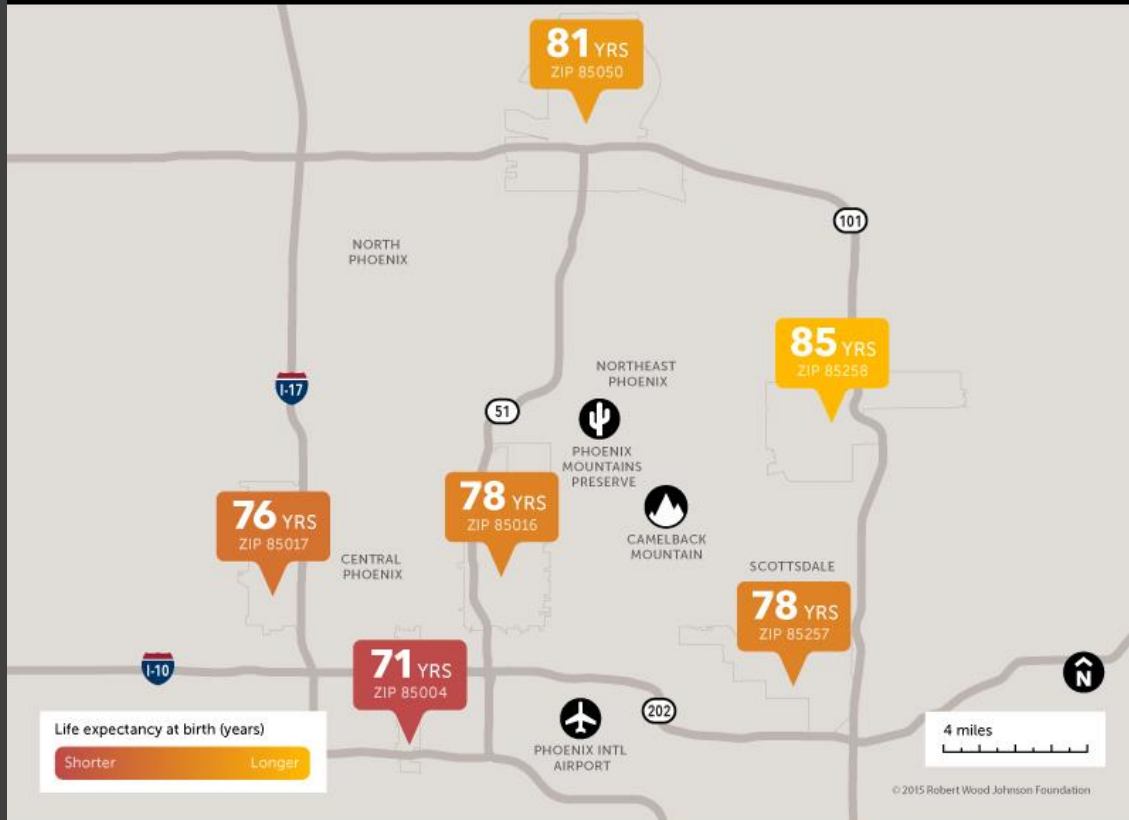


PHOENIX, ARIZONA

Follow the discussion

#CloseHealthGaps

Short Distances to Large Gaps in Health



Differences in Life Expectancy

- Residents of Greater Phoenix face up to a **14-year difference in life expectancy**, depending on what zip code they live in.

Heat and Air Quality in a COVID-19 World

- Air pollution, **which worsens COVID-19 outcomes**, concentrates in south and west Phoenix.
- This summer, Phoenix had 50 days+ over 110°F yet there were far **fewer heat relief locations** open due to COVID-19.
- Communities highly impacted by economic downturn are also facing **increased need for costly air conditioning**.

Nature-Based Solutions

Increasing tree and shade canopy cover by planting the right tree, in the right place, and with the right water can reduce temperatures substantially.

 **Summer Sessions**
Your chance to advance
Register today!
asu.edu/summer 



GOAL

By 2030, achieve 15% tree canopy cover in all underserved communities in the 10 large municipalities in Maricopa County.

Solutions

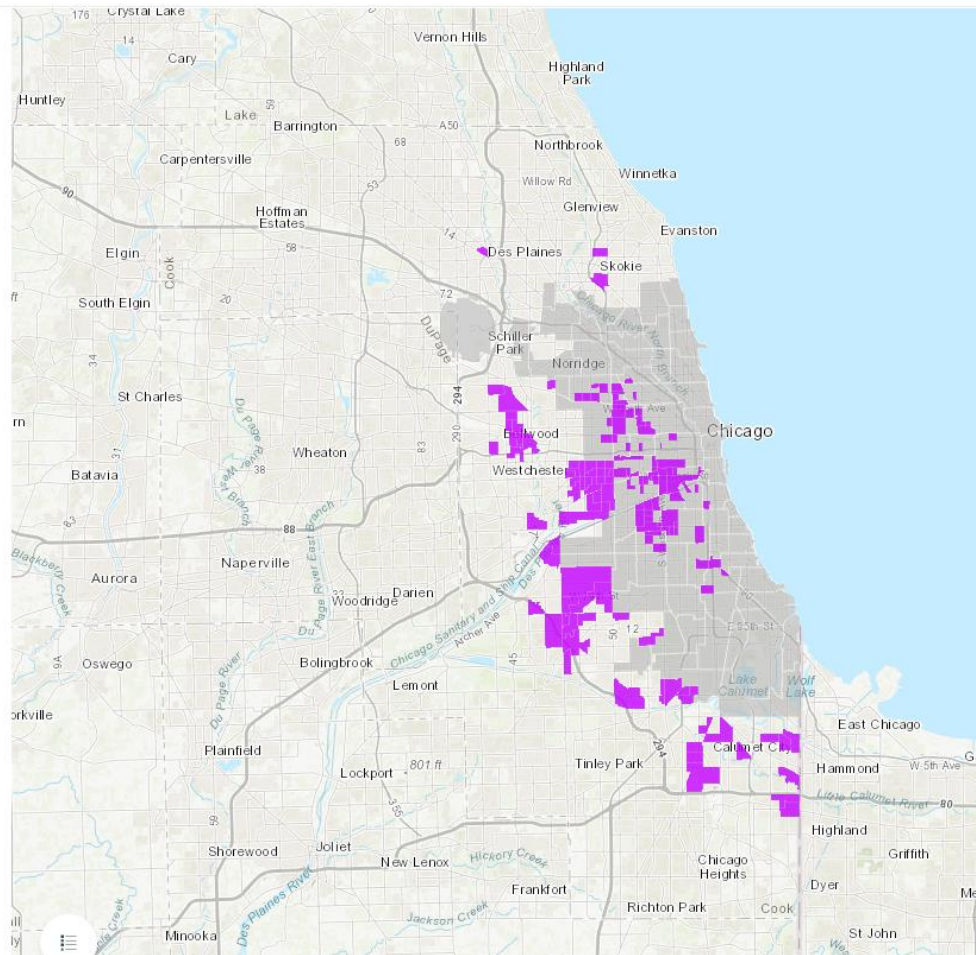
- Make the case for nature-based solutions
- Develop the science and tools to inform policies and plans
- Build grassroots capacity



Highest Risk Areas

Unfortunately some communities in our region are vulnerable to all three of the types of climate risk we analyzed. In this map, we show the overlap between areas of high flood risk, poor air quality, and high heat. The highlighted areas are those places in Chicago and Cook County with higher vulnerability to these threats based on our analysis. Within the highlighted area is Marshall Square, one of the neighborhoods in this situation.

The Greenprint data is available online at [this link](#). Users can examine all of the data layers shown in this article, and can zoom in to examine the situation in specific neighborhoods.



Example

Healthy Cities Program

Anna Bettis:

anna.bettis@tnc.org

