

City of Phoenix Climate Action Planning UHITS Presentation



Jan 12, 2021



C4O
CITIES

Climate Action Plan Survey Results

865 Responses



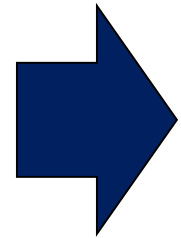
75% or more *extremely concerned* with:

- ✓ Extreme Temperature & Heat Waves
- ✓ Prolonged and extreme drought

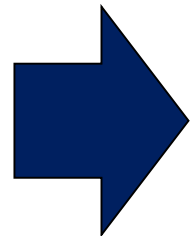


C4O
CITIES

Climate Action Planning

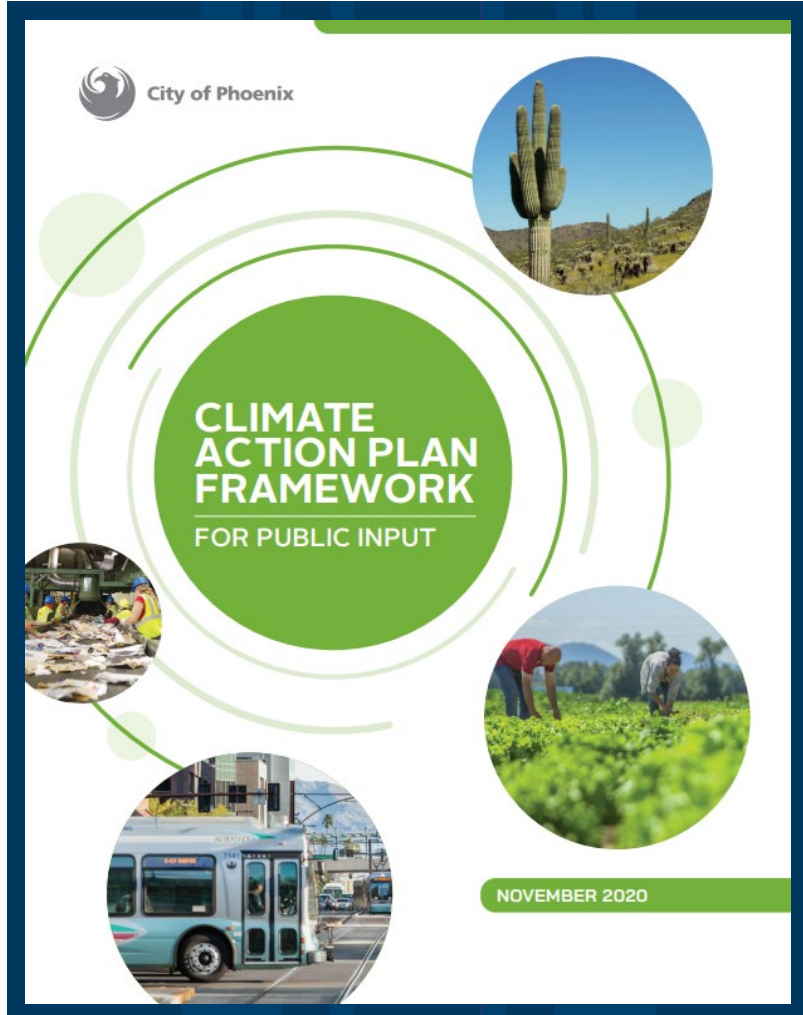


**Stationary Energy Sector
Transportation Sector
Waste Sector**



**Air Quality
Local Food Systems
Heat
Water**

Climate Action Plan Framework



Sector Goals

2050 Goals

Quickstart Action Examples

Short, Mid, Long-term Goals

Key Achievements

Heat Goals



2050 Goal:



Everyone within a
**5-Minute
Walk**
of a park or pathway



25%
Tree and
shade canopy

Goal 1:

Create a network of cool corridors in vulnerable communities

Goal 2:

Increase shade provided by trees or constructed shade

Goal 3:

Provide resources and services to residents to manage heat.

Goal 4:

Increase the use of high albedo, or reflective, materials in infrastructure projects.

Goal 5:

Develop HeatReady certification for cities.

Appendix – Heat Actions



Heat (H)

QUICK START ACTIONS (EXAMPLES)

Action H1.2: Complete walkshed mapping tool pilot by 2020.

Action H2.7: Provide shade at all 4,050 bus stops by 2025.

Action H4.2: Complete street cool seal pilot project by 2025.

Action H5.1: Complete pilot certification as a HeatReady City by 2022.



GOAL H1		Create a network of cool corridors in vulnerable communities to facilitate movement from residents' homes to their places of employment, education and play.		
Pending Actions		City Lead	Partnerships	Timeframe
H1.1	Update Phoenix's Walkable Urban Code to include additional heat mitigation actions.	Planning and Development Department		Short-term
	The Walkable Urban Code regulates development in proximity to light rail stations. Additional heat mitigation actions are being considered to be included in the code, along with the current shade requirements.			
H1.2	Develop walkshed mapping tool to identify key pedestrian corridors and priority routes for adding shade in vulnerable neighborhoods and increase shade provided by trees or constructed shade.	Office of Sustainability	ASU	Short-term



- **Cool Pavement Pilot**
- **Cool Research**
- **HeatReady City Registration**
- **Shade at 4050 Bus Stops by 2025**
- **Parks – 30% tree canopy by 2030**

Opportunities for UHITS?



- **Tree & Landscape Policy 2021**
- **Advocate for **Tree Czar** & Tree Inventory?**
- **Budget Process April 2021?**
- **Cool Roof Policy?**
- **Tree Donation Campaign?**
- **Setting a UHI Goal?**