

EAST EVERGREEN HISTORIC DISTRICT

Number of Properties: 25

Period of Significance: 1909-1930

Predominant Architectural Style:

Bungalow

Register Listings:

National Register of Historic Places (NRHP) 2010

Phoenix Historic Property Register (PHPR) 1999

Individually Listed Properties:

Col. James H. McClintock House, 323 E. Willetta St. (PHPR 1990)

The East Evergreen Historic District contains just 25 properties within an irregular boundary drawn to include properties along Lynwood, Willetta and Fifth streets, the historic homes on Willetta Street, Townsend Park and McDowell Road. Craftsman-style homes dominate East Evergreen with a mix of styles in modest one-story and elaborate two-story examples.

The district began as part of Central Place, an 1887 addition to Phoenix, platted by J.T. Simms, a wealthy farmer. Central Place included a quarter section of land, ½ mile north of the original Phoenix townsite.

By 1900, Central Place had new owners, Lloyd B. and Mary Emma Christy, who renamed it the Evans Addition. That same year, the Evans Addition received streetcar service. The line followed First Street north to Roosevelt Street, Roosevelt east to Third Street, and Third Street north to the Indian School. It was the first line to be built by the Phoenix Railway Company

using subsidies from property owners.

In 1909, the East Evergreen subdivision was platted. It encompassed the entire eastern half of the Evans addition, bounded by Third, Roosevelt, and Seventh streets and McDowell Road. One hundred fifty-two lots were created, most of which measured 70 feet x 190 feet or 95 feet x 140 feet, with eight much larger lots at the northern edge of the neighborhood.

By the 1920s, nearly all of the lots in East Evergreen had homes built on them. Townsend Park, at Fifth Street and McDowell Road, was also created, although it is unclear exactly when this took place. Early city maps show the park as early as 1930 but it did not become an official city park until 1945.

Several notable individuals are associated with East Evergreen:

Lloyd B. Christy served as mayor of Phoenix from 1909 to 1914. He organized the Phoenix Citizen Street Paving Association and by the

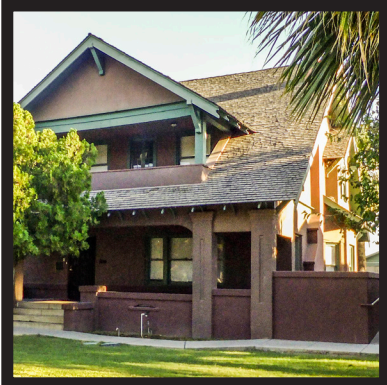
end of his term, all the streets in the original townsite were paved for the first time. The Christys never lived in East Evergreen, but they owned the property for many years and were responsible for its early development

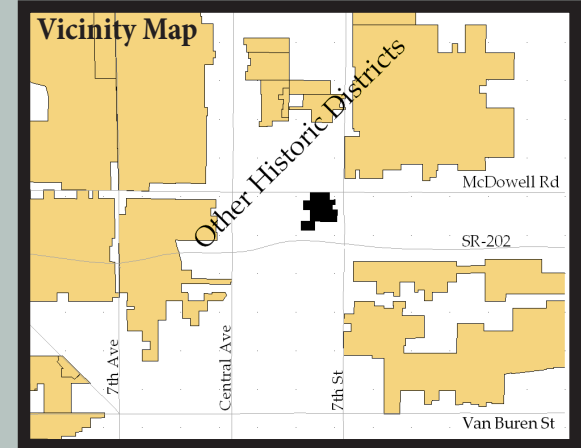
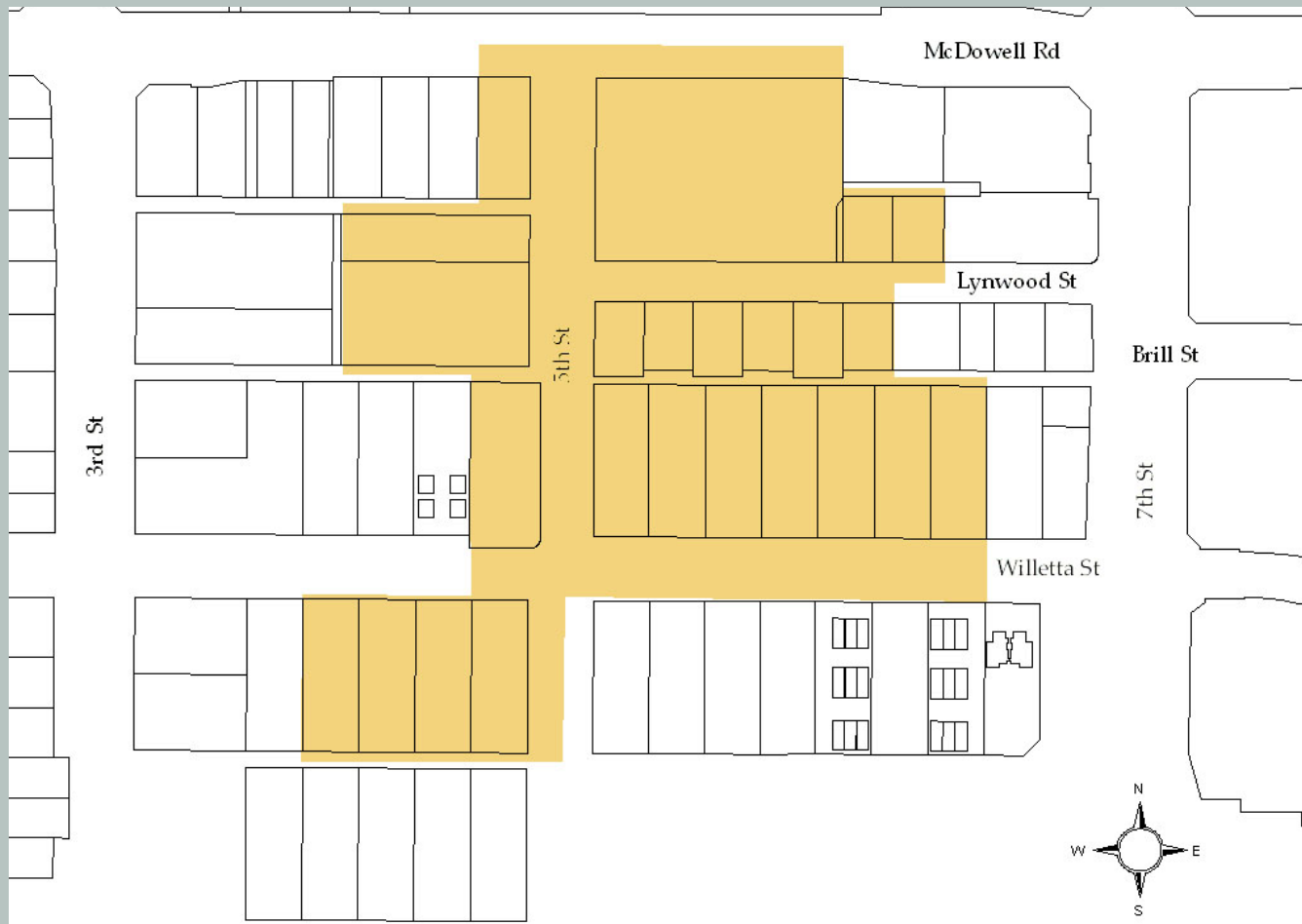
Fred B. Townsend was a prominent attorney, and one of the first planning commissioners of Phoenix. His home, at 504 E. McDowell Road, was just to the north of East Evergreen, directly across from the park named in his honor.

Col. James H. McClintock was a journalist and publisher, officer with Theodore Roosevelt's Rough Riders, scout involved with the site selection for Roosevelt Dam, and noted historian, best remembered for his three-volume history of Arizona published in 1916. His wife, Dorothy Bacon, was a botanist, and a founding member the Phoenix Library Association. The McClintocks owned a home in East Evergreen, at 323 E. Willetta St., and lived there from 1911 to 1934.



East Evergreen Historic District





Ownership within designated historic districts in the city of Phoenix carries with it both benefits and responsibilities. Exterior modifications and new development are subject to design review and approval through the Historic Preservation Office before permits can be issued. The Office also provides technical assistance to historic property owners and administers grants, when funds are available, for the preservation of historic properties.



City of Phoenix

PLANNING & DEVELOPMENT DEPARTMENT
 HISTORIC PRESERVATION OFFICE
 200 W. Washington St., 3rd floor
 Phoenix, AZ 85003
 (602) 261-8699

phoenix.gov/historic - historic@phoenix.gov

The activity that is the subject of this document has been financed in part with Federal funds from the National Park Service, U.S. Department of the Interior. However, the contents and opinions do not necessarily reflect the views or policies of the Department of the Interior, nor does the mention of trade names or commercial products constitute endorsement or recommendation by the Department of the Interior.

For more information or for a copy of this publication in an alternate format, contact Planning & Development at (602) 262-7811 voice / (602) 534-5500 TTY.

Graphic design by Motley Design Group, LLC
www.motleydesigngroup.com



East Evergreen Historic District

Phoenix, Arizona