



Stormwater Post-Construction Program

JANUARY 26, 2023



Staff Introductions



City of Phoenix

Tricia Balluff, Environmental Programs Coordinator

Heather Finden, Stormwater Post-Construction Program Manager

Eric Froberg, City Engineer

Keith Kesti, Engineering Supervisor

Christine Nuñez, Environmental Programs Coordinator

Outline



City of Phoenix



MS4 Permit Overview

Post-Construction Program Summary

Phoenix City Code Proposed Changes

- Chapter 32A – Grading and Drainage
- Chapter 32B – Floodplains
- Chapter 32C – Stormwater Quality Protection

Post-Construction Maintenance Plan Template



City of Phoenix

MS4 Permit Overview

The Municipal Separate Storm Sewer System (MS4) is the publicly owned system that collects and conveys stormwater, which is discharged untreated to surface waters.

Includes streets, curbs, gutters, catch basins, storm drains, etc.



Post-Construction Program



City of Phoenix



Develop a post-construction program that includes an inventory, inspection, maintenance, and tracking program for post-construction stormwater controls.

Post – Construction Program Applicability



City of Phoenix



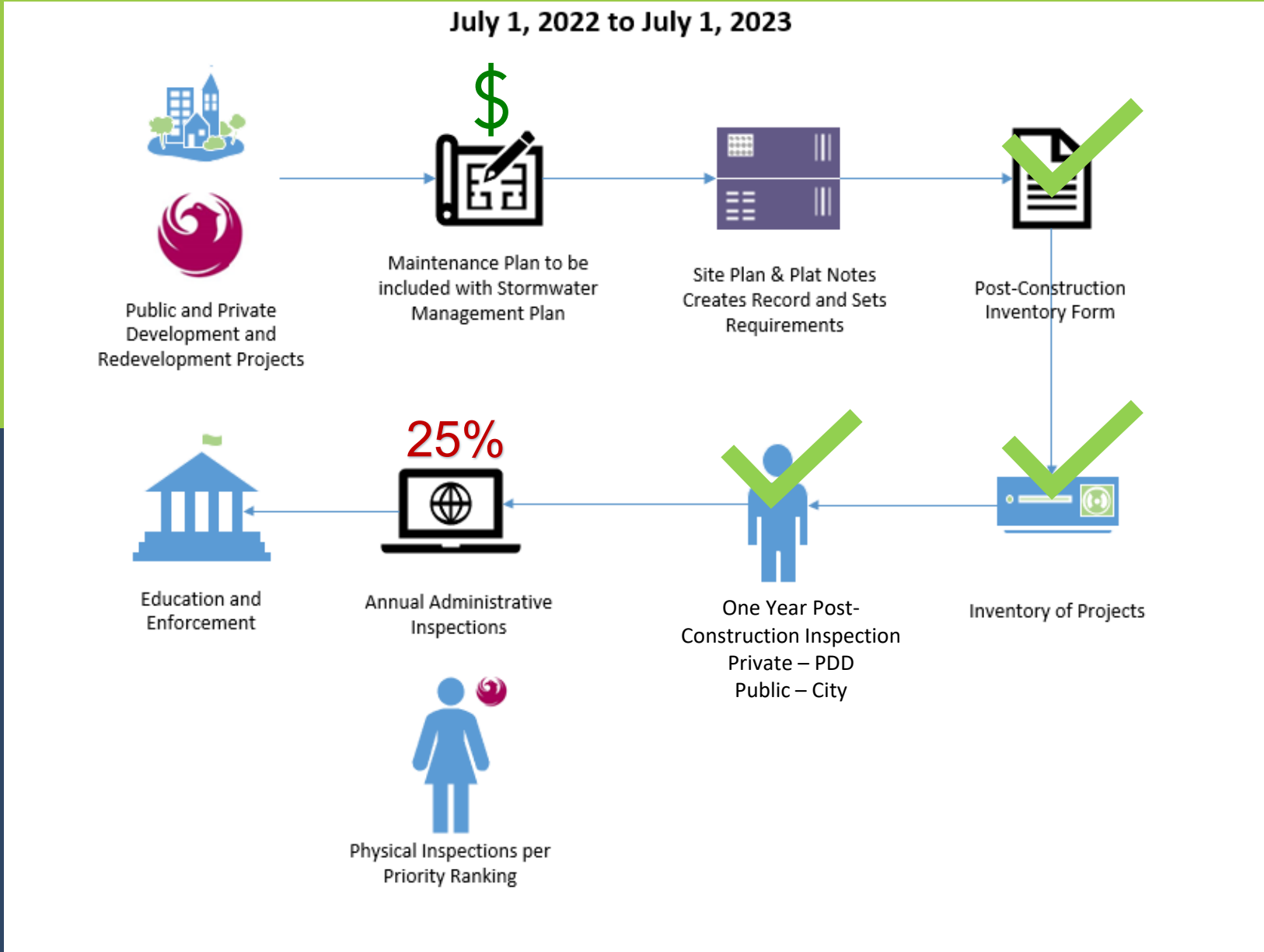
- 1) Project application was submitted on or after July 1, 2022.
- 2) Project disturbs one (1) acre or greater in size.
- 3) Project has a post-construction control.
- 4) Control discharges or has potential to discharge to the MS4.



Phase I



City of Phoenix

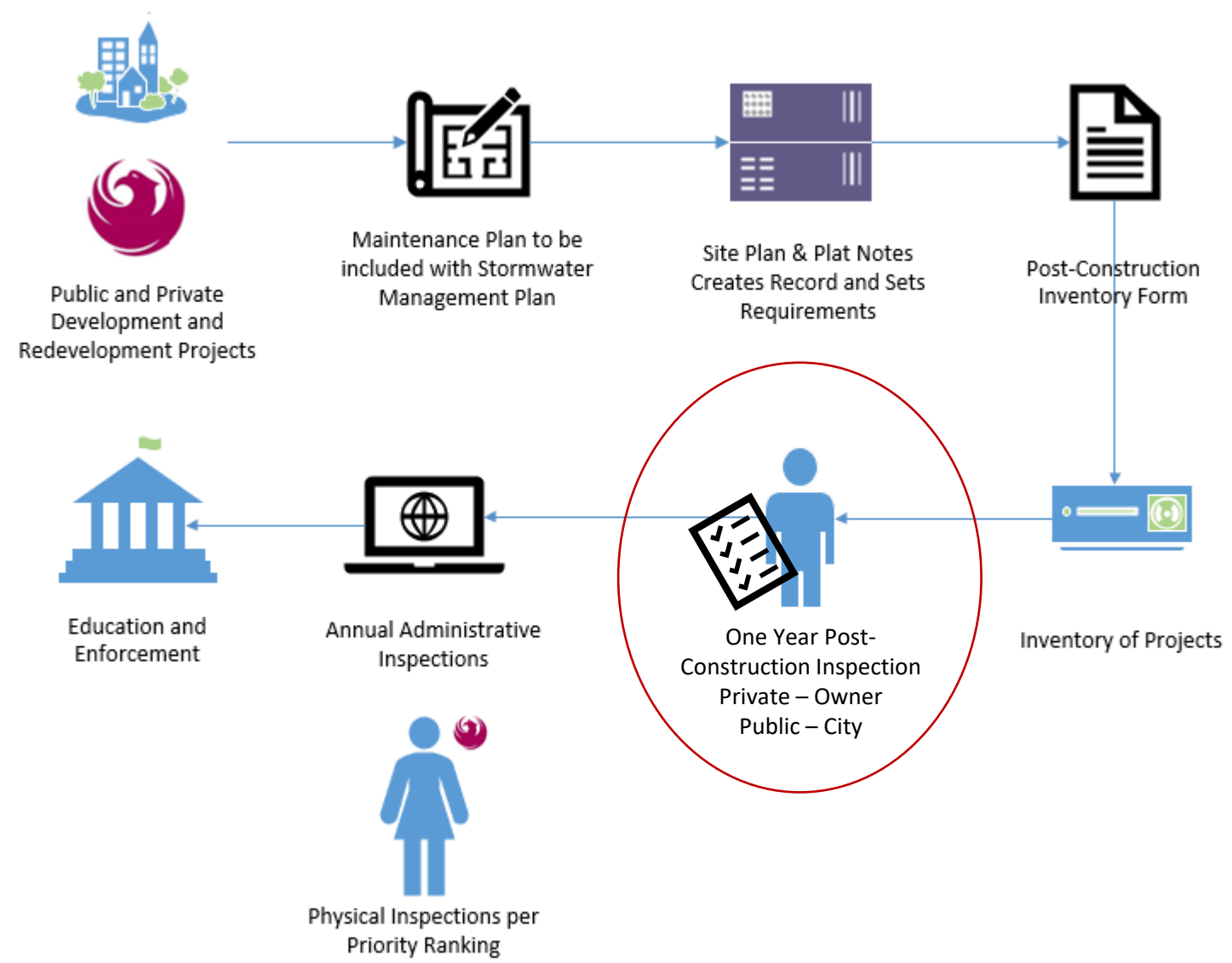


Phase II



City of Phoenix

July 1, 2023 to Future



Chapter 32A



City of Phoenix



Grading and Drainage

Summary of Changes



City of Phoenix

- Clarification of plan submittal requirements
- Corrections due to errors or word usage
- New MS4 permit requirements



Questions?



City of Phoenix

Chapter 32B



City of Phoenix



Floodplains

Summary of Changes



City of Phoenix

- Updates to correspond with federal and state rules and regulations
- Change Floodplain Administrator from Public Works to City Engineer
- Reorganization of sections for clarification



Questions?



City of Phoenix

Chapter 32C



City of Phoenix



Stormwater Quality Management

Summary of Changes



City of Phoenix

- Comply with MS4 permit requirements
- Update language for clarification
- Reorganization of sections
- Add post-construction program criteria for inspections, maintenance and, recordkeeping



Questions?



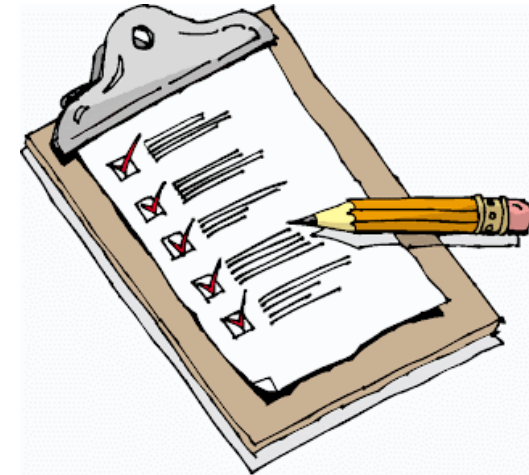
City of Phoenix

Maintenance Plan Template



City of Phoenix

- Electronic submittal
- City-provided template
- Report review fee
- List of planned post-construction controls
- Functionality criteria
- Routine/preventative and corrective maintenance
- Inspection forms – *Coming Soon*



“All drainage facilities owned and/or operated by private entities, including Homeowner's Associations, shall be properly maintained to promote performance of the drainage facilities consistent with the original design intent.” (Section 3.9.5)

1. INTRODUCTION
 - 1.1. Requirements
 - 1.2. Applicability
 - 1.3. Purpose of Maintenance Plan

2. PROJECT LOCATION AND SITE DESCRIPTION
 - 2.1. Location
 - 2.2. General Site Description
 - 2.3. Site Map

3. STORMWATER POST-CONSTRUCTION CONTROLS
 - 3.1. Inventory of Controls
 - 3.2. Description of Controls

4. MAINTENANCE
 - 4.1. Compliance
 - 4.2. Responsibility
 - 4.3. Maintenance Recommendations

5. INSPECTIONS AND MONITORING
 - 5.1. Purpose
 - 5.2. Safety and Equipment
 - 5.3. Inspection Procedures

6. REPORTING AND RECORDKEEPING
 - 6.1 Reporting
 - 6.2 Recordkeeping

Appendices

Appendix A: Design Plans (Grading and Drainage Plans)

Appendix B: Inspection Forms

Appendix C: Maintenance Forms



City of Phoenix

Review of Maintenance Plan Template

Questions?



City of Phoenix

Future Outreach



City of Phoenix

In-Person Open House
February 2, 2023 * 6 PM
Encanto Park Clubhouse
2605 North 15th Avenue

**Maintenance Plan Template Comments
by February 17, 2023.**

www.phoenix.gov/pdd/stormwater



Question and Comment Period



City of Phoenix



Feedback



City of Phoenix



City of Phoenix

myPHX311 PHX Pay Online Map It Find Public Records PHX Newsroom Translate

City of Phoenix > Planning and Development > Stormwater

Planning & Zoning Online Project Tools Commercial & Multifamily Residential Inspections Historic Preservation Maps SHAPE PHX Topics A-Z

Stormwater Post-Construction Program

Post-construction stormwater controls are used to limit surface runoff and reduce pollutant loadings and include features such as retention/detention basins, drywells, green stormwater infrastructure, and stormwater pretreatment devices.

While these devices are not new to development projects, new post-construction requirements in the City of Phoenix's Phase I Municipal Separate Storm Sewer System (MS4) permit were added by the Arizona Department of Environmental Quality. Effective July 1, 2022, the City of Phoenix has started implementation of a program to inventory, track, inspect, and confirm adequate maintenance of post-construction stormwater controls for public and private projects of one acre or more.

Contact us at postconstruction.storm@phoenix.gov, call 602-534-1672 (voice), or 7-1-1TTY.

Resources

- [Link to HOA Postcard](#)
- [Frequently Asked Questions PDF](#)
- [Stormwater Post-Construction Program Fact Sheet PDF](#)
- [Stormwater Post-Construction Program Inventory Form PDF](#)

Program Overview

This will allow the City to maintain compliance with the Arizona Department of Environmental Quality's (ADEQ's)

Upcoming Events

Public Information Session
Thursday, September 22, 2022
Virtual Meeting
10:00 AM
RSVP: Postconstruction.storm@phoenix.gov
[Register for event](#)

Thank you!



City of Phoenix

Take A Quick Survey

<https://www.surveymonkey.com/r/DCDKSMW>

Contact Us

Postconstruction.storm@phoenix.gov

602-534-1672 (office)

www.phoenix.gov/pdd/stormwater

