

Landscape Maintenance TA

City of Phoenix Planning & Development Department

March 30, 2022 Overview w/ AZASLA

Joshua Bednarek / Tricia Gomes / Christopher DePerro / Jackie Keller, RLA / Michael Eagan, RLA



Agenda

- 1. Introductions**
- 2. Overview of Landscape Maintenance TA (Z-TA-5-15)**
- 3. Q & A / Discussion**

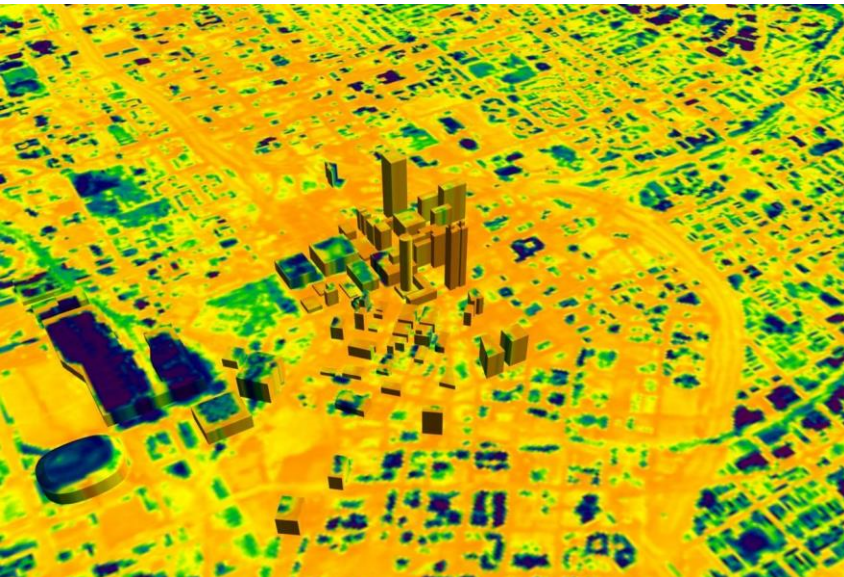
Z-TA-5-15 (Landscape Maintenance TA)

Approved by the Phoenix City Council on June 16, 2021



Why did we propose the TA?

- City Council driven – 3 phased approach
- Addresses longstanding policy goals / initiatives



City of Phoenix
Tree and Shade
Master Plan

Today

VISION

Tomorrow

What did the Text Amendment do?

A: Strengthened existing Zoning Ordinance provisions and codifies best practices by embracing 3 Core Concepts

- **Trees are Infrastructure**
- **Trees provide benefits when appropriately planted**
- **Trees should be kept in place in a healthy and living condition**

What did the Text Amendment do?

Chapter 5 (Trees are infrastructure), (Trees provide benefits when appropriately planted)

- **Site inspection and certificate of occupancy**
- **Validity of approved review documents**
- **Design Guidelines**
- **Plant Materials**

What did the Text Amendment do?

Chapter 7 (Trees should be kept in place in a healthy and living condition)

- **Landscape removal standards**
- **Required landscape and maintenance plans**



Maintenance Plans

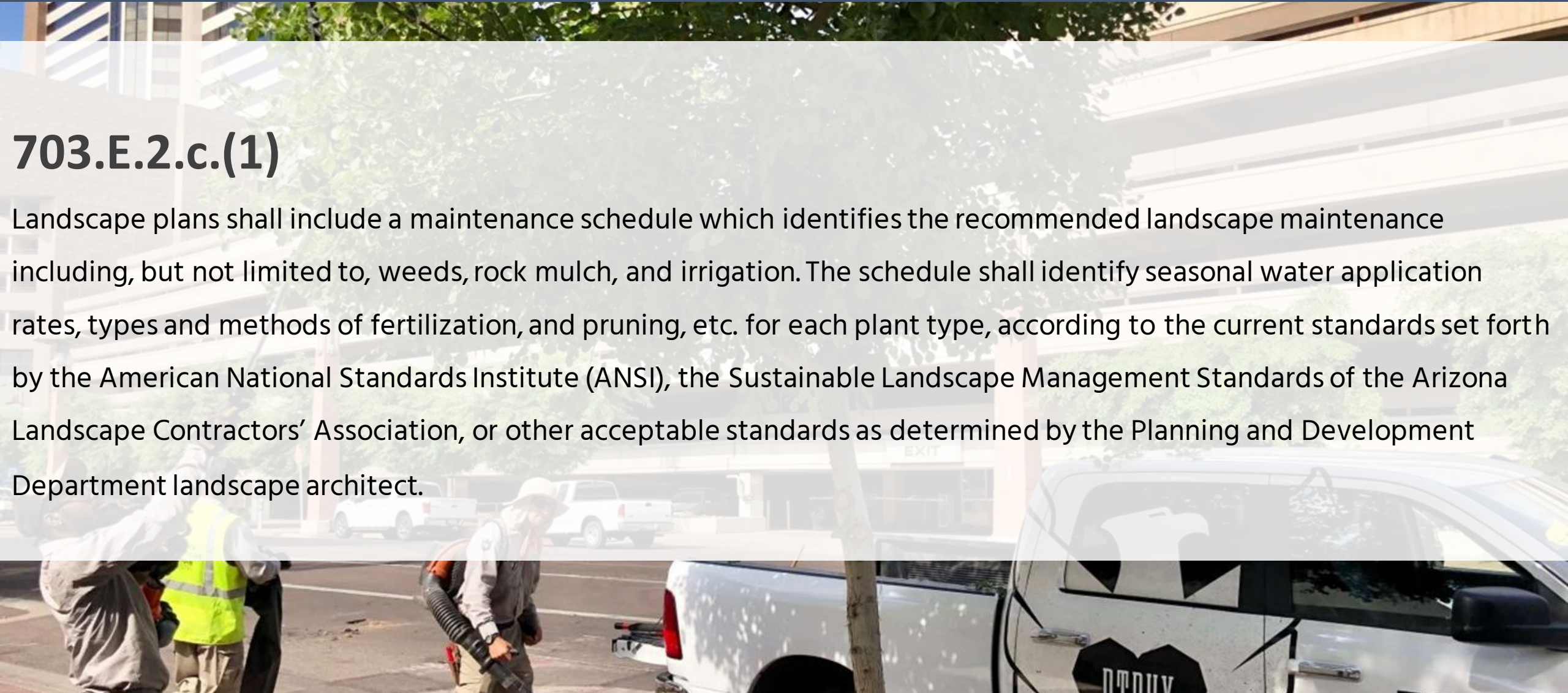
703.E.2.c

Landscape (installation) plan: Identifies the types, sizes, and locations of all trees, cacti, and plants (including those to remain/protect in place or salvaged) to be installed on the site, on documents sealed by a landscape architect registered in the State of Arizona. Landscape plans are to also include all landscape materials, a maintenance schedule, irrigation plans, plus other information as may be required by Planning and Development staff. Plant material sizes and specifications must conform to the standards of the American Standards for Nursery Stock (ANSI Z60.1) or the Arizona Nursery Association.

Maintenance Plans cont'd

703.E.2.c.(1)

Landscape plans shall include a maintenance schedule which identifies the recommended landscape maintenance including, but not limited to, weeds, rock mulch, and irrigation. The schedule shall identify seasonal water application rates, types and methods of fertilization, and pruning, etc. for each plant type, according to the current standards set forth by the American National Standards Institute (ANSI), the Sustainable Landscape Management Standards of the Arizona Landscape Contractors' Association, or other acceptable standards as determined by the Planning and Development Department landscape architect.



Maintenance Plans cont'd

703.E.2.c.(1)

Landscape plans shall include a maintenance schedule which identifies the recommended landscape maintenance including, but not limited to, weeds, rock mulch, and irrigation. The schedule shall identify seasonal water application rates, types and methods of fertilization, and pruning, etc. for each plant type, according to the current standards set forth by the American National Standards Institute (ANSI), the Sustainable Landscape Management Standards of the Arizona Landscape Contractors' Association, or other acceptable standards as determined by the Planning and Development Department landscape architect.

Thank You



Questions