

South Central TOD Steering Committee



December 17, 2019



Today's Itinerary

- Welcome + Announcements
- Steering Committee Guided Tour
- Goals and Measurable Outcomes Presentation
- Public Comment





Kind reminders:

- Be mindful of the interpreter.
- When discussing issues raise your hand and wait to be called by the Chair.
- Pace your statements, fast talk is very difficult to follow and repeat simultaneously.



City of Phoenix

South Central Website:

<https://www.phoenix.gov/pdd/tod/south-central>
<https://www.phoenix.gov/pdd/tod/south-central-spanish>



SOUTH CENTRAL TRANSIT ORIENTED DEVELOPMENT (TOD) STEERING COMMITTEE

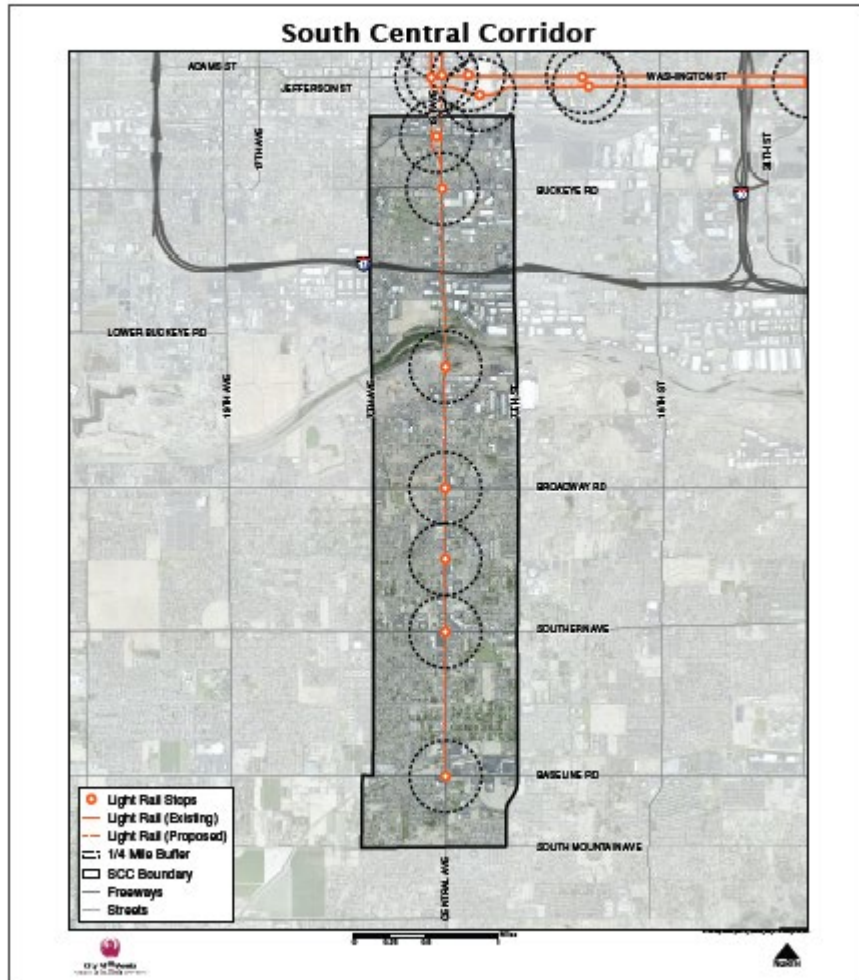


(eTOD)

1 What area are we talking about? ¿De qué área estamos hablando?

The “Planning” project boundary is from 7th Avenue to 7th Street (West and East), and the Railroad tracks just south of Jefferson Street to South Mountain Avenue (North and South)

El límite del proyecto de “planificación”. Los límites del área son de 7 avenida a calle 7 (de este a oeste), y las vías del ferrocarril al sur de la calle Jefferson a la avenida South Mountain (de norte a sur)





SOUTH CENTRAL CORRIDOR EQUITABLE TRANSIT ORIENTED DEVELOPMENT (eTOD)



2 What are we here to do?

- The Steering Committee will **develop a TOD policy plan** specific to the South Central corridor.
- The Plan will serve to **attract, guide, and prioritize strategic investments to realize a shared community vision** for the future of the corridor.
- Steering Committee members **guide in developing a community vision and implementation strategies**.
- Steering Committee members also **advocate for and play a direct role in implementing the plan**.

¿Qué estamos aquí para hacer?

- El Comité Directivo desarrollará un plan de políticas específico para el corredor del TOD Sur Central.
- El Plan servirá para atraer, guiar y priorizar inversiones estratégicas para lograr una visión comunitaria compartida para el futuro de la area
- Los miembros del Comité Directivo guían el desarrollamiento de una visión comunitaria y estrategias de implementación.
- Los miembros del Comité Directivo también abogan por y desempeñan un rol directo en implementación del plan.

** Committee's tasks DO NOT involve discussions or decision making regarding the design and construction of the light rail extension.*

** Las tareas del comité NO involucran discusiones o toma de decisiones con respecto al diseño y construcción de la extensión del tren ligero.*

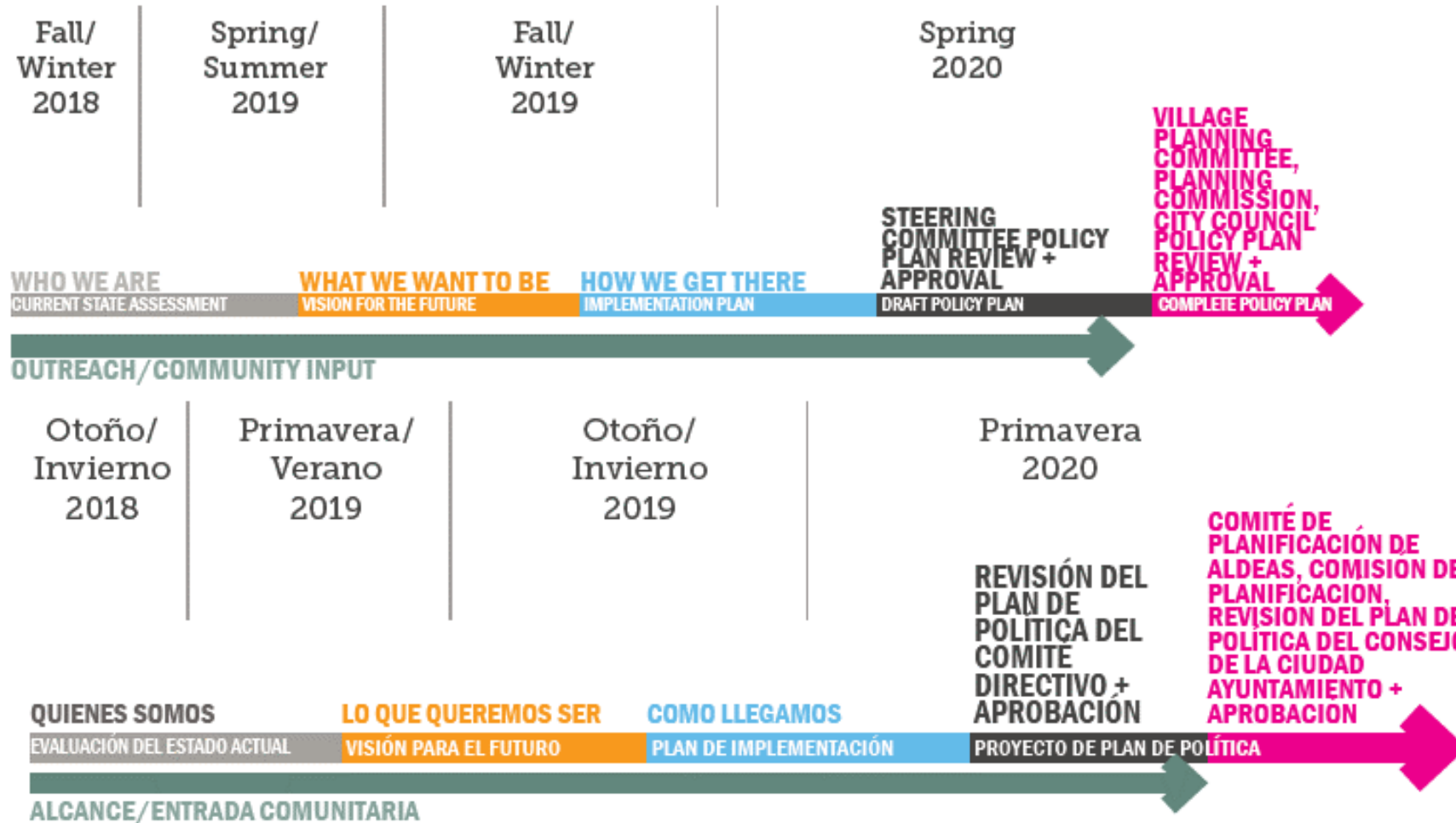


SOUTH CENTRAL CORRIDOR EQUITABLE TRANSIT ORIENTED DEVELOPMENT (eTOD)



3

Where are we at in the process? ¿Dónde estamos en el proceso?



We have dedicated the Summer months to discuss the “Where we want to be” and the fall/winter months to discuss “How we get there”

Hemos dedicado los meses de verano para discutir "Donde queremos estar" y los meses de otoño/invierno para discutir "Como llegamos allí"



Meeting Agenda



Introduction + Announcements



Meeting Agenda



**Review and approval of
Oct. 5 + Oct. 17, 2019
Minutes**



Meeting Agenda



**Steering Committee Guided Tour
November 4 + 5, 2019
South Central Corridor public meetings**



Steering Committee Guided Tour

- Please keep arms and legs inside the moving vehicle at all times
- Please no flash photography
- Do not feed the animals!
- Watch your step
- Have fun!!!



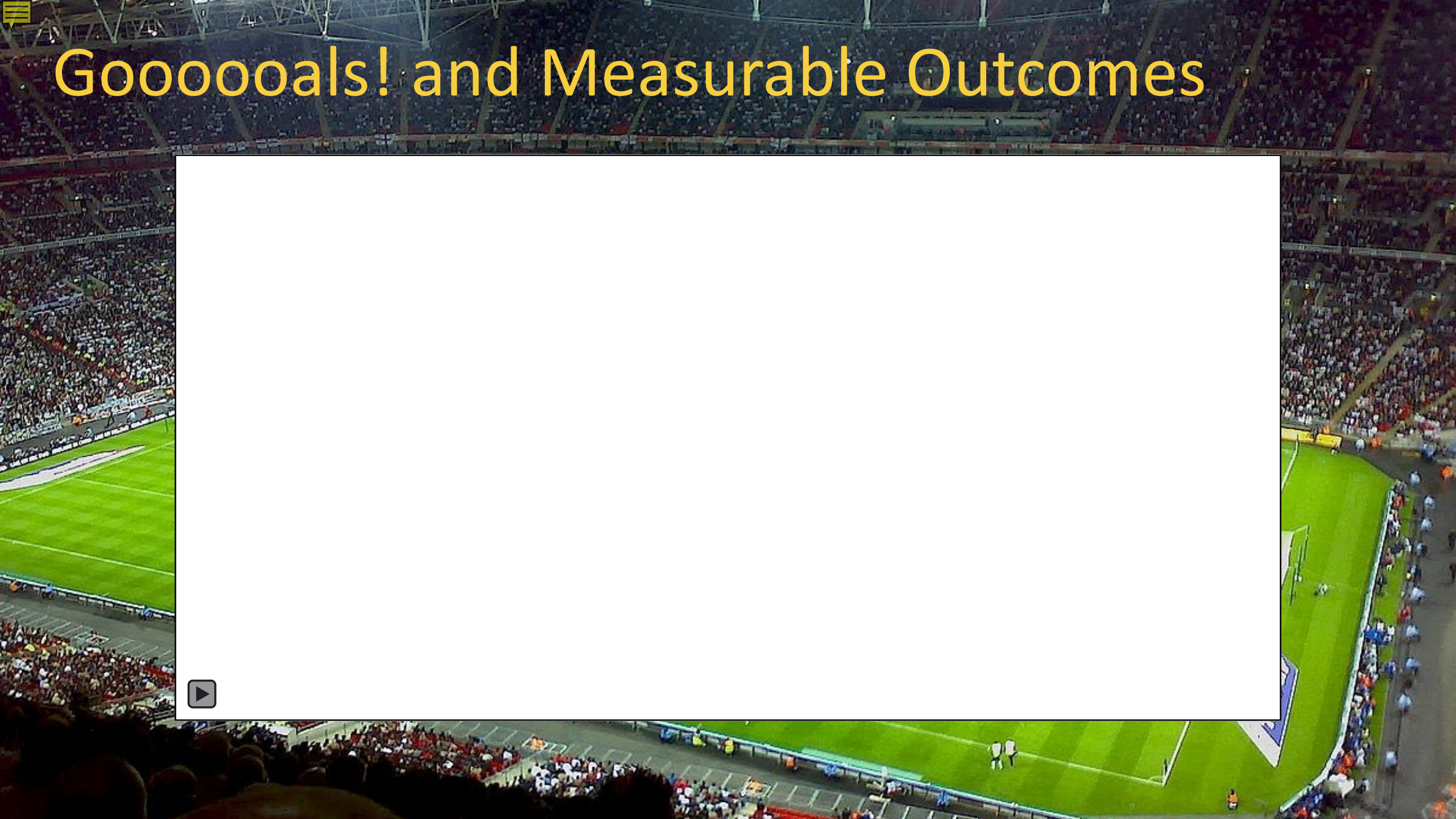
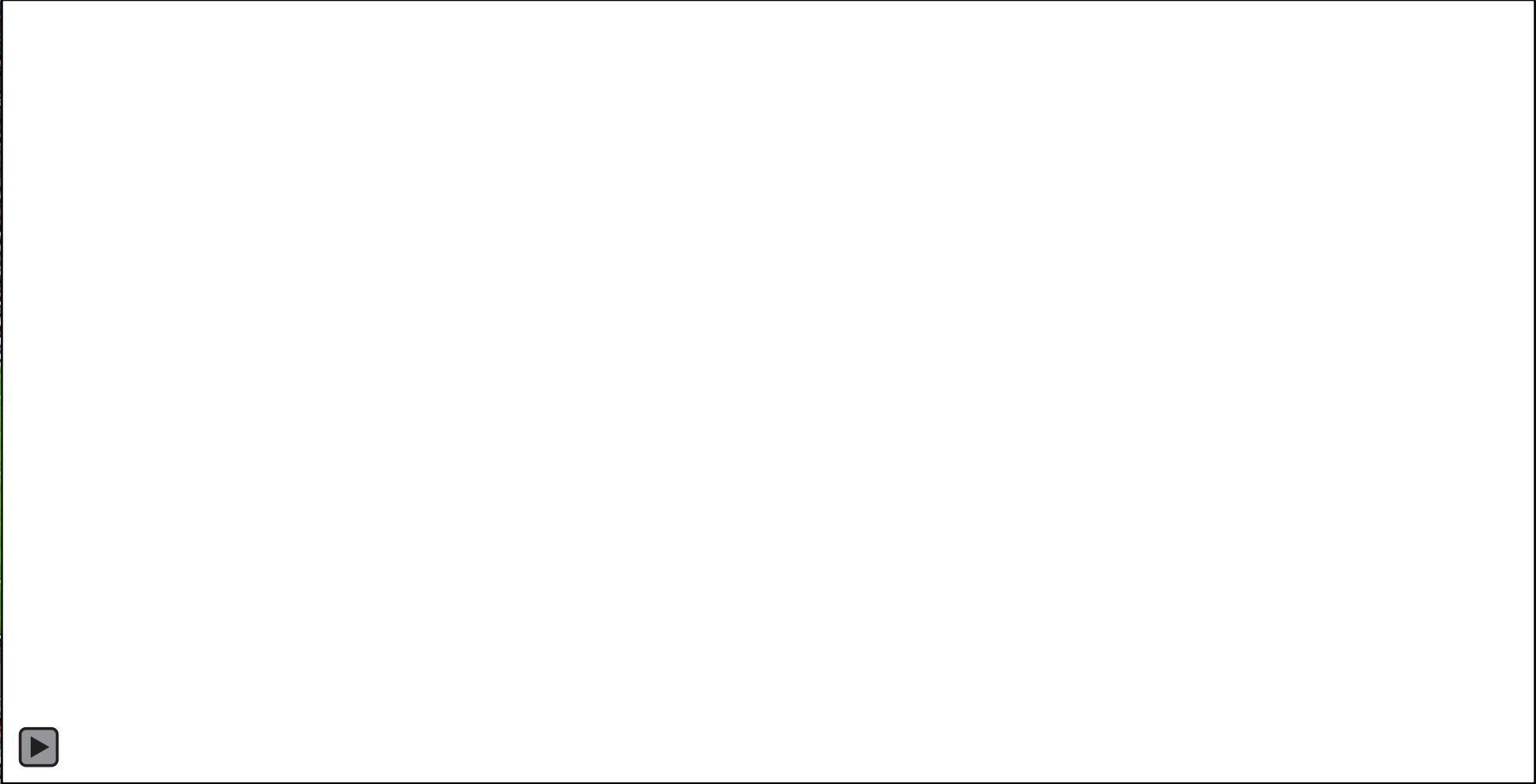


Meeting Agenda



Presentation
Goals + Measurable Outcomes

Goooooals! and Measurable Outcomes





What are some measurables for the **Health** goals?



- Healthy food access
- Access to recreational amenities
- Safe and comfortable places to walk and bicycle





Improved Walk Scores



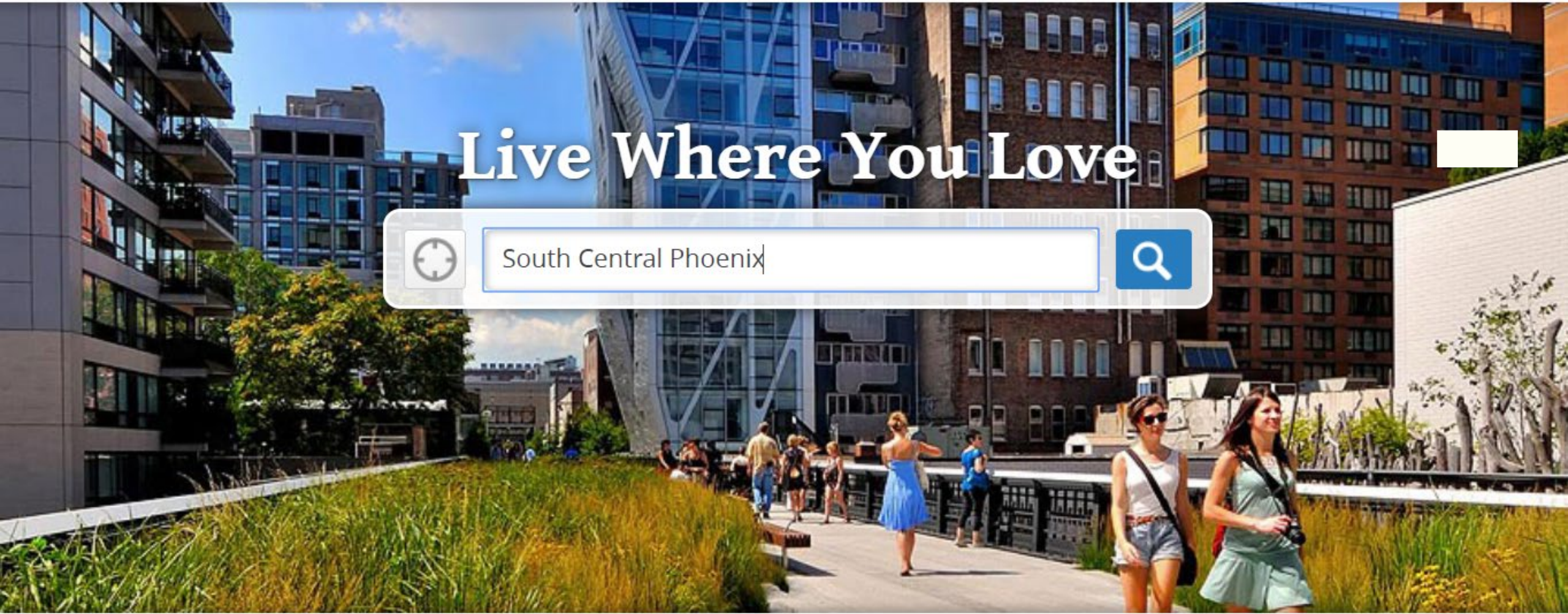
[Get Scores](#)

[Find Apartments](#)



[My Favorites](#)

[Add to Your Site](#)

[Log in](#) ▼



Live Where You Love

Walk Score

44

WHO WE ARE CURRENT STATE ASSESSMENT

85040 is a Car-Dependent neighborhood

Most errands require a car.

WHAT WE WANT TO BE VISION FOR THE FUTURE

85040 is a Walker's Paradise

Most errands do not require a car.

Walk Score

100





What are some measurables for the **Health** goals?



- Healthy food access
- Access to recreational amenities
- Safe and comfortable places to walk and bicycle





Healthy Food Access



% of households within a 1/4 mile walk to healthy food options

Recreation Access



% of households within a 1/4 mile walk to recreation options

Local food providers, Urban farms, Local procurement for schools



What are some measurables for the **Mobility** goals?



- Quality Transportation Choices
- Sidewalks + Block Patterns, Canals + Trails, Street Improvements
- Reduced Automobile Dependence
- Efficient and Compatible Parking





Intersections per square mile



Linear miles of bike lanes

What are some measurables for the **Green Systems** goals?

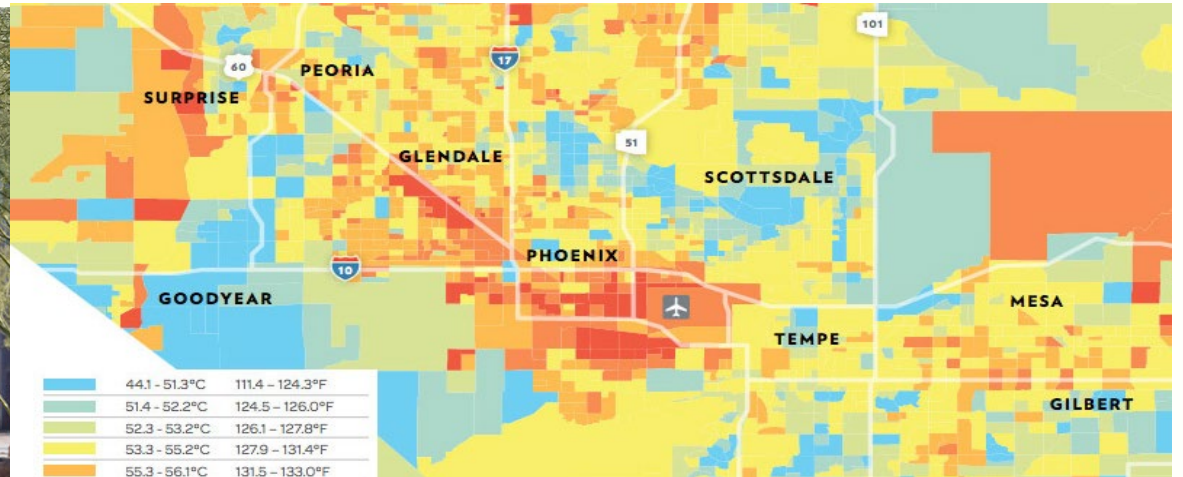


- Stormwater Harvesting and Management
- Urban Heat Island/ Surface Temperatures
- Efficient Water Use





Tree Coverage



% Surface Temperatures over 130 in July



What are some measurables for the **Housing** goals?



- Access to Affordable Housing
- Low Cost of Living
- High Quality Housing
- Diverse Neighborhoods





% of income spent on housing



% of low income households with housing cost burden

What are some measurables for the **Economic Development** goals?



- Access to Quality Education
- Access to Quality Careers
- Strong Local Businesses
- Financially Stable Residents





Commercial Vacancy



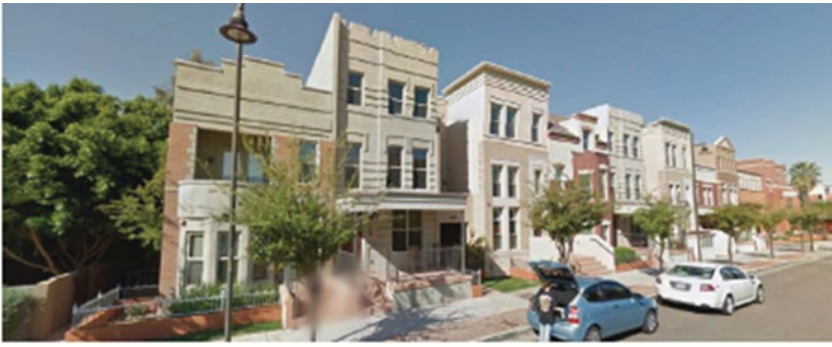
Unemployment



What are some measurables for the Land Use goals?



- Convenient Neighborhood Amenities
- Efficient Infrastructure and Public Services
- Authentic Culture and Character
- High Quality Urban Development





Walkscore



Vacant land



Meeting Agenda



Public Comment



Meeting Agenda



Committee member announcements, requests for information, follow up, or future agenda items.



Meeting Agenda



Adjournment



Please visit us at:

<https://www.phoenix.gov/pdd/tod/south-central>

<https://www.phoenix.gov/pdd/tod/south-central-spanish>