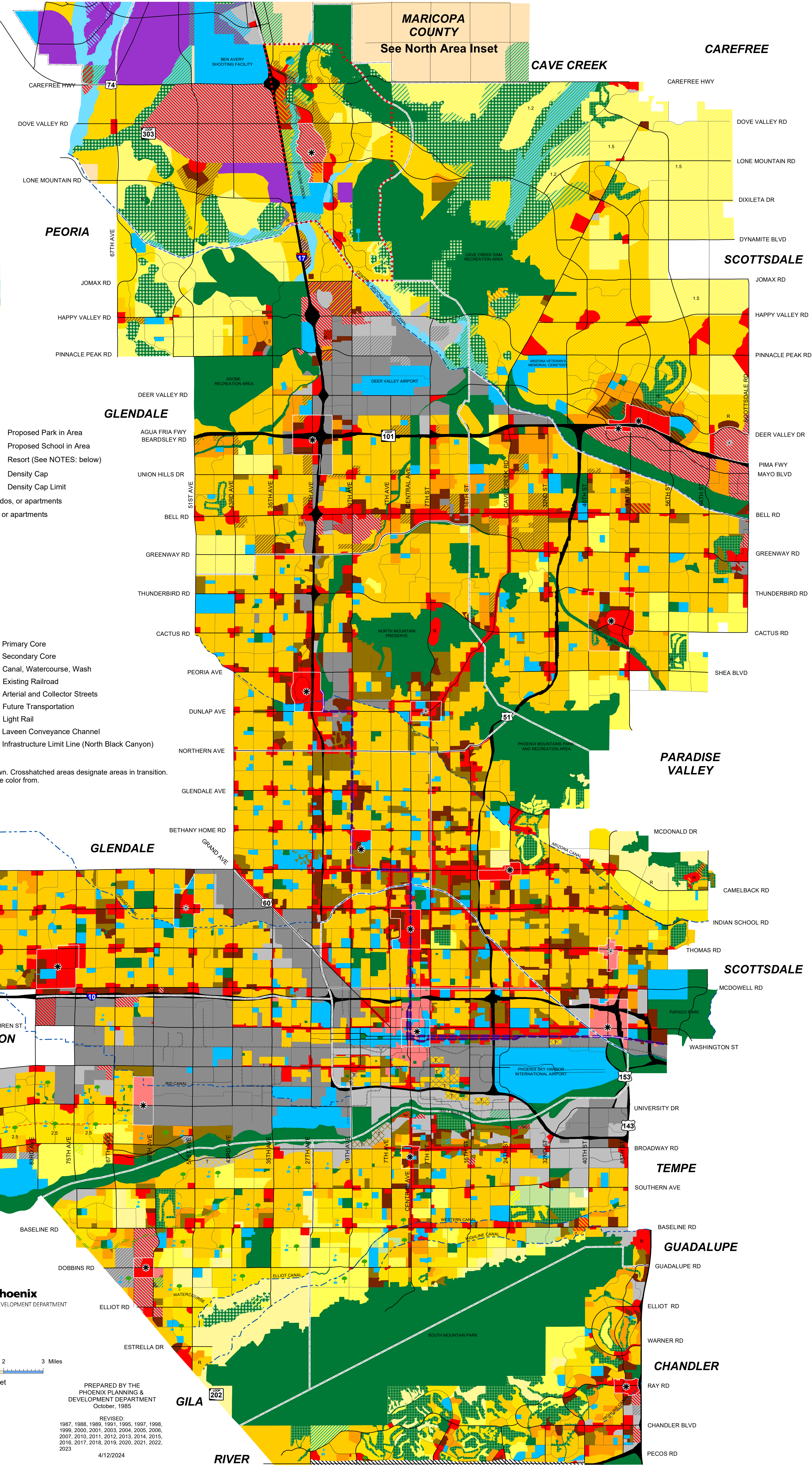
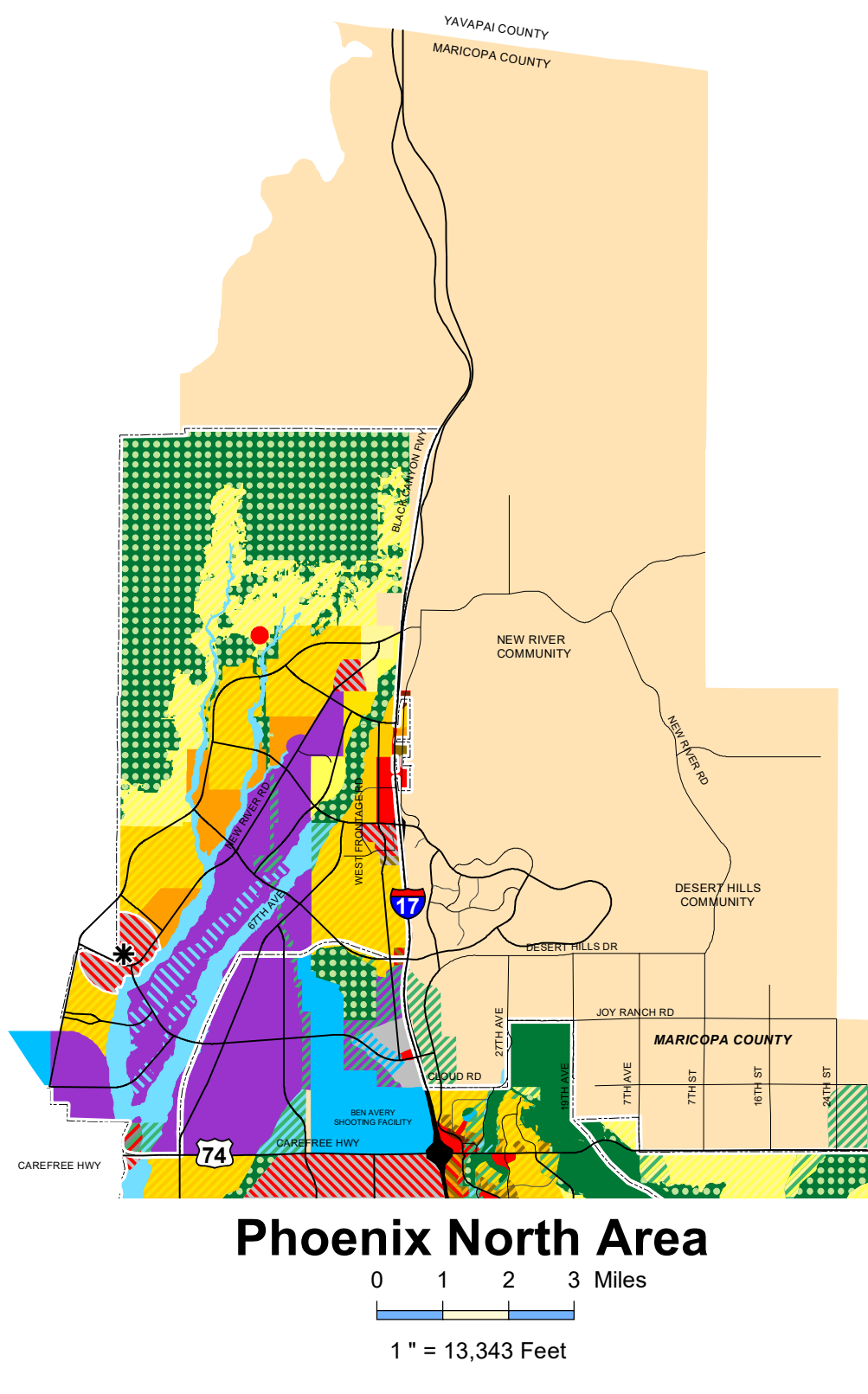


CITY OF PHOENIX GENERAL PLAN

A Vision for the Future



LEGEND

- LAND USE**
- 0 to 1 du/acre - Large Lot
 - 1 to 2 du/acre - Large Lot
 - 2 to 3.5 du/acre - Traditional Lot
 - 3.5 to 5 du/acre - Traditional Lot
 - 5 to 10 du/acre - Traditional Lot
 - 10 to 15 du/acre - Higher density attached townhouses, condos, or apartments
 - 15+ du/acre - Higher density attached townhouses, condos, or apartments
 - Parks/Open Space - Publicly Owned
 - Parks/Open Space - Privately Owned
 - Future Parks/Open Space or 1 du/acre
 - Mixed Use Agricultural
 - Nurseries/Flower Gardens with alternative 3.5 to 5 du/acre
 - Commercial
 - Mixed Use (MU)
 - Mixed Use (Areas C, D and Northwest Area only)
 - Industrial
 - Commerce / Business Park
 - Public/Quasi-Public
 - Floodplain
 - Undesignated Area
- NOTE:**
Movement within large lot, traditional lot and higher density residential categories does not require a General Plan amendment.
- Proposed Park in Area
 - Proposed School in Area
 - R Resort (See NOTES: below)
 - Density Cap
 - Density Cap Limit
- * Primary Core
 - * Secondary Core
 - Canal, Watercourse, Wash
 - Existing Railroad
 - Arterial and Collector Streets
 - Future Transportation
 - Light Rail
 - Laveen Conveyance Channel
 - Infrastructure Limit Line (North Black Canyon)

NOTES:
1 Striped areas designate optional uses corresponding to colors shown. Crosshatched areas designate areas in transition. Color in crosshatch is the color to, color between the crosshatch is the color from.

