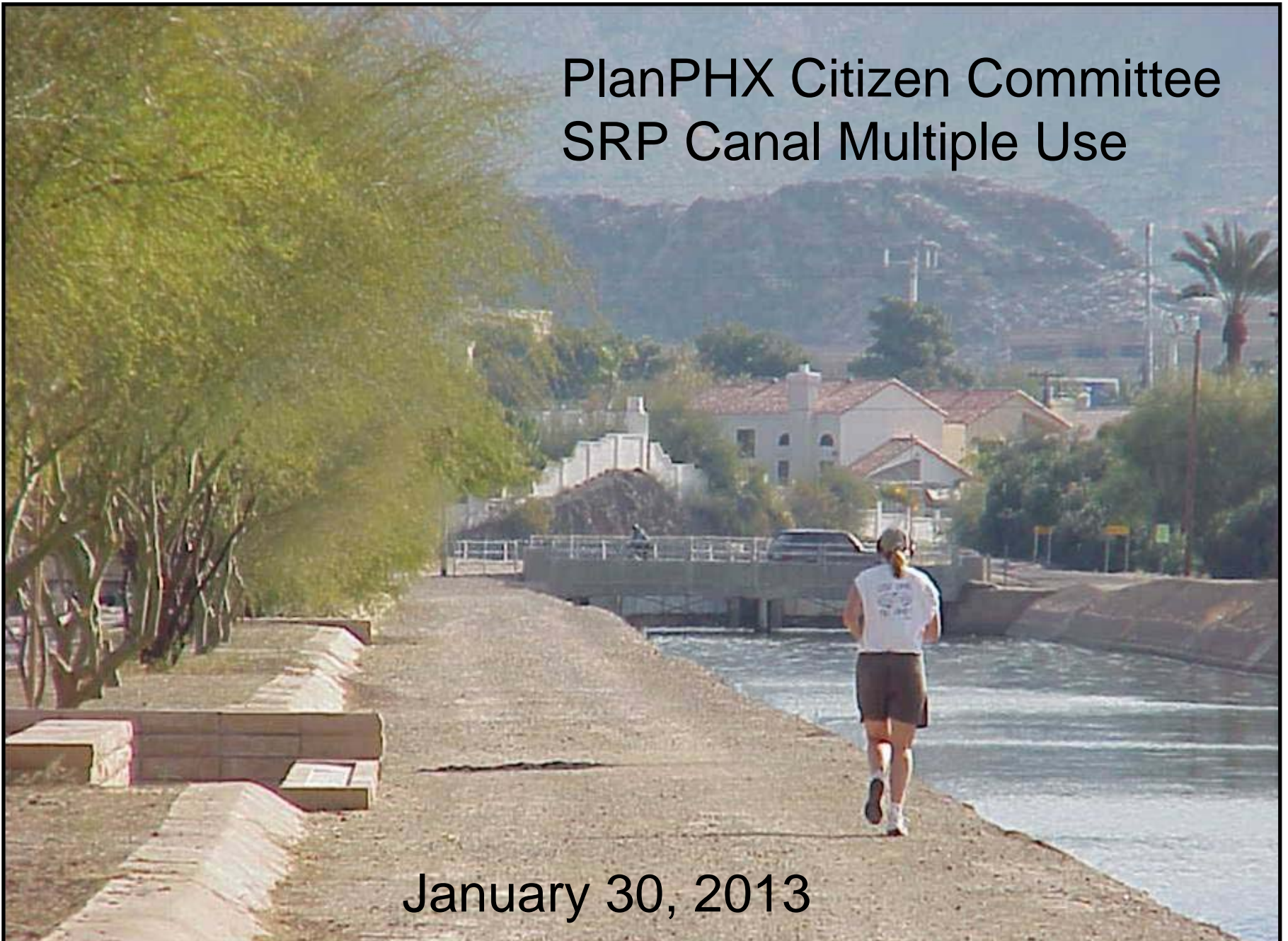


PlanPHX Citizen Committee SRP Canal Multiple Use



January 30, 2013

Permitted Uses of the SRP Canal Banks

- Recreational activity – Non motorized
- Beautification, landscaping, public art
- Limited commercial activity
- Special events
 - Bike & Running Events
 - Public Art Events
 - Festivals & Craft Fairs



Canal Multiple Use Principles Mandated by SRP Board & U.S.B.R.

1. Reimbursement of incremental costs of operations and maintenance.
2. Paramount Rights of the USA.
3. Non-exclusive.
4. Indemnification of SRP and USA.
5. Public Access.
6. Revocability.
7. Water Quality.
8. Insurance provided by Licensee.
9. Government agency as Licensee.
10. Compatibility with Water and Power O&M.



*P. O. Box 52025
Phoenix, AZ 85072-2025
(602) 236-5900
www.srpnet.com*

**General Design and Process Guidelines for Proposed Public Amenities on SRP Canal
Rights-of-Way and Adjacent to SRP Power Easement**

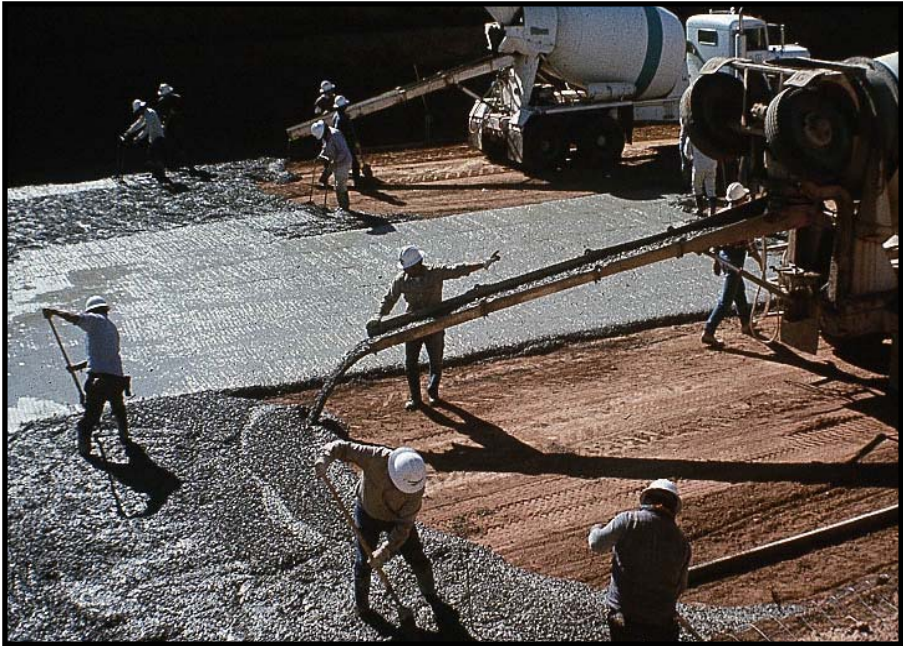
SRP Land Department
Revised August 21, 2008

SRP allows for the construction of public recreational amenities by municipalities within SRP canal right of way (ROW) if the improvements are compatible with SRP's Operations and Maintenance requirements for the canal and the electrical facilities. These improvements are known as Canal Multiple Use. These amenities include landscape, hardscape, and associated improvements specifically for the use by the general public for recreational use.

These improvements must be reviewed and approved by SRP. The right to install improvements will be granted via a Land Use License issued by SRP and in some cases may require a Consent to Use of Easement if improvements fall within an SRP power easement. Construction may begin only after execution of the agreements and receiving written approval from SRP that all plans of the proposed improvements have been approved by SRP.

Water & Power design guidelines were developed and are distributed to Cities and their design consultants at each kick-off CMU project planning meeting.

Water and Power O&M



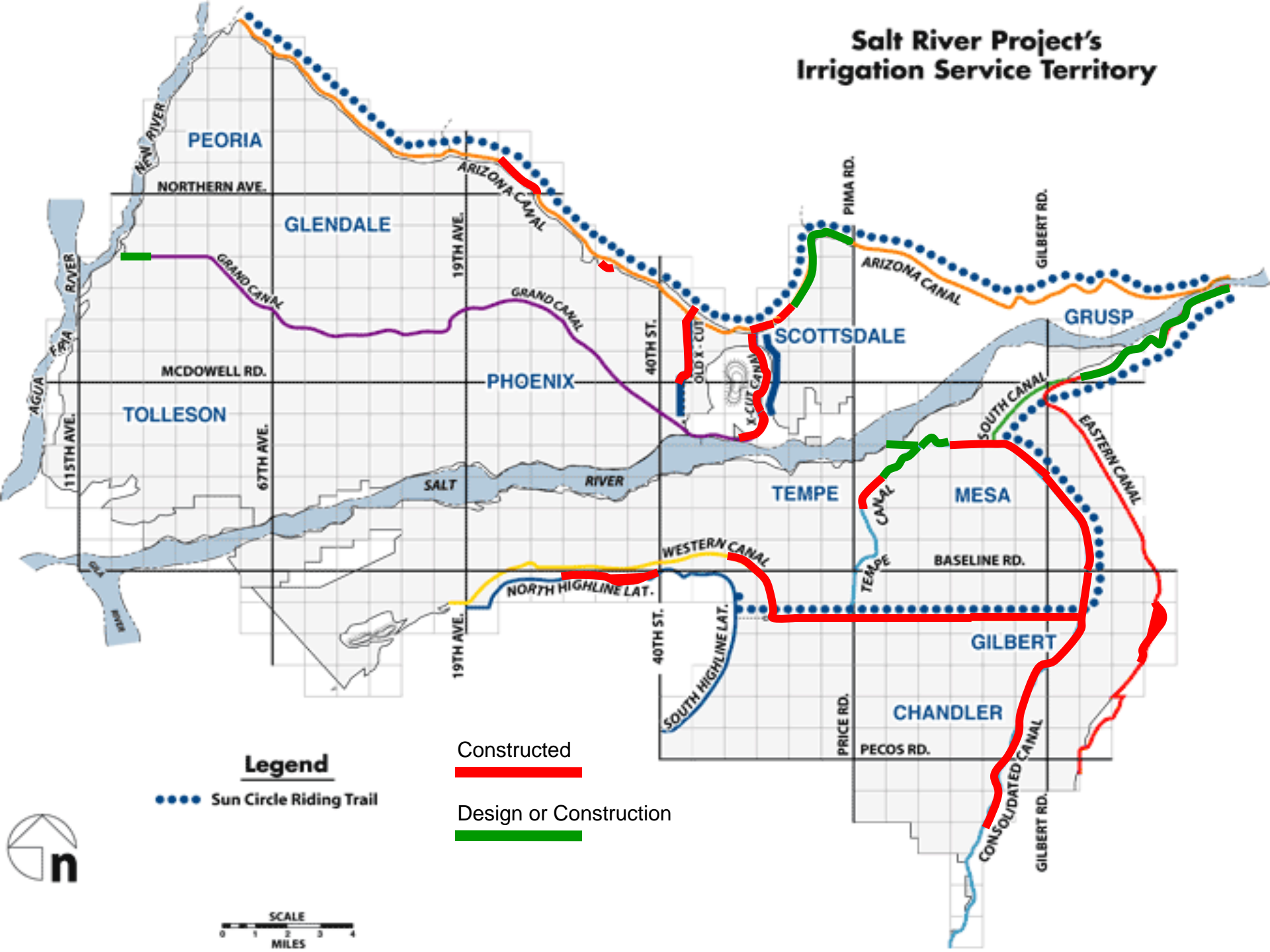
Water & Power Operations & Maintenance



Multi-Use Trail Statistics

- 43 Miles of improved trail completed
- 6 Miles in design or construction
- Average cost per mile – 1.1 million
- Funding sources:
 - City - 5 - 15%
 - Federal Transportation Funds
 - Stimulus Funds
 - Air Mitigation Funds (CMAAQ)
 - SRP Aesthetics Funds

Salt River Project's Irrigation Service Territory



Legend

●●● Sun Circle Riding Trail

— Constructed

— Design or Construction





Scottsdale Canal Path north of Thomas



Tempe Centerline Multi-use Path
McDowell south to Marigold



City of Tempe
Cross Cut Canal Path

Connection of
Scottsdale & Tempe

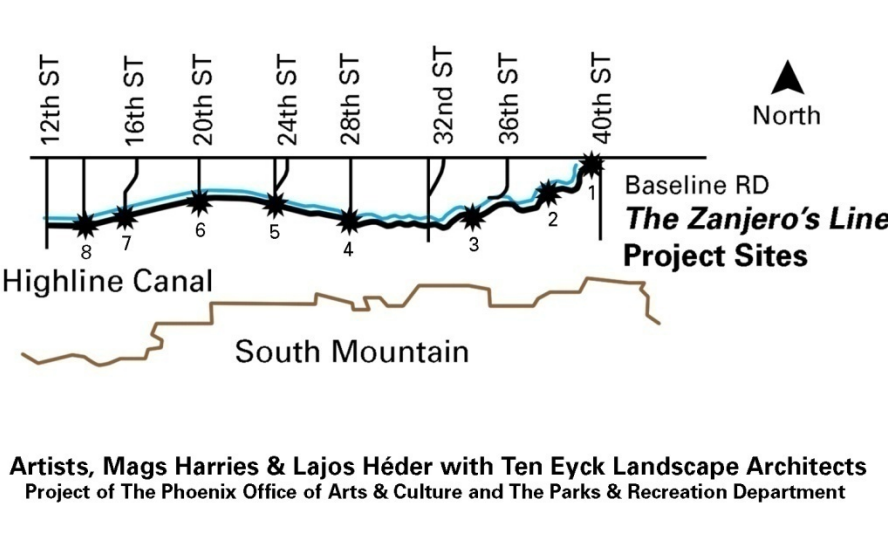
Chandler Paseo Project

Galveston - Queen Creek



Paved trail including decorative concrete and art features.





Scottsdale Waterfront





Soleri Bridge & Plaza

Special Events At Scottsdale Waterfront





Scottsdale Public Art
The Art
of
Maintenance



Canal Convergence and Fish Herding Events



Canal Art During Dryup



SRP Groundwater employees provided information to the public regarding the White Amur fish program.

SRP mascot Dewey provided water safety information to spectators.





Fausto Fernandez – Flowing Overlapping



Canal Multiple Use on the SRP Canal System
Water 101 July 11, 2012