



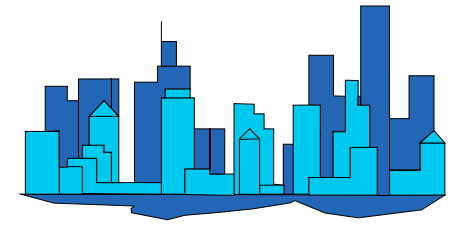
City of Phoenix

Monthly Count Of Actual Offenses Known To Police

Part 1 Crimes

By Uniform Crime Reporting (UCR) Classifications

Calendar Year 2019



	JAN	FEB	MAR	1st QTR TOTAL	APR	MAY	JUN	2nd QTR TOTAL	JUL	AUG	SEP	3rd QTR TOTAL	OCT	NOV	DEC	4th QTR TOTAL	2019 YEAR TO DATE TOTAL
Criminal Homicide	9	12	9	30	18	13	13	44	10	11	8	29	7	13	16	36	139
a. Murder and Non-Negligent Manslaughter	8	12	8	28	18	11	13	42	9	9	8	26	6	13	16	35	131
b. Manslaughter by Negligence	1	0	1	2	0	2	0	2	1	2	0	3	1	0	0	1	8
Total Rape	93	72	88	253	108	96	93	297	78	109	112	299	109	92	89	290	1,139
a. Rape	88	69	82	239	98	87	90	275	71	101	96	268	103	87	85	275	1,057
b. Attempts to commit rape	5	3	6	14	10	9	3	22	7	8	16	31	6	5	4	15	82
Robbery	328	242	217	787	246	249	282	777	257	282	266	805	268	276	284	828	3,197
a. Firearm	138	110	69	317	72	90	104	266	96	95	105	296	92	116	124	332	1,211
b. Knife or Cutting Instrument	39	27	32	98	31	35	23	89	33	36	22	91	38	26	29	93	371
c. Other Dangerous Weapon	25	17	31	73	21	27	31	79	26	27	28	81	25	25	20	70	303
d. Strong-Arm (hands, fists, feet, etc.)	126	88	85	299	122	97	124	343	102	124	111	337	113	109	111	333	1,312
Aggravated Assault	516	493	634	1,643	597	599	636	1,832	649	643	667	1,959	633	617	652	1,902	7,336
Total Violent Crimes	946	819	948	2,713	969	957	1,024	2,950	994	1,045	1,053	3,092	1,017	998	1,041	3,056	11,811
Burglary	816	684	824	2,324	827	893	857	2,577	821	814	730	2,365	775	723	707	2,205	9,471
a. Forcible Entry	595	510	579	1,684	596	635	609	1,840	592	623	548	1,763	569	512	515	1,596	6,883
b. Unlawful Entry - No Force	167	133	168	468	166	206	179	551	175	141	145	461	152	157	156	465	1,945
c. Attempted Forcible Entry	54	41	77	172	65	52	69	186	54	50	37	141	54	54	36	144	643
Larceny - Theft	3,559	3,100	3,188	9,847	3,220	3,511	3,299	10,030	3,213	3,180	3,123	9,516	3,350	3,118	3,566	10,034	39,427
Motor Vehicle Theft	557	475	528	1,560	577	637	644	1,858	631	620	572	1,823	646	543	646	1,835	7,076
a. Autos	418	354	388	1,160	414	454	487	1,355	481	464	423	1,368	457	396	457	1,310	5,193
b. Trucks and Buses	123	80	95	298	106	139	97	342	100	105	102	307	143	117	136	396	1,343
c. Other Vehicles	16	41	45	102	57	44	60	161	50	51	47	148	46	30	53	129	540
Arson	10	17	16	43	19	14	28	61	20	20	12	52	21	11	13	45	201
Total Property Crimes	4,942	4,276	4,556	13,774	4,643	5,055	4,828	14,526	4,685	4,634	4,437	13,756	4,792	4,395	4,932	14,119	56,175
TOTAL PART 1 CRIMES	5,888	5,095	5,504	16,487	5,612	6,012	5,852	17,476	5,679	5,679	5,490	16,848	5,809	5,393	5,973	17,175	67,986

Motorcycles are now being grouped with "Other Vehicles" starting October 2015.

Does not include "Unfounded" cases by UCR definition.