



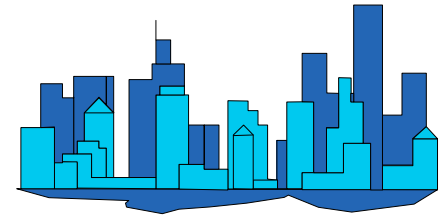
# City of Phoenix

## Monthly Count Of Actual Offenses Known To Police

### Part 1 Crimes

#### By Uniform Crime Reporting (UCR) Classifications

#### 2022 Calendar Year-To-Date



	JAN FEB MAR			1st QTR TOTAL	APR MAY JUN			2nd QTR TOTAL	JUL AUG SEP			3rd QTR TOTAL	OCT NOV DEC			4th QTR TOTAL	2022 YEAR TO DATE TOTAL
	JAN	FEB	MAR		APR	MAY	JUN		JUL	AUG	SEP		OCT	NOV	DEC		
Criminal Homicide	13	22	13	48	24	25	16	65	20	20	20	60	13	17	20	50	223
a. Murder and Non-Negligent Manslaughter	13	22	12	47	24	22	16	62	20	19	20	59	13	16	20	49	217
b. Manslaughter by Negligence	0	0	1	1	0	3	0	3	0	1	0	1	0	1	0	1	6
Total Rape	115	75	77	267	86	75	84	245	93	115	104	312	124	85	72	281	1,105
a. Rape	107	71	74	252	80	67	78	225	89	107	98	294	115	76	67	258	1,029
b. Attempts to commit rape	8	4	3	15	6	8	6	20	4	8	6	18	9	9	5	23	76
Robbery	262	232	249	743	248	295	271	814	301	319	287	907	282	255	206	743	3,207
a. Firearm	92	77	87	256	86	94	76	256	94	84	80	258	99	108	52	259	1,029
b. Knife or Cutting Instrument	31	25	28	84	44	29	28	101	37	31	33	101	37	27	30	94	380
c. Other Dangerous Weapon	35	24	28	87	27	31	30	88	28	36	27	91	30	25	26	81	347
d. Strong-Arm (hands, fists, feet, etc.)	104	106	106	316	91	141	137	369	142	168	147	457	116	95	98	309	1,451
Aggravated Assault	588	661	792	2,041	831	904	820	2,555	820	776	836	2,432	718	580	660	1,958	8,986
<b>Total Violent Crimes</b>	<b>978</b>	<b>990</b>	<b>1,131</b>	<b>3,099</b>	<b>1,189</b>	<b>1,299</b>	<b>1,191</b>	<b>3,679</b>	<b>1,234</b>	<b>1,230</b>	<b>1,247</b>	<b>3,711</b>	<b>1,137</b>	<b>937</b>	<b>958</b>	<b>3,032</b>	<b>13,521</b>
Burglary	549	505	576	1,630	454	530	528	1,512	513	558	527	1,598	557	464	505	1,526	6,266
a. Forcible Entry	350	299	354	1,003	301	351	329	981	338	360	327	1,025	398	315	329	1,042	4,051
b. Unlawful Entry - No Force	171	173	189	533	128	141	157	426	135	166	163	464	123	110	144	377	1,800
c. Attempted Forcible Entry	28	33	33	94	25	38	42	105	40	32	37	109	36	39	32	107	415
Larceny - Theft	3,229	2,937	3,237	9,403	3,044	3,071	2,810	8,925	2,554	2,549	2,387	7,490	2,616	2,495	2,702	7,813	33,631
Motor Vehicle Theft	728	594	759	2,081	621	632	595	1,848	611	709	594	1,914	594	556	640	1,790	7,633
a. Autos	456	351	448	1,255	390	413	381	1,184	400	438	362	1,200	392	367	434	1,193	4,832
b. Trucks and Buses	213	191	241	645	167	164	154	485	168	192	153	513	153	149	158	460	2,103
c. Other Vehicles	59	52	70	181	64	55	60	179	43	79	79	201	49	40	48	137	698
Arson	26	20	23	69	18	28	15	61	22	13	28	63	25	25	14	64	257
<b>Total Property Crimes</b>	<b>4,532</b>	<b>4,056</b>	<b>4,595</b>	<b>13,183</b>	<b>4,137</b>	<b>4,261</b>	<b>3,948</b>	<b>12,346</b>	<b>3,700</b>	<b>3,829</b>	<b>3,536</b>	<b>11,065</b>	<b>3,792</b>	<b>3,540</b>	<b>3,861</b>	<b>11,193</b>	<b>47,787</b>
<b>TOTAL PART 1 CRIMES</b>	<b>5,510</b>	<b>5,046</b>	<b>5,726</b>	<b>16,282</b>	<b>5,326</b>	<b>5,560</b>	<b>5,139</b>	<b>16,025</b>	<b>4,934</b>	<b>5,059</b>	<b>4,783</b>	<b>14,776</b>	<b>4,929</b>	<b>4,477</b>	<b>4,819</b>	<b>14,225</b>	<b>61,308</b>

Motorcycles are now being grouped with "Other Vehicles" starting October 2015.

Does not include "Unfounded" cases by UCR definition.