

## What will be the outcome of the road repurposing?

### *Separates*

- Separates road user movements and travel modes.

### *Simplifies*

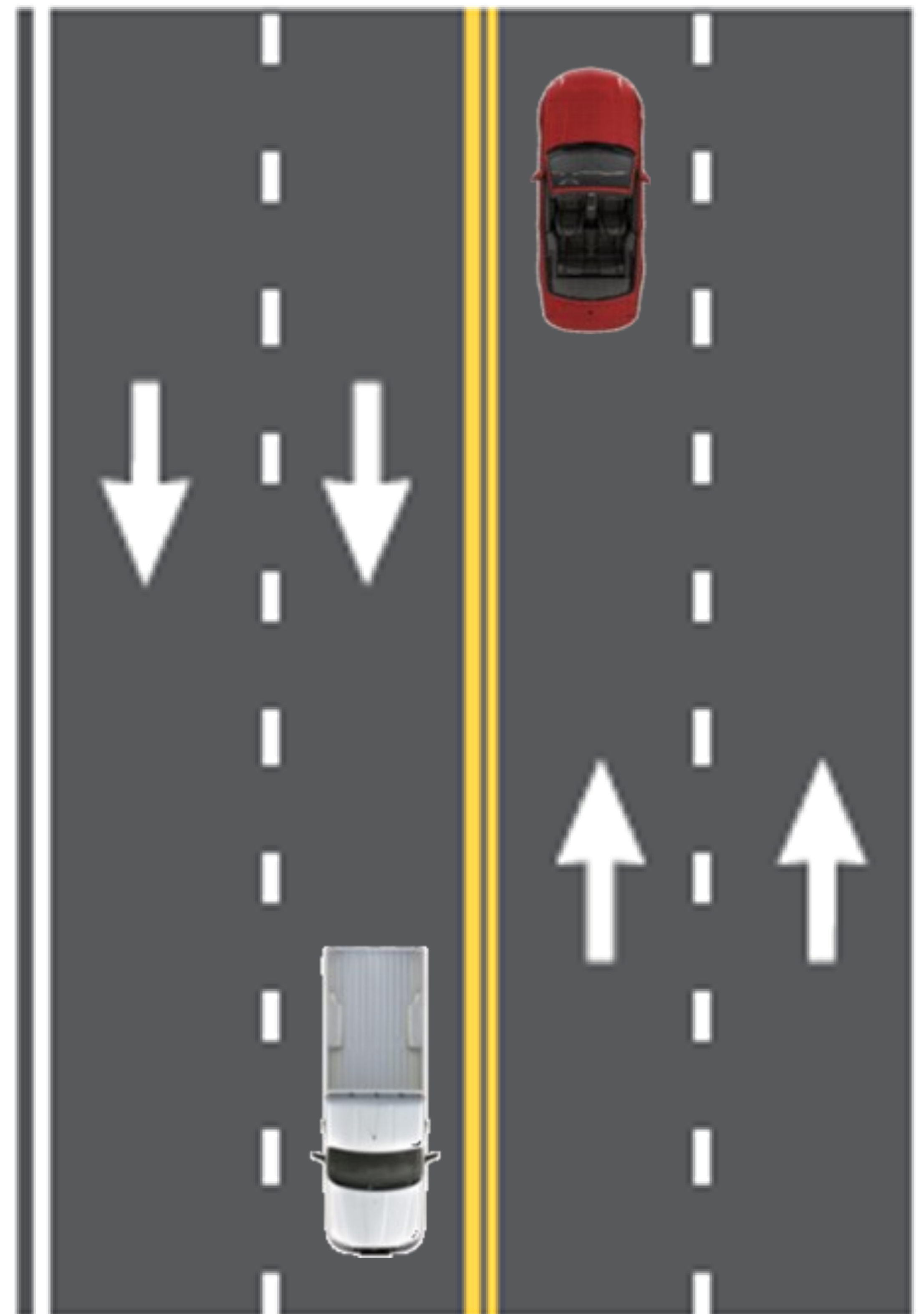
- Reduces the number of movement types in each lane.
- Reduces the number of conflict points.
- Allows for more decision time for left-turning vehicles.

### *Slows*

- Speed dictated by slower traffic.
- Reduces or eliminates high speed passing.

## Road Repurposing: *Existing and Proposed*

### Existing



### Proposed

