

# Proposed Lane Changes Hatcher Road 19<sup>th</sup> to 7<sup>th</sup> Avenues

Open House from 5:30 – 6:00 p.m.

Presentation at 6:00 p.m.

# Hatcher Rd

From 19<sup>th</sup> Ave to 7<sup>th</sup> Ave

Proposed Lane Changes

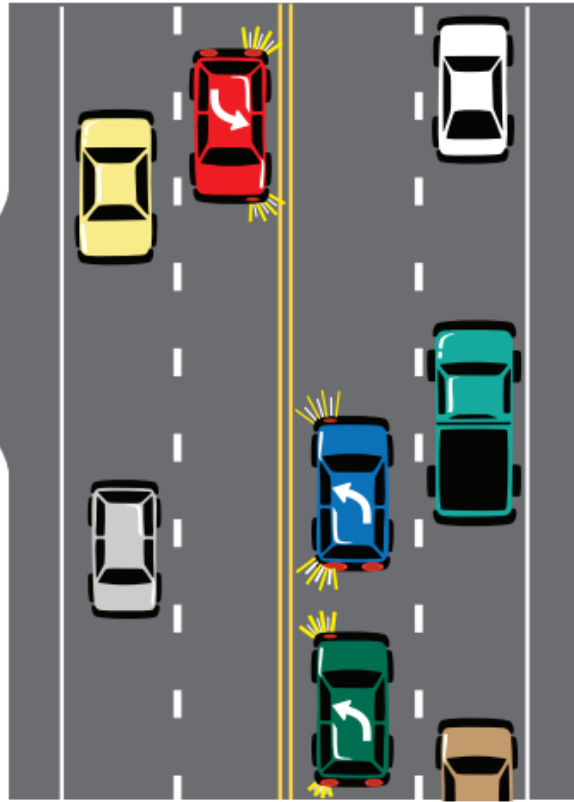
March 2020

# Upcoming Projects on Hatcher Road 19<sup>th</sup> to 7<sup>th</sup> Avenues

- Pavement work scheduled for Spring/Summer 2020
- Crossing upgrade at 13<sup>th</sup> Ave
- Crossing upgrade at 10<sup>th</sup> Dr

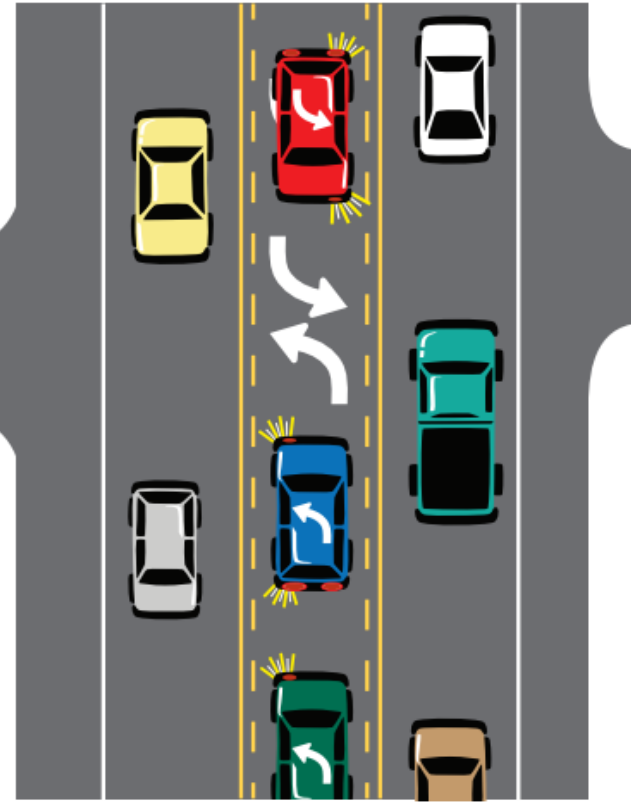
## Bicycling Connections

- Existing bike lanes on Hatcher Rd east of 7<sup>th</sup> Avenue
- Access to the Arizona Canal at 19<sup>th</sup> Avenue
- Potential for future connection to 19<sup>th</sup> Ave and Dunlap Light Rail Transit Station



**Before**

A four-lane road behaving like a three-lane road.



**After**

A Road Diet providing a two-way left-turn lane.

# Hatcher Rd from 19<sup>th</sup> Ave to 7<sup>th</sup> Ave Proposed Lane Reconfiguration and Bike Lanes



Project Area



Existing Bike Lane

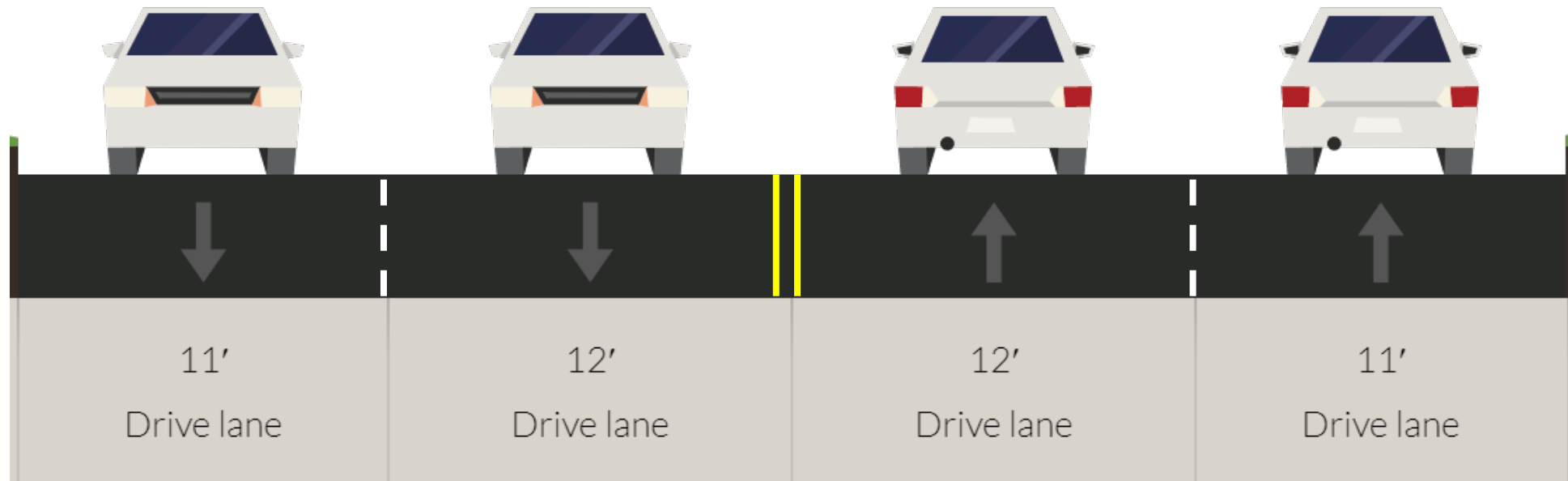


# Existing Lane Configuration



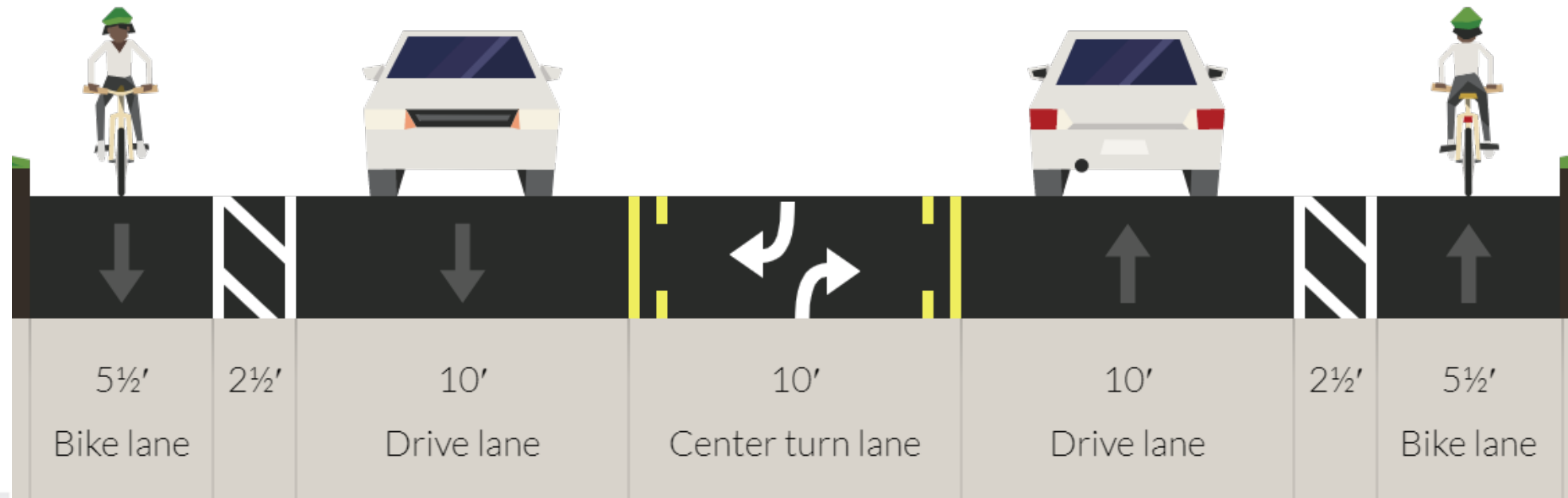
# Hatcher Road Existing

## From 19<sup>th</sup> Ave to 7<sup>th</sup> Ave

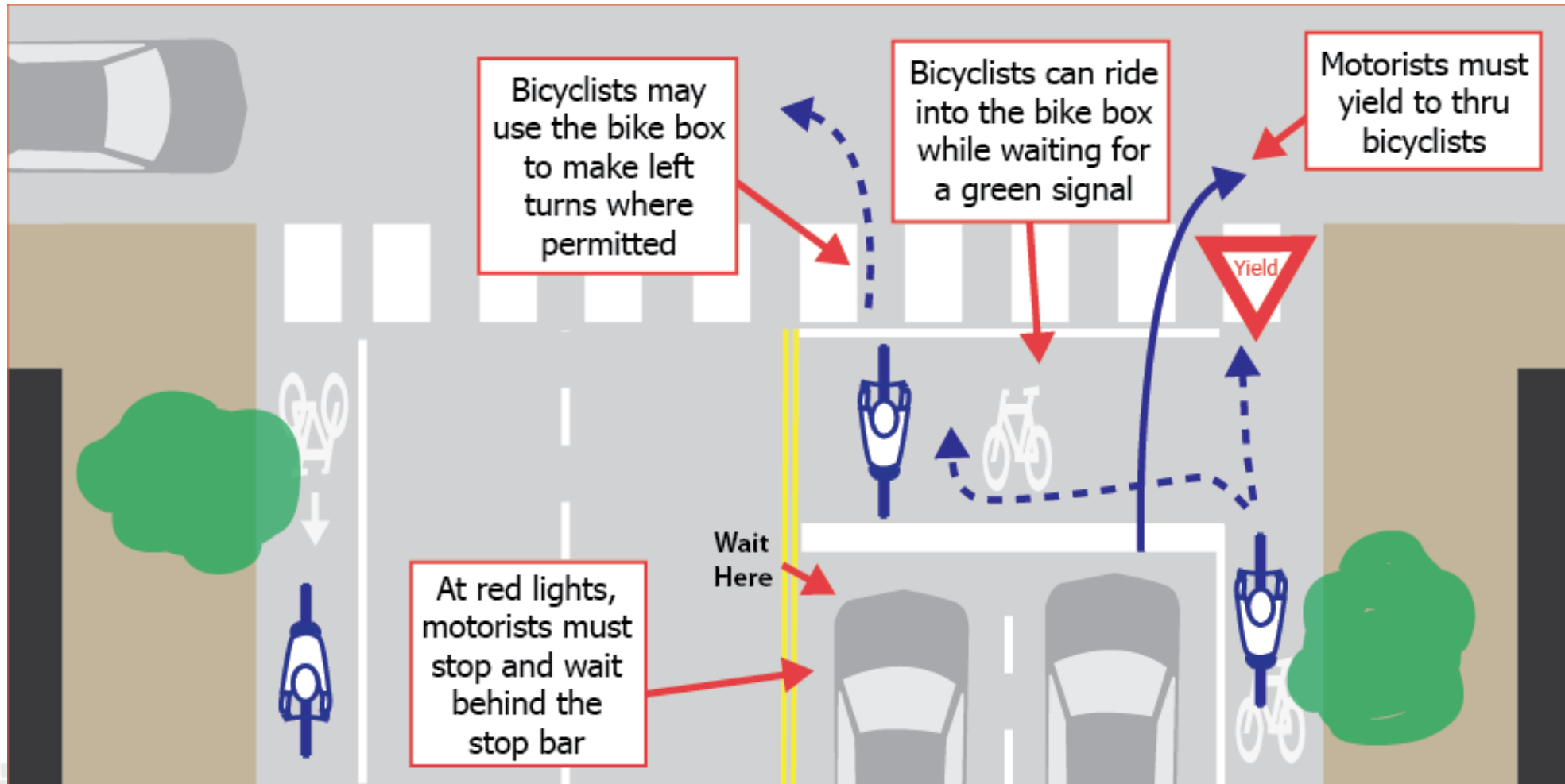




# Hatcher Road Proposed From 19<sup>th</sup> Ave to 7<sup>th</sup> Ave



# How to use a bike box



## Next Steps

- Pavement treatment scheduled for Spring/Summer 2020
- Four to six weeks for decision-making
- Updates will be shared through notifications and the project page:

[www.phoenix.gov/streets/lanechanges/hatcher](http://www.phoenix.gov/streets/lanechanges/hatcher)