

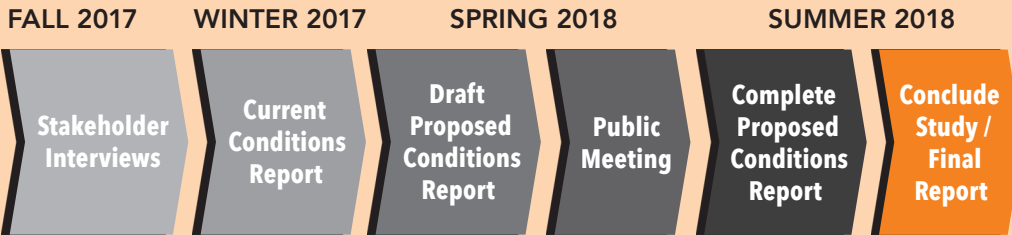


# GOLDEN GATE

## PROJECT DESCRIPTION

The Golden Gate Community Center lies at the middle of the Area and is a well-established community advocacy and education organization. The Isaac School District Offices are located here, as is Isaac Middle School. A pedestrian-bicycle bridge over McDowell Road allows middle school students to safely cross busy McDowell Road from the neighborhoods on the south side. The area has more schools in and adjacent to it than any other area: Mitchell ES, Isaac MS, Esperanza ES, Isaac Pre-School, J.B. Sutton ES, Carl Hayden HS, Alta Butler School, and Udall Escuela de Bellas Artes. Three other elementary schools and one high school are within one-half-mile of the area. Falcon Park is the only park in the area, in the extreme southeast corner. There is one healthcare center in the extreme southeast corner of the area.

### Mobility Project Schedule



### KEY DESTINATIONS

- Golden Gate Community Center
- Isaac School District
- Isaac Middle School
- Mitchell School
- Isaac Preschool
- Carl Hayden High School
- Esperanza Elementary
- J.B. Sutton Elementary
- Alta Butler School
- Udall Escuela de Bella Artes
- Fry's Mercado
- McDowell Corners
- Falcon Park
- Sueno Park

## PHOENIX TRANSPORTATION 2050

Phoenix Transportation 2050 (T2050) dramatically expands investment in Phoenix for bus service, light rail construction and street improvements. The plan will significantly upgrade the city's aging 5,000-mile street network and have a citywide impact on street needs providing new pavement, increasing maintenance on existing streets, and adding bike lanes, sidewalks and ADA accessible/compliant upgrades.

### Mobility Projects Program

While a portion of the new sidewalk and bicycle facilities commitments will be achieved through the pavement maintenance program and the new and expanded major streets program, the Mobility Improvements Program has allocated 15% of the

Street Transportation Department's T2050 funds. This allocation will be utilized to meet the T2050 commitments to install 135 miles of new sidewalks and 1,080 miles of new bike lanes by 2050.

### Mobility Projects Purpose

The objective is to scope and prioritize sidewalk, bike facility, mid-block crossings, and other improvements that will improve walking and biking to key destinations within and adjacent to the study area. Upon completion of

the study, identified and prioritized mobility projects will be considered for inclusion in a 5-Year T2050 Mobility program of projects for design and construction.

Ultimately, the goal of the various mobility studies is to develop and recommend mobility solutions that will improve the safety, accessibility, and multimodal connectivity for all users, regardless of age or ability, to places of employment, schools, markets, and recreational opportunities.



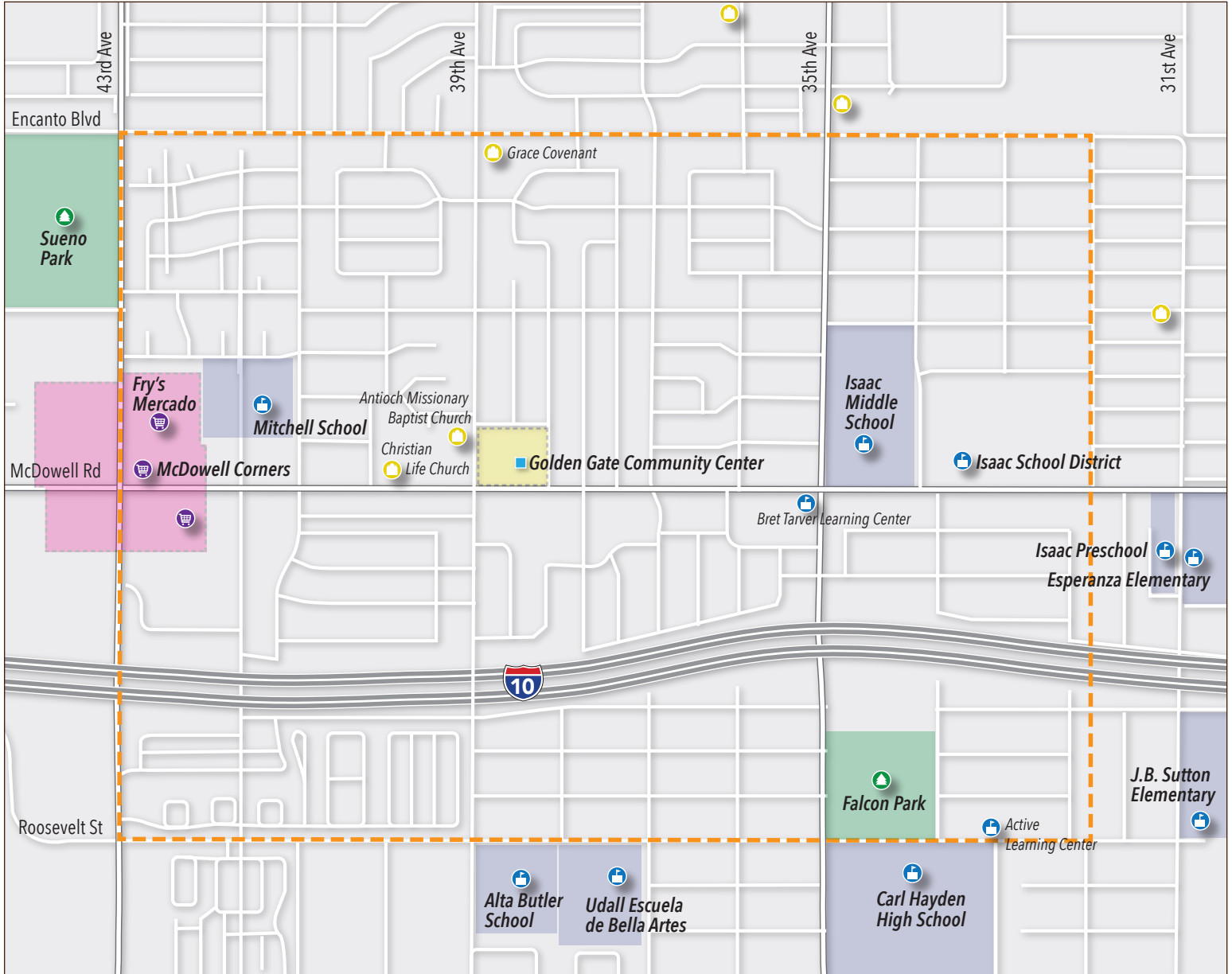
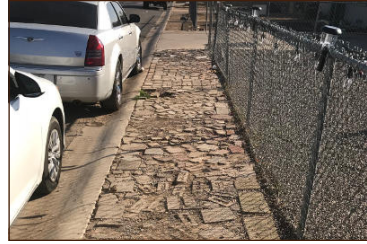
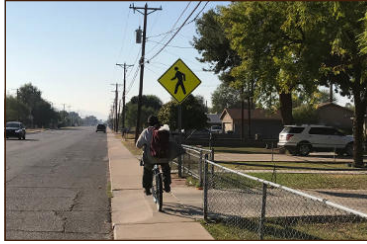
## PROJECT CONTACT INFORMATION

Brian Fellows, Project Manager  
(602) 534-2163  
T2050mobility@phoenix.gov

[phoenix.gov/streets/mobility/southdowntown](http://phoenix.gov/streets/mobility/southdowntown)

# GOLDEN GATE

## STUDY AREA



- - - Mobility Area
- Shopping/Grocery
- Places of Worship
- Park

- School
- Recreation Center

### Key Destinations

- Golden Gate Community Center
- 43rd Avenue and McDowell Road