



Ahwatukee Foothills Village

ANNUAL REPORT

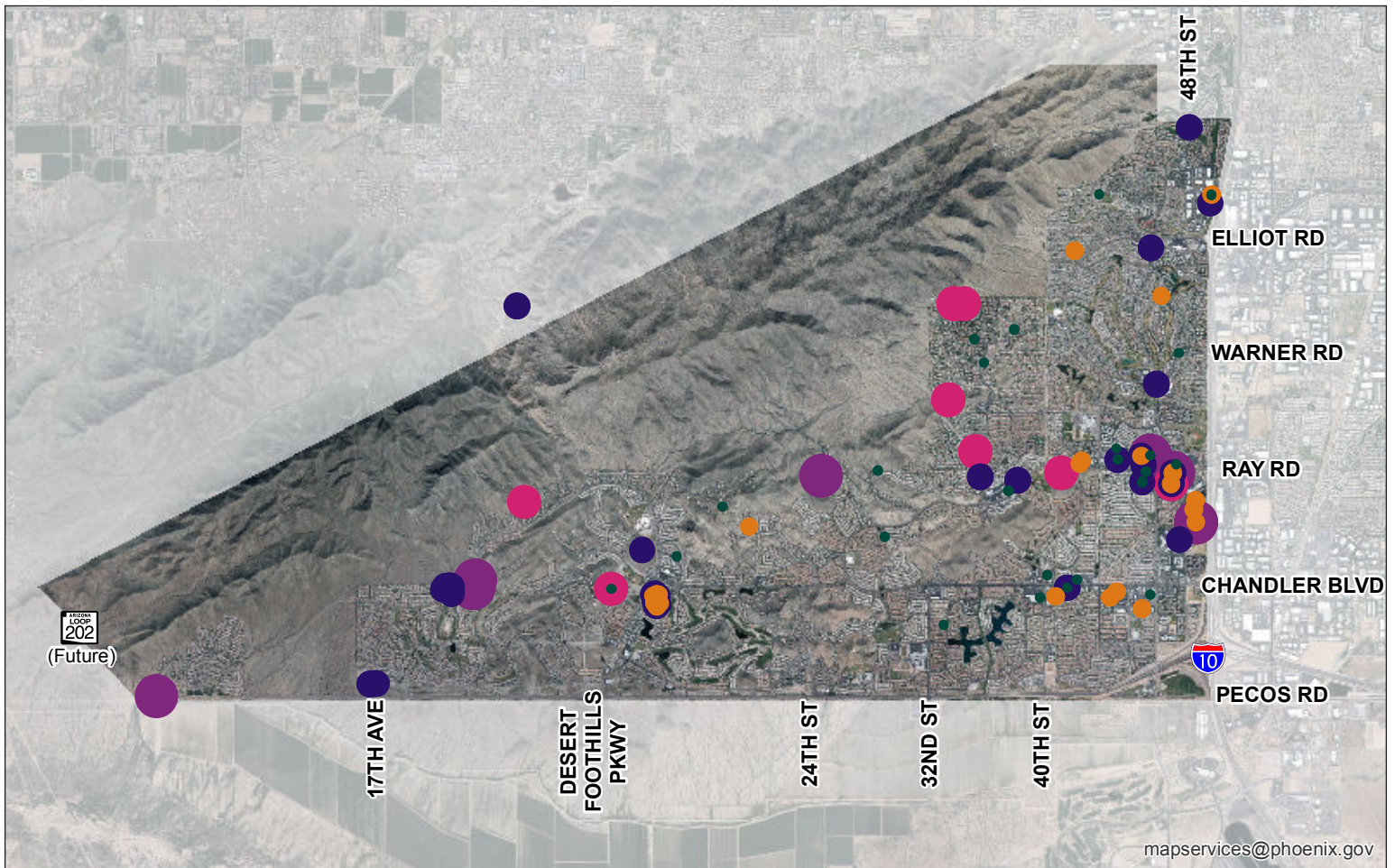
2016



AHWATUKEE FOOTHILLS VILLAGE

MAPPING GROWTH

The Ahwatukee Foothills Village is composed of master-planned communities with desert landscaping, golf courses and lakes. The proximity to South Mountain provides numerous washes and trails for hiking, biking, walking and jogging. These amenities attract residents who value nature's beauty and enjoy an active family life. The village has a planning committee that serves the community by providing review and recommendations on proposals for new zoning districts and changes to the General Plan. In addition, the committee works to identify and resolve local planning problems.



2016 Building Permit Activity (excludes permits less than \$50,000)

- \$50,000 - \$100,000
- \$100,001 - \$200,000
- \$200,001 - \$400,000
- \$400,001 - \$1,000,000
- \$1,000,001 - \$358,000,000



S:\Planning\Projects\Yearly Review\2016\mxd\AhwatukeeFoothills_YearlyReview2016_Permits.mxd

AHWATUKEE FOOTHILLS VILLAGE
BY THE NUMBERS

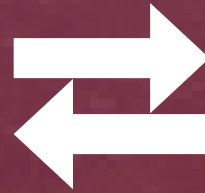
REZONING ACTIVITY

one rezoning case



ZONING ADJUSTMENTS

11 variance/use permits



PLANNING HEARING OFFICER

one planning hearing officer case



TEXT AMENDMENTS

five text amendment cases



ESTIMATED PERMIT VALUE

56.2 million dollars



BUILDING PERMITS

387 building permits



Rosewood Canyon Estates



Construction has recently begun on the Rosewood Canyon Estates project. Located at the intersection of Chandler Road and 11th Avenue, Rosewood Canyon Estates is nestled in the foothills of the South Mountain Park Preserve. The site consists of 40 individual single-family lots with scenic mountain views and access to both the Preserve and the open space provided throughout the site.



Traditional Manor Elevation

Rosewood Canyon offers a variety of home elevations in styles such as Spanish Colonial, Mission, and Craftsman. Floor plans range from approximately 2,200 to 3,500 square feet and include one and two-story homes, 3-5 bedroom options, and oversized garages with 2 and 3-car options. Homes feature a variety of options such as invisible glass walls, casitas, exercise rooms, libraries, wine closets, and walk-out decks.



Craftsman Elevation

Rosewood Homes are also notable for their dedication to energy efficiency. Homes are certified to exceed current building code requirements for efficiency by a minimum of 40%.

GENERATIONS AT AHWATUKEE

Located at the southeast corner of 50th Street and Chandler Boulevard, Generations at Ahwatukee is a planned assisted living and memory care facility scheduled to open in 2017. The facility will offer a variety of customized care options as well as several apartment styles for residents to choose from.



2016 IN REVIEW

**PERFECT
ATTENDANCE**



Chair
Chad Blostone



Michael Schiller



15+

HOURS OF
ACTIVITIES

6

VILLAGE PLANNING
COMMITTEE
MEETINGS

165+

RESIDENTS WHO
ATTENDED THE
MEETINGS

7

RECOMMENDATIONS

12

INFORMATIONAL
PRESENTATIONS

AHWATUKEE FOOTHILLS VILLAGE MEMBERS

- Chad Blostone - Chair
- Spencer Elliot - Vice-Chair
- Melanie Beauchamp
- Alexander Benezra
- Scott Crouch
- Andrew Gasparro
- Christopher Gentis
- Michael Hinz
- Ben Holt
- Mike Maloney

- Max Masel
- Pete Meier
- Blanche Prokes
- TJ-Nile Rachford
- Vanessa Ryan
- Michael Schiller
- Darin Sender
- Brian Symes
- Jerry Youhanaie



Ahwatukee Foothills Village

For more information, or to view the
electronic version of this document
please visit

<https://www.phoenix.gov/villages/Ahwatukee-Foothills>

The Ahwatukee Foothills Village Planning
Committee generally meets the 4th Monday
of each month at 6:00 p.m. at the Pecos Park
Community Center, 17010 South 48th Street.
Please consult the public meeting notices page for
an agenda to confirm that the meeting will occur.

[https://www.phoenix.gov/cityclerk/
publicmeetings/notices](https://www.phoenix.gov/cityclerk/publicmeetings/notices)

This publication can be made available in
alternate format upon request. Contact Tamra
Ingersoll at the Planning & Development
Department at 602-534-6648. TTY: Use 7-1-1



PDD