



MAKE CONSERVATION YOUR BUSINESS.



INSTITUTIONAL AND COMMERCIAL FACILITIES

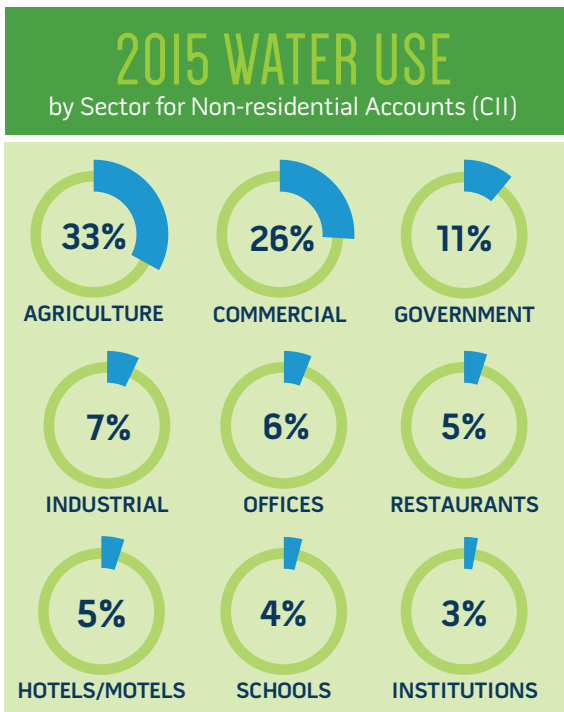
Implementing water-efficiency measures within commercial and institutional facilities reduces operating costs and creates more sustainable practices. Schools, hotels, and hospitals can significantly reduce water use through water-efficient fixtures, technologies, and techniques.

START SAVING. START DOING.

Water efficiency at the workplace starts with understanding a facility's water usage processes. We can provide a water efficiency check-up, which will help identify potential water-saving opportunities and calculate the payback periods to help prioritize options to reach water-saving goals.

WATER SMART TIPS FOR COMMERCIAL & INSTITUTIONAL FACILITIES

- Install WaterSense-labeled faucets, showerheads, toilets, and urinals where appropriate.
- Upgrade or retrofit with water- and energy-efficient laundry equipment.
- Design landscapes that reduce water needed for irrigation.
- Adjust irrigation controller monthly and check for leaks.
- Implement energy efficiency measures to reduce the need for cooling and heating systems, which will decrease the amount of water required to run them.
- Install WaterSense-labeled pre-rinse spray valves to save more than 7,000 gallons of water per year.
- Install ENERGY STAR® certified dishwashers, ice machines, steam cookers, or combination ovens where appropriate to reduce water and energy use by at least 10 percent.
- Consider replacing equipment that discharges water continuously, such as dipper wells or wok stoves, with more efficient models.
- Coordinate with your HVAC professional to monitor cooling tower and boiler water chemistry to maximize the number of times water can be recycled through the system.



City of Phoenix
Water Services
Department

conservation@phoenix.gov
(602) 261-8367

PHOENIX
GREEN



BUSINESS
LEADER

WORK PLACE.
GREEN SPACE.



FOR MORE INFORMATION VISIT PHOENIX.GOV/WATER

