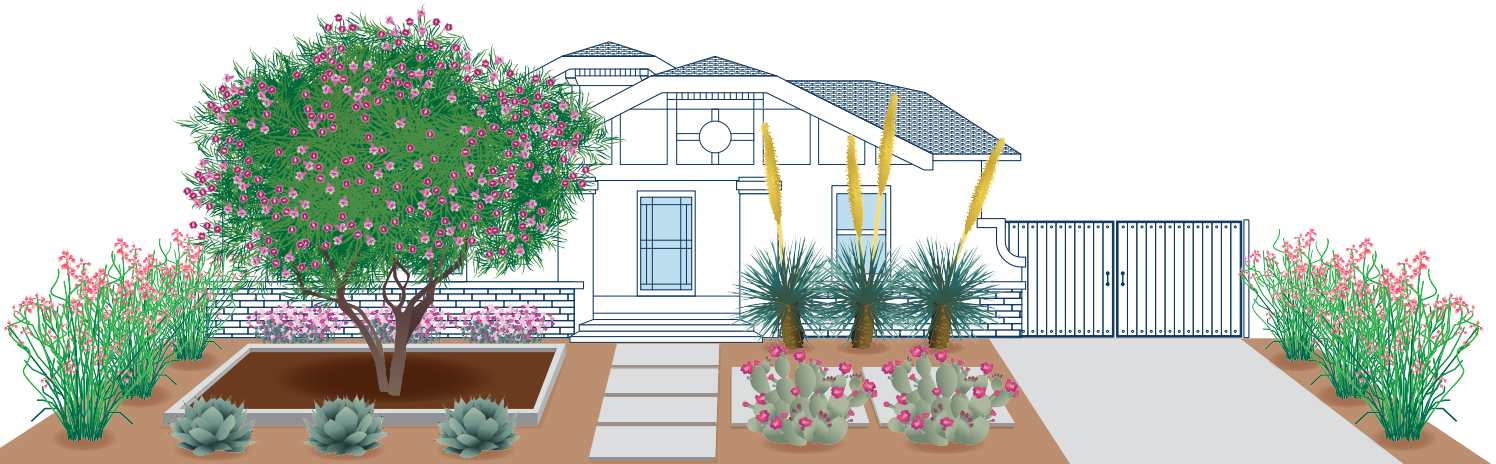


SMALL DIMENSIONS: CONTEMPORARY AND BALANCED STYLE

DESERT LANDSCAPES IN YOUR FRONT YARD



DESERT PLANTS: WATER-WISE, LOW MAINTENANCE, AND BEAUTIFUL!

SPEND LESS TIME MAINTAINING YOUR LANDSCAPE

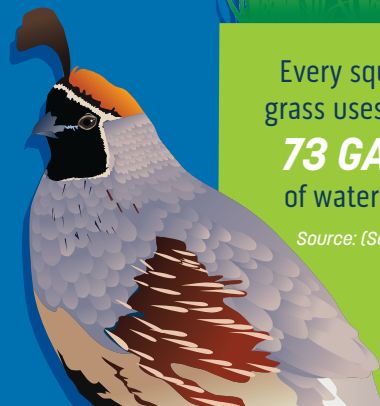
Spend less time mowing a lawn and more time doing the things you love. To learn how to keep your desert yard healthy, beautiful, and hassle-free, follow these instructions and visit our website.

THERE'S BEAUTY IN BIODIVERSITY

Biodiversity emphasizes the importance of diverse plants: different types, sizes, and shapes. These plans include a wide variety of plants, and they are all adapted for the desert! You will see that your yard has a new personality with every season. Pollinators love that!

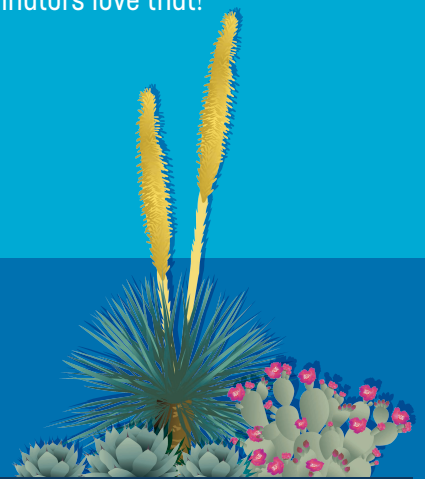
DID YOU KNOW?

Choosing desert plants can reduce your outdoor water use by **85%**!



Every square foot of grass uses as much as **73 GALLONS** of water each year!

Source: (Sovocool 2005)



By following this plan you can save as much as **22,000 GALLONS** of water each year!

SITE PLAN

Our site plan will help you to see the potential in your front yard!

PLANT PALETTE

SYMBOL	QUANTITY	COMMON NAME	BOTANICAL NAME	SIZE (FT.)	BENEFITS
	1	Desert Willow	<i>Chilopsis linearis</i>	Up to 20' wide	 
	3	Parry's Agave	<i>Agave parryi</i>	Up to 3' wide	
	3	Desert Spoon	<i>Dasyliirion wheeleri</i>	Up to 4' wide	 
	6	Slipper Plant	<i>Euphorbia lomelii</i>	Up to 3' wide	 
	2	Beavertail Prickly Pear	<i>Opuntia basilaris</i>	Up to 3' wide	 

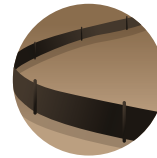
MATERIALS



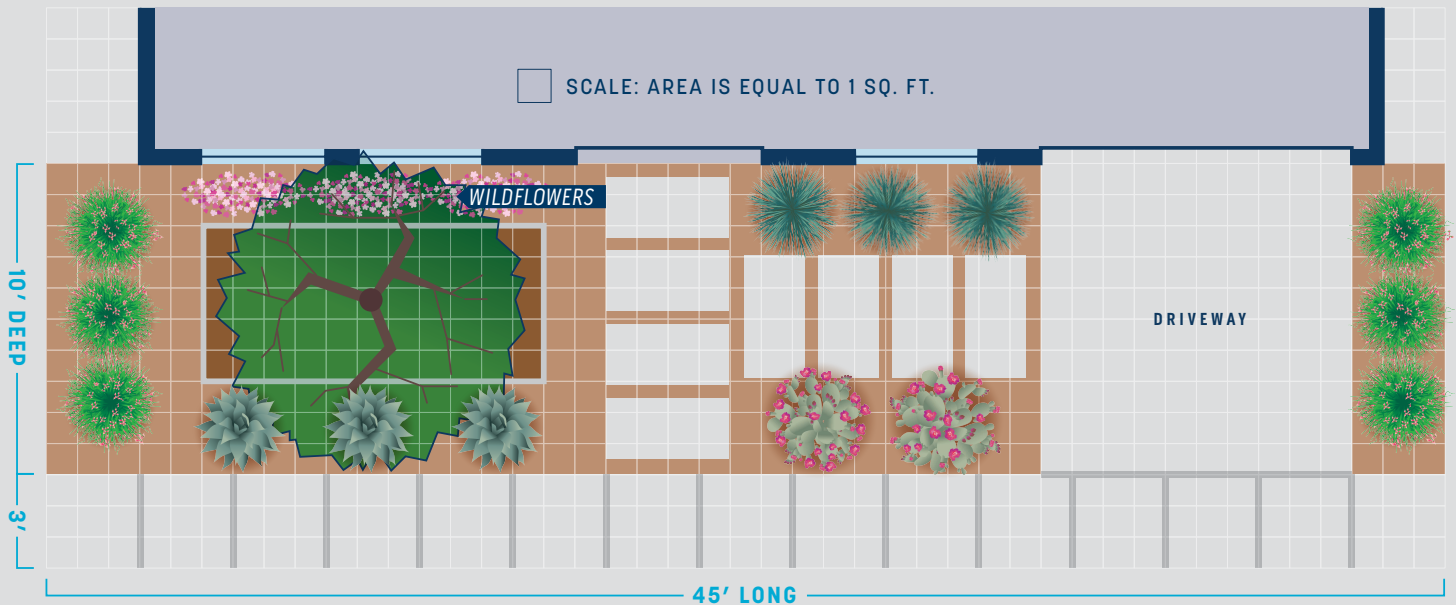
Concrete pavers (4'x2')



Decomposed Granite



40" of 4" thick Landscape Edging



PLANT FACTS & TIPS



The plants in this plan may attract bugs and birds! To bring even more pollinators, try planting wildflowers! Check this QR code to learn how.

This plan includes the use of mulch and passive rainwater harvesting techniques. To learn more about how you can make the most of rain, please visit phoenix.gov/savewater.

TIPS FOR SUCCESS

DID YOU KNOW?

A plant's roots are typically just as wide as the plant itself. And, root systems collect water at the very tips of the roots—not the center! If you have a tree, you need to water around the canopy. Place your emitters around your tree in a circular fashion, not at the trunk of the tree!

DID YOU KNOW?

Once your desert plants are mature and established, you do NOT need to irrigate them!

ADAPT THESE PLANS TO YOUR HOME

Every home in Phoenix is unique, including lot sizes. Here are elements to consider before you get to work on your new Xeriscape:

Establish a baseline: What's going on in your yard? Do you have grass? Do you have rocks? Weeds? Get familiar with your yard and then visit our website to learn about preparing your property for a landscape conversion, including **TURF REMOVAL TIPS**.

Size: Which plan option is closest to the size of your yard? If you don't like the plant choices, choose other water-wise plants and prioritize Sonoran Desert natives.

Season: Please only do your yardwork when it is safe. We don't recommend digging when it is 100 degrees outside or during a lightning storm.

Water: There are two types of water you should think about: 1. Rainwater and 2. Irrigation. Make sure that you are thinking about the unique land grading and water flow patterns of your property. Ensure that your irrigation system is functional and leak-free! And water-wise does not mean zero water!

PLANT SUBSTITUTES

Please check out the two other plans that we offer, the table below, or any resources listed on our website for more water-wise plants!

PLANT TYPE:	COMMON NAME	SCIENTIFIC NAME	MAX WIDTH
TREES	Ironwood*	<i>Olneya tesota</i>	25'
	Blue Palo Verde*	<i>Cercidium floridum</i>	30'
	Arizona Rosewood*	<i>Vauquelinia californica</i>	8'
	Feather Bush*	<i>Lysiloma watsonii</i>	15'
	Cascalote	<i>Caesalpinia cacalaco</i>	15'
SHRUBS	Hopbush*	<i>Dodonea viscosa</i>	8'
	Desert Lavender*	<i>Hyptis emoryi</i>	4'
	San Marcos Hibiscus*	<i>Gossypium harknessii</i>	4'
	Langman's Sage	<i>Leucophyllum langmaniae</i>	5'
	Sugar Bush*	<i>Rhus ovata</i>	6'
	Pink Fairyduster*	<i>Calliandra eriophylla</i>	4'
	Little-Leaf Cordia*	<i>Cordia parvifolia</i>	6'
	Desert Hackberry*	<i>Celtis pallida</i>	10'
Bush Dalea* or Weeping Dalea*	<i>Dalea pulchra/Dalea versicolor (sessilis)</i>	5'	
ACCENTS	Fishhook Barrel Cactus*	<i>Ferocactus wislizeni</i>	3'
	Engelmann's Hedgehog Cactus*	<i>Echinocereus engelmannii</i>	2'
	Purple Prickly Pear*	<i>Opuntia santa-rita</i>	5'
	Ocotillo*	<i>Fouquieria splendens</i>	10'
	Saguaro*	<i>Carnegieia gigantea</i>	10'

* Sonoran Desert native!

Utilities: Know your yard before doing any updates! If you damage buried utilities, it can be a very costly and inconvenient repair.

Where will you get your plants: Every plant in this plan was observed for sale at a local nursery or plant sale in the Phoenix area. Finding your plants may not happen in a single weekend—take your time, get the plants that you want, and start your work once you feel pleased with your options. You can always tend potted plants before transferring them into the ground.

Suggested Supplies: Make sure your supplies check these boxes:

- Irrigation materials (tubing, controllers, emitters, bubblers, & more)
- Hardscape (pavers, stones, or similar material)
- Substrate (gravel, decomposed granite, mulch, etc.)
- Tools (shovels, spades, rakes, trowels, gloves, & more)

SHARE YOUR COMMITMENT TO #SAVEWATERPHX

POST PHOTOS OF YOUR XERISCAPED YARD WITH #PHXDESERTYARD

CREDITS

City of Phoenix Water Services Department
Maxwell Wilson, Deputy Director Water Planning
Emilie J. Brown, Water Resource Specialist
Peggy Taylor, Graphic Designer

ASU Project Cities
Julia Colbert, Program Manager
Alison Almand, Program Coordinator

ASU Landscape Architecture Program
Sofia Lomeli, BSLA, Student
Chingwen Cheng, Program Head & Assoc. Prof.

